

District I  
1625 N. French Dr., Hobbs, NM 88240  
Phone: (575) 393-6161 Fax: (575) 393-0720  
District II  
811 S. First St., Artesia, NM 88210  
Phone: (575) 748-1283 Fax: (575) 748-9720  
District III  
1000 Rio Brazos Road, Aztec, NM 87410  
Phone: (505) 334-6178 Fax: (505) 334-6170  
District IV  
1220 S. St. Francis Dr., Santa Fe, NM 87505  
Phone: (505) 476-3460 Fax: (505) 476-3462

RECEIVED

State of New Mexico  
Energy, Minerals & Natural Resources Department

NOV 06 2018

OIL CONSERVATION DIVISION

1220 South St. Francis Dr.  
Santa Fe, NM 87505

DISTRICT II-ARTESIA O.C.D.

Form C-102

Revised August 1, 2011

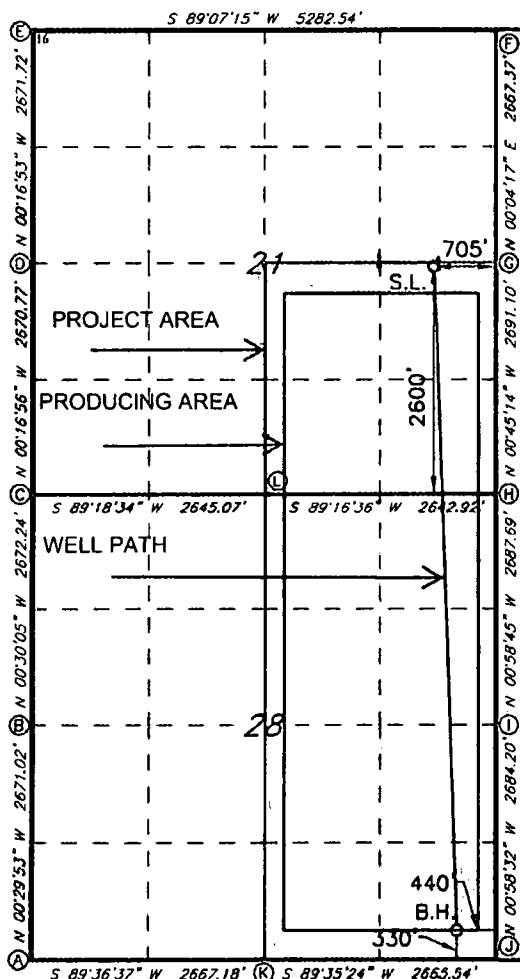
Submit one copy to appropriate  
District Office

☐ AMENDED REPORT

WELL LOCATION AND ACREAGE DEDICATION PLAT

<sup>1</sup> API Number <b>30-015-46403</b>		<sup>2</sup> Pool Code <b>98220</b>		<sup>3</sup> Pool Name <b>PURPLE SAGE - WOLFCAMP GAS POOL</b>					
<sup>4</sup> Property Code <b>322844</b>		<sup>5</sup> Property Name <b>KANSAS 21/28 WOIP FEDERAL COM</b>						<sup>6</sup> Well Number <b>2H</b>	
<sup>7</sup> GRID NO <b>14744</b>		<sup>8</sup> Operator Name <b>MEWBOURNE OIL COMPANY</b>						<sup>9</sup> Elevation <b>3024'</b>	
<sup>10</sup> Surface Location									
UL or lot no. <b>I</b>	Section <b>21</b>	Township <b>24S</b>	Range <b>28E</b>	Lot Idn	Feet from the <b>2600</b>	North/South line <b>SOUTH</b>	Feet From the <b>705</b>	East/West line <b>EAST</b>	County <b>EDDY</b>
<sup>11</sup> Bottom Hole Location If Different From Surface									
UL or lot no. <b>P</b>	Section <b>28</b>	Township <b>24S</b>	Range <b>28E</b>	Lot Idn	Feet from the <b>330</b>	North/South line <b>SOUTH</b>	Feet from the <b>440</b>	East/West line <b>EAST</b>	County <b>EDDY</b>
<sup>12</sup> Dedicated Acres <b>480</b>		<sup>13</sup> Joint or Infill		<sup>14</sup> Consolidation Code		<sup>15</sup> Order No.			

No allowable will be assigned to this completion until all interest have been consolidated or a non-standard unit has been approved by the division.



**GEODETIC DATA**  
NAD 83 GRID - NM EAST  
**SURFACE LOCATION**  
N 437728.2 - E 617696.0  
LAT: 32.2031508° N  
LONG: 104.0864608° W  
**BOTTOM HOLE**  
N 430094.7 - E 618081.1  
LAT: 32.1821648° N  
LONG: 104.0852725° W  
**CORNER DATA**  
NAD 83 GRID - NM EAST  
A: FOUND BRASS CAP "1942"  
N 429730.8 - E 613195.2  
B: FOUND BRASS CAP "1942"  
N 432401.1 - E 613172.0  
C: FOUND BRASS CAP "1942"  
N 435072.6 - E 613148.6  
D: FOUND BRASS CAP "1942"  
N 437742.8 - E 613135.4  
E: CALCULATED CORNER  
N 440413.8 - E 613122.2  
F: CALCULATED CORNER  
N 440494.9 - E 618402.9  
G: FOUND BRASS CAP "1942"  
N 437828.1 - E 618399.6  
H: FOUND BRASS CAP "1942"  
N 435137.9 - E 618435.0  
I: FOUND BRASS CAP "1942"  
N 432451.2 - E 618480.9  
J: FOUND BRASS CAP "1942"  
N 429768.0 - E 618526.6  
K: FOUND BRASS CAP "1942"  
N 429748.9 - E 615861.7  
L: FOUND BRASS CAP "1942"  
N 435104.5 - E 615792.9

**17 OPERATOR CERTIFICATION**

I hereby certify that the information contained herein is true and complete to the best of my knowledge and belief, and that this organization either owns a working interest or unleased mineral interest in the land including the proposed bottom hole location or has a right to drill this well at this location pursuant to a contract with an owner of such a mineral or working interest, or to a voluntary pooling agreement or a compulsory pooling order previously entered by the division.

4-23-18

Signature  
**BRADLEY BISHOP**

Printed Name  
**BBISHOP@MEWBOURNE.COM**

E-mail Address

**18 SURVEYOR CERTIFICATION**

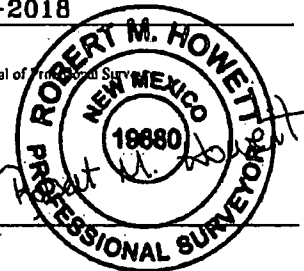
I hereby certify that the well location shown on this plat was plotted from field notes of actual surveys made by me or under my supervision, and that the same is true and correct to the best of my belief.

**02-23-2018**

Date of Survey

Signature and Seal of Professional Surveyor

**19680**  
Certificate Number



Job No.: LS1802254

RUP 11-7-18

United States Department of the Interior  
Bureau of Land Management  
Carlsbad Field Office  
620 E Greene Street  
Carlsbad, New Mexico 88201-1287

Statement Accepting Responsibility for Operations

Operator Name: Mewbourne Oil Company  
Street or Box: P.O. Box 5270  
City, State: Hobbs, New Mexico  
Zip Code: 88241

The undersigned accepts all applicable terms, conditions, stipulations, and restrictions concerning operations conducted of the leased land or portion thereof, as described below.

Lease Number: NMNM 081922, NMNM 036975

Legal Description of Land: Section 21, T24S, R28E, Eddy County, New Mexico.  
Location @ 2600 FSL & 705 FEL

Formation (if applicable): Wolfcamp

Bond Coverage: \$150,000

BLM Bond File: NM1693 nationwide, NMB000919



Authorized Signature: \_\_\_\_\_

Name: Bradley Bishop  
Title: Regulatory Manager

Date: 4-23-18