

RECEIVED

District I  
1625 N. French Dr., Hobbs, NM 88240  
Phone: (575) 393-6161 Fax: (575) 393-0720

District II  
811 S. First St., Artesia, NM 88210  
Phone: (575) 748-1283 Fax: (575) 748-9720

District III  
1000 Rio Brazos Road, Aztec, NM 87410  
Phone: (505) 334-6178 Fax: (505) 334-6170

District IV  
1220 S. St. Francis Dr., Santa Fe, NM 87505  
Phone: (505) 476-3460 Fax: (505) 476-3462

State of New Mexico  
Energy, Minerals & Natural Resources Department  
OIL CONSERVATION DIVISION  
1220 South St. Francis Dr.  
Santa Fe, NM 87505

Form C-102  
Revised August 1, 2011  
Submit one copy to appropriate  
District Office

☐ AMENDED REPORT

## WELL LOCATION AND ACREAGE DEDICATION PLAT

<sup>1</sup> API Number 30-015-45399	<sup>2</sup> Pool Code 97905	<sup>3</sup> Pool Name WC G-07 S22302161; Bone Spring
<sup>4</sup> Property Code 4021-322840	<sup>5</sup> Property Name JAMES RANCH UNIT DI I BS2A-7E	
<sup>7</sup> OGRID No. 240737	<sup>8</sup> Operator Name BOPCO, L.P.	<sup>9</sup> Elevation 3168'

<sup>10</sup> Surface Location

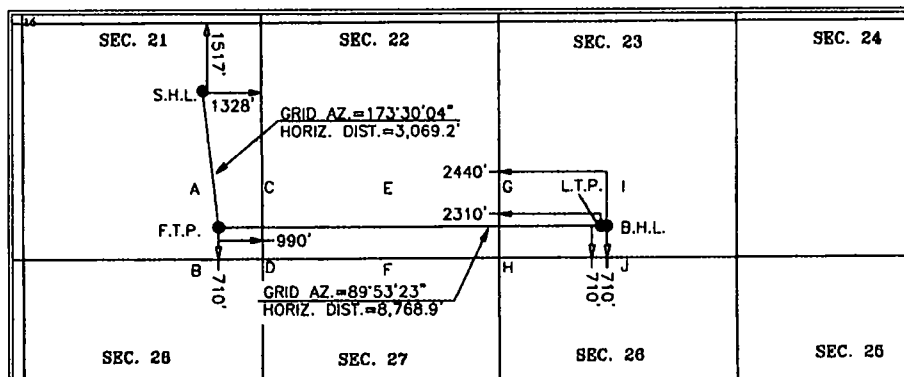
UL or lot no.	Section	Township	Range	Lot Idn	Feet from the	North/South line	Feet from the	East/West line	County
H	21	22 S	30 E		1,517	NORTH	1,328	EAST	EDDY

<sup>11</sup> Bottom Hole Location If Different From Surface

UL or lot no.	Section	Township	Range	Lot Idn	Feet from the	North/South line	Feet from the	East/West line	County
N	23	22 S	30 E		710	SOUTH	2,440	WEST	EDDY

<sup>12</sup> Dedicated Acres 380	<sup>13</sup> Joint or Infill	<sup>14</sup> Consolidation Code	<sup>15</sup> Order No.
--------------------------------------	-------------------------------	----------------------------------	-------------------------

No allowable will be assigned to this completion until all interests have been consolidated or a non-standard unit has been approved by the division.



**SURFACE LOCATION**  
NAD 27 NME  
Y= 502,491.0  
X= 639,515.8  
LAT.= 32.380653°N  
LONG.= 103.881400°W

**LAST TAKE POINT**  
NAD 27 NME  
Y= 499,458.2  
X= 648,502.0  
LAT.= 32.372208°N  
LONG.= 103.852336°W

**SURFACE LOCATION**  
NAD 83 NME  
Y= 502,551.3  
X= 680,697.6  
LAT.= 32.380774°N  
LONG.= 103.881894°W

**LAST TAKE POINT**  
NAD 83 NME  
Y= 499,518.4  
X= 689,683.9  
LAT.= 32.372330°N  
LONG.= 103.852829°W

**FIRST TAKE POINT**  
NAD 27 NME  
Y= 499,441.6  
X= 639,863.1  
LAT.= 32.372266°N  
LONG.= 103.880316°W

**BOTTOM HOLE LOCATION**  
NAD 27 NME  
Y= 499,458.4  
X= 648,632.0  
LAT.= 32.372207°N  
LONG.= 103.851915°W

**FIRST TAKE POINT**  
NAD 83 NME  
Y= 499,501.8  
X= 681,045.0  
LAT.= 32.372388°N  
LONG.= 103.880810°W

**BOTTOM HOLE LOCATION**  
NAD 83 NME  
Y= 499,518.6  
X= 689,813.9  
LAT.= 32.372329°N  
LONG.= 103.852408°W

CORNER COORDINATES TABLE  
NAD 27 NME

A - Y= 500,049.6 N, X= 639,510.3 E  
B - Y= 498,731.0 N, X= 639,514.3 E  
C - Y= 500,051.5 N, X= 640,851.0 E  
D - Y= 498,733.2 N, X= 640,855.6 E  
E - Y= 500,056.9 N, X= 643,520.8 E  
F - Y= 498,737.6 N, X= 643,522.5 E  
G - Y= 500,063.5 N, X= 646,192.2 E  
H - Y= 498,744.4 N, X= 646,191.8 E  
I - Y= 500,068.6 N, X= 648,870.7 E  
J - Y= 498,748.8 N, X= 648,869.4 E

CORNER COORDINATES TABLE  
NAD 83 NME

A - Y= 500,109.8 N, X= 680,692.1 E  
B - Y= 498,791.2 N, X= 680,696.2 E  
C - Y= 500,111.7 N, X= 682,032.9 E  
D - Y= 498,793.4 N, X= 682,037.5 E  
E - Y= 500,117.1 N, X= 684,702.7 E  
F - Y= 498,797.8 N, X= 684,704.4 E  
G - Y= 500,123.7 N, X= 687,374.1 E  
H - Y= 498,804.6 N, X= 687,373.7 E  
I - Y= 500,128.8 N, X= 690,052.6 E  
J - Y= 498,809.0 N, X= 690,051.3 E

<sup>17</sup> OPERATOR CERTIFICATION

I hereby certify that the information contained herein is true and complete to the best of my knowledge and belief, and that this organization either owns a working interest or unleased mineral interest in the land including the proposed bottom hole location or has a right to drill this well at this location pursuant to a contract with an owner of such a mineral or working interest, or to a voluntary pooling agreement or a compulsory pooling order heretofore entered by the division.

Signature: Stephanie Rabardue Date: 12/1/17

Printed Name: Stephanie Rabardue

E-mail Address: Stephanie - rabardue @ xtoenergy.com

<sup>18</sup> SURVEYOR CERTIFICATION

I hereby certify that the well location shown on this plat was plotted from field notes of actual surveys made by me or under my supervision, and that the same is true and correct to the best of my belief.

11-28-2017

Date of Survey

Signature and Seal of  
Professional Surveyor:

[Signature]

MARK DILLON HARP 23786  
Certificate Number



AI

2017050646

RwP 11-7-18

APD ID: 10400024789

Submission Date: 12/26/2017

Operator Name: BOPCO LP

Well Name: JAMES RANCH UNIT DI 1 BS2A-7E

Well Number: 211H

Well Type: OIL WELL

Well Work Type: Drill

Highlighted data  
reflects the most  
recent changes

[Show Final Text](#)

## Section 1 - Geologic Formations

Formation ID	Formation Name	Elevation	True Vertical Depth	Measured Depth	Lithologies	Mineral Resources	Producing Formation
1	---	3168	0	0	ALLUVIUM,OTHER : Quaternary	NONE	No
2	RUSTLER	2981	187	187	SANDSTONE	USEABLE WATER	No
3	TOP SALT	2612	556	556	SALT	NONE	No
4	BASE OF SALT	-196	3364	3364	SALT	NONE	No
5	BELL CANYON	-424	3592	3592	SANDSTONE	NATURAL GAS,OIL,OTHER : Produced Water	No
6	BRUSHY CANYON	-2853	6021	6021	SANDSTONE	NATURAL GAS,OIL,OTHER : Produced Water	No
7	BONE SPRING 1ST	-4204	7372	7372	SANDSTONE	NATURAL GAS,POTASH,OTHER : Produced Water	No
8	BONE SPRING 2ND	-5211	8379	8379	SANDSTONE	NATURAL GAS,OIL,OTHER : Produced Water	Yes

## Section 2 - Blowout Prevention

Pressure Rating (PSI): 3M

Rating Depth: 9227

**Equipment:** The blow out preventer equipment (BOP) for the permanent wellhead consists of a 13-5/8" minimum 3M Hydril and a 13-5/8" minimum 3M Double Ram BOP. MASP should not exceed 2481 psi.

**Requesting Variance?** YES

**Variance request:** A variance is requested to allow use of a flex hose as the choke line from the BOP to the Choke Manifold. If this hose is used, a copy of the manufacturer's certification and pressure test chart will be kept on the rig. Attached is an example of a certification and pressure test chart. The manufacturer does not require anchors.

**Testing Procedure:** All BOP testing will be done by an independent service company. Annular pressure tests will be limited to 50% of the working pressure. When nipping up on the 13-5/8" 5M bradenhead and flange, the BOP test will be limited to 3000psi. All BOP tests will include a low pressure test as per BLM regulations. The 3M BOP diagrams are attached. Blind rams will be functioned tested each trip, pipe rams will be functioned tested each day. Because the 9-5/8" casing will be run with a mandrel hanger through the 13-3/8" BOP without breaking any connections, no additional pressure test would be required.

**Choke Diagram Attachment:**

JRU\_DI1\_3M\_CM\_20171226074329.pdf

**BOP Diagram Attachment:**