

District I
1625 N. French Dr., Hobbs, NM 88240
Phone: (575) 393-6161 Fax: (575) 393-0720
District II
811 S. First St., Artesia, NM 88210
Phone: (575) 748-1283 Fax: (575) 748-9720
District III
1000 Rio Brazos Road, Aztec, NM 87410
Phone: (505) 334-6178 Fax: (505) 334-6170
District IV
1220 S. St. Francis Dr., Santa Fe, NM 87505
Phone: (505) 476-3460 Fax: (505) 476-3462

State of New Mexico
Energy, Minerals & Natural Resources Department
OIL CONSERVATION DIVISION
1220 South St. Francis Dr. ARTESIA DISTRICT
Santa Fe, NM 87505

Form C-102
Revised August 1, 2011
Submit one copy to appropriate District Office
☐ AMENDED REPORT

DEC 13 2018

WELL LOCATION AND ACREAGE DEDICATION

¹ API Number 30-015-45550	² Pool Code 60660	³ Pool Name Turkey Track Wildcat Bone Spring
⁴ Property Code 323006	⁵ Property Name PARKWAY 15-14 NORTH STATE COM	
⁷ OGRID No. 215099	⁸ Operator Name CIMAREX ENERGY CO.	
		⁶ Well Number 1H
		⁹ Elevation 3345.0'

"Surface Location

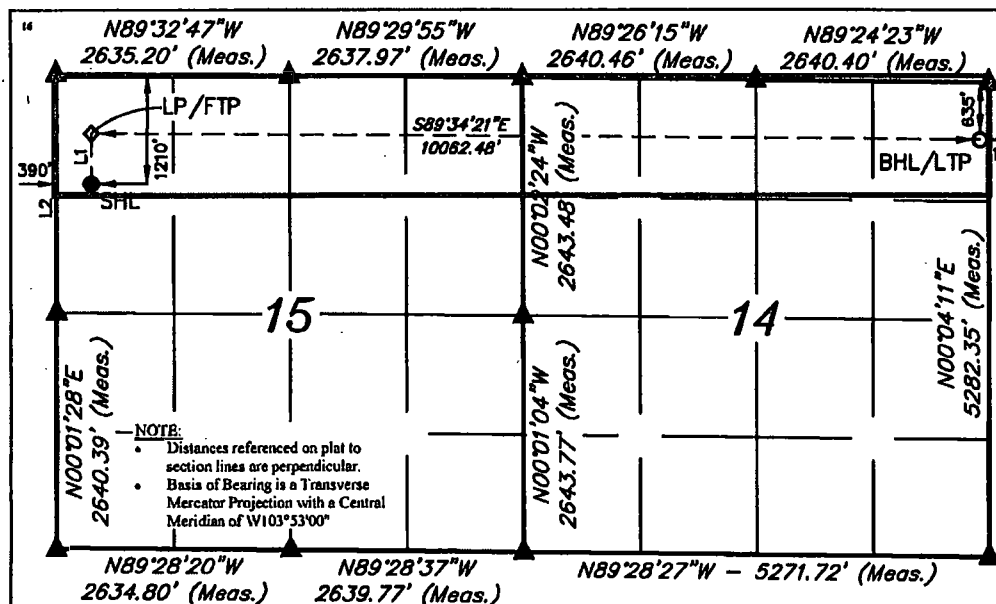
UL or lot no.	Section	Township	Range	Lot Idn	Feet from the	North/South line	Feet from the	East/West line	County
D	15	19S	29E		1210	NORTH	390	WEST	EDDY

"Bottom Hole Location If Different From Surface

UL or lot no.	Section	Township	Range	Lot Idn	Feet from the	North/South line	Feet from the	East/West line	County
A	14	19S	29E		635	NORTH	100	EAST	EDDY

¹¹ Dedicated Acres 320	¹² Joint or Infill	¹³ Consolidation Code	¹⁵ Order No.
--------------------------------------	-------------------------------	----------------------------------	-------------------------

No allowable will be assigned to this completion until all interests have been consolidated or a non-standard unit has been approved by the division.

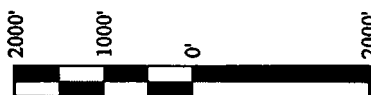


LINE TABLE		
LINE	DIRECTION	LENGTH
L1	N00°02'50"W	557.00'
L2	N00°03'11"W	2842.43'

NAD 83 (SURFACE HOLE LOCATION)	
LATITUDE = 32°39'53.01" (32.664725°)	
LONGITUDE = 104°04'11.80" (104.069943°)	
NAD 27 (SURFACE HOLE LOCATION)	
LATITUDE = 32°39'52.59" (32.664608°)	
LONGITUDE = 104°04'09.97" (104.069436°)	
STATE PLANE NAD 83 (N.M. EAST)	
N: 605658.69' E: 622390.92'	
STATE PLANE NAD 27 (N.M. EAST)	
N: 605596.35' E: 581211.21'	

NAD 83 (BHL/LTP)	
LATITUDE = 32°39'57.94" (32.666094°)	
LONGITUDE = 104°02'14.12" (104.037256°)	
NAD 27 (BHL/LTP)	
LATITUDE = 32°39'57.51" (32.665976°)	
LONGITUDE = 104°02'12.30" (104.036750°)	
STATE PLANE NAD 83 (N.M. EAST)	
N: 606183.15' E: 632448.34'	
STATE PLANE NAD 27 (N.M. EAST)	
N: 606120.72' E: 591268.64'	

- = SURFACE HOLE LOCATION
- ◆ = LANDING POINT/FIRST TAKE POINT
- = BOTTOM HOLE LOCATION/ LAST TAKE POINT
- ▲ = SECTION CORNER LOCATED



SCALE

DRAWN BY: C.M.T. 11-30-18

"OPERATOR CERTIFICATION

I hereby certify that the information contained herein is true and complete to the best of my knowledge and belief, and that this organization either owns a working interest or unleased mineral interest in the land including the proposed bottom hole location or has a right to drill this well at this location pursuant to a contract with an owner of such a mineral or working interest, or to a voluntary pooling agreement or a compulsory pooling order as determined by the division.

Signature: *Aricka Easterling* Date: 12/13/18

Printed Name: Aricka Easterling

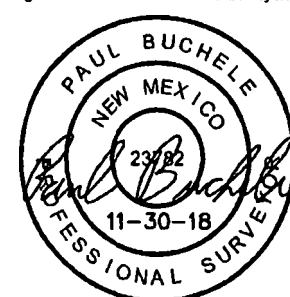
E-mail Address: aeasterling@cimarex.com

"SURVEYOR CERTIFICATION

I hereby certify that the well location shown on this plat was plotted from field notes of actual surveys made by me or under my supervision, and that the same is true and correct to the best of my belief.

November 21, 2018

Date of Survey
Signature and Seal of Professional Surveyor:



Certificate Number:

RWP 12-14-18