

DEC 12 2018

DISTRICT I
1625 N. FREMONT DR., BOHNER, NM 88240
Phone: (575) 253-6181 Fax: (575) 253-0720

DISTRICT II
511 S. FIRST ST., ARTESIA, NM 88210
Phone: (575) 740-1223 Fax: (575) 740-9720

DISTRICT III
1000 RIO BRAZOS RD., AZTEC, NM 87410
Phone: (505) 334-8178 Fax: (505) 334-8170

DISTRICT IV
1220 S. ST. FRANCIS DR., SANTA FE, NM 87505
Phone: (505) 476-3460 Fax: (505) 476-3462

State of New Mexico
Energy, Minerals & Natural Resources Department
OIL CONSERVATION DIVISION
1220 SOUTH ST. FRANCIS DR.
Santa Fe, New Mexico 87505

RECEIVED
Form C-102
Revised August 1, 2011
Submit one copy to appropriate
District Office

☐ AMENDED REPORT

WELL LOCATION AND ACREAGE DEDICATION PLAT

API Number 30-015-45541	Pool Code 98220	Pool Name Purple Sage; Wolfcamp
Property Code 308269	Property Name WAY SOUTH STATE COM	Well Number 701H
GRID No. 229137	Operator Name COG OPERATING, LLC	Elevation 3080.8'

Surface Location

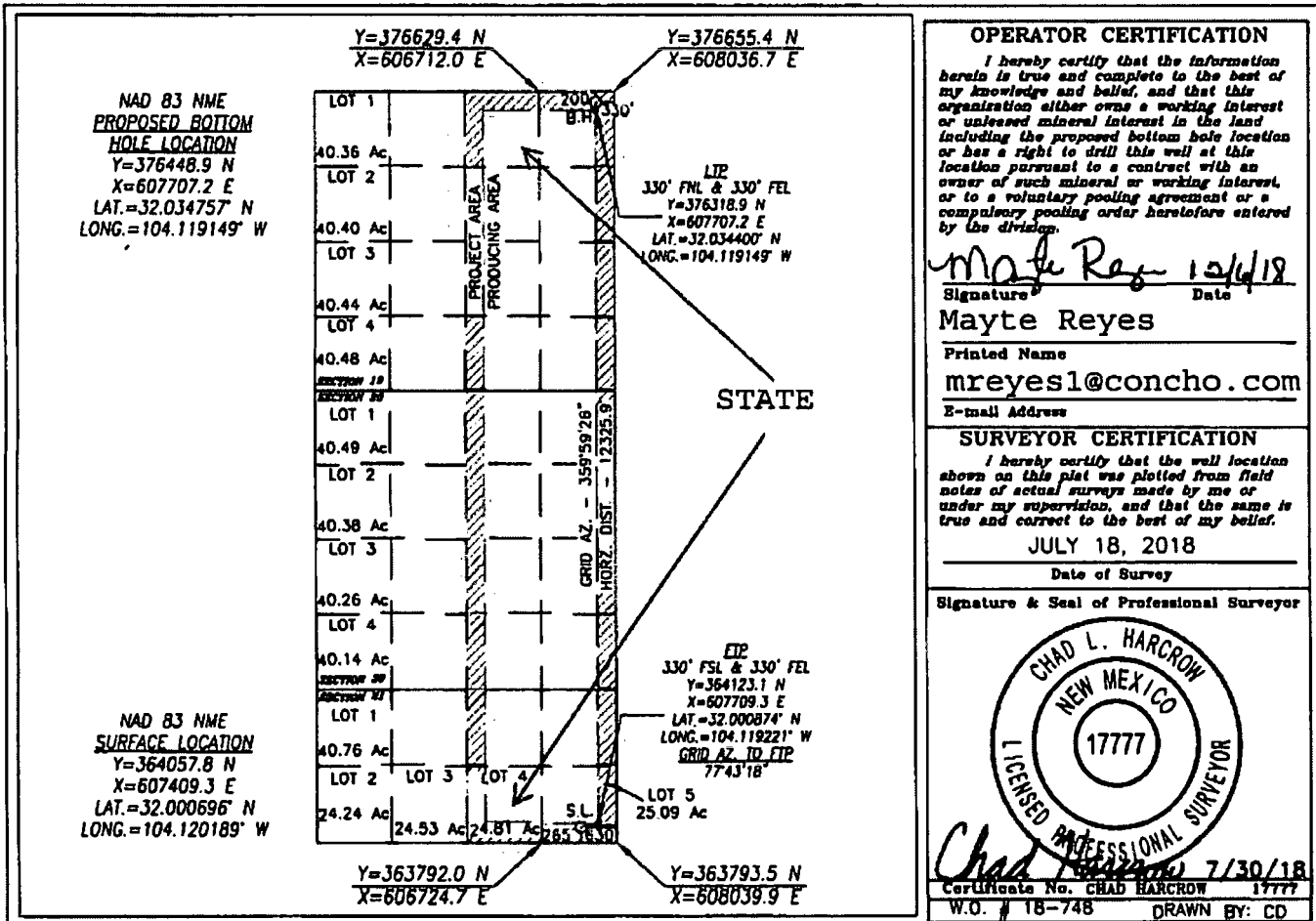
UL or lot No.	Section	Township	Range	Lot Idn	Feet from the	North/South line	Feet from the	East/West line	County
5	31	26-S	28-E		265	SOUTH	630	EAST	EDDY

Bottom Hole Location If Different From Surface

UL or lot No.	Section	Township	Range	Lot Idn	Feet from the	North/South line	Feet from the	East/West line	County
A	19	26-S	28-E		200	NORTH	330	EAST	EDDY

Dedicated Acres	Joint or Infill	Consolidation Code	Order No.
767.59			

**NO ALLOWABLE WILL BE ASSIGNED TO THIS COMPLETION UNTIL ALL INTERESTS HAVE BEEN CONSOLIDATED
OR A NON-STANDARD UNIT HAS BEEN APPROVED BY THE DIVISION**



As per State Land office: Lot 5:23.76 Lot 4: 23.83

RWP12-14-18

Proposed Depth **21,559' MD.**

Proposed Casing and Cement Program

TYPE	HOLE SIZE	CASING SIZE	CASING WT.	SETTING DEPTH	SACKS OF CEMENT	ESTIMATED TOC
SURF	17.5	13.375	54.5	500	400	0
INT 1	12.25	9.625	40	8580	1925	0
PROD	8.50	5.5	17	21,559	3900	8000

Casing/Cement Program: Additional Comments

Plan to drill a 17-1/2" hole to 500' with Fresh Water into the Rustler to cover FW water depth. Run 13-3/8", 54.5# J-55 casing and cement to surface.

1st Intermediate - Drill 12-1/4" hole to 8580' with Brine, and run 9-5/8", 8580' of 40# N/L80 and cement to surface in one stage.

Drill an 8-1/2" curve and lateral with Oil Based Mud (OBM) to approximately 21,559' MD. Run 5-1/2" 17# P110 casing to TD and cement in one stage bringing cement up to 8000' in one stage.

PROPOSED BLOWOUT PREVENTION PROGRAM

12.25" Intermediate Section

On 13-3/8" Surface Casing, Install 3000 psi casing head, NU 13-5/8" Cameron BOP. Test annular and casing to 1500 psi and other BOP equipment to 3000 psi.

8.75" Production Section

On 9-5/8" Intermediate Casing, Install 5000 psi casing spool, NU 13-5/8" Cameron BOP. Test casing to 1500 psi. Test annular to 2500 psi and other BOP equipment to 5000 psi.

Thanks,

Alex