

DEC 12 2018

DISTRICT I
1025 N. FRANKLIN DR., BOWEN, NM 88240
Phone: (505) 852-6181 Fax: (505) 852-0750

DISTRICT II
811 S. FIRST ST., ARTESIA, NM 88210
Phone: (505) 748-1883 Fax: (505) 748-9720

DISTRICT III
1000 RIO BRAZOS RD., AZTEC, NM 87410
Phone: (505) 334-6175 Fax: (505) 334-6170

DISTRICT IV
1220 S. ST. FRANCIS DR., SANTA FE, NM 87505
Phone: (505) 476-3450 Fax: (505) 476-3452

State of New Mexico
Energy, Minerals & Natural Resources Department
OIL CONSERVATION DIVISION
1220 SOUTH ST. FRANCIS DR.
Santa Fe, New Mexico 87505

RECEIVED Form C-102
Revised August 1, 2011
Submit one copy to appropriate
District Office

☐ AMENDED REPORT

WELL LOCATION AND ACREAGE DEDICATION PLAT

API Number 30-015-45545	Pool Code 98220	Pool Name Purple Sage; Wolfcamp
Property Code 308269	Property Name WAY SOUTH STATE COM	Well Number 705H
OGRID No. 229137	Operator Name COG OPERATING, LLC	Elevation 3099.3'

Surface Location

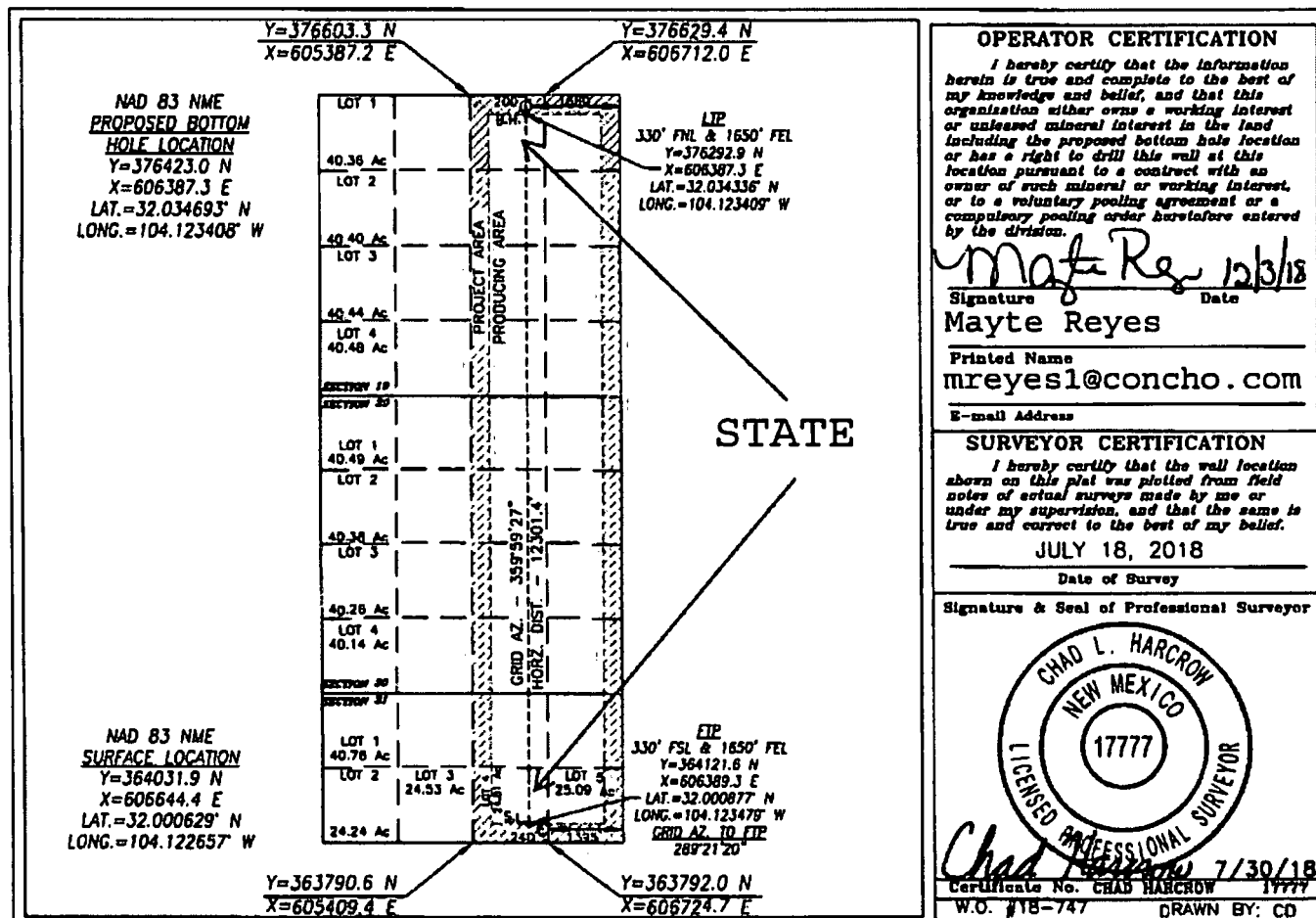
UL or lot No.	Section	Township	Range	Lot Idn	Feet from the	North/South line	Feet from the	East/West line	County
4	31	26-S	28-E		240	SOUTH	1395	EAST	EDDY

Bottom Hole Location If Different From Surface

UL or lot No.	Section	Township	Range	Lot Idn	Feet from the	North/South line	Feet from the	East/West line	County
B	19	26-S	28-E		200	NORTH	1650	EAST	EDDY

Dedicated Acres	Joint or Infill	Consolidation Code	Order No.
767.59			

NO ALLOWABLE WILL BE ASSIGNED TO THIS COMPLETION UNTIL ALL INTERESTS HAVE BEEN CONSOLIDATED OR A NON-STANDARD UNIT HAS BEEN APPROVED BY THE DIVISION



OPERATOR CERTIFICATION

I hereby certify that the information herein is true and complete to the best of my knowledge and belief, and that this organization either owns a working interest or unleased mineral interest in the land including the proposed bottom hole location or has a right to drill this well at this location pursuant to a contract with an owner of such mineral or working interest, or to a voluntary pooling agreement or a compulsory pooling order heretofore entered by the division.

Mayte Reyes 12/3/18
Signature Date

Mayte Reyes

Printed Name
mreyes1@concho.com

E-mail Address

SURVEYOR CERTIFICATION

I hereby certify that the well location shown on this plat was plotted from field notes of actual surveys made by me or under my supervision, and that the same is true and correct to the best of my belief.

JULY 18, 2018

Date of Survey

Signature & Seal of Professional Surveyor



Chad L. Harcrow 7/30/18
Certificate No. CHAD HARCROW 17777
W.O. #18-747 DRAWN BY: CD

As per State Land Office Lot 5: 23.76 Lot 4: 23.83

RW 12-14-18

Way South State Com 705H

Casing and Cement

<u>String</u>	<u>Hole Size</u>	<u>Csg OD</u>	<u>PPF</u>	<u>Depth</u>	<u>Sx Cement</u>	<u>TOC</u>
Surface	17-1/2"	13-3/8"	54.5#	500'	400	0'
Intermediate	12-1/4"	9-5/8"	40#	8,900'	2,400	0'
Production	8-1/2"	5-1/2"	20#	21,580'	3,400	8,500'

Well Plan

Drill 17-1/2" hole to 500' into the Rustler. Run 13-3/8" 54.5# J55 STC casing to TD and cement to surface in one stage. Will set in Rustler and cover water depth.

Drill 12-1/4" hole to ~8,900' with Brine. Run 9-5/8" 40# L-80 casing to TD and cement to surface in one stage.

Drill 8-3/4" vertical hole, curve & lateral to 21,580' with Oil base mud. Run 5-1/2" 20# P110 BTC casing to TD and cement to 8,500' in one stage.

Well Control

After setting 13-3/8" casing and installing 3000 psi casing head, NU 13-5/8" Cameron BOP. Test annular and casing to 1500 psi and other BOP equipment to 3000 psi.

After setting 9-5/8" casing and installing 5000 psi casing spool, NU 13-5/8" Cameron BOP. Test annular to 2500 psi and other BOP equipment to 5000 psi.