

District I  
1625 N. French Dr., Hobbs, NM 88240  
Phone: (575) 393-6161 Fax: (575) 393-0720  
District II  
811 S. First St., Artesia, NM 88210  
Phone: (575) 748-1283 Fax: (575) 748-9720  
District III  
1000 Rio Brazos Road, Aztec, NM 87410  
Phone: (505) 334-6178 Fax: (505) 334-6170  
District IV  
1220 S. St. Francis Dr., Santa Fe, NM 87505  
Phone: (505) 476-3460 Fax: (505) 476-3462

State of New Mexico  
Energy, Minerals & Natural Resources  
Department  
OIL CONSERVATION DIVISION  
1220 South St. Francis Dr.  
Santa Fe, NM 87505

RECEIVED

FORM C-102

Revised August 1, 2011

Submit one copy to appropriate

District Office

DISTRICT II-ARTESIA O.C.D.

AMENDED REPORT

WELL LOCATION AND ACREAGE DEDICATION PLAT

As Drilled

<sup>1</sup> API Number 30-015-44571	<sup>2</sup> Pool Code 96101	<sup>3</sup> Pool Name SWD; Devonian
<sup>4</sup> Property Code 319808	<sup>5</sup> Property Name MALAGA SWD	<sup>6</sup> Well Number #5
<sup>7</sup> OGRID No. 371287	<sup>8</sup> Operator Name BLACK RIVER WATER MANAGEMENT COMPANY, LLC.	<sup>9</sup> Elevation 2976'

<sup>10</sup>Surface Location

UL or lot no.	Section	Township	Range	Lot Idn	Feet from the	North/South line	Feet from the	East/West line	County
L	12	24-S	28-E	-	1779'	SOUTH	975'	WEST	EDDY

<sup>11</sup>Bottom Hole Location If Different From Surface

UL or lot no.	Section	Township	Range	Lot Idn	Feet from the	North/South line	Feet from the	East/West line	County
L	12	24-S	28-E	-	1648'	SOUTH	858'	WEST	EDDY

<sup>12</sup> Dedicated Acres	<sup>13</sup> Joint or Infill	<sup>14</sup> Consolidation Code	<sup>15</sup> Order No.
-------------------------------	-------------------------------	----------------------------------	-------------------------

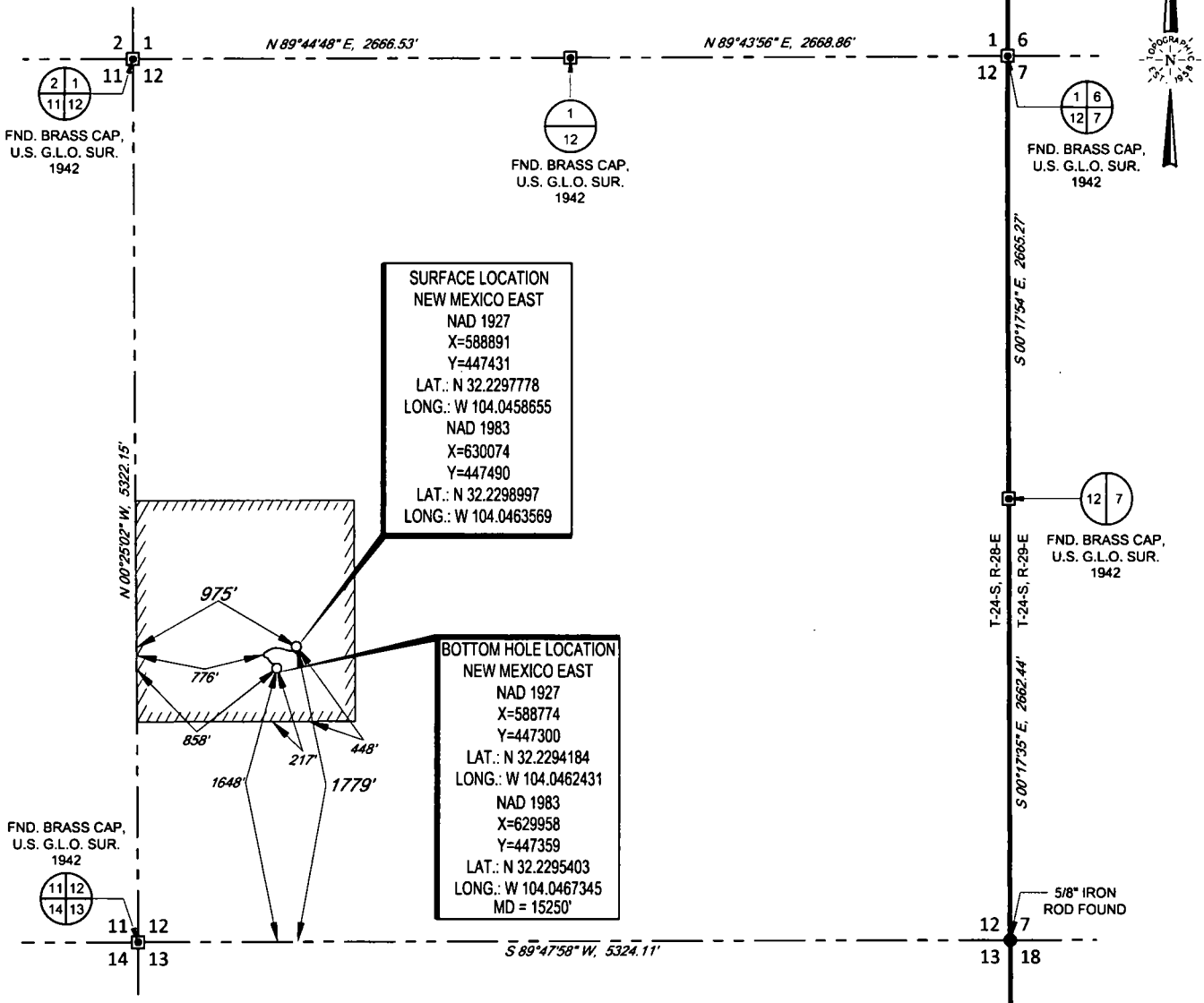
No allowable will be assigned to this completion until all interests have been consolidated or a non-standard unit has been approved by the division.

<p><b>SURFACE LOCATION</b> NEW MEXICO EAST NAD 1927 X=588891 Y=447431 LAT.: N 32.2297778 LONG.: W 104.0458655 NAD 1983 X=630074 Y=447490 LAT.: N 32.2298997 LONG.: W 104.0463569</p> <p><b>BOTTOM HOLE LOCATION</b> NEW MEXICO EAST NAD 1927 X=588774 Y=447300 LAT.: N 32.2294184 LONG.: W 104.0462431 NAD 1983 X=629958 Y=447359 LAT.: N 32.2295403 LONG.: W 104.0467345 MD = 15250'</p>	<p><b><sup>17</sup>OPERATOR CERTIFICATION</b></p> <p>I hereby certify that the information contained herein is true and complete to the best of my knowledge and belief, and that this organization either owns a working interest or unleased mineral interest in the land including the proposed bottom hole location or has a right to drill this well at this location pursuant to a contract with an owner of such a mineral or working interest, or to a voluntary pooling agreement or a compulsory pooling order heretofore entered by the division.</p> <p><i>M. Brooks Verschyle</i> 8/10/2018 Signature Date</p> <p>M. Brooks Verschyle Printed Name Surface Land Manager</p> <p>bverschyle@matadorresources.com E-mail Address</p> <p><b><sup>18</sup>SURVEYOR CERTIFICATION</b></p> <p>I hereby certify that the well location shown on this plat was plotted from field notes of actual surveys made by me or under my supervision, and that the same is true to the best of my belief.</p> <p>11/01/2017 Date of Survey</p> <p><i>Michael B. Brown</i> Signature</p> <p>18329 Professional Surveyor</p> <p>Certificate Number</p>
---------------------------------------------------------------------------------------------------------------------------------------------------------------------------------------------------------------------------------------------------------------------------------------------------------------------------------------------------------------------------------------------------------------------------------------------------------------------------------------	--------------------------------------------------------------------------------------------------------------------------------------------------------------------------------------------------------------------------------------------------------------------------------------------------------------------------------------------------------------------------------------------------------------------------------------------------------------------------------------------------------------------------------------------------------------------------------------------------------------------------------------------------------------------------------------------------------------------------------------------------------------------------------------------------------------------------------------------------------------------------------------------------------------------------------------------------------------------------------------------------------------------------------------------------------------------------------------------------------------------------------------------------------------------------

SCALE: 1" = 1000'

0' 500' 1000'

SECTION 12, TOWNSHIP 24-S, RANGE 28-E, N.M.P.M.  
EDDY COUNTY, NEW MEXICO



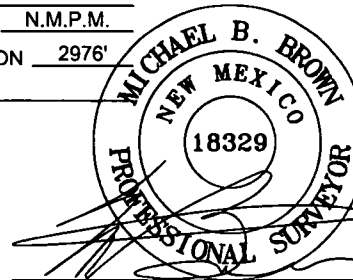
LEASE NAME & WELL NO.: MALAGA SWD #5  
 SECTION 12 TWP 24-S RGE 28-E SURVEY N.M.P.M.  
 COUNTY EDDY STATE NM ELEVATION 2976'  
 DESCRIPTION 1779' FSL & 975' FWL



**TOPOGRAPHIC**  
LOYALTY INNOVATION LEGACY

1400 EVERMAN PARKWAY, Ste. 146 • FT. WORTH, TEXAS 76140  
 TELEPHONE: (817) 744-7512 • FAX (817) 744-7554  
 2903 NORTH BIG SPRING • MIDLAND, TEXAS 79705  
 TELEPHONE: (432) 682-1653 OR (800) 767-1653 • FAX (432) 682-1743  
 WWW.TOPOGRAPHIC.COM

**BLACK RIVER WATER  
MANAGEMENT COMPANY, LLC.**



Michael Blake Brown, P.S. No. 18329  
AUGUST 08, 2018

MALAGA SWD #5 AS-DRILLED	REVISION:		NOTES:
	INT	DATE	
DATE: 08/08/18			1. ORIGINAL DOCUMENT SIZE: 8.5" X 11" 2. ALL BEARINGS, DISTANCES, AND COORDINATE VALUES CONTAINED HEREIN ARE GRID BASED UPON THE NEW MEXICO STATE PLANE COORDINATE SYSTEM, EAST ZONE, U.S. SURVEY FEET, NORTH AMERICAN DATUM 1983. 3. CERTIFICATION IS MADE ONLY TO THE LOCATION OF THIS EASEMENT, IN RELATION TO THE EVIDENCE FOUND DURING A FIELD SURVEY, MADE ON THE GROUND, UNDER MY SUPERVISION, AND USING DOCUMENTATION PROVIDED BY BLACK RIVER WATER MANAGEMENT COMPANY, LLC. ONLY UTILITIES/EASEMENTS THAT WERE VISIBLE ON THE DATE OF THIS SURVEY, WITHIN/ADJOINING THIS EASEMENT, HAVE BEEN LOCATED AS SHOWN HEREON OF WHICH I HAVE KNOWLEDGE. THIS CERTIFICATION IS LIMITED TO THOSE PERSONS OR ENTITIES SHOWN ON THE FACE OF THIS PLAT AND IS NON-TRANSFERABLE, AND MADE FOR THIS TRANSACTION ONLY. 4. ADJOINER INFORMATION SHOWN FOR INFORMATIONAL PURPOSES ONLY.
FILE:AD_MALAGA_SWD_5_C102			
DRAWN BY: JLS			
SHEET: 1 OF 1			