

RECEIVED

DISTRICT I
1625 N. French Dr., Hobbs, NM 88240
Phone: (575) 393-6161 Fax: (575) 393-0720

DISTRICT II
811 S. First St., Artesia, NM 88210
Phone: (505) 334-6178 Fax: (505) 748-9720

DISTRICT III
1000 Rio Brazos Road, Aztec, NM 87410
Phone: (505) 334-6178 Fax: (505) 334-6170

DISTRICT IV
1220 S. St. Francis Dr., Santa Fe, NM 87505
Phone: (505) 476-3460 Fax: (505) 476-3462

State of New Mexico
Energy, Minerals & Natural Resources Department
OIL CONSERVATION DIVISION
1220 South St. Francis Dr.
Santa Fe, New Mexico 87505

JAN 30 2019

Form C-102

Revised August 1, 2011

Submit one copy to appropriate

District Office

DISTRICT II-ARTESIA O.C.D.

AMENDED REPORT

WELL LOCATION AND ACREAGE DEDICATION PLAT

API Number 30-015- 45678	Pool Code 97565	Pool Name N. SEVEN RIVERS; GLORIETA-YESO
Property Code 324926	Property Name LAKEWOOD FEDERAL COM	Well Number 10H
OGRID No. 371755	Operator Name PERCUSSION PETROLEUM OPERATING, LLC	Elevation 3478'

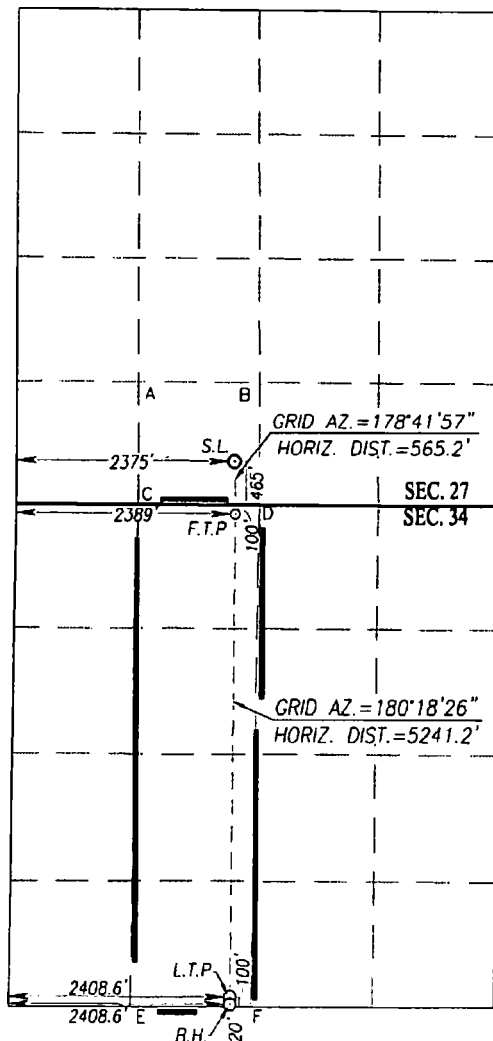
State surface / State mess

UL or lot No.	Section	Township	Range	Lot Idn	Feet from the	North/South line	Feet from the	East/West line	County
N	27	19-S	25-E		465	SOUTH	2375	WEST	EDDY

UL or lot No.	Section	Township	Range	Lot Idn	Feet from the	North/South line	Feet from the	East/West line	County
N	34	19-S	25-E		20	SOUTH	2408.6	WEST	EDDY

Dedicated Acres 160	Joint or Infill	Consolidation Code C	Order No. 2409
-------------------------------	-----------------	--------------------------------	--------------------------

NO ALLOWABLE WILL BE ASSIGNED TO THIS COMPLETION UNTIL ALL INTERESTS HAVE BEEN CONSOLIDATED OR A NON-STANDARD UNIT HAS BEEN APPROVED BY THE DIVISION



SCALE: 1"=2000'

GEODETTIC COORDINATES NAD 83 NME SURFACE LOCATION Y=591395.9 N X=498213.7 E LAT.=32.625719° N LONG.=104.473407° W	GEODETTIC COORDINATES NAD 27 NME SURFACE LOCATION Y=591335.1 N X=457035.2 E LAT.=32.625606° N LONG.=104.472887° W
--	--

FIRST TAKE POINT NAD 83 NME Y= 590831.0 N X= 498226.6 E LAT.=32.624166° N LONG.=104.473363° W	FIRST TAKE POINT NAD 27 NME Y= 590770.2 N X= 457048.1 E LAT.=32.624053° N LONG.=104.472843° W
---	---

CORNER COORDINATES TABLE

NAD 27 NME

A - Y= 592208.5 N, X= 455983.1 E
B - Y= 592200.1 N, X= 457305.0 E
C - Y= 590876.2 N, X= 455985.8 E
D - Y= 590868.6 N, X= 457311.0 E
E - Y= 585514.1 N, X= 455932.2 E
F - Y= 585509.7 N, X= 457253.0 E

CORNER COORDINATES TABLE

NAD 83 NME

A - Y= 592269.3 N, X= 497161.6 E
B - Y= 592260.9 N, X= 498483.5 E
C - Y= 590937.0 N, X= 497164.3 E
D - Y= 590929.4 N, X= 498489.5 E
E - Y= 585574.7 N, X= 497110.7 E
F - Y= 585570.3 N, X= 498431.5 E

LAST TAKE POINT

NAD 83 NME

Y= 585671.1 N
X= 498198.9 E
LAT.=32.609983° N
LONG.=104.473431° W

LAST TAKE POINT

NAD 27 NME

Y= 585610.4 N
X= 457020.4 E
LAT.=32.609870° N
LONG.=104.472911° W

BOTTOM HOLE LOCATION

NAD 83 NME

Y= 585591.1 N
X= 498198.5 E
LAT.=32.609763° N
LONG.=104.473432° W

BOTTOM HOLE LOCATION

NAD 27 NME

Y= 585530.5 N
X= 457019.9 E
LAT.=32.609650° N
LONG.=104.472912° W

OPERATOR CERTIFICATION

I hereby certify that the information herein is true and complete to the best of my knowledge and belief, and that this organization either owns a working interest or unleased mineral interest in the land including the proposed bottom hole location or has a right to drill this well at this location pursuant to a contract with an owner of such mineral or working interest, or to a voluntary pooling agreement or a compulsory pooling order heretofore entered by the Division.

Brian Wood
Signature

6-25-18

Date

BRIAN WOOD

Printed Name

brian@permitswest.com

E-mail Address

505 466-8120

SURVEYOR CERTIFICATION

I hereby certify that the well location shown on this plat was plotted from field notes of actual surveys made by me or under my supervision, and that the same is true and correct to the best of my belief.

FEBRUARY 27, 2018

Date of Survey

Signature of Professional Surveyor

Ronald J. Eidson
REGISTRED PROFESSIONAL SURVEYOR
3239

Ronald J. Eidson
Certificate Number
Gary G. Eidson 12641
Ronald J. Eidson 3239

ACK REV 3/26/18

JWSC W.O.: 18.11.0113

Ruf 2-1-19