

NM OIL CONSERVATION
ARTESIA DISTRICT

FEB 04 2019

Intent ☒ As Drilled ☐

RECEIVED

| | | | |
|----------------------------------|--|--|---------------------|
| API # 30-015- 45681 | | | |
| Operator Name: OXY USA WTP LP | | Property Name: TURKEY TRACK 8-7 STATE | Well Number 201H |

Kick Off Point (KOP)

| | | | | | | | | | |
|------------------------|--------------|-----------------|--------------|-----|---------------------------|-----------------|------------|-----------------|----------------|
| UL D | Section 9 | Township 19S | Range 29E | Lot | Feet 380 | From N/S FNL | Feet 70 | From E/W FWL | County EDDY |
| Latitude 32.6815137 | | | | | Longitude -104.0881313 | | | NAD NAD83 | |

First Take Point (FTP)

| | | | | | | | | | |
|------------------------|--------------|-----------------|--------------|-----|---------------------------|-----------------|-------------|-----------------|----------------|
| UL A | Section 8 | Township 19S | Range 29E | Lot | Feet 379 | From N/S FNL | Feet 100 | From E/W FEL | County EDDY |
| Latitude 32.6815177 | | | | | Longitude -104.0886838 | | | NAD NAD83 | |

Last Take Point (LTP)

| | | | | | | | | | |
|------------------------|--------------|-----------------|--------------|-----|---------------------------|-----------------|-------------|-----------------|----------------|
| UL D | Section 7 | Township 19S | Range 29E | Lot | Feet 380 | From N/S FNL | Feet 100 | From E/W FWL | County EDDY |
| Latitude 32.6817540 | | | | | Longitude -104.1216419 | | | NAD NAD83 | |

Is this well the defining well for the Horizontal Spacing Unit? ☐

Is this well an infill well? ☐

If infill is yes please provide API if available, Operator Name and well number for Defining well for Horizontal Spacing Unit.

| | | | |
|----------------|--|----------------|-------------|
| API # | | | |
| Operator Name: | | Property Name: | Well Number |
| | | | |

KZ 06/29/2018

Oxy USA Inc. - Turkey Track 8-7 State 201H

1. Geologic Formations

| | | | |
|---------------|--------|-------------------------------|------|
| TVD of target | 7879' | Pilot Hole Depth | N/A |
| MD at TD: | 18539' | Deepest Expected fresh water: | 250' |

Delaware Basin

| Formation | TVD - RKB | Expected Fluids |
|-----------------|-----------|-----------------|
| Rustler | 250 | |
| Salado | 320 | Salt |
| Tansill | 1,071 | |
| Yates | 1,147 | |
| Seven Rivers | 1,462 | |
| Queen | 2,049 | |
| Grayburg | 2,435 | |
| San Andres | 2,932 | |
| Lamar/Delaware | 3,067 | |
| Bone Spring | 3,770 | Oil/Gas |
| 1st Bone Spring | 6,785 | Oil/Gas |
| 2nd Bone Spring | 6,915 | Oil/Gas |

*H2S, water flows, loss of circulation, abnormal pressures, etc.

2. Casing Program

| Hole Size (in) | Casing Interval | | Csg. Size (in) | Weight (lbs) | Grade | Conn. | SF | SF Burst | Buoyant | |
|-------------------------------|-----------------|---------|----------------|--------------|-------|-------|----------|----------|-----------------|------------------|
| | From (ft) | To (ft) | | | | | Collapse | | Body SF Tension | Joint SF Tension |
| 17.5 | 0 | 270 | 13.375 | 54.5 | J-55 | BTC | 1.125 | 1.2 | 1.4 | 1.4 |
| 12.25 | 0 | 3117 | 9.625 | 36 | J-55 | BTC | 1.125 | 1.2 | 1.4 | 1.4 |
| 8.5 | 0 | 18539 | 5.5 | 20 | P-110 | DQX | 1.125 | 1.2 | 1.4 | 1.4 |
| SF Values will meet or Exceed | | | | | | | | | | |

All casing strings will be tested in accordance with Onshore Oil and Gas Order #2 III.B.1.h

*Oxy requests the option to set casing shallower yet still below the salts if losses or hole conditions require this. Cement volumes may be adjusted if casing is set shallower and a DV tool may be run in case hole conditions merit pumping a second stage cement job to comply with permitted top of cement. If cement circulated to surface during first stage, we will drop a cancelation cone and not pump the second stage.

*Oxy requests the option to run production casing with DQX and/or SF TORQ connections to accommodate hole conditions or drilling operations.

Annular Clearance Variance Request

As per the agreement reached in the Oxy/BLM meeting on Feb 22, 2018, Oxy requests permission to allow deviation from the 0.422" annular clearance requirement from Onshore Order #2 under the following conditions:

1. Annular clearance to meet or exceed 0.422" between intermediate casing ID and production casing coupling only on the first 500' overlap between both casings.
2. Annular clearance less than 0.422" is acceptable for the curve and lateral portions of the production open hole section.

Oxy USA Inc. - Turkey Track 8-7 State 201H

| | |
|--|--------|
| | Y or N |
| Is casing new? If used, attach certification as required in Onshore Order #1 | Y |
| Does casing meet API specifications? If no, attach casing specification sheet. | Y |
| Is premium or uncommon casing planned? If yes attach casing specification sheet. | Y |
| Does the above casing design meet or exceed BLM's minimum standards? If not provide justification (loading assumptions, casing design criteria). | Y |
| Will the intermediate pipe be kept at a minimum 1/3 fluid filled to avoid approaching the collapse pressure rating of the casing? | Y |
| Is well located within Capitan Reef? | N |
| If yes, does production casing cement tie back a minimum of 50' above the Reef? | |
| Is well within the designated 4 string boundary. | |
| Is well located in SOPA but not in R-111-P? | N |
| If yes, are the first 2 strings cemented to surface and 3 rd string cement tied back 500' into previous casing? | |
| Is well located in R-111-P and SOPA? | N |
| If yes, are the first three strings cemented to surface? | |
| Is 2 nd string set 100' to 600' below the base of salt? | |
| Is well located in high Cave/Karst? | N |
| If yes, are there two strings cemented to surface? | |
| (For 2 string wells) If yes, is there a contingency casing if lost circulation occurs? | |
| Is well located in critical Cave/Karst? | N |
| If yes, are there three strings cemented to surface? | |

3. Cementing Program

| Casing String | # Sks | Wt. (lb/gal) | Yld (ft ³ /sack) | H2O (gal/sk) | 500# Comp. Strength (hours) | Slurry Description |
|---------------------|-------|-----------------|--------------------------------|-----------------|--------------------------------------|--|
| Surface (Lead) | N/A | N/A | N/A | N/A | N/A | N/A |
| Surface (Tail) | 293 | 14.8 | 1.33 | 6.365 | 5:26 | Class C Cement, Accelerator |
| Intermediate (Lead) | 694 | 12.9 | 1.73 | 8.784 | 15:26 | Pozzolan Cement, Retarder |
| Intermediate (Tail) | 156 | 14.8 | 1.33 | 6.368 | 7:11 | Class C Cement, Accelerator |
| Production (Lead) | 866 | 11.9 | 2.24 | 12.327 | 14:46 | Class H Cement, Retarder, Dispersant, Salt |
| Production (Tail) | 2201 | 13.2 | 1.38 | 6.686 | 3:49 | Class H Cement, Retarder, Dispersant, Salt |

| Casing String | Top (ft) | Bottom (ft) | % Excess |
|---------------------|----------|-------------|----------|
| Surface (Lead) | N/A | N/A | N/A |
| Surface (Tail) | 0 | 270 | 100% |
| Intermediate (Lead) | 0 | 2617 | 50% |
| Intermediate (Tail) | 2617 | 3117 | 20% |
| Production (Lead) | 2617 | 7053 | 100% |
| Production (Tail) | 7053 | 18539 | 15% |

Oxy USA Inc. - Turkey Track 8-7 State 201H

4. Pressure Control Equipment

| BOP installed and tested before drilling which hole? | Size? | Min. Required WP | Type | ✓ | Tested to: |
|--|---------|------------------|------------|---|-------------------------|
| 12.25" Hole | 13-5/8" | 3M | Annular | ✓ | 70% of working pressure |
| | | 3M | Blind Ram | ✓ | 250 psi / 3000 psi |
| | | | Pipe Ram | | |
| | | | Double Ram | ✓ | |
| | | | Other* | | |
| 8.5" Hole | 13-5/8" | 3M | Annular | ✓ | 70% of working pressure |
| | | 3M | Blind Ram | ✓ | 250 psi / 3000 psi |
| | | | Pipe Ram | | |
| | | | Double Ram | ✓ | |
| | | | Other* | | |

*Specify if additional ram is utilized.

BOP/BOPE will be tested by an independent service company to 250 psi low and the high pressure indicated above per Onshore Order 2 requirements. The System may be upgraded to a higher pressure but still tested to the working pressure listed in the table above. If the system is upgraded all the components installed will be functional and tested.

Pipe rams will be operationally checked each 24 hour period. Blind rams will be operationally checked on each trip out of the hole. These checks will be noted on the daily tour sheets. Other accessories to the BOP equipment will include a Kelly cock and floor safety valve (inside BOP) and choke lines and choke manifold. See attached schematics.

| | |
|---|--|
| | Formation integrity test will be performed per Onshore Order #2. On Exploratory wells or on that portion of any well approved for a 5M BOPE system or greater, a pressure integrity test of each casing shoe shall be performed. Will be tested in accordance with Onshore Oil and Gas Order #2 III.B.1.i. |
| | A variance is requested for the use of a flexible choke line from the BOP to Choke Manifold. See attached for specs and hydrostatic test chart. |
| Y | Are anchors required by manufacturer? |
| | A multibowl or a unionized multibowl wellhead system will be employed. The wellhead and connection to the BOPE will meet all API 6A requirements. The BOP will be tested per Onshore Order #2 after installation on the surface casing which will cover testing requirements for a maximum of 30 days. If any seal subject to test pressure is broken the system must be tested. We will test the flange connection of the wellhead with a test port that is directly in the flange. We are proposing that we will run the wellhead through the rotary prior to cementing surface casing as discussed with the BLM on October 8, 2015. See attached schematics. |

Oxy USA Inc. - Turkey Track 8-7 State 201H

BOP Break Testing Request

As per the agreement reached in the Oxy/BLM meeting on Feb 22, 2018, Oxy requests permission to allow BOP Break Testing under the following conditions:

- After a full BOP test is conducted on the first well on the pad.
- When skidding to drill an intermediate section that does not penetrate into the Wolfcamp.
- Full BOP test will be required prior to drilling any production hole.

5. Mud Program

| Depth | | Type | Weight (ppg) | Viscosity | Water Loss |
|-----------|---------|--|--------------|-----------|------------|
| From (ft) | To (ft) | | | | |
| 0 | 400 | Water-Based Mud | 8.6-8.8 | 40-60 | N/C |
| 400 | 3117 | Saturated Brine-Based Mud | 9.8-10.0 | 35-45 | N/C |
| 3117 | 18539 | Saturated Brine-Based or Oil-Based Mud | 8.0-9.6 | 38-50 | N/C |

Sufficient mud materials to maintain mud properties and meet minimum lost circulation and weight increase requirements will be kept on location at all times. The following is a general list of products: Barite, Bentonite, Gypsum, Lime, Soda Ash, Caustic Soda, Nut Plug, Cedar Fiber, Cotton Seed Hulls, Drilling Paper, Salt Water Clay, CACL2. Oxy will use a closed mud system.

| | |
|---|--------------------------------|
| What will be used to monitor the loss or gain of fluid? | PVT/MD Totco/Visual Monitoring |
|---|--------------------------------|

6. Logging and Testing Procedures

| Logging, Coring and Testing. | |
|------------------------------|---|
| Yes | Will run GR from TD to surface (horizontal well – vertical portion of hole). Stated logs run will be in the Completion Report and submitted to the BLM. |
| No | Logs are planned based on well control or offset log information. |
| No | Drill stem test? If yes, explain |
| No | Coring? If yes, explain |

| Additional logs planned | Interval |
|-------------------------|-------------|
| No | Resistivity |
| No | Density |
| No | CBL |
| Yes | Mud log |
| No | PEX |

Oxy USA Inc. - Turkey Track 8-7 State 201H

7. Drilling Conditions

| Condition | Specify what type and where? |
|-------------------------------|------------------------------|
| BH Pressure at deepest TVD | 3934 psi |
| Abnormal Temperature | No |
| BH Temperature at deepest TVD | 144°F |

Pump high viscosity sweeps as needed for hole cleaning. The mud system will be monitored visually/manually as well as with an electronic PVT. The necessary mud products for additional weight and fluid loss control will be on location at all times. Appropriately weighted mud will be used to isolate potential gas, oil, and water zones until such time as casing can be cemented into place for zonal isolation.

Hydrogen Sulfide (H₂S) monitors will be installed prior to drilling out the surface shoe. If H₂S is detected in concentrations greater than 100 ppm, the operator will comply with the provisions of Onshore Oil and Gas Order #6. If Hydrogen Sulfide is encountered, measured values and formations will be provided to the BLM.

| | |
|---|--------------------------------|
| N | H ₂ S is present |
| Y | H ₂ S Plan attached |

8. Other facets of operation

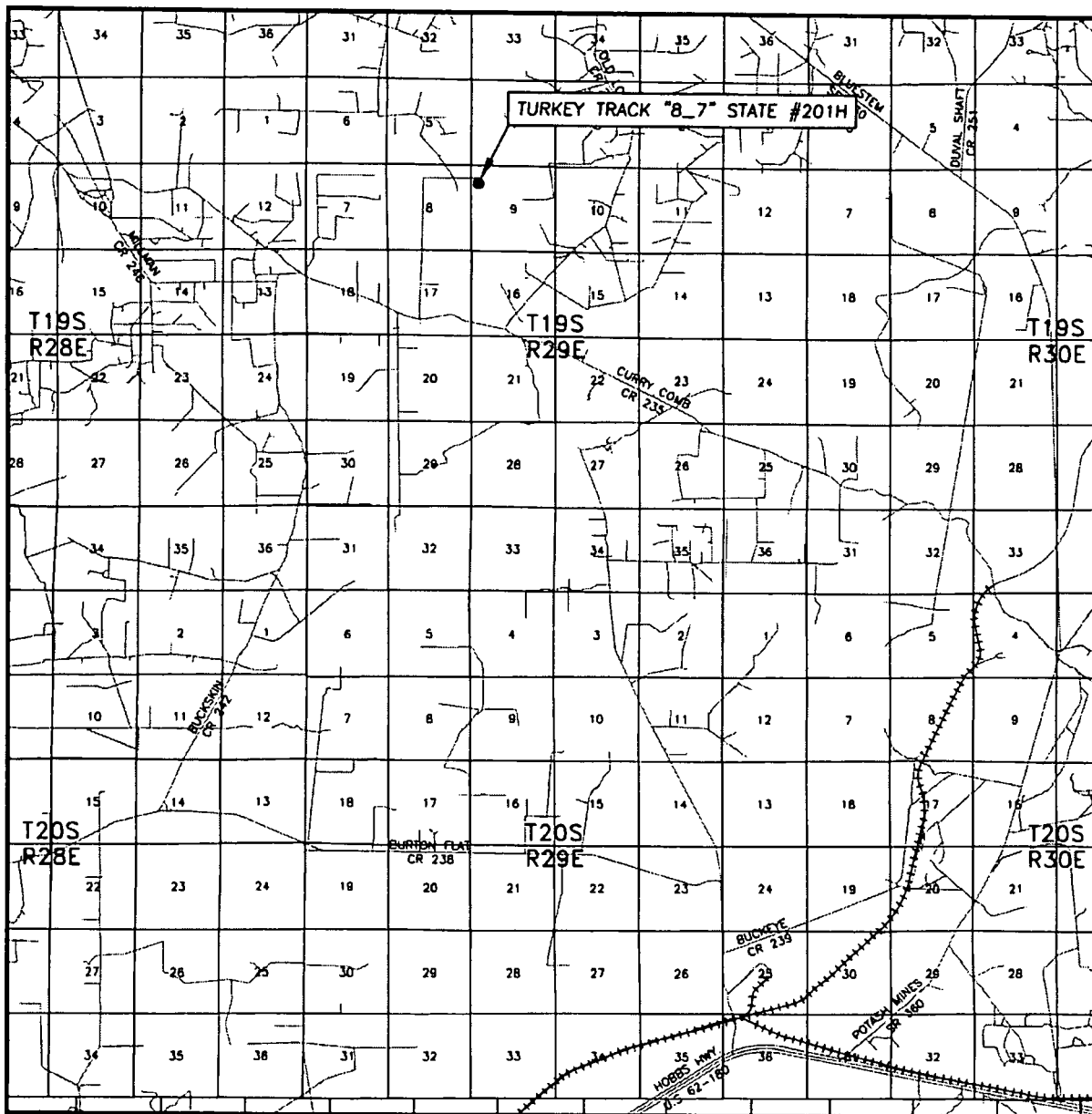
| | Yes/No |
|--|--------|
| Will the well be drilled with a walking/skidding operation? If yes, describe. <ul style="list-style-type: none"> We plan to drill the three well pad in batch by section: all surface sections, intermediate sections and production sections. The wellhead will be secured with a night cap whenever the rig is not over the well. | Yes |
| Will more than one drilling rig be used for drilling operations? If yes, describe. <ul style="list-style-type: none"> Oxy requests the option to contract a Surface Rig to drill, set surface casing, and cement for this well. If the timing between rigs is such that Oxy would not be able to preset surface, the Primary Rig will MIRU and drill the well in its entirety per the APD. Please see the attached document for information on the spudder rig. | Yes |

Total estimated cuttings volume: 1597.5 bbls.

9. Company Personnel

| Name | Title | Office Phone | Mobile Phone |
|--------------------|------------------------------|--------------|--------------|
| Edgar Diaz-Aguirre | Drilling Engineer | 713-552-8594 | 713-550-2699 |
| Diego Tellez | Drilling Engineer Supervisor | 713-350-4602 | 713-303-4932 |
| Simon Benavides | Drilling Superintendent | 713-522-8652 | 281-684-6897 |
| John Willis | Drilling Manager | 713-366-5556 | 713-259-1417 |

VICINITY MAP



SEC. 9 TWP. 19-S RGE. 29-E
 SURVEY N.M.P.M.
 COUNTY EDDY
 DESCRIPTION 1114' FNL & 475' FWL
 ELEVATION 3396.3'
 OPERATOR OXY USA INC.

SCALE: 1" = 2 MILES

Asel Surveying

P.O. BOX 393 - 310 W. TAYLOR
 HOBBS, NEW MEXICO - 575-393-9146

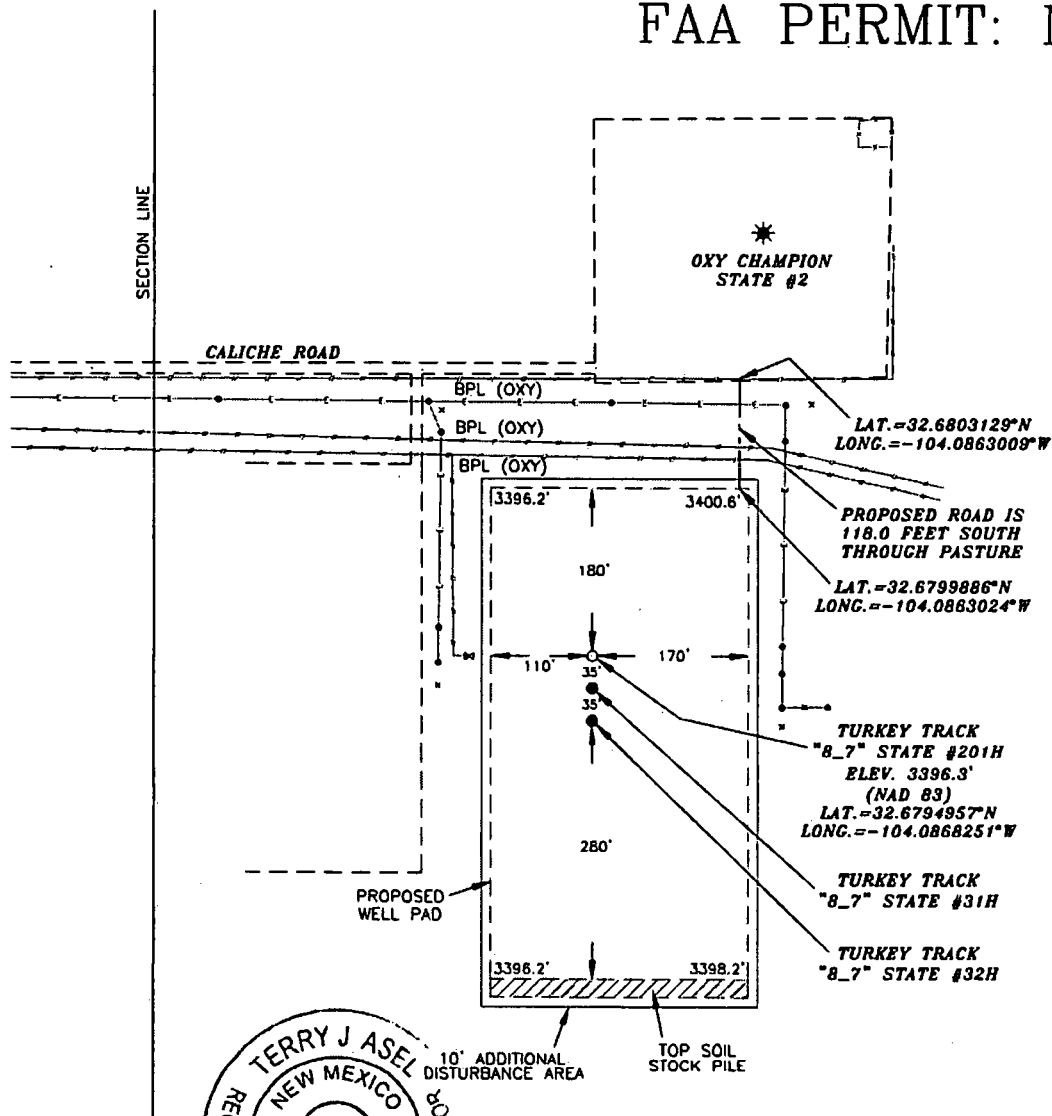


LEASE TURKEY TRACK "8_7" STATE #201H

DIRECTIONS FROM THE INTERSECTION OF U.S. HWY. #62/180 AND STATE ROAD #360 (POTASH MINES ROAD),
GO NORTHEASTERLY ON STATE ROAD #360 FOR 5.7 MILES, TURN LEFT ON COUNTY ROAD #235 (CURRY COMB
ROAD) AND GO NORTHWESTERLY FOR 9.2 MILES, TURN RIGHT ON CALICHE ROAD AND GO NORTH FOR 1.7 MILES,
TURN RIGHT AND GO EAST FOR 0.7 MILES, TURN RIGHT ON PROPOSED ROAD AND GO SOUTH FOR 118.0 FEET
TO LOCATION.

OXY USA INC. TURKEY TRACK "8_7" STATE #201H SITE PLAN

FAA PERMIT: NO



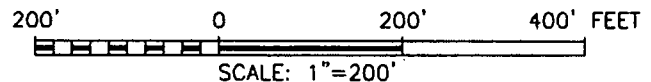
SURVEYORS CERTIFICATE

I, TERRY J. ASEL, NEW MEXICO PROFESSIONAL SURVEYOR NO. 15079, DO HEREBY CERTIFY THAT I CONDUCTED AND AM RESPONSIBLE FOR THIS SURVEY, THAT THIS SURVEY IS TRUE AND CORRECT TO THE BEST OF MY KNOWLEDGE AND BELIEF, AND MEETS THE MINIMUM STANDARDS FOR SURVEYING IN NEW MEXICO AS ADOPTED BY THE NEW MEXICO STATE BOARD OF REGISTRATION FOR PROFESSIONAL ENGINEERS AND SURVEYORS.

Terry J. Asel 12/26/2018
Terry J. Asel N.M. R.P.L.S. No. 15079

LEGEND

- DENOTES PROPOSED WELL PAD
- DENOTES PROPOSED ROAD
- /// DENOTES STOCK PILE AREA
- * DENOTES EXISTING WELL

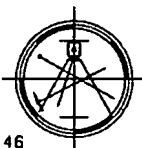


OXY USA INC.

TURKEY TRACK "8_7" STATE #201H LOCATED
AT 1114' FNL & 475' FWL IN SECTION 9,
TOWNSHIP 19 SOUTH, RANGE 29 EAST,
N.M.P.M., EDDY COUNTY, NEW MEXICO

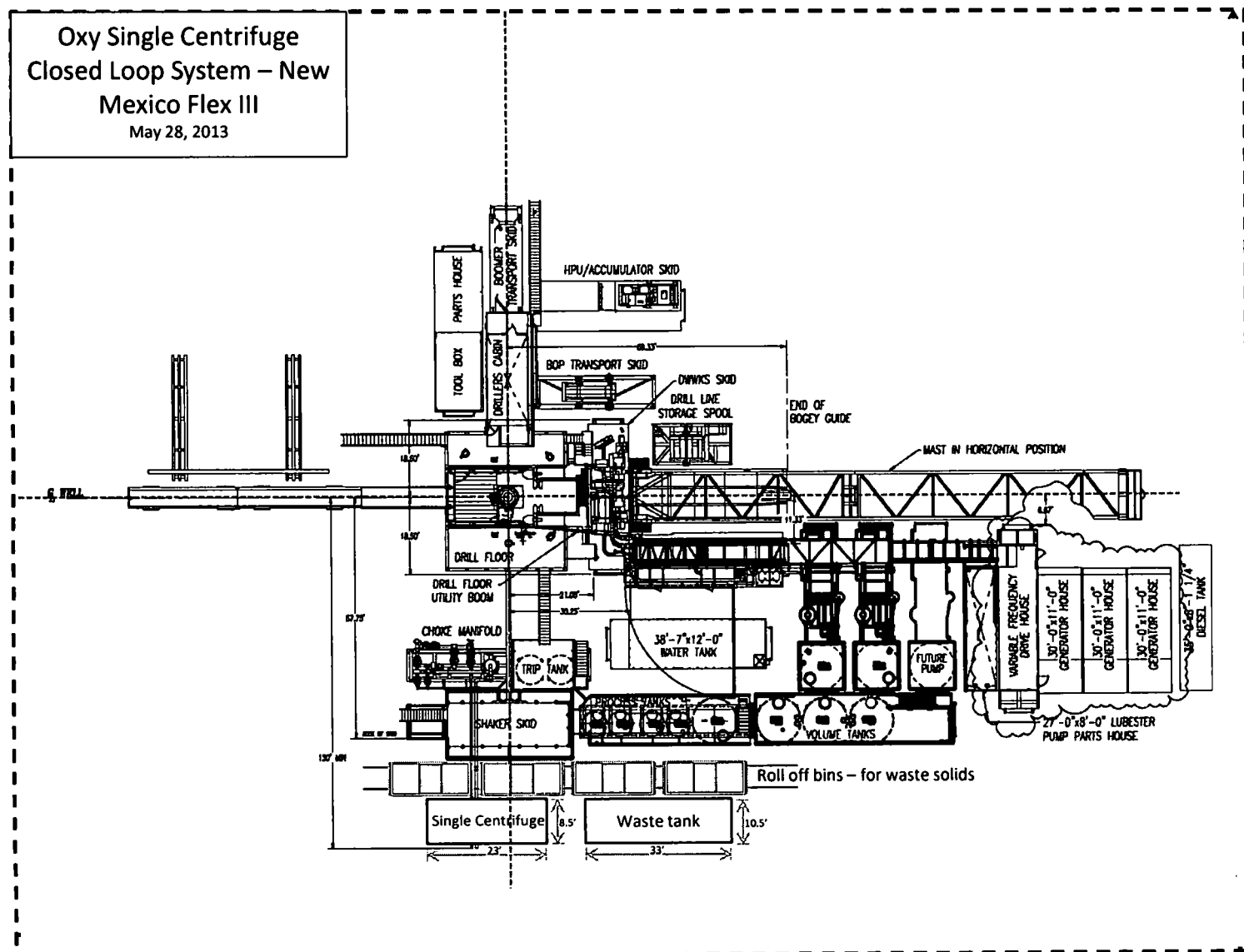
Asel Surveying

P.O. BOX 393 - 310 W. TAYLOR
HOBBS, NEW MEXICO - 575-393-9146

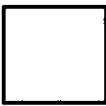
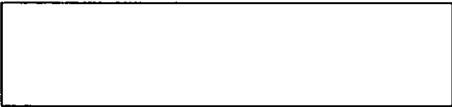
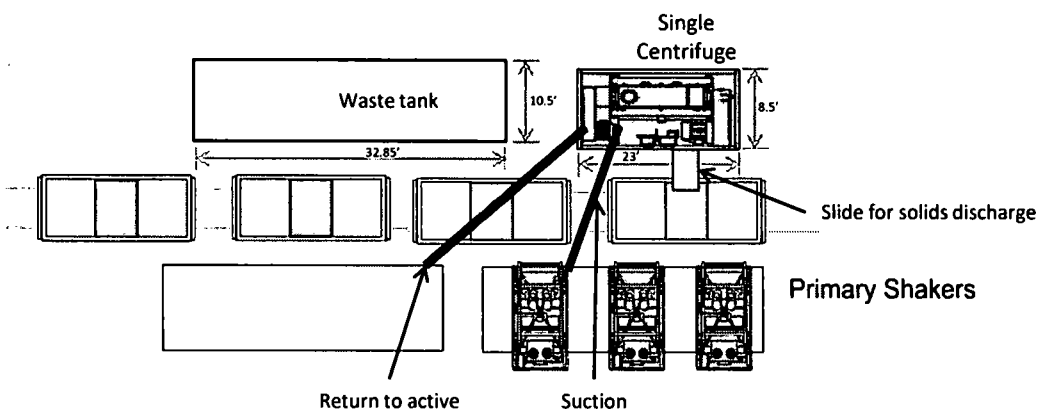


| | |
|-------------------------|---------------------------|
| Survey Date: 11/27/18 | Sheet 1 of 1 Sheets |
| W.O. Number: 181127WL-a | Drawn By: KA Rev: |
| Date: 12/26/18 | 181127WL-a Scale: 1"=200' |

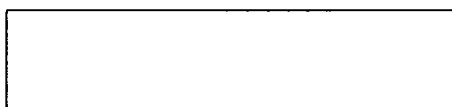
May 28, 2013



Oxy



Well Head



Oxy Single Centrifuge
Closed Loop System – New
Mexico Flex III
May 28, 2013

5M Choke Panel

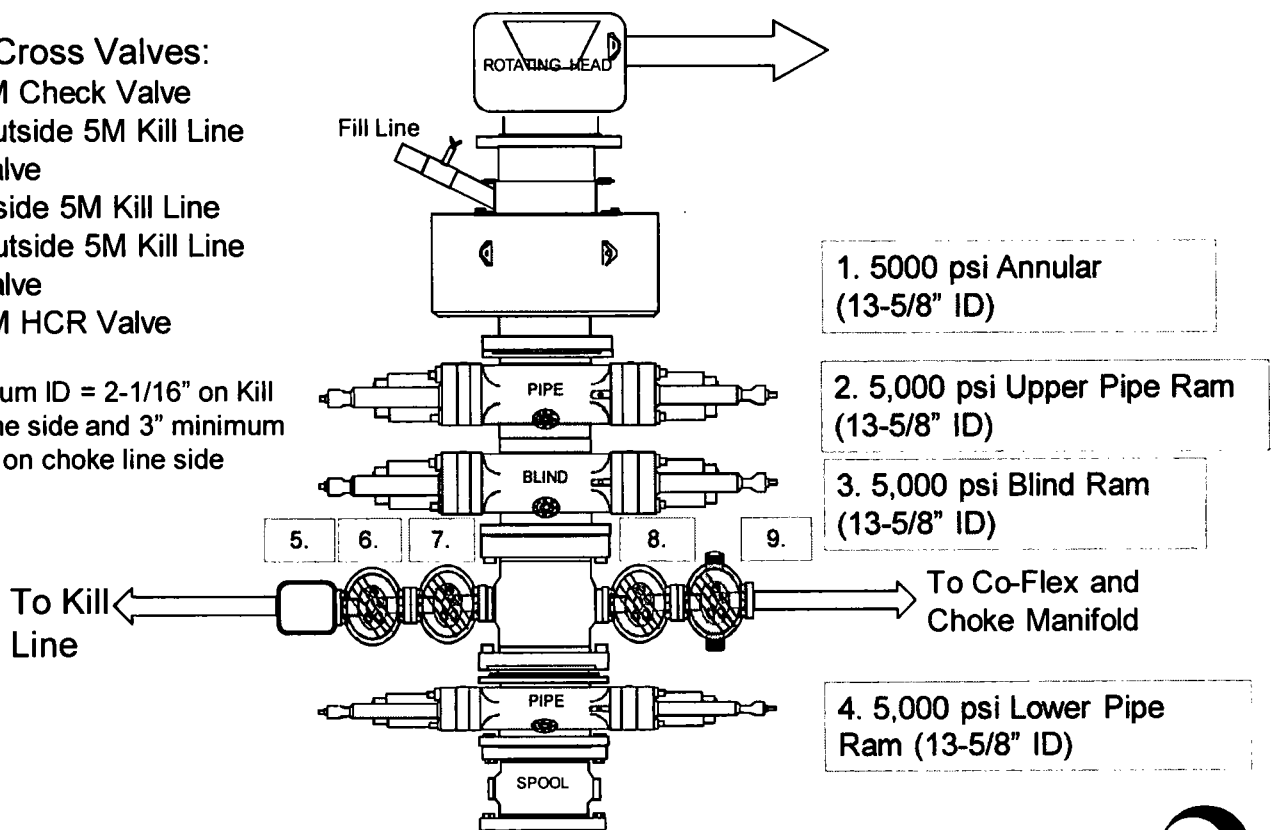


5M BOP Stack

Mud Cross Valves:

5. 5M Check Valve
6. Outside 5M Kill Line Valve
7. Inside 5M Kill Line Valve
8. Outside 5M Kill Line Valve
9. 5M HCR Valve

*Minimum ID = 2-1/16" on Kill Line side and 3" minimum ID on choke line side





Permian Drilling Hydrogen Sulfide Drilling Operations Plan Turkey Track 8-7 State 201H

Open drill site. No homes or buildings are near the proposed location.

1. Escape

Personnel shall escape upwind of wellbore in the event of an emergency gas release. Escape can take place through the lease road on the Southeast side of the location. Personnel need to move to a safe distance and block the entrance to location. If the primary route is not an option due to the wind direction, then a secondary egress route should be taken.



Permian Drilling Hydrogen Sulfide Drilling Operations Plan New Mexico

Scope

This contingency plan establishes guidelines for the public, all company employees, and contract employees who's work activities may involve exposure to hydrogen sulfide (H₂S) gas.

While drilling this well, it is possible to encounter H₂S bearing formations. At all times, the first barrier to control H₂S emissions will be the drilling fluid, which will have a density high enough to control influx.

Objective

1. Provide an immediate and predetermined response plan to any condition when H₂S is detected. All H₂S detections in excess of 10 parts per million (ppm) concentration are considered an Emergency.
2. Prevent any and all accidents, and prevent the uncontrolled release of hydrogen sulfide into the atmosphere.
3. Provide proper evacuation procedures to cope with emergencies.
4. Provide immediate and adequate medical attention should an injury occur.

Discussion

| | |
|--------------------------------|---|
| Implementation: | This plan with all details is to be fully implemented before drilling to <u>commence</u> . |
| Emergency response Procedure: | This section outlines the conditions and denotes steps to be taken in the event of an emergency. |
| Emergency equipment Procedure: | This section outlines the safety and emergency equipment that will be required for the drilling of this well. |
| Training provisions: | This section outlines the training provisions that must be adhered to prior to drilling. |
| Drilling emergency call lists: | Included are the telephone numbers of all persons to be contacted should an emergency exist. |
| Briefing: | This section deals with the briefing of all people involved in the drilling operation. |
| Public safety: | Public safety personnel will be made aware of any potential evacuation and any additional support needed. |
| Check lists: | Status check lists and procedural check lists have been included to insure adherence to the plan. |
| General information: | A general information section has been included to supply support information. |

Hydrogen Sulfide Training

All personnel, whether regularly assigned, contracted, or employed on an unscheduled basis, will receive training from a qualified instructor in the following areas prior to commencing drilling operations on the well:

1. The hazards and characteristics of H₂S.
2. Proper use and maintenance of personal protective equipment and life support systems.
3. H₂S detection.
4. Proper use of H₂S detectors, alarms, warning systems, briefing areas, evacuation procedures and prevailing winds.
5. Proper techniques for first aid and rescue procedures.
6. Physical effects of hydrogen sulfide on the human body.
7. Toxicity of hydrogen sulfide and sulfur dioxide.
8. Use of SCBA and supplied air equipment.
9. First aid and artificial respiration.
10. Emergency rescue.

In addition, supervisory personnel will be trained in the following areas:

1. The effects of H₂S on metal components. If high tensile strength tubular is to be used, personnel will be trained in their special maintenance requirements.
2. Corrective action and shut-in procedures when drilling a well, blowout prevention and well control procedures.
3. The contents and requirements of the H₂S Drilling Operations Plan.

H₂S training refresher must have been taken within one year prior to drilling the well. Specifics on the well to be drilled will be discussed during the pre-spud meeting. H₂S and well control (choke) drills will be performed while drilling the well, at least on a weekly basis. This plan shall be available in the well site. All personnel will be required to carry the documentation proving that the H₂S training has been taken.

Service company and visiting personnel

- A. Each service company that will be on this well will be notified if the zone contains H₂S.
- B. Each service company must provide for the training and equipment of their employees before they arrive at the well site.
- C. Each service company will be expected to attend a well site briefing

Emergency Equipment Requirements

1. Well control equipment

The well shall have hydraulic BOP equipment for the anticipated pressures. Equipment is to be tested on installation and follow Oxy Well Control standard, as well as BLM Onshore Order #2.

Special control equipment:

- A. Hydraulic BOP equipment with remote control on ground. Remotely operated choke.
- B. Rotating head
- C. Gas buster equipment shall be installed before drilling out of surface pipe.

2. Protective equipment for personnel

- A. Four (4) 30-minute positive pressure air packs (2 at each briefing area) on location.
- B. Adequate fire extinguishers shall be located at strategic locations.
- C. Radio / cell telephone communication will be available at the rig.
 - Rig floor and trailers.
 - Vehicle.

3. Hydrogen sulfide sensors and alarms

- A. H₂S sensor with alarms will be located on the rig floor, at the bell nipple, and at the flow line. These monitors will be set to alarm at 10 ppm with strobe light, and audible alarm.
- B. Hand operated detectors with tubes.
- C. H₂S monitor tester (to be provided by contract Safety Company.)
- D. There shall be one combustible gas detector on location at all times.

4. Visual Warning Systems

- A. One sign located at each location entrance with the following language:

**Caution – potential poison gas
Hydrogen sulfide
No admittance without authorization**

Wind sock – wind streamers:

- A. One 36" (in length) wind sock located at protection center, at height visible from rig floor.
- B. One 36" (in length) wind sock located at height visible from pit areas.

Condition flags

- A. One each condition flag to be displayed to denote conditions.

green – normal conditions
yellow – potential danger
red – danger, H2S present

- B. Condition flag shall be posted at each location sign entrance.

5. Mud Program

The mud program is designed to minimize the risk of having H2S and other formation fluids at surface. Proper mud weight and safe drilling practices will be applied. H2S scavengers will be used to minimize the hazards while drilling. Below is a summary of the drilling program.

Mud inspection devices:

Garrett gas train or hatch tester for inspection of sulfide concentration in mud system.

6. Metallurgy

- A. Drill string, casing, tubing, wellhead, blowout preventers, drilling spools or adapters, kill lines, choke manifold, lines and valves shall be suitable for the H2S service.
- B. All the elastomers, packing, seals and ring gaskets shall be suitable for H2S service.

7. Well Testing

No drill stem test will be performed on this well.

8. Evacuation plan

Evacuation routes should be established prior to well spud for each well and discussed with all rig personnel.

9. Designated area

- A. Parking and visitor area: all vehicles are to be parked at a predetermined safe distance from the wellhead.
- B. There will be a designated smoking area.
- C. Two briefing areas on either side of the location at the maximum allowable distance from the well bore so they offset prevailing winds perpendicularly, or at a 45-degree angle if wind direction tends to shift in the area.

Emergency procedures

- A. In the event of any evidence of H₂S level above 10 ppm, take the following steps:
 - 1. The Driller will pick up off bottom, shut down the pumps, slow down the pipe rotation.
 - 2. Secure and don escape breathing equipment, report to the upwind designated safe briefing / muster area.
 - 3. All personnel on location will be accounted for and emergency search should begin for any missing, the Buddy System will be implemented.
 - 4. Order non-essential personnel to leave the well site, order all essential personnel out of the danger zone and upwind to the nearest designated safe briefing / muster area.
 - 5. Entrance to the location will be secured to a higher level than our usual "Meet and Greet" requirement, and the proper condition flag will be displayed at the entrance to the location.
 - 6. Take steps to determine if the H₂S level can be corrected or suppressed and, if so, proceed as required.
- B. If uncontrollable conditions occur:
 - 1. Take steps to protect and/or remove any public in the down-wind area from the rig – partial evacuation and isolation. Notify necessary public safety personnel and appropriate regulatory entities (i.e. BLM) of the situation.

2. Remove all personnel to the nearest upwind designated safe briefing / muster area or off location.
3. Notify public safety personnel of safe briefing / muster area.
4. An assigned crew member will blockade the entrance to the location. No unauthorized personnel will be allowed entry to the location.
5. Proceed with best plan (at the time) to regain control of the well. Maintain tight security and safety procedures.

C. Responsibility:

1. Designated personnel.
 - a. Shall be responsible for the total implementation of this plan.
 - b. Shall be in complete command during any emergency.
 - c. Shall designate a back-up.

| | |
|---------------------|--|
| All personnel: | <ol style="list-style-type: none"> 1. On alarm, don escape unit and report to the nearest upwind designated safe briefing / muster area upw 2. Check status of personnel (buddy system). 3. Secure breathing equipment. 4. Await orders from supervisor. |
| Drill site manager: | <ol style="list-style-type: none"> 1. Don escape unit if necessary and report to nearest upwind designated safe briefing / muster area. 2. Coordinate preparations of individuals to return to point of release with tool pusher and driller (using the buddy system). 3. Determine H2S concentrations. 4. Assess situation and take control measures. |
| Tool pusher: | <ol style="list-style-type: none"> 1. Don escape unit Report to up nearest upwind designated safe briefing / muster area. 2. Coordinate preparation of individuals to return to point of release with tool pusher drill site manager (using the buddy system). 3. Determine H2S concentration. 4. Assess situation and take control measures. |
| Driller: | <ol style="list-style-type: none"> 1. Don escape unit, shut down pumps, continue |

- rotating DP.
 - 2. Check monitor for point of release.
 - 3. Report to nearest upwind designated safe briefing / muster area.
 - 4. Check status of personnel (in an attempt to rescue, use the buddy system).
 - 5. Assigns least essential person to notify Drill Site Manager and tool pusher by quickest means in case of their absence.
 - 6. Assumes the responsibilities of the Drill Site Manager and tool pusher until they arrive should they be absent.
- Derrick man
- Floor man #1
- Floor man #2
- Mud engineer:
- 1. Will remain in briefing / muster area until instructed by supervisor.
- Safety personnel:
- 1. Report to nearest upwind designated safe briefing / muster area.
 - 2. When instructed, begin check of mud for ph and H2S level. (Garett gas train.)
1. Mask up and check status of all personnel and secure operations as instructed by drill site manager.

Taking a kick

When taking a kick during an H2S emergency, all personnel will follow standard Well control procedures after reporting to briefing area and masking up.

Open-hole logging

All unnecessary personnel off floor. Drill Site Manager and safety personnel should monitor condition, advise status and determine need for use of air equipment.

Running casing or plugging

Following the same “tripping” procedure as above. Drill Site Manager and safety personnel should determine if all personnel have access to protective equipment.

Ignition procedures

The decision to ignite the well is the responsibility of the operator (Oxy Drilling Management). The decision should be made only as a last resort and in a situation where it is clear that:

1. Human life and property are endangered.
2. There is no hope controlling the blowout under the prevailing conditions at the well.

Instructions for igniting the well

1. Two people are required for the actual igniting operation. They must wear self-contained breathing units and have a safety rope attached. One man (tool pusher or safety engineer) will check the atmosphere for explosive gases with the gas monitor. The other man is responsible for igniting the well.
2. Primary method to ignite: 25 mm flare gun with range of approximately 500 feet.
3. Ignite upwind and do not approach any closer than is warranted.
4. Select the ignition site best for protection, and which offers an easy escape route.
5. Before firing, check for presence of combustible gas.
6. After lighting, continue emergency action and procedure as before.
7. All unassigned personnel will remain in briefing area until instructed by supervisor or directed by the Drill Site Manager.

Remember: After well is ignited, burning hydrogen sulfide will convert to sulfur dioxide, which is also highly toxic. **Do not assume the area is safe after the well is ignited.**

Status check list

Note: All items on this list must be completed before drilling to production casing point.

1. H2S sign at location entrance.
2. Two (2) wind socks located as required.
3. Four (4) 30-minute positive pressure air packs (2 at each Briefing area) on location for all rig personnel and mud loggers.
4. Air packs inspected and ready for use.
5. Cascade system and hose line hook-up as needed.
6. Cascade system for refilling air bottles as needed.
7. Condition flag on location and ready for use.
8. H2S detection system hooked up and tested.
9. H2S alarm system hooked up and tested.
10. Hand operated H2S detector with tubes on location.
11. 1 – 100' length of nylon rope on location.
12. All rig crew and supervisors trained as required.
13. All outside service contractors advised of potential H2S hazard on well.
14. No smoking sign posted and a designated smoking area identified.
15. Calibration of all H2S equipment shall be noted on the IADC report.

Checked by: _____ Date: _____

Procedural check list during H2S events

Perform each tour:

1. Check fire extinguishers to see that they have the proper charge.
2. Check breathing equipment to ensure that it in proper working order.
3. Make sure all the H2S detection system is operative.

Perform each week:

1. Check each piece of breathing equipment to make sure that demand or forced air regulator is working. This requires that the bottle be opened and the mask assembly be put on tight enough so that when you inhale, you receive air or feel air flow.
2. BOP skills (well control drills).
3. Check supply pressure on BOP accumulator stand by source.
4. Check breathing equipment mask assembly to see that straps are loosened and turned back, ready to put on.
5. Check pressure on breathing equipment air bottles to make sure they are charged to full volume. (Air quality checked for proper air grade "D" before bringing to location)
6. Confirm pressure on all supply air bottles.
7. Perform breathing equipment drills with on-site personnel.
8. Check the following supplies for availability.
 - A. Emergency telephone list.
 - B. Hand operated H2S detectors and tubes.

General evacuation plan

1. When the company approved supervisor (Drill Site Manager, consultant, rig pusher, or driller) determines the H₂S gas cannot be limited to the well location and the public will be involved, he will activate the evacuation plan.
2. Drill Site Manager or designee will notify local government agency that a hazardous condition exists and evacuation needs to be implemented.
3. Company or contractor safety personnel that have been trained in the use of H₂S detection equipment and self-contained breathing equipment will monitor H₂S concentrations, wind directions, and area of exposure. They will delineate the outer perimeter of the hazardous gas area. Extension to the evacuation area will be determined from information gathered.
4. Law enforcement personnel (state police, police dept., fire dept., and sheriff's dept.) Will be called to aid in setting up and maintaining road blocks. Also, they will aid in evacuation of the public if necessary.
5. After the discharge of gas has been controlled, company safety personnel will determine when the area is safe for re-entry.

Important: Law enforcement personnel will not be asked to come into a contaminated area. Their assistance will be limited to uncontaminated areas. Constant radio contact will be maintained with them.

Emergency actions

Well blowout – if emergency

1. Evacuate all personnel to “Safe Briefing / Muster Areas” or off location if needed.
2. If sour gas – evacuate rig personnel.
3. If sour gas – evacuate public within 3000 ft radius of exposure.
4. Don SCBA and shut well in if possible using the buddy system.
5. Notify Drilling Superintendent and call 911 for emergency help (fire dept and ambulance) if needed.
6. Implement the Blowout Contingency Plan, and Drilling Emergency Action Plan.
6. Give first aid as needed.

Person down location/facility

1. If immediately possible, contact 911. Give location and wait for confirmation.
2. Don SCBA and perform rescue operation using buddy system.

Toxic effects of hydrogen sulfide

Hydrogen sulfide is extremely toxic. The acceptable ceiling concentration for eight-hour exposure is 10 ppm, which is .001% by volume. Hydrogen sulfide is heavier than air (specific gravity – 1.192) and colorless. It forms an explosive mixture with air between 4.3 and 46.0 percent by volume. Hydrogen sulfide is almost as toxic as hydrogen cyanide and is between five and six times more toxic than carbon monoxide. Toxicity data for hydrogen sulfide and various other gases are compared in table i. Physical effects at various hydrogen sulfide exposure levels are shown in table ii.

Table i
Toxicity of various gases

| Common name | Chemical formula | Specific gravity (sc=1) | Threshold limit (1) | Hazardous limit (2) | Lethal concentration (3) |
|------------------|------------------|-------------------------|---------------------|-----------------------------|--------------------------|
| Hydrogen Cyanide | Hcn | 0.94 | 10 ppm | 150 ppm/hr | 300 ppm |
| Hydrogen Sulfide | H2S | 1.18 | 10 ppm | 250 ppm/hr | 600 ppm |
| Sulfur Dioxide | So2 | 2.21 | 5 ppm | - | 1000 ppm |
| Chlorine | Cl2 | 2.45 | 1 ppm | 4 ppm/hr | 1000 ppm |
| Carbon Monoxide | Co | 0.97 | 50 ppm | 400 ppm/hr | 1000 ppm |
| Carbon Dioxide | Co2 | 1.52 | 5000 ppm | 5% | 10% |
| Methane | Ch4 | 0.55 | 90,000 ppm | Combustible above 5% in air | |

- 1) threshold limit – concentration at which it is believed that all workers may be repeatedly exposed day after day without adverse effects.
- 2) hazardous limit – concentration that will cause death with short-term exposure.
- 3) lethal concentration – concentration that will cause death with short-term exposure.

Toxic effects of hydrogen sulfide

Table ii
Physical effects of hydrogen sulfide

| <u>Percent (%)</u> | <u>Ppm</u> | <u>Concentration</u> Grains <u>100 std. Ft3*</u> | <u>Physical effects</u> |
|--------------------|------------|--|------------------------------|
| 0.001 | <10 | 00.65 | Obvious and unpleasant odor. |