

District I
1625 N. French Dr., Hobbs, NM 88240
Phone: (575) 393-6161 Fax: (575) 393-0720
District II
811 S. First St., Artesia, NM 88210
Phone: (575) 748-1283 Fax: (575) 748-9720
District III
1000 Rio Brazos Road, Aztec, NM 87410
Phone: (505) 334-6178 Fax: (505) 334-6170
District IV
1220 S. St. Francis Dr., Santa Fe, NM 87505
Phone: (505) 476-3460 Fax: (505) 476-3462

State of New Mexico
Energy Minerals and Natural Resources

Form C-101
Revised July 18, 2013

Oil Conservation Division **NM OIL CONSERVATION** AMENDED REPORT
1220 South St. Francis Dr. **ARTESIA DISTRICT**
Santa Fe, NM 87505 **FEB 06 2019**

APPLICATION FOR PERMIT TO DRILL, RE-ENTER, DEEPEN, PLUGBACK, OR ADD A ZONE

1 Operator Name and Address BTA OIL PRODUCERS, LLC		260297
		3 API Number 30-015-38999
4 Property Code 305316	5 Property Name 8808 JV-P PARDUE C	6 Well No. 5

7. Surface Location

UL - Lot	Section	Township	Range	Lot Idn	Feet from	N/S Line	Feet From	E/W Line	County
L	11	23S	28E		1520	S	330	W	EDDY

8. Proposed Bottom Hole Location

UL - Lot	Section	Township	Range	Lot Idn	Feet from	N/S Line	Feet From	E/W Line	County
M	11	23S	28E		1,141.5	S	365	W	EDDY

9. Pool Information

Pool Name <i>Loving Cherry Canyon</i>	Pool Code <i>40300</i>
--	---------------------------

Additional Well Information

11 Work Type RE-COMplete	12 Well Type OIL	13 Cable/Rotary	14 Lease Type PRIVATE	15 Ground Level Elevation 2989
16 Multiple N	17 Proposed Depth 4150	18 Formation DELAWARE (CHERRY CANYON)	19 Contractor	20 Spud Date
Depth to Ground water		Distance from nearest fresh water well		Distance to nearest surface water

☐ We will be using a closed-loop system in lieu of lined pits

21. Proposed Casing and Cement Program

Type	Hole Size	Casing Size	Casing Weight/ft	Setting Depth	Sacks of Cement	Estimated TOC
SURF	17.5	13.375	54.5	476	615	0
INT	11	8.625	32	2549	738	0
PROD	7.875	5.5	17	4150	1000	0

Casing/Cement Program: Additional Comments

--

22. Proposed Blowout Prevention Program

Type	Working Pressure	Test Pressure	Manufacturer
DOUBLE RAM	3000	1000	

23. I hereby certify that the information given above is true and complete to the best of my knowledge and belief. I further certify that I have complied with 19.15.14.9 (A) NMAC <input type="checkbox"/> and/or 19.15.14.9 (B) NMAC <input type="checkbox"/> , if applicable. Signature: <i>Katy Reddell</i> Printed name: KATY REDDELL Title: REGULATORY ANALYST E-mail Address: kreddell@btaoil.com Date: 1/31/2019		OIL CONSERVATION DIVISION Approved By: <i>Raymond W. Dodang</i> Title: <i>Geologist</i> Approved Date: <i>2-6-19</i> Expiration Date: <i>2-6-21</i> Conditions of Approval Attached	
Phone: 432-682-3753			

**NM OIL CONSERVATION
ARTESIA DISTRICT**

FEB 06 2019

Form C-102

Revised August 1, 2011

RECEIVED

Submit one copy to appropriate District Office

AMENDED REPORT

DISTRICT I
1625 N. French Dr., Hobbs, NM 88240
Phone: (575) 393-6161 Fax: (575) 393-0720
DISTRICT II
811 S. First St., Artesia, NM 88210
Phone: (575) 748-1283 Fax: (575) 748-9720
DISTRICT III
1000 Rio Brazos Road, Aztec, NM 87410
Phone: (505) 334-6178 Fax: (505) 334-6170
DISTRICT IV
1220 S. St. Francis Dr., Santa Fe, NM 87505
Phone: (505) 476-3460 Fax: (505) 476-3462

State of New Mexico
Energy, Minerals & Natural Resources Department
OIL CONSERVATION DIVISION
1220 South St. Francis Dr.
Santa Fe, New Mexico 87505

WELL LOCATION AND ACREAGE DEDICATION PLAT

API Number 30-015-38999	Pool Code 40300	Pool Name Loving Cherry Canyon
Property Code 305316	Property Name 8808 JV-P PARDUE C	Well Number 5
OGRID No. 260297	Operator Name BTA OIL PRODUCERS	Elevation 2989'

Surface Location									
UL or lot No.	Section	Township	Range	Lot Idn	Feet from the	North/South line	Feet from the	East/West line	County
L	11	23-S	28-E		1520	SOUTH	330	WEST	EDDY

Bottom Hole Location If Different From Surface									
UL or lot No.	Section	Township	Range	Lot Idn	Feet from the	North/South line	Feet from the	East/West line	County
M	11	23-S	28-E		1141.5	SOUTH	365	WEST	EDDY
Dedicated Acres 40	Joint or Infill	Consolidation Code	Order No.						

NO ALLOWABLE WILL BE ASSIGNED TO THIS COMPLETION UNTIL ALL INTERESTS HAVE BEEN CONSOLIDATED OR A NON-STANDARD UNIT HAS BEEN APPROVED BY THE DIVISION

<p>CORNER COORDINATES TABLE NAD 27 NME A - Y= 480202.7 N, X= 582509.2 E B - Y= 480211.1 N, X= 583846.3 E C - Y= 477574.8 N, X= 583865.1 E D - Y= 477563.8 N, X= 582541.7 E</p>				<p>OPERATOR CERTIFICATION I hereby certify that the information herein is true and complete to the best of my knowledge and belief, and that this organization either owns a working interest or unleased mineral interest in the land including the proposed bottom hole location or has a right to drill this well at this location pursuant to a contract with an owner of such mineral or working interest, or to a voluntary pooling agreement or a compulsory pooling order heretofore entered by the division.</p> <p>Kerry Reddell 2/5/19 Signature Date Kerry Reddell Printed Name Kredell@btaoil.com E-mail Address</p>			
<p>CORNER COORDINATES TABLE NAD 83 NME A - Y= 480262.1 N, X= 623691.8 E B - Y= 480270.6 N, X= 625028.9 E C - Y= 477634.2 N, X= 625047.8 E D - Y= 477623.2 N, X= 623724.4 E</p>				<p>SURVEYOR CERTIFICATION I hereby certify that the well location shown on this plat was plotted from field notes of surveys made by me or under my supervision, and the same is true and correct to the best of my belief.</p> <p>DATE OF SURVEY 3239 Signature & Seal of Professional Surveyor: REGISTERED PROFESSIONAL SURVEYOR Ronald J. Eidson 02/04/2019 Certificate Number Gary G. Eidson 12641 Ronald J. Eidson 3239 LSL Rel W.O.: 12.11.0021 JWSC W.O.: 19.13 0096</p>			
<p>GEODETIC COORDINATES NAD 83 NME SURFACE LOCATION Y= 479145.5 N X= 624035.6 E LAT.=32.316980° N LONG.=104.065630° W</p>				<p>GEODETIC COORDINATES NAD 27 NME SURFACE LOCATION Y= 479086.1 N X= 582853.0 E LAT.=32.316839° N LONG.=104.065135° W</p>			
<p>BOTTOM HOLE LOCATION NAD 83 NME Y= 478767.4 N X= 624075.2 E LAT.=32.315920° N LONG.=104.065505° W</p>				<p>BOTTOM HOLE LOCATION NAD 27 NME Y= 478708.0 N X= 582892.6 E LAT.=32.315799° N LONG.=104.065010° W</p>			

RWP 2-6-19

RECEIVED:	REVIEWER:	TYPE:	APP NO:
-----------	-----------	-------	---------

ABOVE THIS TABLE FOR OCD DIVISION USE ONLY

NEW MEXICO OIL CONSERVATION DIVISION
 - Geological & Engineering Bureau -
 1220 South St. Francis Drive, Santa Fe, NM 87505

**ADMINISTRATIVE APPLICATION CHECKLIST**

THIS CHECKLIST IS MANDATORY FOR ALL ADMINISTRATIVE APPLICATIONS FOR EXCEPTIONS TO DIVISION RULES AND
 REGULATIONS WHICH REQUIRE PROCESSING AT THE DIVISION LEVEL IN SANTA FE

Applicant: BTA OIL PRODUCERS, LLC **OGRID Number:** 260297
Well Name: 8808 JV-P PARDUE C #5 **API:** 30-015-38999
Pool: _____ **Pool Code:** _____

**SUBMIT ACCURATE AND COMPLETE INFORMATION REQUIRED TO PROCESS THE TYPE OF APPLICATION
 INDICATED BELOW**

1) TYPE OF APPLICATION: Check those which apply for [A]

A. Location - Spacing Unit - Simultaneous Dedication

☒ NSL ☐ NSP (PROJECT AREA) ☐ NSP (PRORATION UNIT) ☐ SD

B. Check one only for [I] or [II]

[I] Commingling - Storage - Measurement

☐ DHC ☐ CTB ☐ PLC ☐ PC ☐ OLS ☐ OLM

[II] Injection - Disposal - Pressure Increase - Enhanced Oil Recovery

☐ WFX ☐ PMX ☐ SWD ☐ IPI ☐ EOR ☐ PPR
2) NOTIFICATION REQUIRED TO: Check those which apply.

- A. ☒ Offset operators or lease holders
 B. ☐ Royalty, overriding royalty owners, revenue owners
 C. ☐ Application requires published notice
 D. ☐ Notification and/or concurrent approval by SLO
 E. ☐ Notification and/or concurrent approval by BLM
 F. ☐ Surface owner
 G. ☐ For all of the above, proof of notification or publication is attached, and/or,
 H. ☒ No notice required

FOR OCD ONLY

- ☐ Notice Complete
☐ Application
 Content
 Complete

3) CERTIFICATION: I hereby certify that the information submitted with this application for administrative approval is **accurate** and **complete** to the best of my knowledge. I also understand that **no action** will be taken on this application until the required information and notifications are submitted to the Division.

Note: Statement must be completed by an individual with managerial and/or supervisory capacity.

1/31/2019**KATY REDDELL**

Print or Type Name

Katy Reddell

 Signature

Date

432-682-3753

Phone Number

KREDDELL@BTAOIL.COM

e-mail Address

FEB 06 2019

RECEIVED



BTA OIL PRODUCERS, LLC
104 SOUTH PECOS STREET
MIDLAND, TEXAS 79701-5021
432-682-3753

Oil Conservation Division
New Mexico Department of Energy
Minerals and Natural Resources
1220 South Saint Francis Drive
Santa Fe, New Mexico 87505

Re: Application of BTA Oil Producers, LLC for administrative approval of an unorthodox well location for its 8808 JV-P Pardue C #5 well in the SW/SW/4 of Section 11, T23S; R28E, N.M.P.M., Eddy County, New Mexico.

To whom it may concern,

BTA Oil Producers, LLC (OGRID No. 260297) seeks administrative approval of an unorthodox well location for its 8808 JV-P Pardue C #5 well (API No. 30-015-38999) in the SW/SW/4 of Section 11, T23S; R28E, N.M.P.M., Eddy County, New Mexico. To be completed in the Delaware (Cherry Canyon). This horizontal well was completed in the Bone Spring where it was an orthodox location. BTA Oil Producers, LLC seeks approval to go back to Delaware (Cherry Canyon) at a depth of 4,150'. The upper most perf will be located 4,100', and the lower most perf will be located 4,120' thus making it too close to the northern lease line. Since this acreage is governed by the division's statewide rules, the completed interval now will be unorthodox because it is closer than the standard offsets to the northern boundary of the spacing unit.

Exhibit A: Well Location and Acreage Dedication Plat (form C-102).

Exhibit B: A land plat for Section 11, T23S; R28E showing BTA Oil Producers, LLC as 100% owner of both 40 Acre tracts. Therefore there is not a need to notify anyone as BTA Oil Producers, LLC's ownership is 100%.

Exhibit C: Permit to drill application C-101 for the re-completion.

Exhibit D: Administrative Application Checklist.

Respectfully,



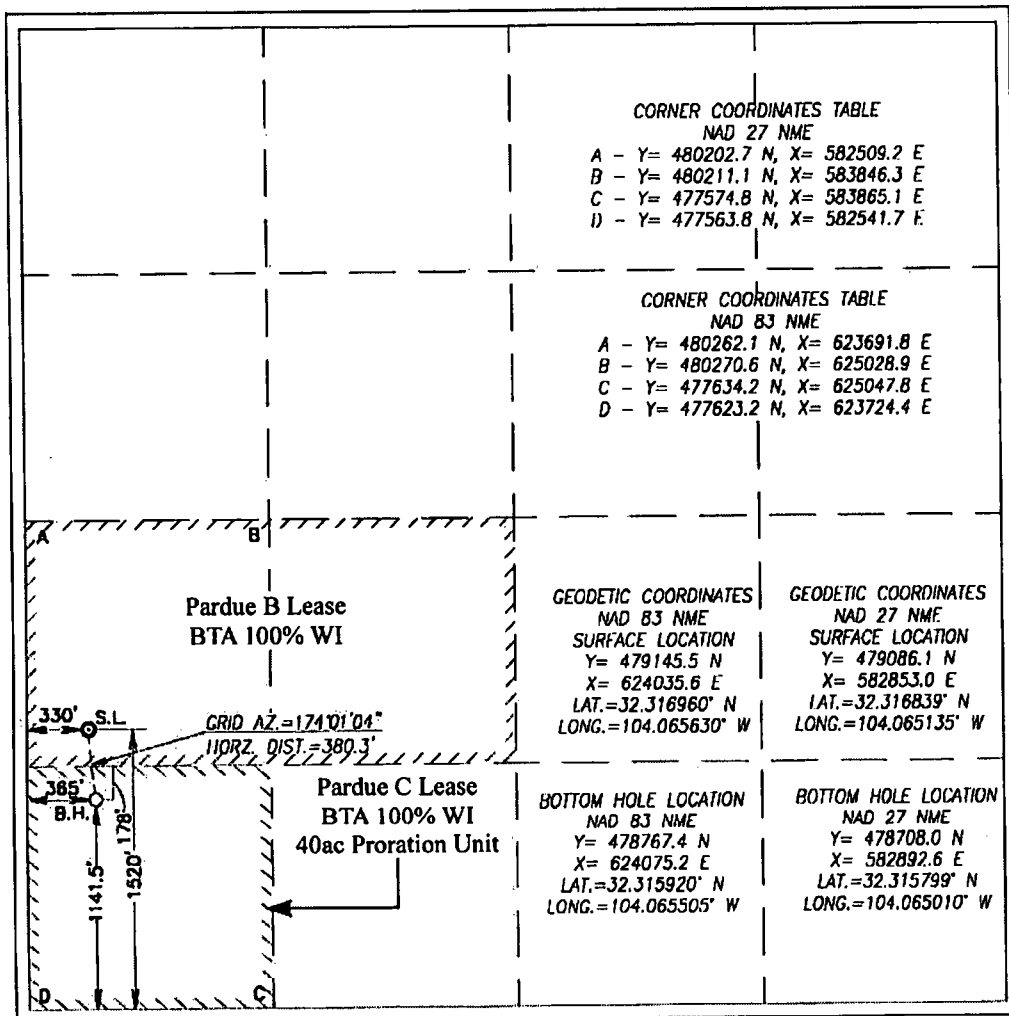
Katy Reddell
BTA Oil Producers, LLC



BTA Oil Producers, LLC

EXHIBIT - 1 NON-STANDARD LOCATION PLAT 8808 JV-P Pardue 'C' #5

SHL: 1520'FSL & 330'FWL
Top Proposed Interval: 1141.5'FSL & 365'FWL
Cherry Canyon Completion
Sec. 11, T23S-R28E
API: 30-015-3899
Eddy County, New Mexico



I hereby state that this map is an accurate representation
and that it is true and correct to the best of my knowledge.

Jose Baltier

02/05/2019

Jose Baltier, BTA Oil Producers, LLC