

RECEIVED

District I
1625 N. French Dr., Hobbs, NM 88240
Phone: (505) 393-6161 Fax: (505) 393-0720
District II
811 S. First St., Artesia, NM 88210
Phone: (505) 748-1283 Fax: (505) 748-9720
District III
1000 Rio Brazos Road, Aztec, NM 87410
Phone: (505) 334-6178 Fax: (505) 334-6170
District IV
1220 S. St. Francis Dr., Santa Fe, NM 87505
Phone: (505) 476-3460 Fax: (505) 476-3462

State of New Mexico
Energy, Minerals & Natural Resources Department
OIL CONSERVATION DIVISION
1220 South St. Francis Dr.
Santa Fe, NM 87505

FEB 12 2019

Form C-102
Revised August 1, 2011
Submit one copy to appropriate District Office

☐ AMENDED REPORT

WELL LOCATION AND ACREAGE DEDICATION PLAT

¹ API Number 30-015- 45723	² Pool Code 98220	³ Pool Name Purple Sage Wildcat Wolfcamp
⁴ Property Code 321000	⁵ Property Name SCOTER 6-31 FEDERAL COM	
⁶ OGRID No. 215099	⁷ Operator Name CIMAREX ENERGY CO.	⁸ Well Number 29H
		⁹ Elevation 3311.7'

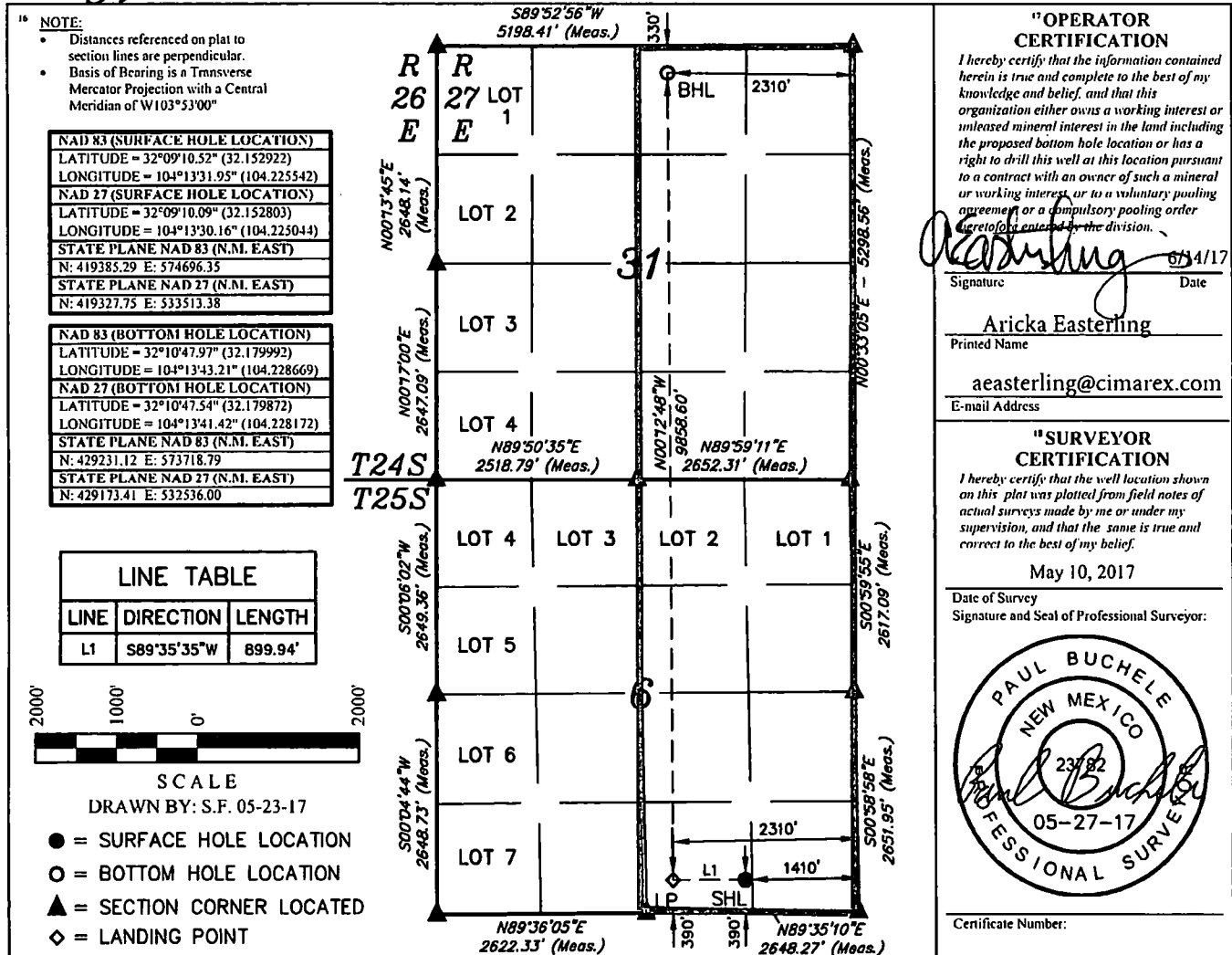
"Surface Location

UL or lot no.	Section	Township	Range	Lot Idn	Feet from the	North/South line	Feet from the	East/West line	County
O	6	25S	27E		390	SOUTH	1410	EAST	EDDY

"Bottom Hole Location If Different From Surface

UL or lot no.	Section	Township	Range	Lot Idn	Feet from the	North/South line	Feet from the	East/West line	County
B	31	24S	27E		330	NORTH	2310	EAST	EDDY
¹¹ Dedicated Acres 319.35	¹² Joint or Infill	¹³ Consolidation Code	¹⁴ Order No.						

No allowables will be assigned to this completion until all interests have been consolidated or a non-standard unit has been approved by the division.



RW 2-14-19

Operator Name: CIMAREX ENERGY COMPANY

Well Name: SCOTER 6-31 FEDERAL COM

Well Number: 29H

	NS-Foot	NS Indicator	EW-Foot	EW Indicator	Twsp	Range	Section	Aliquot/Lot/Tract	Latitude	Longitude	County	State	Meridian	Lease Type	Lease Number	Elevation	MD	TVD
EXIT Leg #1	330	FWL	231 0	FEL	24S	27E	31	Aliquot NWNE 2	32.17999 2	- 104.2286 69	EDD Y	NEW MEXI CO	NEW MEXI CO	F	NMNM 096208	- 554 7	186 87	885 8
BHL Leg #1	330	FWL	231 0	FEL	24S	27E	31	Aliquot NWNE 2	32.17999 2	- 104.2286 69	EDD Y	NEW MEXI CO	NEW MEXI CO	F	NMNM 096208	- 554 7	186 87	885 8