

See COA at bottom of page

**District I**

1625 N. French Dr., Hobbs, NM 88240  
Phone: (575) 393-6161 Fax: (575) 393-0720

**District II**

811 S. First St., Artesia, NM 88210  
Phone: (575) 748-1283 Fax: (575) 748-9720

**District III**

1000 Rio Brazos Road, Aztec, NM 87410  
Phone: (505) 334-6178 Fax: (505) 334-6170

**District IV**

1220 S. St. Francis Dr., Santa Fe, NM 87505  
Phone: (505) 476-3460 Fax: (505) 476-3462

State of New Mexico

RECEIVED

Form C-101

Revised July 18, 2013

Energy Minerals and Natural Resources

☐ AMENDED REPORT

Oil Conservation Division

FEB 18 2019

1220 South St. Francis Dr. DISTRICT II-ARTESIA O.C.D.

Santa Fe, NM 87505

**APPLICATION FOR PERMIT TO DRILL, RE-ENTER, DEEPEN, PLUGBACK, OR ADD A ZONE**

<sup>1</sup> Operator Name and Address V-F Petroleum Inc. P. O. Box 1889 Midland, TX 79702		<sup>2</sup> OGRID Number 24010	
<sup>4</sup> Property Code 324997		<sup>3</sup> API Number 30-015- 45743	
<sup>5</sup> Property Name Northcott 24 SWD		<sup>6</sup> Well No. 1	

**7. Surface Location**

UL - Lot	Section	Township	Range	Lot Idn	Feet from	N/S Line	Feet From	E/W Line	County
G	24	19S	28E		2090	N	2090	E	Eddy

**8. Proposed Bottom Hole Location**

UL - Lot	Section	Township	Range	Lot Idn	Feet from	N/S Line	Feet From	E/W Line	County

**9. Pool Information**

Pool Name SWD; Devonian	Pool Code 96101
----------------------------	--------------------

**Additional Well Information**

<sup>11</sup> Work Type N	<sup>12</sup> Well Type S	<sup>13</sup> Cable/Rotary R	<sup>14</sup> Lease Type S	<sup>15</sup> Ground Level Elevation 3362
<sup>16</sup> Multiple N	<sup>17</sup> Proposed Depth 14000	<sup>18</sup> Formation Devonian	<sup>19</sup> Contractor	<sup>20</sup> Spud Date
Depth to Ground water		Distance from nearest fresh water well		Distance to nearest surface water

☒ We will be using a closed-loop system in lieu of lined pits

**21. Proposed Casing and Cement Program**

Type	Hole Size	Casing Size	Casing Weight/ft	Setting Depth	Sacks of Cement	Estimated TOC
Surface	26	20	94	400	1000	Surface
Intermediate	17 1/2	13 3/8	61 & 68	2800	1900	Surface
Production	12 1/4	9 5/8	47 & 53.5	12060	2400	Surface

**Casing/Cement Program: Additional Comments**

8 3/4" Open Hole Drilled to 14,000'

**22. Proposed Blowout Prevention Program**

Type	Working Pressure	Test Pressure	Manufacturer
Ram	5000#	8000#	Schaffer/Hydril

<sup>23</sup> I hereby certify that the information given above is true and complete to the best of my knowledge and belief.

I further certify that I have complied with 19.15.14.9 (A) NMAC and/or 19.15.14.9 (B) NMAC, if applicable.

Signature:

*Eric Sprinkle*

Printed name: Eric Sprinkle

Title: Petroleum Engineer

E-mail Address: eric@vfpetroleum.com

Date: 2/14/2019 Phone: 432-683-3344

**OIL CONSERVATION DIVISION**

Approved By:

*Raymond H. Rodary*

Title: Geologist.

Approved Date: 2-18-19 Expiration Date: 2-18-21

Conditions of Approval Attached APPROVED C-108

Well cannot be spud until C-108 is approved

RECEIVED

**DISTRICT I**  
1625 N. French Dr., Hobbs, NM 88240  
Phone: (575) 393-6161 Fax: (575) 393-0720

**DISTRICT II**  
811 S. First St., Artesia, NM 88210  
Phone: (575) 748-1283 Fax: (575) 748-9720

**DISTRICT III**  
1000 Rio Brazos Road, Aztec, NM 87410  
Phone: (505) 334-6178 Fax: (505) 334-6170

**DISTRICT IV**  
1220 S. St. Francis Dr., Santa Fe, NM 87505  
Phone: (505) 476-3460 Fax: (505) 476-3462

State of New Mexico  
Energy, Minerals & Natural Resources Department  
**OIL CONSERVATION DIVISION**  
1220 South St. Francis Dr. DISTRICT II-ARTESIA O.C.D.  
Santa Fe, New Mexico 87505

Form C-102

Revised August 1, 2011

Submit one copy to appropriate

District Office

□ AMENDED REPORT

## WELL LOCATION AND ACREAGE DEDICATION PLAT

API Number <b>30-015-45743</b>	Pool Code <b>96101</b>	Pool Name <b>SWD; Devonian</b>
Property Code <b>324 997</b>	Property Name <b>NORTHCOTT 24 SWD</b>	Well Number <b>1</b>
OGRID No <b>24010</b>	Operator Name <b>V-F Petroleum Inc.</b>	Elevation <b>3362'</b>

## Surface Location

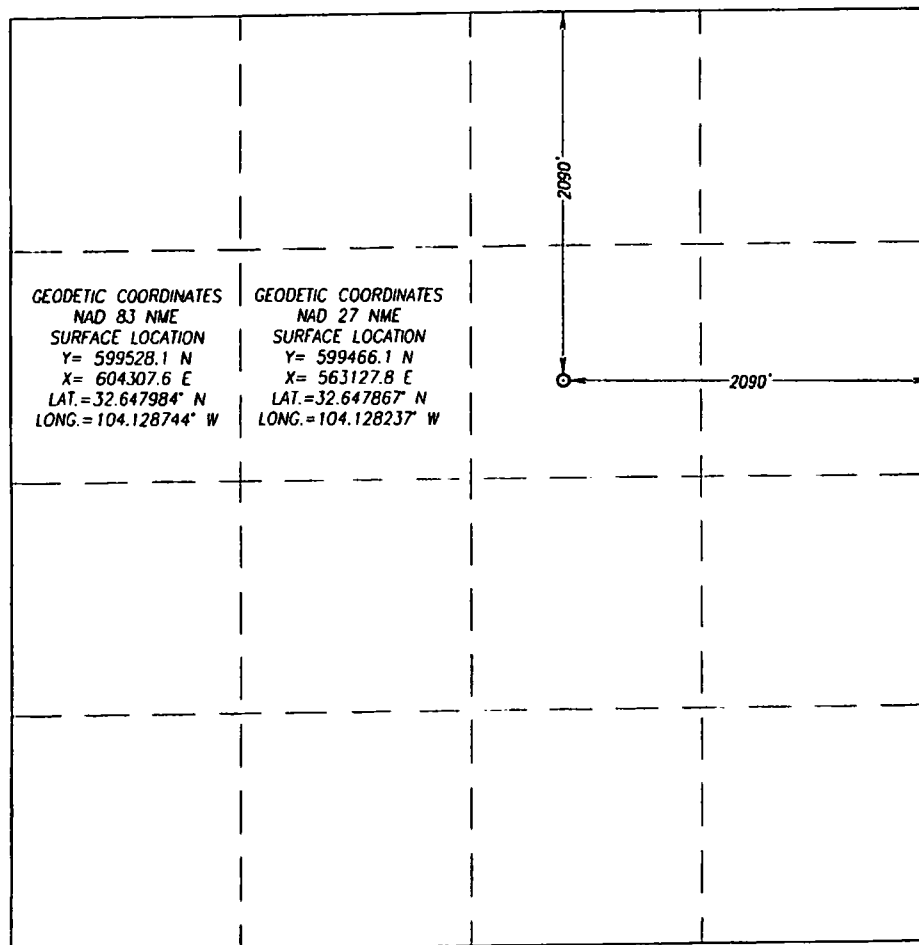
UL or lot No.	Section	Township	Range	Lot Idn	Feet from the	North/South line	Feet from the	East/West line	County
G	24	19-S	28-E		2090	NORTH	2090	EAST	EDDY

## Bottom Hole Location If Different From Surface

UL or lot No.	Section	Township	Range	Lot Idn	Feet from the	North/South line	Feet from the	East/West line	County

Dedicated Acres	Joint or Infill	Consolidation Code	Order No.

NO ALLOWABLE WILL BE ASSIGNED TO THIS COMPLETION UNTIL ALL INTERESTS HAVE BEEN CONSOLIDATED OR A NON-STANDARD UNIT HAS BEEN APPROVED BY THE DIVISION



## OPERATOR CERTIFICATION

I hereby certify that the information herein is true and complete to the best of my knowledge and belief, and that this organization either owns a working interest or unleased mineral interest in the land including the proposed bottom hole location or has a right to drill this well at this location pursuant to a contract with an owner of such mineral or working interest, or to a voluntary pooling agreement or a compulsory pooling order heretofore entered by the division

*Eric Sprinkle* 2/14/2019  
Signature Date

Printed Name  
**eric@vfpetroleum.com**  
E-mail Address

## SURVEYOR CERTIFICATION

I hereby certify that the well location shown on this plat was plotted from field notes of actual surveys made by me or under my supervision, and that the same is true and correct to the best of my belief.

*Ronald J. Eidson* 02/14/2019  
Date of Survey Signature of Professional Surveyor

Certificate Number  
Gary G. Eidson 12641  
Ronald J. Eidson 3239  
LSL JWSC W.O.: 1911 0087

RVP 2-18-19