

District I
1625 N. French Dr., Hobbs, NM 88240
Phone: (575) 393-6161 Fax: (575) 393-0720
District II
811 S. First St., Artesia, NM 88210
Phone: (575) 748-1283 Fax: (575) 748-9720
District III
1000 Rio Brazos Road, Aztec, NM 87410
Phone: (505) 334-6178 Fax: (505) 334-6170
District IV
1220 S. St. Francis Dr., Santa Fe, NM 87505
Phone: (505) 476-3460 Fax: (505) 476-3462

State of New Mexico
Energy, Minerals & Natural Resources Department
OIL CONSERVATION DIVISION
1220 South St. Francis Dr.
Santa Fe, NM 87505

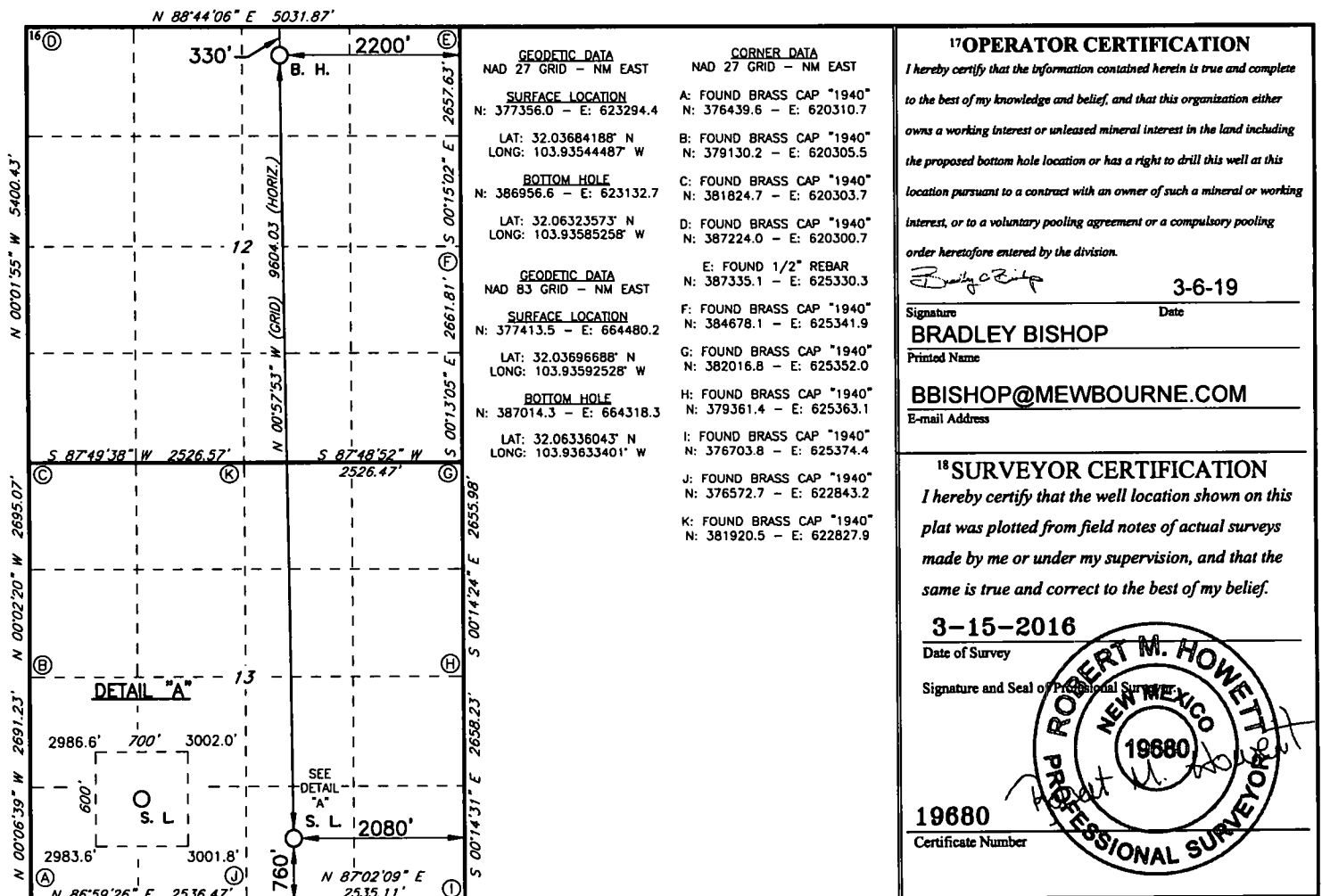
Form C-102
Revised August 1, 2011
Submit one copy to appropriate
District Office

☒ AMENDED REPORT

WELL LOCATION AND ACREAGE DEDICATION PLAT

| | | | | | | | | | |
|--|---------------|---|--------------|--|----------------------|---------------------------|-----------------------|---------------------------------|----------------|
| ¹ API Number 30-015-44038 | | ² Pool Code 98220 | | ³ Pool Name PURPLE SAGE WOLFCAMP GAS | | | | | |
| ⁴ Property Code 317296 | | ⁵ Property Name FULLER 13/12 WIJB FED COM | | | | | | ⁶ Well Number 3H | |
| ⁷ OGRID NO. 14744 | | ⁸ Operator Name MEWBOURNE OIL COMPANY | | | | | | ⁹ Elevation 2994' | |
| ¹⁰ Surface Location | | | | | | | | | |
| UL or lot no. 0 | Section 13 | Township 26S | Range 29E | Lot Idn | Feet from the 760 | North/South line SOUTH | Feet From the 2080 | East/West line EAST | County EDDY |
| ¹¹ Bottom Hole Location If Different From Surface | | | | | | | | | |
| UL or lot no. B | Section 12 | Township 26S | Range 29E | Lot Idn | Feet from the 330 | North/South line NORTH | Feet from the 2200 | East/West line EAST | County EDDY |
| ¹² Dedicated Acres 640 | | ¹³ Joint or Infill | | ¹⁴ Consolidation Code | | ¹⁵ Order No. | | | |

No allowable will be assigned to this completion until all interest have been consolidated or a non-standard unit has been approved by the division.



RRC - Firm No.: TX 10193838 NM 4655451 - Job No.: LS1602063

RWP 3-6-19