

**NM OIL CONSERVATION
ARTESIA DISTRICT**

MAR 19 2019

Intent ☒ As Drilled ☐

RECEIVED

| | | |
|--------------------------------------|---|---------------------|
| API # 30-015-4598 | | |
| Operator Name: APACHE CORPORATION | Property Name: PALMILLO 10 STATE COM | Well Number 336H |

Kick Off Point (KOP)

| | | | | | | | | | |
|------------------------|---------------|-----------------|--------------|-----|---------------------------|---------------|-------------|---------------|----------------|
| UL A | Section 10 | Township 19S | Range 28E | Lot | Feet 400 | From N/S N | Feet 100 | From E/W E | County EDDY |
| Latitude 32.6814603 | | | | | Longitude -104.1560731 | | | NAD 83 | |

First Take Point (FTP)

| | | | | | | | | | |
|------------------------|---------------|-----------------|--------------|-----|---------------------------|---------------|-------------|---------------|----------------|
| UL A | Section 10 | Township 19S | Range 28E | Lot | Feet 400 | From N/S N | Feet 100 | From E/W E | County EDDY |
| Latitude 32.6814603 | | | | | Longitude -104.1560731 | | | NAD 83 | |

Last Take Point (LTP)

| | | | | | | | | | |
|------------------------|---------------|-----------------|--------------|-----|---------------------------|---------------|-------------|---------------|----------------|
| UL D | Section 10 | Township 19S | Range 28E | Lot | Feet 400 | From N/S N | Feet 100 | From E/W W | County EDDY |
| Latitude 32.6813139 | | | | | Longitude -104.1722418 | | | NAD 83 | |

Is this well the defining well for the Horizontal Spacing Unit? ☐

Is this well an infill well? ☐

If infill is yes please provide API if available, Operator Name and well number for Defining well for Horizontal Spacing Unit.

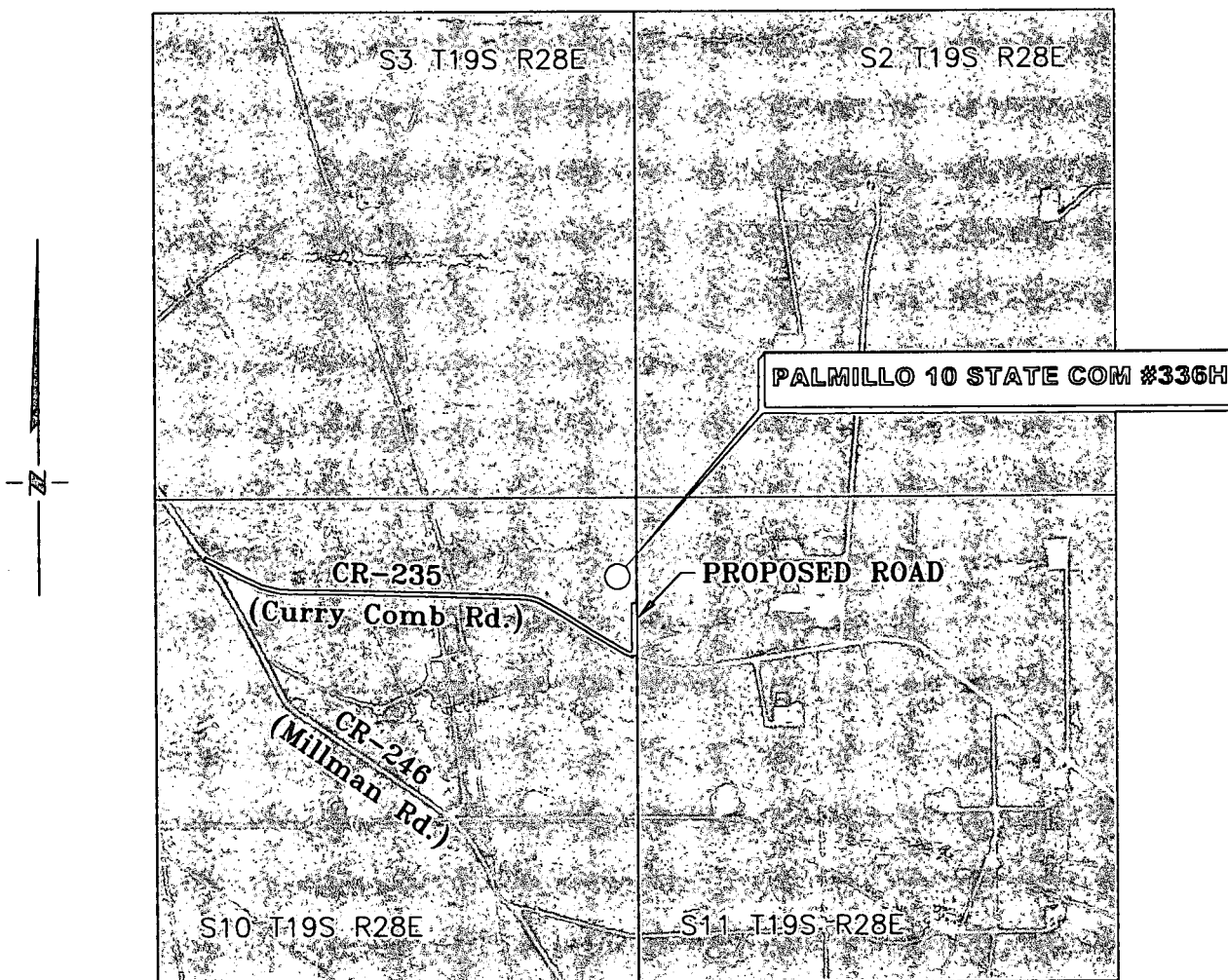
| | | |
|----------------|----------------|-------------|
| API # | | |
| Operator Name: | Property Name: | Well Number |

KZ 06/29/2018

| |
|---------------------|
| SCALE: 1" = 100' |
| SURVEYED BY: AB/RU |
| DRAWN BY: CAR |
| APPROVED BY: JLF |
| JOB NO.: LS18121354 |
| SHEET: 336 PAD |

VICINITY MAP

NOT TO SCALE



**SECTION 10, TWP. 19 SOUTH, RGE. 28 EAST,
N. M. P. M., EDDY COUNTY, NEW MEXICO**

OPERATOR: Apache Corporation
LEASE: Palmillo 10 State Com
WELL NO.: 336H

LOCATION: 810' FNL & 180' FEL
ELEVATION: 3490'

Copyright 2018 - All Rights Reserved

DATE: 01-08-2018

| NO. | REVISION | DATE |
|-----|----------|------|
| 1 | | |
| 2 | | |
| 3 | | |
| 4 | | |

RRC

SURVEYING, LLC

701 S. CECIL ST., HOBBS, NM 88240 (575) 964-8200

SCALE: 1" = 2000'

SURVEYED BY: AB/RU

DRAWN BY: CAR

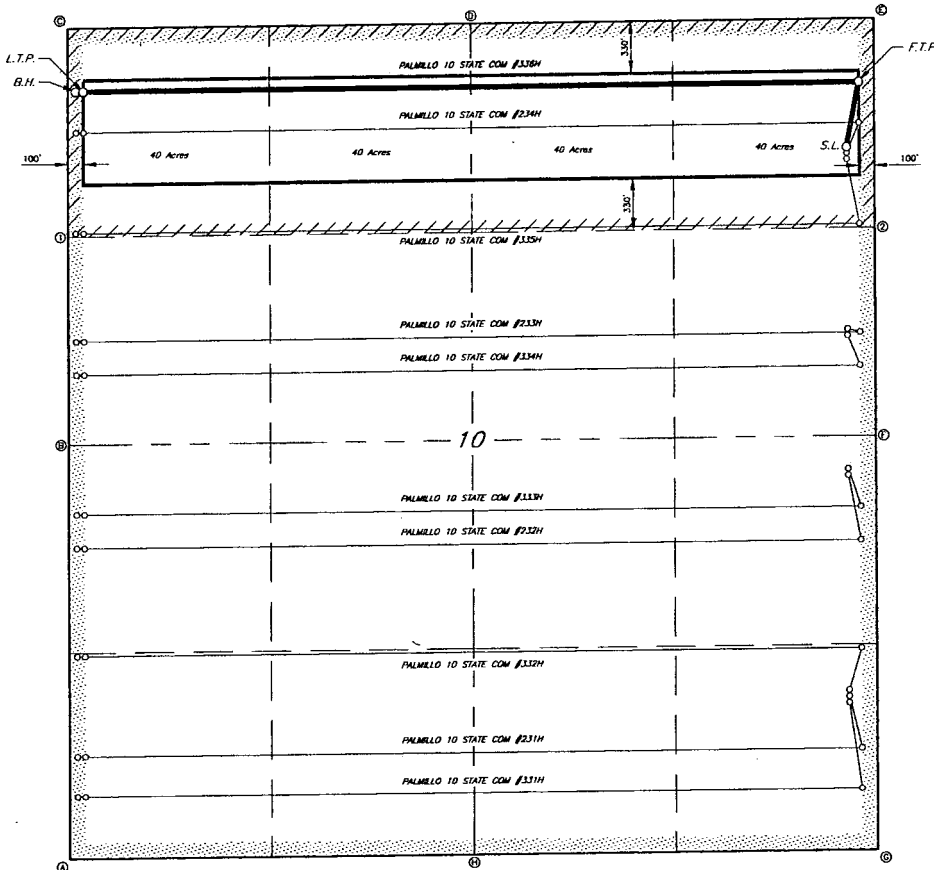
APPROVED BY: JLF

JOB NO.: LS18121354

SHEET: 336 VM

RRC

SURVEYING, LLC
701 S. COOL STREET
HOUSTON, TX 77058 (281) 964-4300



GEODETIC DATA
NAD 83 GRID - NM EAST
SURFACE LOCATION (S.L.)
N 611281.8 - E 595787.4
LAT: 32.880331° N
LONG: 104.154330° W
FIRST TAKE POINT (F.T.P.)
N 611682.0 - E 595875.8
LAT: 32.881483° N
LONG: 104.156073° W
LAST TAKE POINT (L.T.P.)
N 611630.8 - E 590801.2
LAT: 32.881313° N
LONG: 104.172241° W
BOTTOM HOLE (B.H.)
N 611630.2 - E 590851.2
LAT: 32.881312° N
LONG: 104.172404° W

CORNER DATA
NAD 83 GRID - NM EAST
A: FOUND BRASS CAP "1941"
N 606757.3 - E 590806.4
B: FOUND BRASS CAP "1941"
N 608353.2 - E 590803.6
C: FOUND BRASS CAP "1941"
N 612029.5 - E 590800.8
D: FOUND BRASS CAP "1941"
N 612080.8 - E 593387.2
E: FOUND BRASS CAP "1911"
N 612093.1 - E 595874.2
F: FOUND BRASS CAP "1941"
N 608454.0 - E 595804.8
G: FOUND BRASS CAP "1941"
N 606815.2 - E 595803.1
H: FOUND BRASS CAP "1941"
N 606785.9 - E 593400.0

CALCULATED POINTS
1: N 610711.3 - E 590802.2
2: N 610773.5 - E 595879.4

Copyright 2018 All Rights Reserved

APACHE CORPORATION

LEASE AREA FOR THE
PALMELO 10 STATE COM #336H
SECTION 10, T18S, R26E
EDDY COUNTY, NEW MEXICO

| | | |
|------------------|--------------------|---------------------|
| SCALE: 1"=600' | SURVEYED BY: AB/RU | JOB NO.: L518121354 |
| DATE: 01-08-2018 | DRAWN BY: CAR | DWG: 336 LEASE |
| REV: | APPROVED BY: JLF | SHEET: 1 OF 1 |