

**NM OIL CONSERVATION  
ARTESIA DISTRICT**

MAR 19 2019

Intent ☒ As Drilled ☐

**RECEIVED**

API # <b>30-015-45807</b>		
Operator Name: <b>APACHE CORPORATION</b>	Property Name: <b>PALMILLO 10 STATE COM</b>	Well Number <b>332H</b>

**Kick Off Point (KOP)**

UL	Section	Township	Range	Lot	Feet	From N/S	Feet	From E/W	County
p	10	19S	28E		1296	S	100	E	EDDY
Latitude <b>32.6716140</b>					Longitude <b>-104.1560499</b>			NAD <b>83</b>	

**First Take Point (FTP)**

UL	Section	Township	Range	Lot	Feet	From N/S	Feet	From E/W	County
p	10	19S	28E		1296	S	100	E	EDDY
Latitude <b>32.6716410</b>					Longitude <b>-104.1560499</b>			NAD <b>83</b>	

**Last Take Point (LTP)**

UL	Section	Township	Range	Lot	Feet	From N/S	Feet	From E/W	County
M	10	19S	28E		1296	S	100	W	EDDY
Latitude <b>32.6714827</b>					Longitude <b>-104.1722470</b>			NAD <b>83</b>	

Is this well the defining well for the Horizontal Spacing Unit? ☐

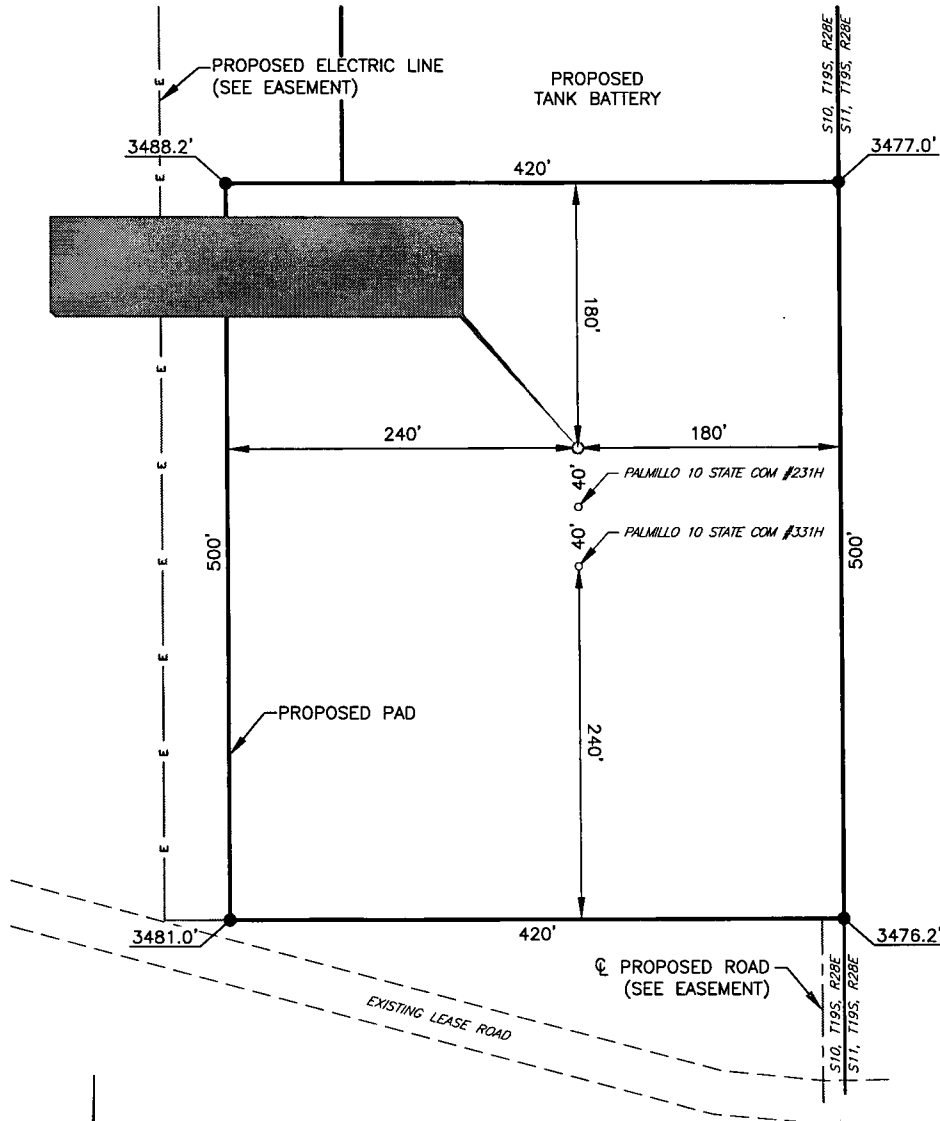
Is this well an infill well? ☐

If infill is yes please provide API if available, Operator Name and well number for Defining well for Horizontal Spacing Unit.

API #		
Operator Name:	Property Name:	Well Number

KZ 06/29/2018

**APACHE CORPORATION**  
**PALMILLO 10 STATE COM #332H**  
**(1030' FSL & 180' FEL)**  
**SECTION 10, T19S, R28E**  
**N. M. P. M., EDDY COUNTY, NEW MEXICO**



DIRECTIONS TO LOCATION

From the intersection between CR-246 (Millman Rd.) and CR-235 (Curry Comb Rd.),  
 Go Southeast on CR-246 approx. 1.0 mile to lease road on the left;  
 Go East on lease road approx. 0.3 miles to proposed road on the left;  
 Go North on proposed road approx. 125 feet to proposed location on the left.

THIS IS NOT A BOUNDARY SURVEY, APPARENT PROPERTY CORNERS AND  
 PROPERTY LINES ARE SHOWN FOR INFORMATION ONLY, BOUNDARY DATA IS  
 SHOWN FROM A PREVIOUS SURVEY REFERENCED HEREON.

I, Jeffrey L. Fansler, a N. M. Professional Surveyor, hereby certify  
 that I prepared this plat from an actual survey made on the  
 ground under my direct supervision, said survey and plat meet  
 the Min. Stds. for Land Surveying in the State of N. M. and are  
 true and correct to the best of my knowledge and belief.

*Jeffrey L. Fansler*  
 Jeffrey L. Fansler NM PS 10034



SCALE: 1" = 100'  
 0 50' 100'  
 BEARINGS ARE GRID NAD 83  
 NM EAST  
 DISTANCES ARE HORIZ. GROUND.

Copyright 2018 - All Rights Reserved

NO.	REVISION	DATE
1		
2		
3		
4		

**RRC**

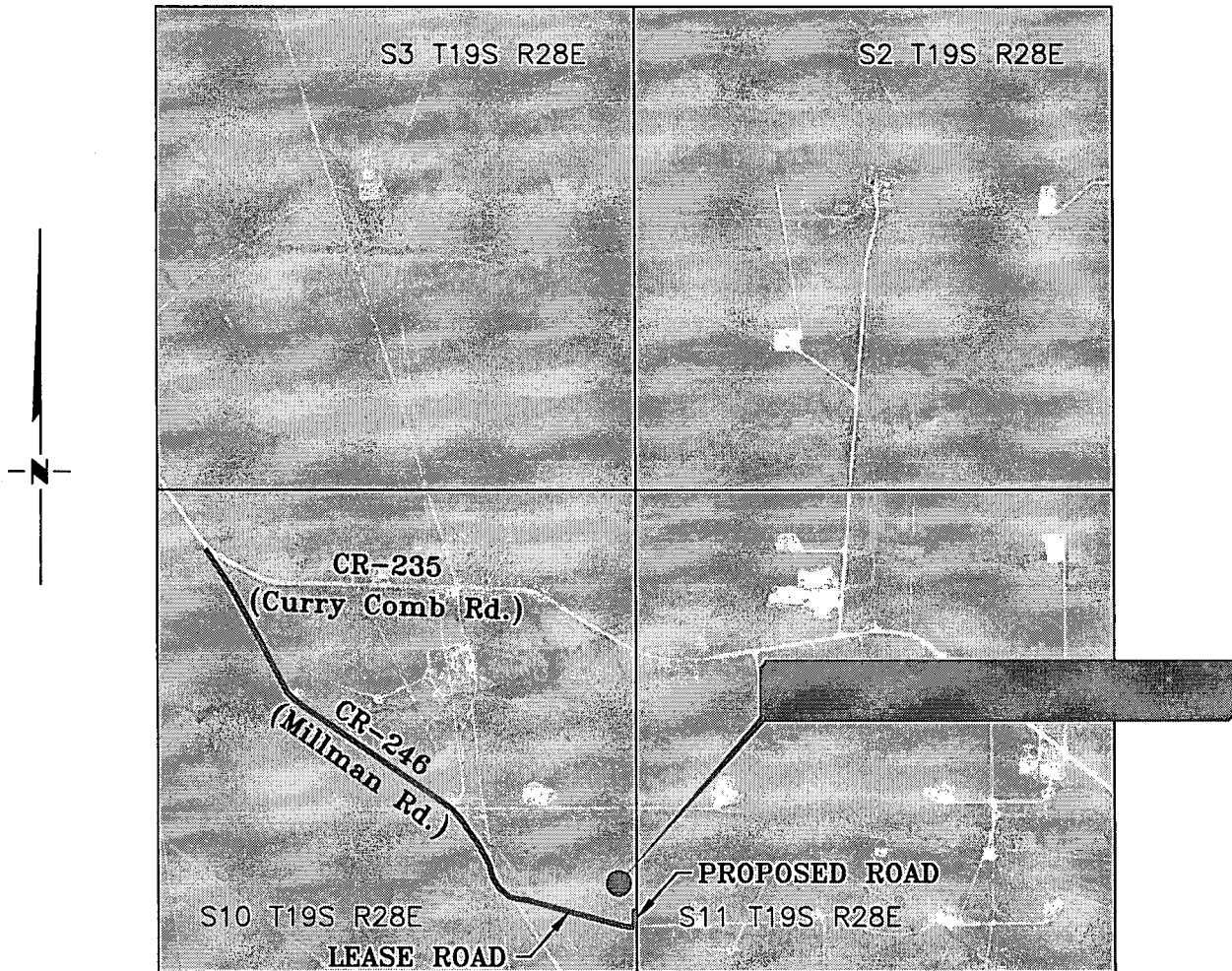
SURVEYING, LLC

701 S. CECIL ST., HOBBS, NM 88240 (575) 964-8200

SCALE: 1" = 100'  
 SURVEYED BY: AB/RU  
 DRAWN BY: CAR  
 APPROVED BY: JLF  
 JOB NO.: LS18121351  
 SHEET: 332 PAD

# VICINITY MAP

NOT TO SCALE



*SECTION 10, TWP. 19 SOUTH, RGE. 28 EAST,  
N. M. P. M., EDDY COUNTY, NEW MEXICO*

OPERATOR: Apache Corporation  
LEASE: Palmillo 10 State Com  
WELL NO.: 332H

LOCATION: 1030' FSL & 180' FEL  
ELEVATION: 3488'

*Copyright 2018 - All Rights Reserved*

DATE: 01-08-2018		
NO.	REVISION	DATE
1		
2		
3		
4		

## RRC

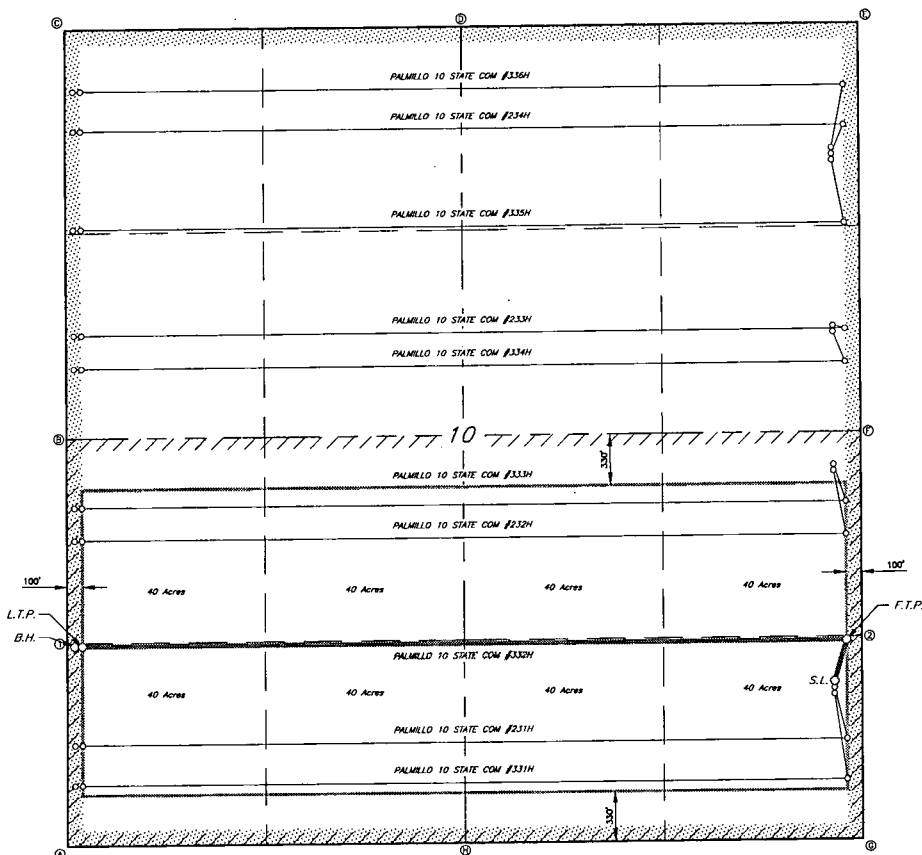
SURVEYING, LLC

701 S. CECIL ST., HOBBS, NM 88240 (575) 964-8200

SCALE: 1" = 2000'  
SURVEYED BY: AB/RU  
DRAWN BY: CAR  
APPROVED BY: JLF  
JOB NO.: LS18121351  
SHEET: 332 VM

# RRC

SURVEYING, LLC  
701 S. CIMA STREET  
HOMER, AL 36349 (205) 854-8200



**GEODETTIC DATA**  
NAD 83 GRID - NM EAST  
SUBSTATION LOCATION (S.L.)  
N 607043.0 - E 590500.8  
LAT: 32.8708809° N  
LONG: 104.1563065° W  
FIRST TAKE POINT (T.T.P.)  
N 608109.8 - E 595880.9  
LAT: 32.8718147° N  
LONG: 104.1560499° W  
LAST TAKE POINT (L.T.P.)  
N 608054.1 - E 590500.0  
LAT: 32.8714927° N  
LONG: 104.1722470° W  
BOTTOM HOLE (B.H.)  
N 608053.5 - E 590855.0  
LAT: 32.8714814° N  
LONG: 104.1724095° W

**CORNER DATA**  
NAD 83 GRID - NM EAST  
A. FOUND BRASS CAP "1941"  
N 608757.3 - E 590808.4  
B. FOUND BRASS CAP "1941"  
N 608393.2 - E 590803.8  
C. FOUND BRASS CAP "1941"  
N 612029.5 - E 590800.8  
D. FOUND BRASS CAP "1941"  
N 612060.8 - E 593387.2  
E. FOUND BRASS CAP "1911"  
N 612093.1 - E 593974.2  
F. FOUND BRASS CAP "1941"  
N 608454.0 - E 595084.8  
G. FOUND BRASS CAP "1941"  
N 608415.2 - E 595993.1  
H. FOUND BRASS CAP "1941"  
N 608785.9 - E 593400.0

**CALCULATED POINTS**  
1: N 608075.2 - E 590805.0  
2: N 608134.6 - E 595988.8

Copyright 2018 All Rights Reserved

APACHE CORPORATION

LEASE AREA FOR THE  
PALMILLO 10 STATE COM #332E  
SECTION 10, T19S, R28E  
RODNEY COUNTY, NEW MEXICO

SCALE: 1"=800' SURVEYED BY: AB/RU JOB No.: L518121351  
DATE: 01-08-2018 DRAWN BY: CAR DMC: 332 LEASE  
REV: APPROVED BY: JLF SHEET: 1 OF 1