

**NM OIL CONSERVATION
ARTESIA DISTRICT**

MAR 19 2019

Intent ☒ As Drilled ☐

RECEIVED

API # 30-015-45809	
Operator Name: APACHE CORPORATION	Property Name: PALMILLO 10 STATE COM
Well Number 334H	

Kick Off Point (KOP)

UL H	Section 10	Township 19S	Range 28E	Lot	Feet 2192	From N/S N	Feet 100	From E/W E	County EDDY
Latitude 32.6765357					Longitude -104.1560599			NAD 83	

First Take Point (FTP)

UL H	Section 10	Township 19S	Range 28E	Lot	Feet 2192	From N/S N	Feet 100	From E/W E	County EDDY
Latitude 32.6765357					Longitude -104.1560599			NAD 83	

Last Take Point (LTP)

UL E	Section 10	Township 19S	Range 28E	Lot	Feet 2192	From N/S N	Feet 100	From E/W W	County EDDY
Latitude 32.6763892					Longitude -104.1722444			NAD 83	

Is this well the defining well for the Horizontal Spacing Unit? ☐

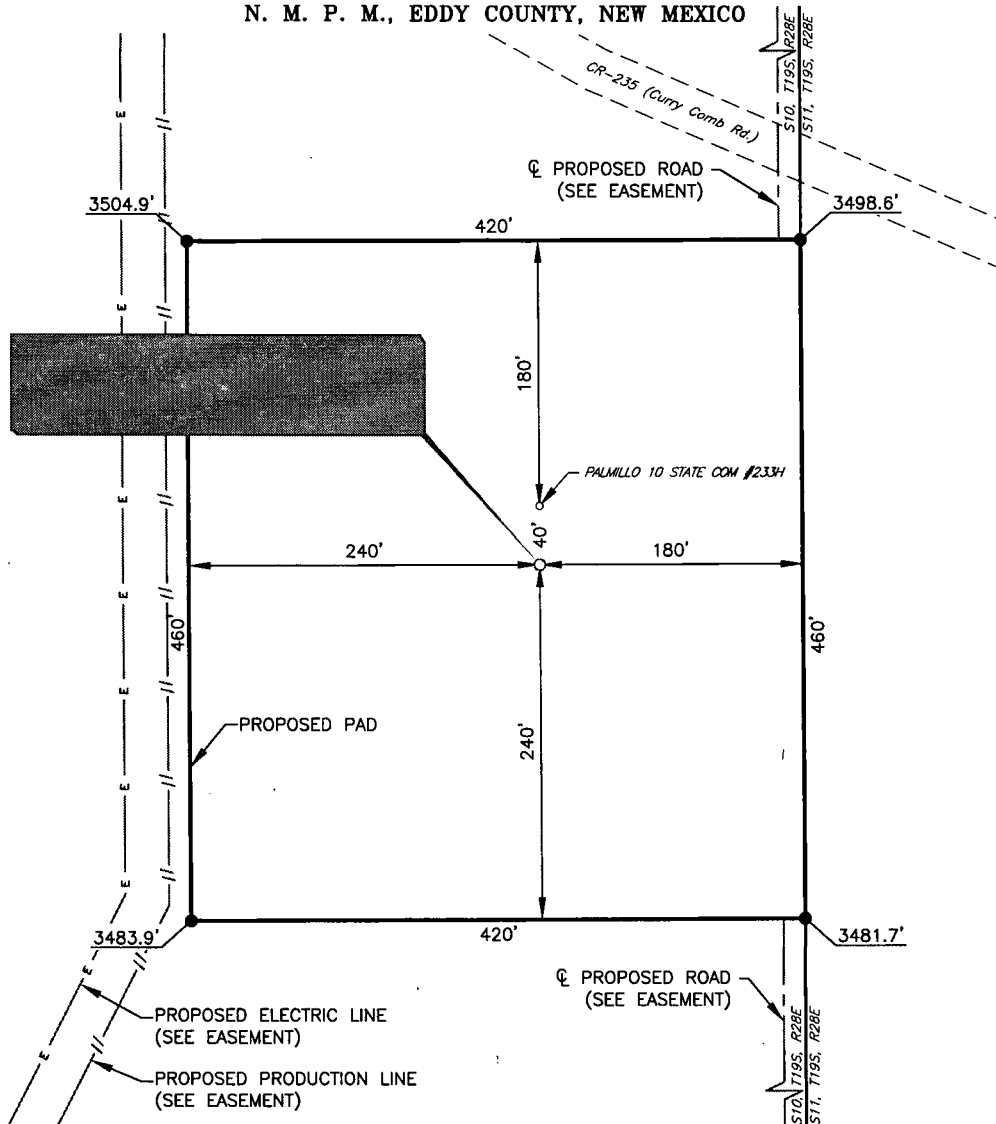
Is this well an infill well? ☐

If infill is yes please provide API if available, Operator Name and well number for Defining well for Horizontal Spacing Unit.

API #	
Operator Name:	Property Name:
Well Number	

KZ 06/29/2018

APACHE CORPORATION
PALMILLO 10 STATE COM #334H
(2000' FNL & 180' FEL)
SECTION 10, T19S, R28E
N. M. P. M., EDDY COUNTY, NEW MEXICO



DIRECTIONS TO LOCATION

From the intersection between CR-246 (Millman Rd.) and CR-235 (Curry Comb Rd.),
Go Southeast on CR-235 approx. 0.9 miles to proposed road on the right;
Go South on proposed road approx. 60 feet to proposed location on the right.

THIS IS NOT A BOUNDARY SURVEY, APPARENT PROPERTY CORNERS AND
PROPERTY LINES ARE SHOWN FOR INFORMATION ONLY, BOUNDARY DATA IS
SHOWN FROM A PREVIOUS SURVEY REFERENCED HEREON.

I, Jeffrey L. Fansler, a N. M. Professional Surveyor, hereby certify
that I prepared this plat from an actual survey made on the
ground under my direct supervision, said survey and plat meet
the Min. Stds. for Land Surveying in the State of N. M. and are
true and correct to the best of my knowledge and belief.

Jeffrey L. Fansler
Jeffrey L. Fansler NM PS 10034



SCALE: 1" = 100'
0 50' 100'
BEARINGS ARE GRID NAD 83
NM EAST
DISTANCES ARE HORIZ. GROUND.

Copyright 2018 - All Rights Reserved

NO.	REVISION	DATE
1		
2		
3		
4		

RRC

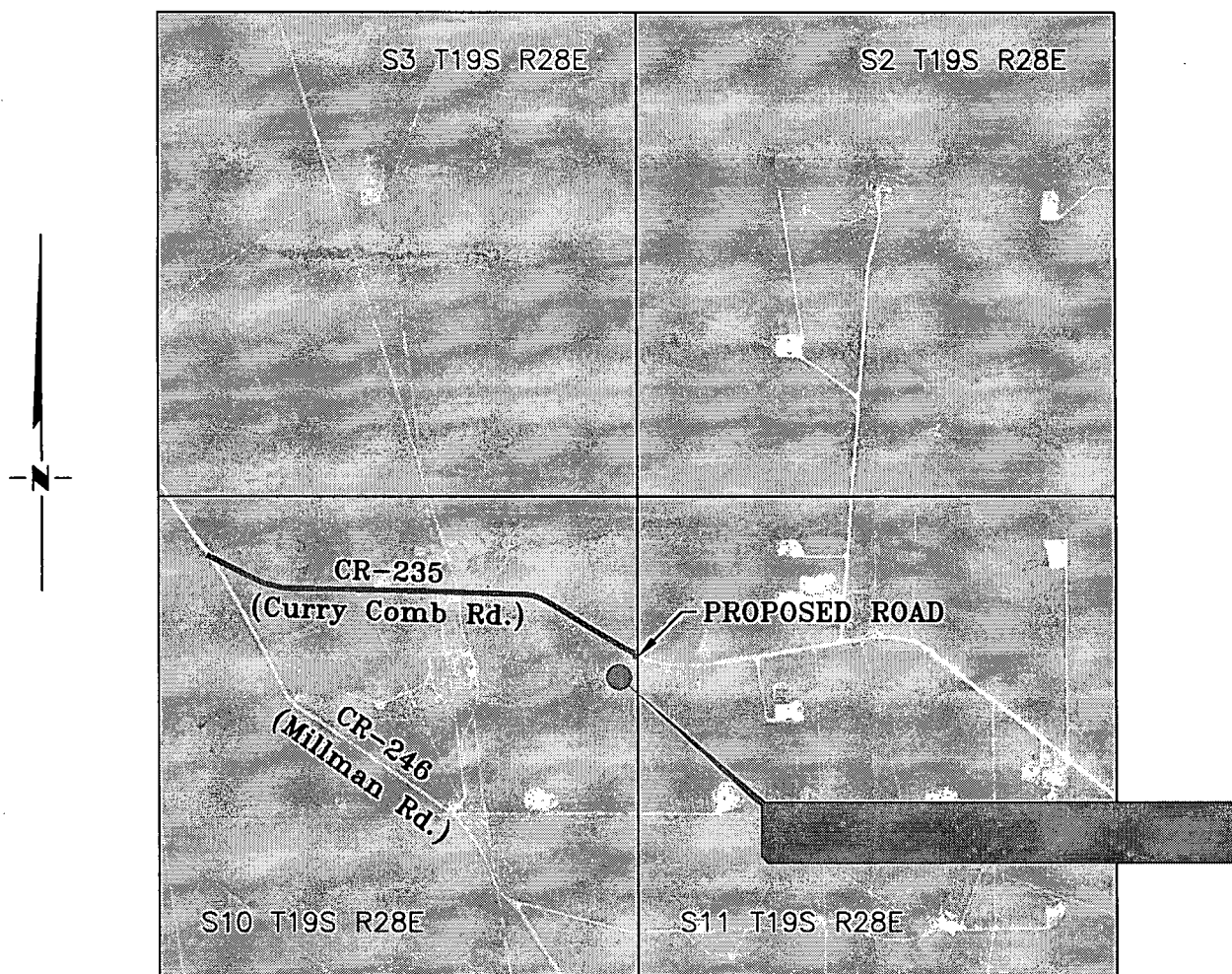
SURVEYING, LLC

701 S. CECIL ST., HOBBS, NM 88240 (575) 964-8200

SCALE: 1" = 100'
SURVEYED BY: AB/RU
DRAWN BY: CAR
APPROVED BY: JLF
JOB NO.: LS18121353
SHEET: 334 PAD

VICINITY MAP

NOT TO SCALE




**SECTION 10, TWP. 19 SOUTH, RGE. 28 EAST,
N. M. P. M., EDDY COUNTY, NEW MEXICO**

OPERATOR: Apache Corporation
LEASE: Palmillo 10 State Com
WELL NO.: 334H

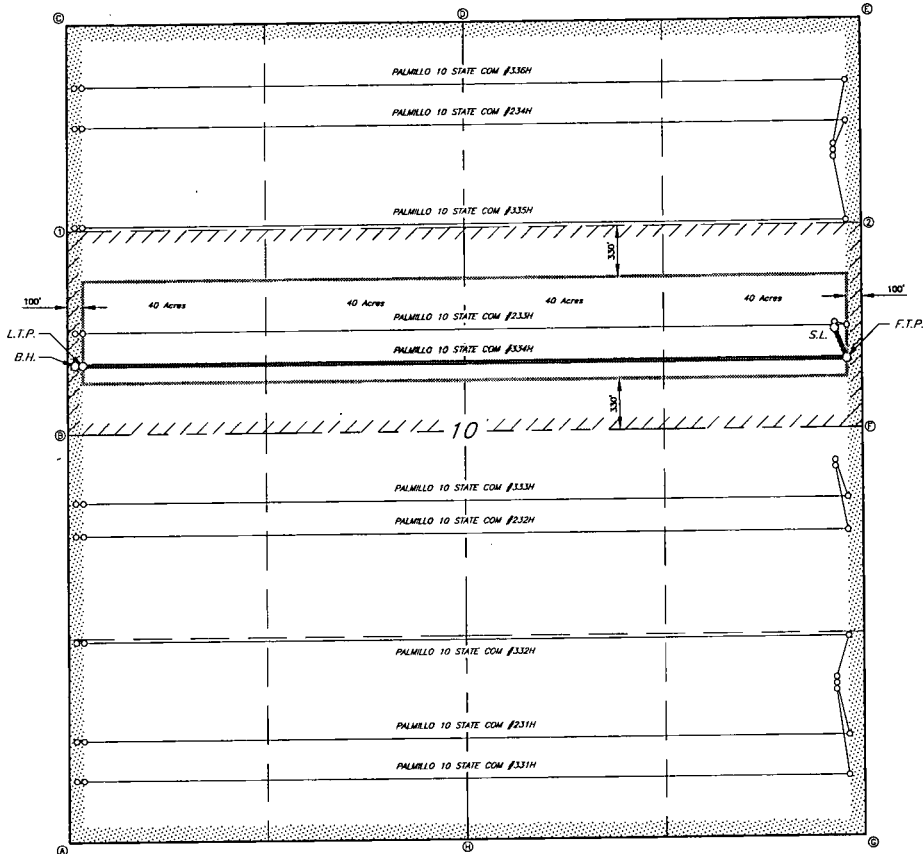
LOCATION: 2000' FNL & 180' FEL
ELEVATION: 3492'

Copyright 2018 - All Rights Reserved

DATE: 01-08-2018			 RRC SURVEYING, LLC 701 S. CECIL ST., HOBBS, NM 88240 (575) 964-8200	SCALE: 1" = 2000'	
NO.	REVISION	DATE		SURVEYED BY: AB/RU	
1				DRAWN BY: CAR	
2				APPROVED BY: JLF	
3				JOB NO.: LS18121353	
4				SHEET: 334 VM	

RRC

SURVEYING, LLC
791 S. CEDAR STREET
HOMER, AK 99603 (907) 864-8205



GEODETIC DATA
NAD 83 GRID - NM EAST
SURFACE LOCATION (S.L.)
N 810091.3 - E 590802.1
LAT: 32.8770909° N
LONG: 104.1563214° W
FIRST TAKE POINT (F.T.P.)
N 809900.4 - E 590802.8
LAT: 32.8765357° N
LONG: 104.1560569° W
LAST TAKE POINT (L.T.P.)
N 809839.1 - E 590803.1
LAT: 32.8763892° N
LONG: 104.1722444° W
BOTTOM HOLE (B.H.)
N 809454.0 - E 590803.1
LAT: 32.8763877° N
LONG: 104.1724068° W

CORNER DATA
NAD 83 GRID - NM EAST
A: FOUND BRASS CAP "1941"
N 808757.3 - E 590808.4
B: FOUND BRASS CAP "1941"
N 609323.2 - E 590803.6
C: FOUND BRASS CAP "1941"
N 812029.5 - E 590800.8
D: FOUND BRASS CAP "1941"
N 812080.8 - E 593387.2
E: FOUND BRASS CAP "1911"
N 812093.1 - E 595974.2
F: FOUND BRASS CAP "1941"
N 809454.0 - E 590803.1
G: FOUND BRASS CAP "1941"
N 609815.2 - E 595993.1
H: FOUND BRASS CAP "1941"
N 606785.9 - E 593400.0

CALCULATED POINTS
1: N 810711.3 - E 590802.2
2: N 810773.5 - E 595979.4

Copyright 2018 All Rights Reserved

APACHE CORPORATION

LEASE AREA FOR THE
PALMILLO 10 STATE COM #034H
SECTION 10, T18S, R28E
KODY COUNTY, NEW MEXICO

SCALE: 1"=800'	SUBMITTED BY: AD/NU	JOB No.: LS18121353
DATE: 01-08-2018	DRAWN BY: CAR	DWG: 334 LEASE
REV:	APPROVED BY: JLF	SHEET: 1 OF 1