

**NM OIL CONSERVATION
ARTESIA DISTRICT**

MAR 19 2019

Intent ☒ As Drilled ☐

RECEIVED

API # 30-015-45791		
Operator Name: APACHE CORPORATION	Property Name: PALMILLO 10 STATE	Well Number 233H

Kick Off Point (KOP)

UL H	Section 10	Township 19S	Range 28E	Lot	Feet 1980	From N/S N	Feet 100	From E/W E	County EDDY
Latitude 32.6771183					Longitude -104.1560615			NAD 83	

First Take Point (FTP)

UL H	Section 10	Township 19S	Range 28E	Lot	Feet 1980	From N/S N	Feet 100	From E/W E	County EDDY
Latitude 32.6771183					Longitude -104.1560615			NAD 83	

Last Take Point (LTP)

UL E	Section 10	Township 19S	Range 28E	Lot	Feet 1980	From N/S N	Feet 100	From E/W W	County EDDY
Latitude 32.6769718					Longitude -104.1722441			NAD 83	

Is this well the defining well for the Horizontal Spacing Unit? ☐

Is this well an infill well? ☐

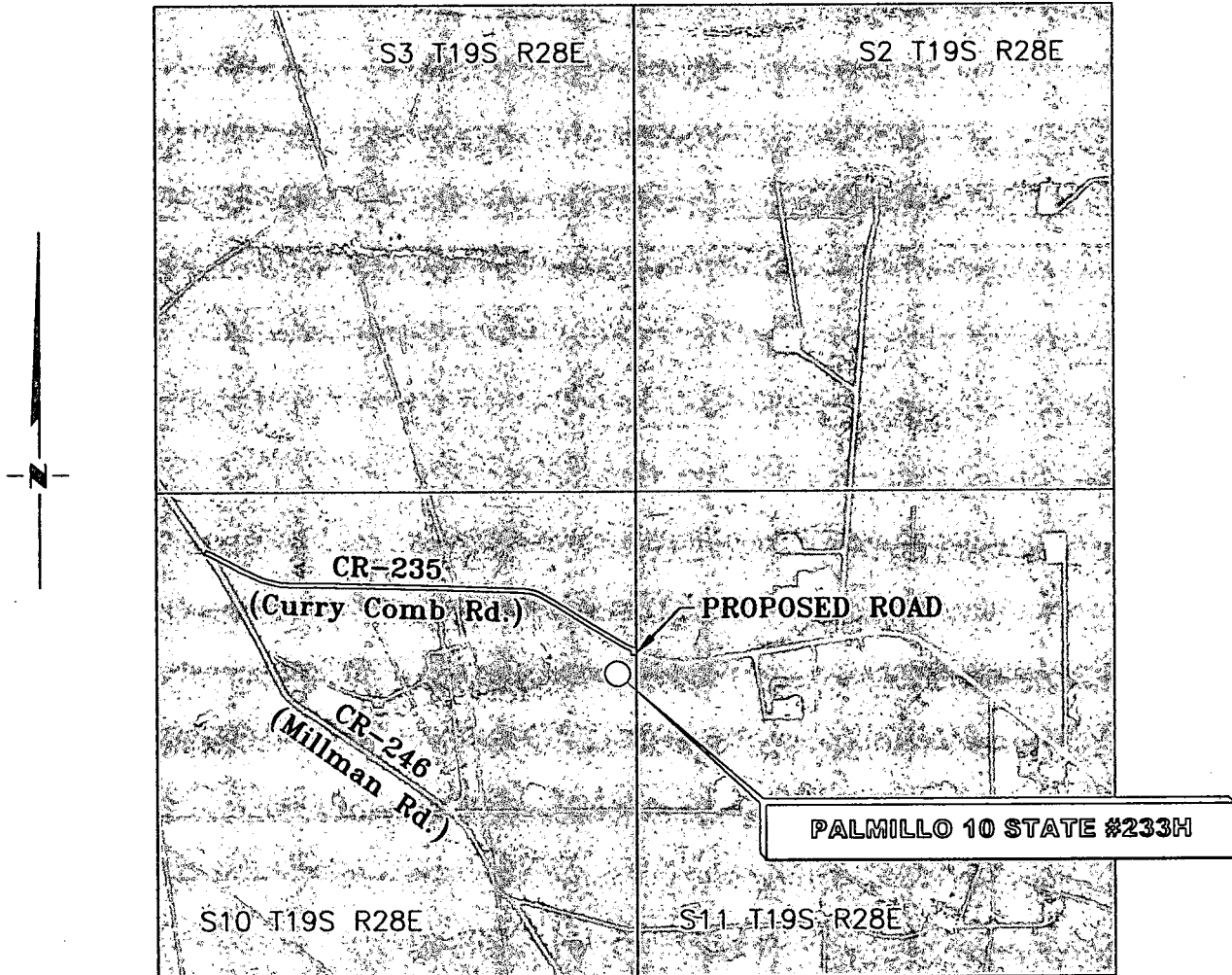
If infill is yes please provide API if available, Operator Name and well number for Defining well for Horizontal Spacing Unit.

API #		
Operator Name:	Property Name:	Well Number

KZ 06/29/2018

VICINITY MAP

NOT TO SCALE



**SECTION 10, TWP. 19 SOUTH, RGE. 28 EAST,
N. M. P. M., EDDY COUNTY, NEW MEXICO**

OPERATOR: Apache Corporation
LEASE: Palmillo 10 State
WELL NO.: 233H

LOCATION: 1960' FNL & 180' FEL
ELEVATION: 3493'

Copyright 2018 - All Rights Reserved

DATE: 01-08-2018

NO.	REVISION	DATE
1	WELLS NAME	01.31.19
2		
3		
4		

RRC

SURVEYING, LLC

701 S. CECIL ST., HOBBS, NM 88240 (575) 964-8200

SCALE: 1" = 2000'

SURVEYED BY: AB/RU

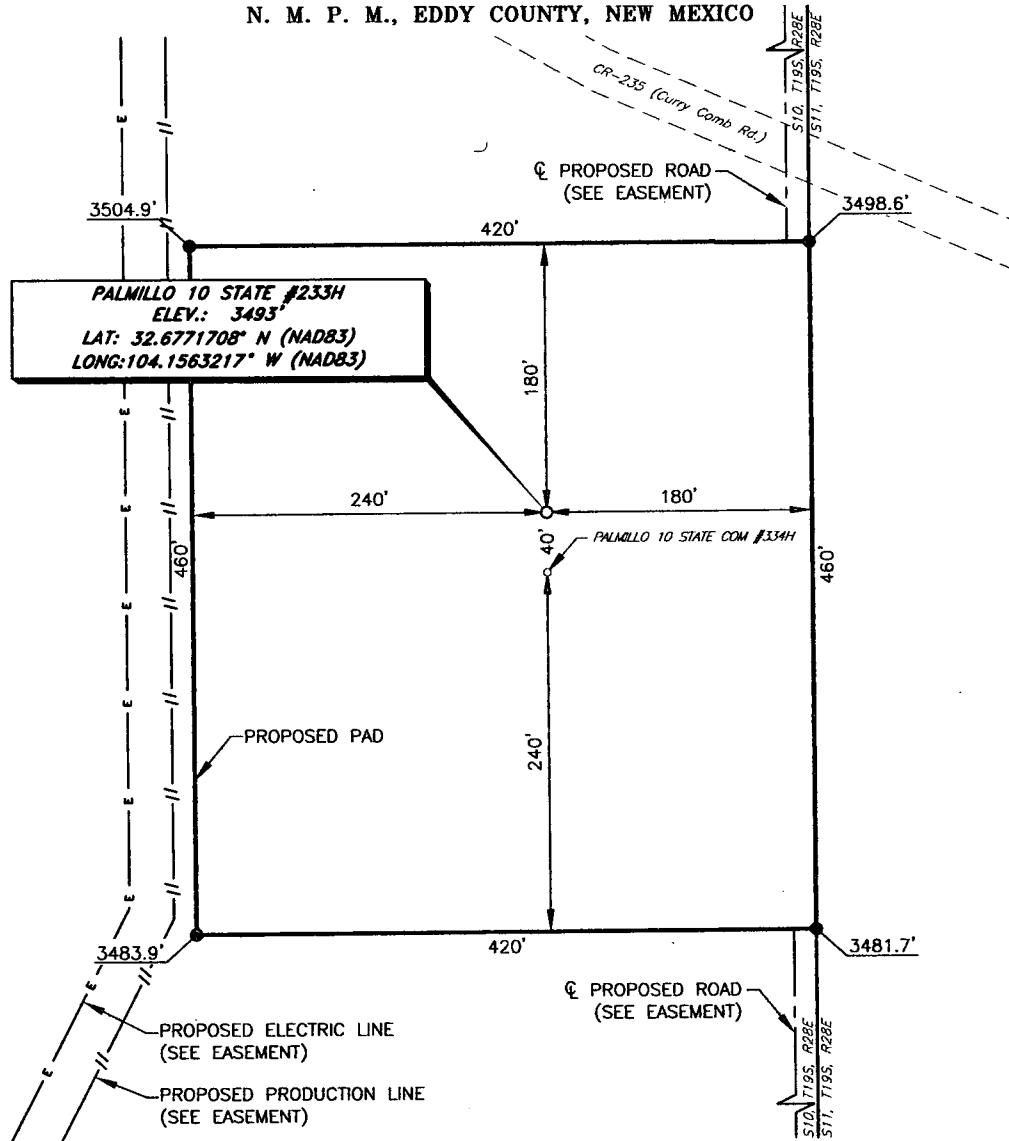
DRAWN BY: CAR

APPROVED BY: JLF

JOB NO.: LS18121353

SHEET: 233 VM

APACHE CORPORATION
PALMILLO 10 STATE #233H
(1960' FNL & 180' FEL)
SECTION 10, T19S, R28E
N. M. P. M., EDDY COUNTY, NEW MEXICO



DIRECTIONS TO LOCATION

From the intersection between CR-246 (Millman Rd.) and CR-235 (Curry Comb Rd.),
 Go Southeast on CR-235 approx. 0.9 miles to proposed road on the right;
 Go South on proposed road approx. 60 feet to proposed location on the right.

THIS IS NOT A BOUNDARY SURVEY, APPARENT PROPERTY CORNERS AND
 PROPERTY LINES ARE SHOWN FOR INFORMATION ONLY, BOUNDARY DATA IS
 SHOWN FROM A PREVIOUS SURVEY REFERENCED HEREON.

I, Jeffrey L. Fansler, a N. M. Professional Surveyor, hereby certify
 that I prepared this plat from an actual survey made on the
 ground under my direct supervision, said survey and plat meet
 the Min. Stds. for Land Surveying in the State of N. M. and are
 true and correct to the best of my knowledge and belief.

Jeffrey L. Fansler
 Jeffrey L. Fansler NM PS 10034



SCALE: 1" = 100'
 0 50' 100'
 BEARINGS ARE GRID NAD 83
 NM EAST
 DISTANCES ARE HORIZ. GROUND.

Copyright 2018 - All Rights Reserved

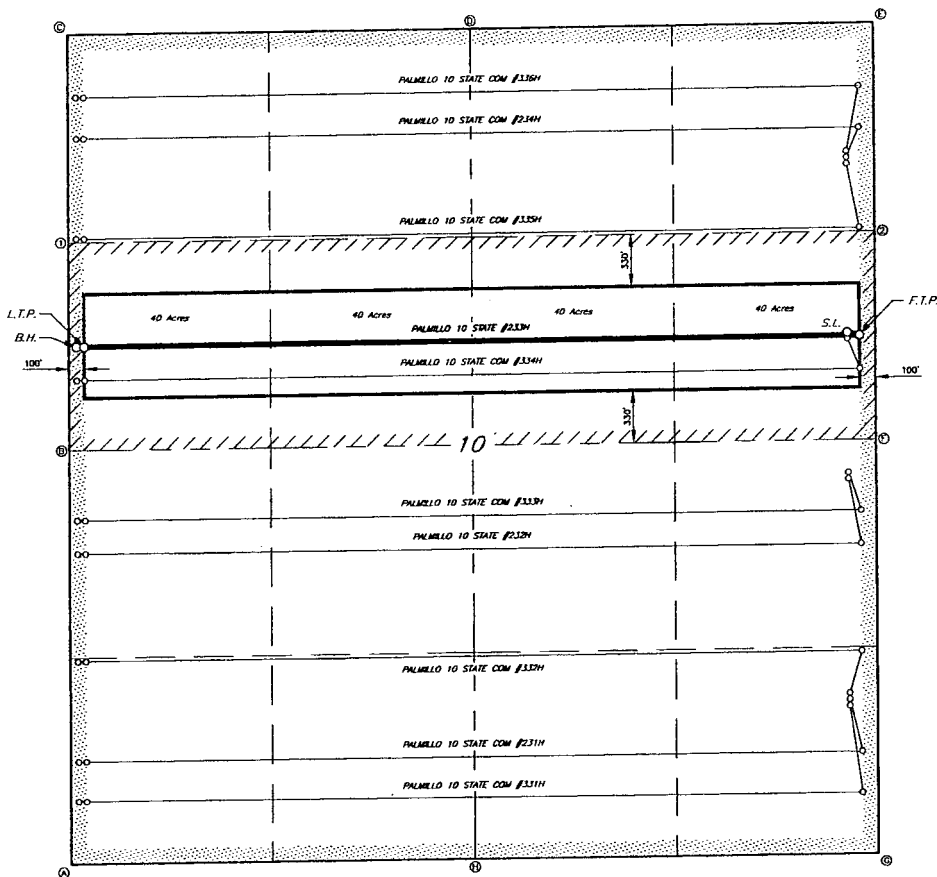
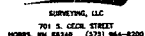
DATE: 01-08-2018		
NO.	REVISION	DATE
1	WELLS NAME	01.31.19
2		
3		
4		

RRC

SURVEYING, LLC

701 S. CECIL ST., HOBBS, NM 88240 (575) 964-8200

SCALE: 1" = 100'
SURVEYED BY: AB/RU
DRAWN BY: CAR
APPROVED BY: JLF
JOB NO.: LS18121353
SHEET: 233 PAD



GEODETIC DATA
 MAD 8.3 GRID -- NM EAST

SURFACE LOCATION (S.L.)
 N 610131.3 -- E 595901.9
 LAT:32.6771708° N
 LONG:104.1563217° W

FIRST TAKE POINT (T.P.)
 N 610112.3 -- E 595862.0
 LAT:32.6771183° N
 LONG:104.1560615° W

LAST TAKE POINT (T.P.)
 N 610051.1 -- E 590902.9
 LAT:32.6769718° N
 LONG:104.1722441° W

BOTTOM HOLE (B.H.)
 N 610050.5 -- E 590852.9
 LAT:32.6769703° N
 LONG:104.1724065° W

CORNER DATA
 NAD 83 GRID - NM EAST

A: FOUND BRASS CAP "1941"
 N 606757.3 - E 590806.8

B: FOUND BRASS CAP "1941"
 N 609333.2 - E 590803.6

C: FOUND BRASS CAP "1941"
 N 612029.5 - E 590800.8

D: FOUND BRASS CAP "1941"
 N 612060.8 - E 591387.2

E: FOUND BRASS CAP "1911"
 N 612093.1 - E 595974.2

F: FOUND BRASS CAP "1974"
 N 609454.0 - E 595984.6

G: FOUND BRASS CAP "1941"
 N 606815.2 - E 595993.1

H: FOUND BRASS CAP "1941"
 N 606785.9 - E 593400.0

CALCULATED POINTS
1: N 610711.3 - E 590802.2
2: N 610773.5 - E 595979.4

Copyright 2018 All Rights Reserved

APACHE CORPORATION

LEASE AREA FOR THE
PALMILLO 10 STATE #233H
SECTION 10, T19S, R28E
EDDY COUNTY, NEW MEXICO

SCALE: 1"=600'	SURVEYED BY: AB/RU	JOB No.: LS18121353
DATE: 01-08-2018	DRAWN BY: CAR	DWG: 233 LEASE
REV: 01-31-2019	APPROVED BY: JLF	SHEET: 1 OF 1

SCALE: 1" = 600'

0 300' 600'

BEARINGS ARE GRID MAG. B.J.
NM EAST
DISTANCES ARE HORIZ. GROUND.

LEGEND
LEASE AREA
ALLOCATED AREA