

**NM OIL CONSERVATION
ARTESIA DISTRICT**

Intent ☒ As Drilled ☐

MAR 19 2019

API #
30-015-45792

RECEIVED

Operator Name: APACHE CORPORATION	Property Name: PALMILLO 10 STATE COM	Well Number: 234H
--------------------------------------	---	----------------------

Kick Off Point (KOP)

UL A	Section 10	Township 19S	Range 28E	Lot	Feet 660	From N/S N	Feet 100	From E/W E	County EDDY
Latitude 32.6807458					Longitude -104.1560712			NAD 83	

First Take Point (FTP)

UL A	Section 10	Township 19S	Range 28E	Lot	Feet 660	From N/S N	Feet 100	From E/W E	County EDDY
Latitude 32.6807458					Longitude -104.1560712			NAD 83	

Last Take Point (LTP)

UL D	Section 10	Township 19S	Range 28E	Lot	Feet 660	From N/S N	Feet 100	From E/W W	County EDDY
Latitude 32.6805994					Longitude -104.1722422			NAD 83	

Is this well the defining well for the Horizontal Spacing Unit? ☐

Is this well an infill well? ☐

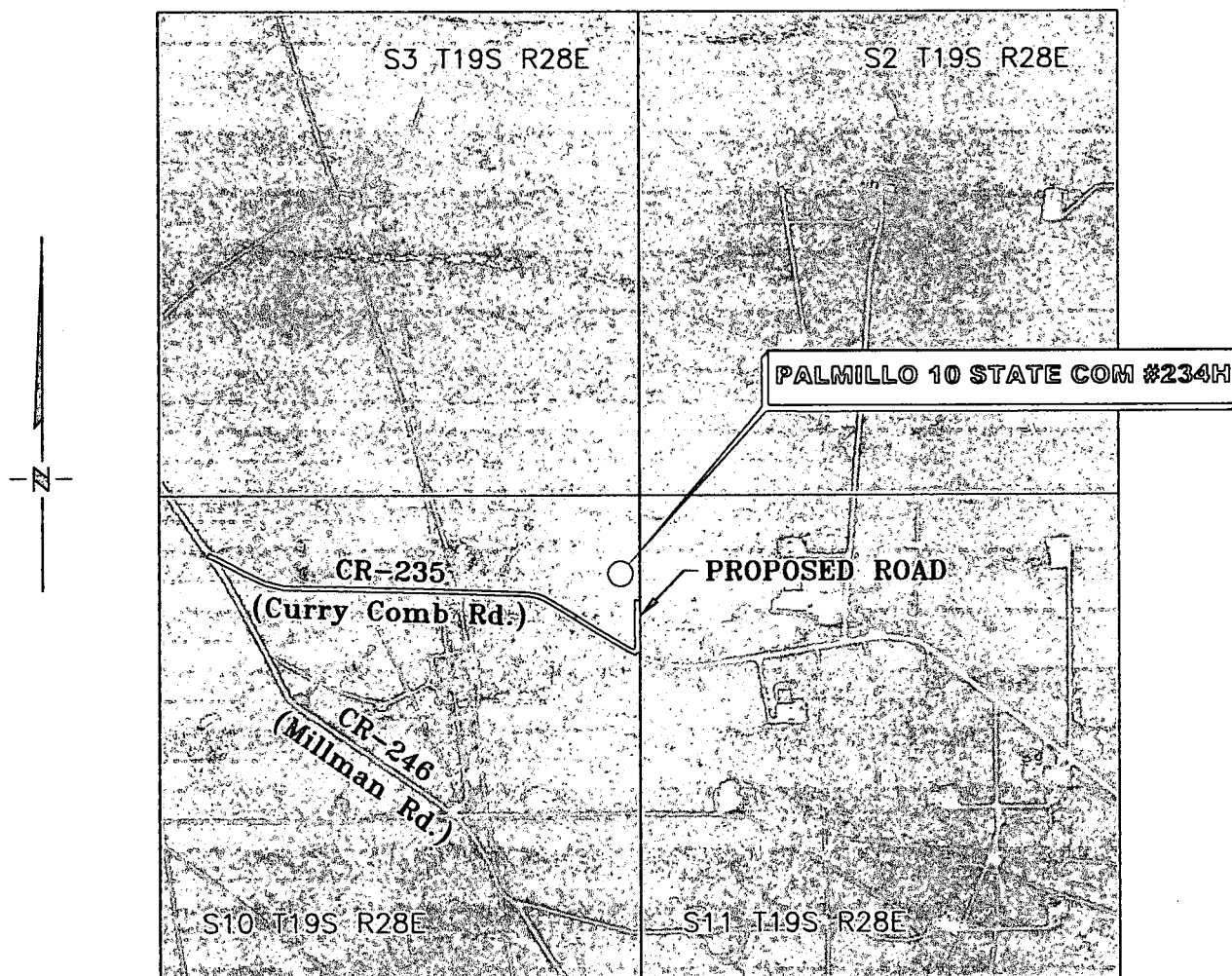
If infill is yes please provide API if available, Operator Name and well number for Defining well for Horizontal Spacing Unit.

API #	Operator Name:	Property Name:	Well Number

KZ 06/29/2018

VICINITY MAP

NOT TO SCALE



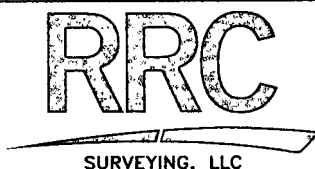
**SECTION 10, TWP. 19 SOUTH, RGE. 28 EAST,
N. M. P. M., EDDY COUNTY, NEW MEXICO**

OPERATOR: Apache Corporation
LEASE: Palmillo 10 State Com
WELL NO.: 234H

LOCATION: 850' FNL & 180' FEL
ELEVATION: 3492'

Copyright 2018 - All Rights Reserved

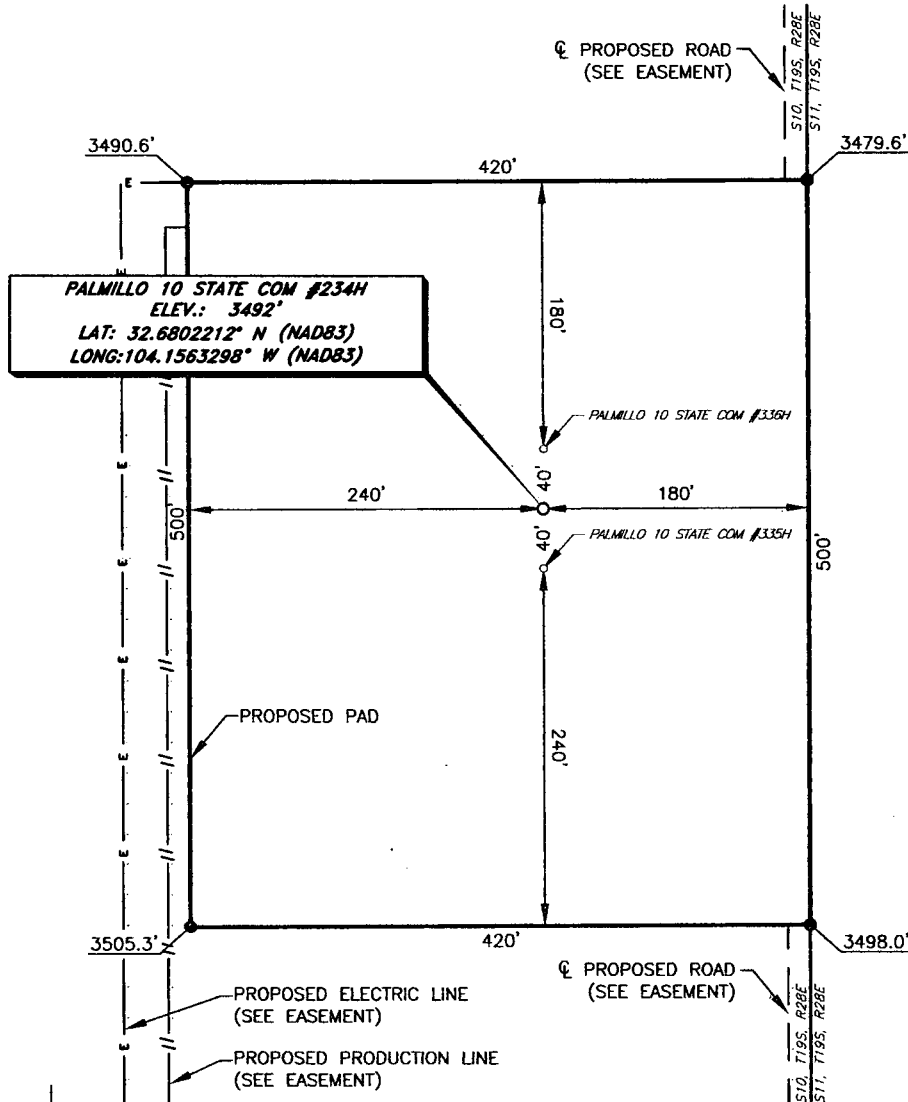
DATE: 01-08-2018		
NO.	REVISION	DATE
1		
2		
3		
4		



701 S. CECIL ST., HOBBS, NM 88240 (575) 964-8200

SCALE: 1" = 2000'
SURVEYED BY: AB/RU
DRAWN BY: CAR
APPROVED BY: JLF
JOB NO.: LS18121354
SHEET: 234 VM

APACHE CORPORATION
PALMILLO 10 STATE COM #234H
(850' FNL & 180' FEL)
SECTION 10, T19S, R28E
N. M. P. M., EDDY COUNTY, NEW MEXICO



DIRECTIONS TO LOCATION

From the intersection between CR-246 (Millman Rd.) and CR-235 (Curry Comb Rd.),
 Go Southeast on CR-235 approx. 0.9 miles to proposed road on the left;
 Go North on proposed road approx. 0.1 miles to proposed location on the left.

THIS IS NOT A BOUNDARY SURVEY, APPARENT PROPERTY CORNERS AND
 PROPERTY LINES ARE SHOWN FOR INFORMATION ONLY, BOUNDARY DATA IS
 SHOWN FROM A PREVIOUS SURVEY REFERENCED HEREON.

I, Jeffrey L. Fansler, a N. M. Professional Surveyor, hereby certify
 that I prepared this plat from an actual survey made on the
 ground under my direct supervision, said survey and plat meet
 the Min. Stds. for Land Surveying in the State of N. M. and are
 true and correct to the best of my knowledge and belief.

Jeffrey L. Fansler
 Jeffrey L. Fansler NM PS 10034



SCALE: 1" = 100'
 0 50' 100'

BEARINGS ARE GRID NAD 83
 NM EAST
 DISTANCES ARE HORIZ. GROUND.

NO.	REVISION	DATE
1		
2		
3		
4		

RRC

SURVEYING, LLC

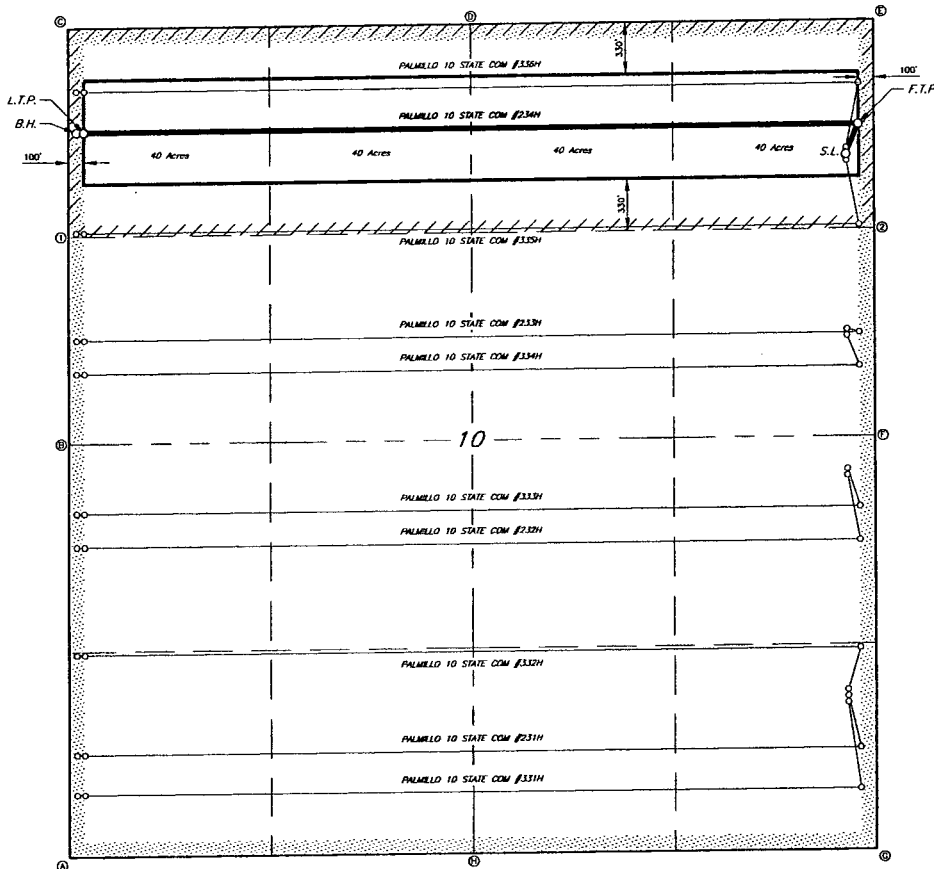
701 S. CECIL ST., HOBBS, NM 88240 (575) 964-8200

Copyright 2018 - All Rights Reserved

SCALE: 1" = 100'
SURVEYED BY: AB/RU
DRAWN BY: CAR
APPROVED BY: JLF
JOB NO.: LS18121354
SHEET: 234 PAD

RRC

SURVEYING, LLC
701 S. GEEK STREET
HOUSTON, TX 77058 (281) 964-6300



GEODETIC DATA
NAD 83 GRID - NM EAST
SURFACE LOCATION (S.L.)
N 611241.0 - E 595797.6
LAT: 32.6802212° N
LONG: 104.1563258° W
FIRST TAKE POINT (F.T.P.)
N 611432.0 - E 595876.8
LAT: 32.6807458° N
LONG: 104.1560717° W
LAST TAKE POINT (L.T.P.)
N 611370.8 - E 596001.5
LAT: 32.6805094° N
LONG: 104.1724422° W
BOTTOM HOLE (B.H.)
N 611370.2 - E 596051.5
LAT: 32.6805979° N
LONG: 104.1724046° W

CORNER DATA
NAD 83 GRID - NM EAST
A. FOUND BRASS CAP "1941"
N 605757.3 - E 590805.4
B. FOUND BRASS CAP "1941"
N 609393.2 - E 590803.6
C. FOUND BRASS CAP "1941"
N 612029.5 - E 590800.8
D. FOUND BRASS CAP "1941"
N 612060.8 - E 593367.2
E. FOUND BRASS CAP "1911"
N 612093.1 - E 595974.2
F. FOUND BRASS CAP "1941"
N 609454.0 - E 595284.6
G. FOUND BRASS CAP "1941"
N 608815.2 - E 595993.1
H. FOUND BRASS CAP "1941"
N 608785.8 - E 593400.0
CALCULATED POINTS
1: N 610711.3 - E 590802.2
2: N 610773.5 - E 595979.4

Copyright 2018 All Rights Reserved

APACHE CORPORATION

LEASE AREA FOR THE
PALMELO 10 STATE COM #234H
SECTION 10, T18S, R98E
EDDY COUNTY, NEW MEXICO

SCALE: 1"=600'	SURVEYED BY: AB/RU	JOE No.: LS18121354
DATE: 01-08-2018	DRAWN BY: CAR	DWG: 234 LEASE
REV:	APPROVED BY: JLF	SHEET: 1 OF 1