

Rw 3-20-19

**NM OIL CONSERVATION
ARTESIA DISTRICT**

Intent ☒ As Drilled ☐

MAR 21 2019

RECEIVED

API # 30-015-45795		
Operator Name: APACHE CORPORATION	Property Name: PALMILLO 10 STATE COM	Well Number 335H

Kick Off Point (KOP)

UL	Section	Township	Range	Lot	Feet	From N/S	Feet	From E/W	County
A	10	19S	28E		1296	N	100	E	EDDY
Latitude 32.6789980					Longitude -104.1560665			NAD 83	

First Take Point (FTP)

UL	Section	Township	Range	Lot	Feet	From N/S	Feet	From E/W	County
A	10	19S	28E		1296	N	100	E	EDDY
Latitude 32.6789980					Longitude -104.1560665			NAD 83	

Last Take Point (LTP)

UL	Section	Township	Range	Lot	Feet	From N/S	Feet	From E/W	County
D	10	19S	28E		1296	N	100	W	EDDY
Latitude 32.6788515					Longitude -104.1722431			NAD 83	

Is this well the defining well for the Horizontal Spacing Unit? ☐

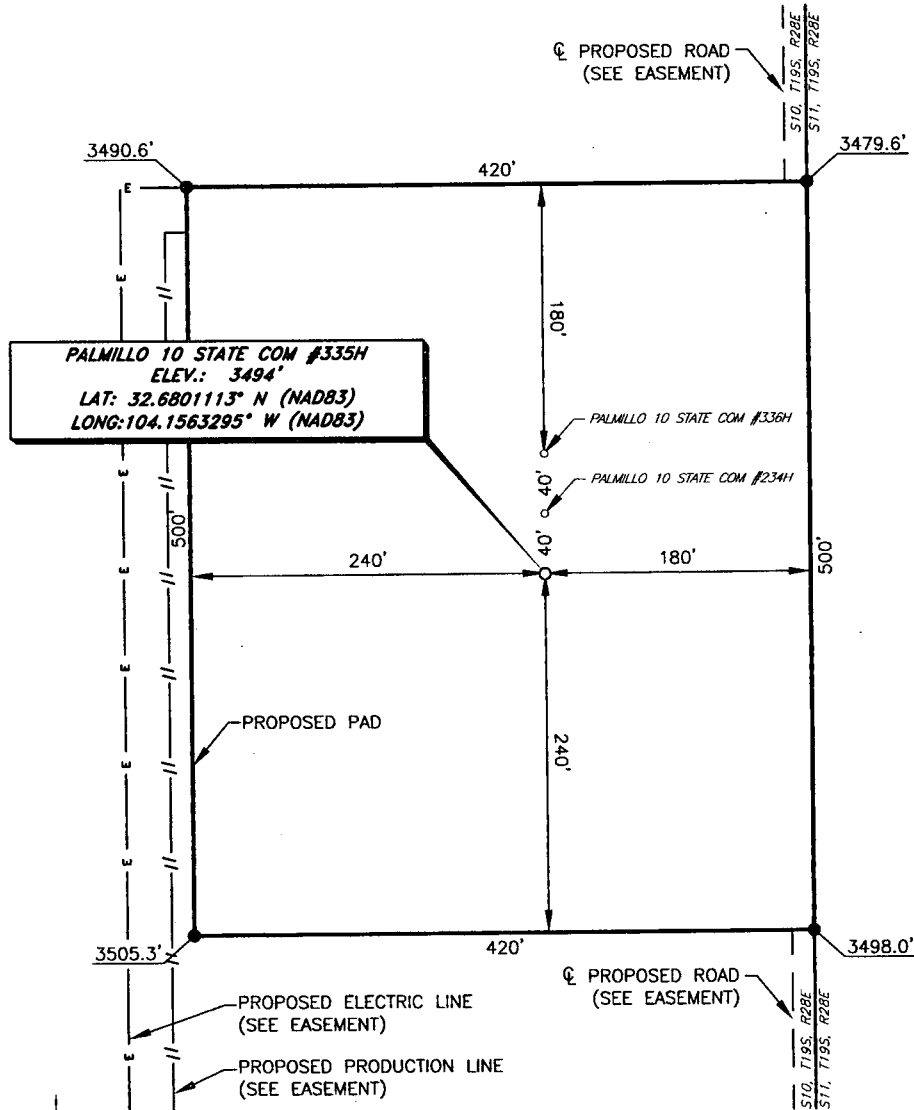
Is this well an infill well? ☐

If infill is yes please provide API if available, Operator Name and well number for Defining well for Horizontal Spacing Unit.

API #		
Operator Name:	Property Name:	Well Number

KZ 06/29/2018

APACHE CORPORATION
PALMILLO 10 STATE COM #335H
(890' FNL & 180' FEL)
SECTION 10, T19S, R28E
N. M. P. M., EDDY COUNTY, NEW MEXICO



DIRECTIONS TO LOCATION

From the intersection between CR-246 (Millman Rd.) and CR-235 (Curry Comb Rd.),
 Go Southeast on CR-235 approx. 0.9 miles to proposed road on the left;
 Go North on proposed road approx. 0.1 miles to proposed location on the left.

THIS IS NOT A BOUNDARY SURVEY, APPARENT PROPERTY CORNERS AND
 PROPERTY LINES ARE SHOWN FOR INFORMATION ONLY, BOUNDARY DATA IS
 SHOWN FROM A PREVIOUS SURVEY REFERENCED HEREON.

I, Jeffrey L. Fansler, a N. M. Professional Surveyor, hereby certify
 that I prepared this plat from an actual survey made on the
 ground under my direct supervision, said survey and plat meet
 the Min. Stds. for Land Surveying in the State of N. M. and are
 true and correct to the best of my knowledge and belief.

Jeffrey L. Fansler
 Jeffrey L. Fansler NM PS 10034



SCALE: 1" = 100'
 0 50' 100'

BEARINGS ARE GRID NAD 83
 NM EAST
 DISTANCES ARE HORIZ. GROUND.

Copyright 2018 - All Rights Reserved

NO.	REVISION	DATE
1		
2		
3		
4		

RRC

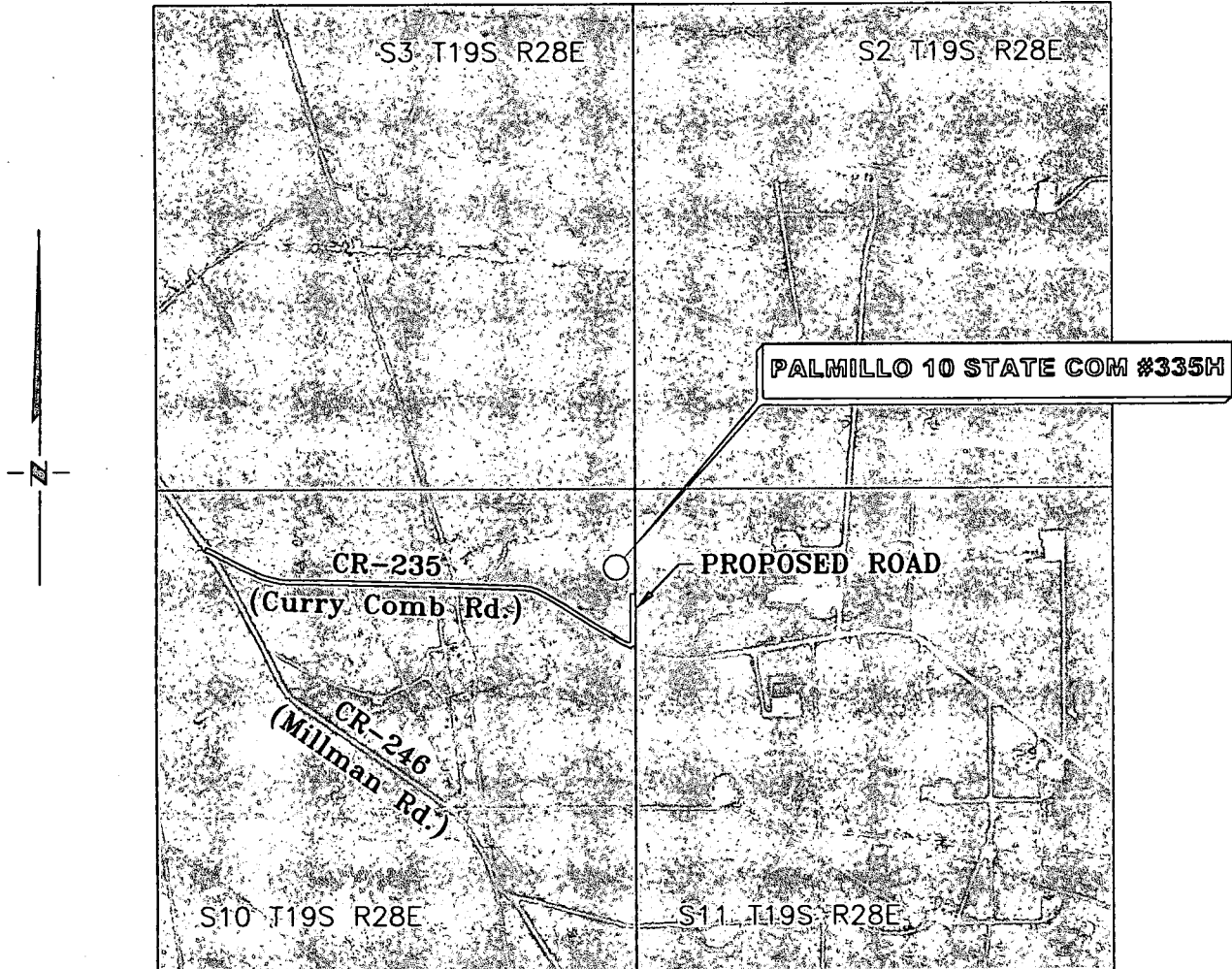
SURVEYING, LLC

701 S. CECIL ST., HOBBS, NM 88240 (575) 964-8200

SCALE: 1" = 100'
SURVEYED BY: AB/RU
DRAWN BY: CAR
APPROVED BY: JLF
JOB NO.: LS18121354
SHEET: 335 PAD

VICINITY MAP

NOT TO SCALE




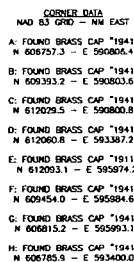
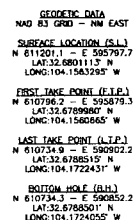
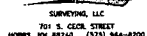
**SECTION 10, TWP. 19 SOUTH, RGE. 28 EAST,
N. M. P. M., EDDY COUNTY, NEW MEXICO**

OPERATOR: Apache Corporation
LEASE: Palmillo 10 State Com
WELL NO.: 335H

LOCATION: 890' FNL & 180' FEL
ELEVATION: 3494'

Copyright 2018 - All Rights Reserved

DATE: 01-08-2018			 SURVEYING, LLC 701 S. CECIL ST., HOBBS, NM 88240 (575) 964-8200	SCALE: 1" = 2000'	
NO.	REVISION	DATE		SURVEYED BY: AB/RU	
1				DRAWN BY: CAR	
2				APPROVED BY: JLF	
3				JOB NO.: LS18121354	
4				SHEET: 335 VM	



CALCULATED POINTS

1: N 610711.3 - E 590802.2
2: N 610773.5 - E 595979.4

Copyright 2018 All Rights Reserved

APACHE CORPORATION

LEASE AREA FOR THE
PALMILLO 10 STATE COM #335.
SECTION 10, T19S, R28E
EDDY COUNTY, NEW MEXICO

SCALE: 1"=600'	SURVEYED BY: AB/RU	JOB No.: LST18121354
DATE: 01-08-2018	DRAWN BY: CAR	DWG: 335 LEASE
REV:	APPROVED BY: JLF	SHEET: 1 OF 1

SCALE: 1"=600'	SURVEYED BY: AB/RU	JOB No.: LSTB121334
DATE: 01-08-2018	DRAWN BY: CAR	DWG: 335 LEASE
REV:	APPROVED BY: JLF	SHEET: 1 OF 1