

MAR 19 2019

Intent ☒ As Drilled ☐

RECEIVED

API # 30-015-45801		
Operator Name: APACHE CORPORATION	Property Name: PALMILLO 3 STATE COM	Well Number 243H

Kick Off Point (KOP)

UL H	Section 3	Township 19S	Range 28E	Lot	Feet 1794	From N/S N	Feet 100	From E/W E	County EDDY
Latitude 32.6921741					Longitude -104.1559482			NAD 83	

First Take Point (FTP)

UL H	Section 3	Township 19S	Range 28E	Lot	Feet 1794	From N/S N	Feet 100	From E/W E	County EDDY
Latitude 32.6921741					Longitude -104.1559482			NAD 83	

Last Take Point (LTP)

UL E	Section 3	Township 19S	Range 28E	Lot	Feet 1794	From N/S N	Feet 100	From E/W W	County EDDY
Latitude 32.6920155					Longitude -104.1721269			NAD 83	

Is this well the defining well for the Horizontal Spacing Unit? ☐

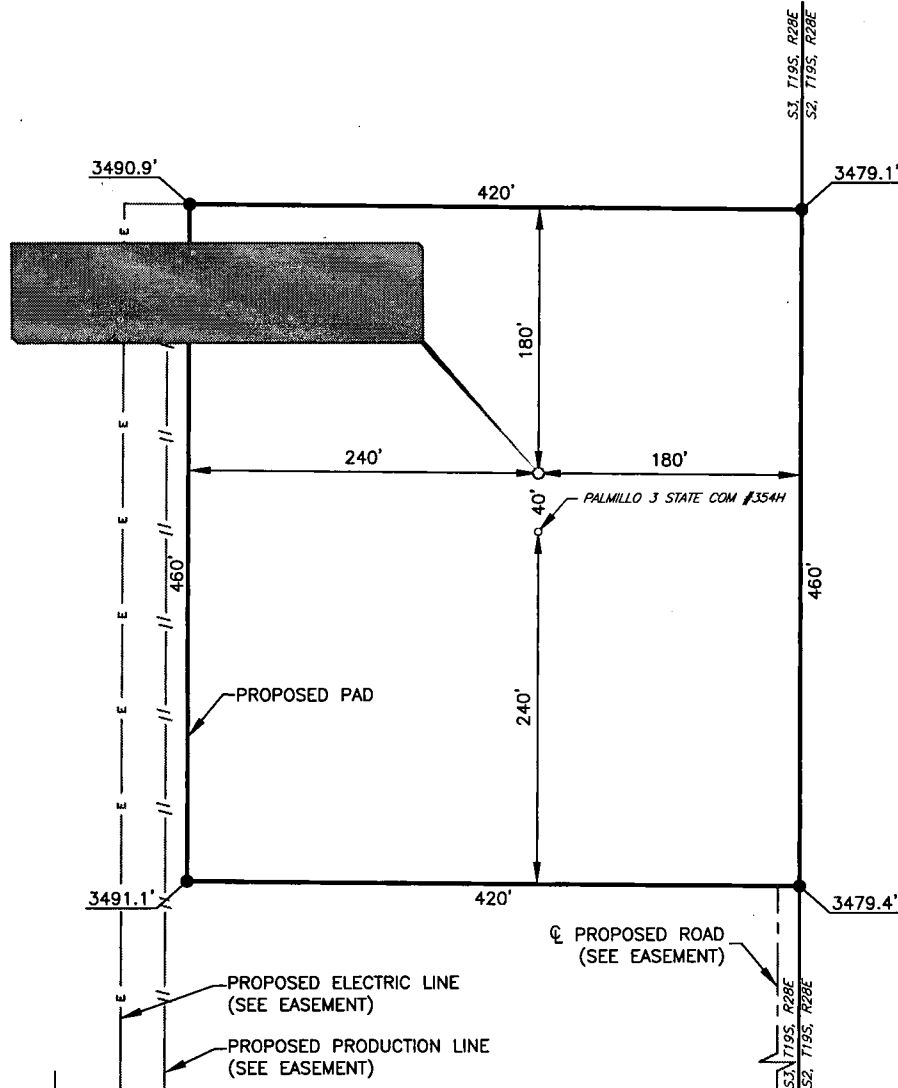
Is this well an infill well? ☐

If infill is yes please provide API if available, Operator Name and well number for Defining well for Horizontal Spacing Unit.

API #		
Operator Name:	Property Name:	Well Number

KZ 06/29/2018

APACHE CORPORATION
PALMILLO 3 STATE COM #243H
(2050' FNL & 180' FEL)
SECTION 3, T19S, R28E
N. M. P. M., EDDY COUNTY, NEW MEXICO



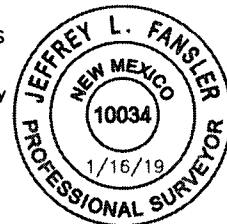
DIRECTIONS TO LOCATION

*From the intersection between CR-246 (Millman Rd.) and CR-235 (Curry Comb Rd.),
 Go Southeast on CR-235 approx. 0.9 miles to proposed road on the left;
 Go North on proposed road approx. 0.9 miles to proposed location on the left.*

THIS IS NOT A BOUNDARY SURVEY, APPARENT PROPERTY CORNERS AND
 PROPERTY LINES ARE SHOWN FOR INFORMATION ONLY, BOUNDARY DATA IS
 SHOWN FROM A PREVIOUS SURVEY REFERENCED HEREON.

I, Jeffrey L. Fansler, a N. M. Professional Surveyor, hereby certify
 that I prepared this plat from an actual survey made on the
 ground under my direct supervision, said survey and plat meet
 the Min. Stds. for Land Surveying in the State of N. M. and are
 true and correct to the best of my knowledge and belief.

Jeffrey L. Fansler
 Jeffrey L. Fansler NM PS 10034



SCALE: 1" = 100'
 0 50' 100'

BEARINGS ARE GRID NAD 83
 NM EAST
 DISTANCES ARE HORIZ. GROUND.

Copyright 2018 - All Rights Reserved

DATE: 01-08-2018		
NO.	REVISION	DATE
1		
2		
3		
4		

RRC

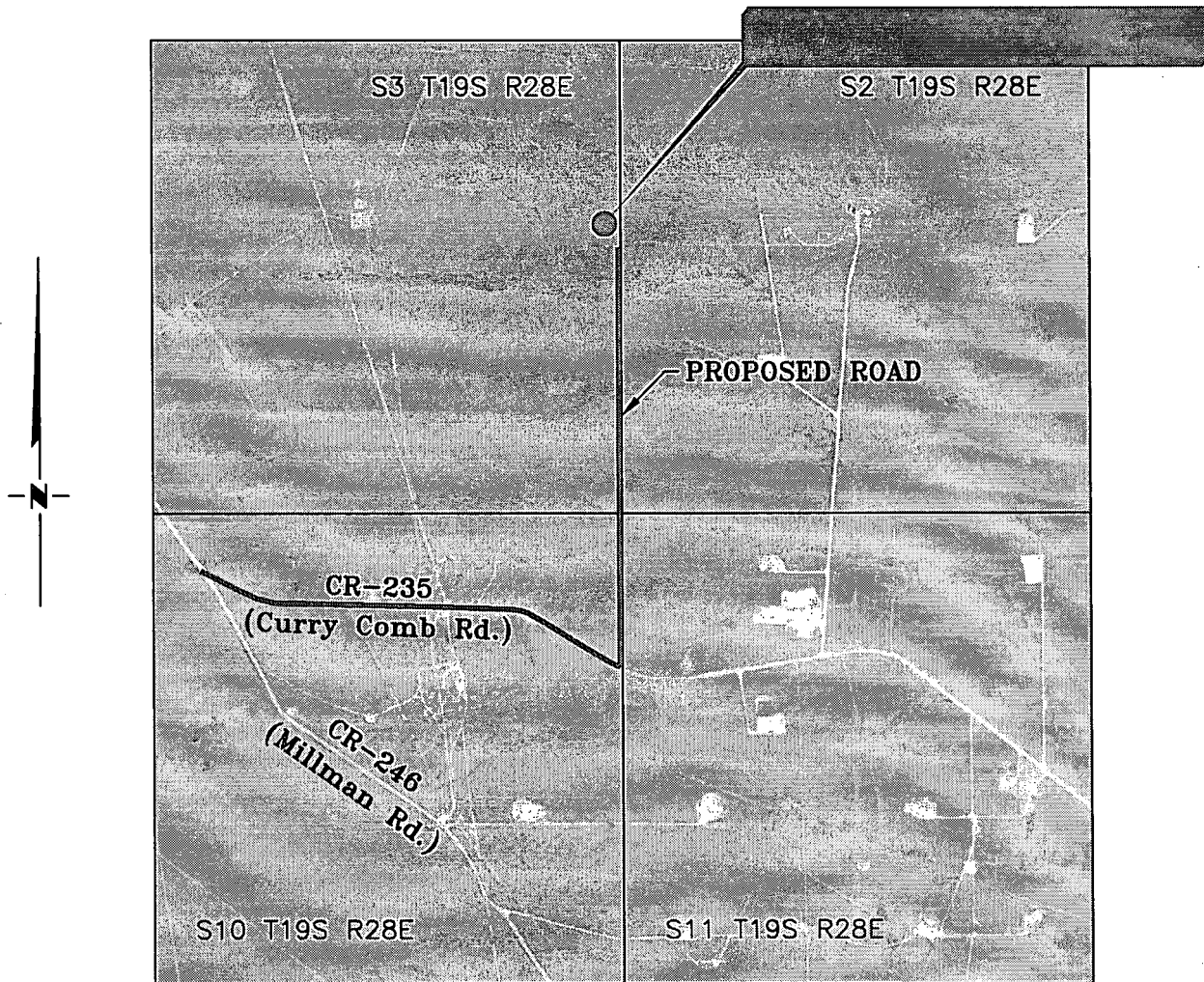
SURVEYING, LLC

701 S. CECIL ST., HOBBS, NM 88240 (575) 964-8200

SCALE:	1" = 100'
SURVEYED BY:	AB/RU
DRAWN BY:	CAR
APPROVED BY:	JLF
JOB NO.:	LS18121355
SHEET:	243 PAD

VICINITY MAP

NOT TO SCALE



**SECTION 3, TWP. 19 SOUTH, RGE. 28 EAST,
N. M. P. M., EDDY COUNTY, NEW MEXICO**

OPERATOR: Apache Corporation
LEASE: Palmillo 3 State Com
WELL NO.: 243H

LOCATION: 2050' FNL & 180' FEL
ELEVATION: 3583'

Copyright 2018 - All Rights Reserved

DATE: 01-08-2018

NO.	REVISION	DATE
1		
2		
3		
4		

RRC

SURVEYING, LLC

701 S. CECIL ST., HOBBS, NM 88240 (575) 964-8200

SCALE: 1" = 2000'

SURVEYED BY: AB/RU

DRAWN BY: CAR

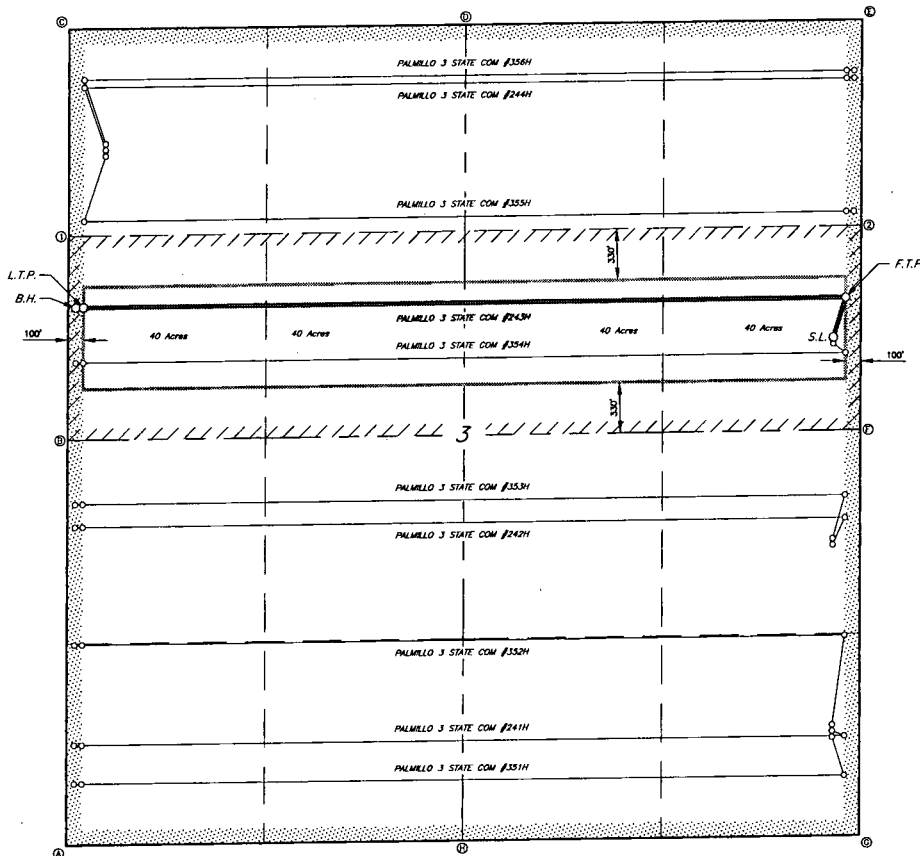
APPROVED BY: JLF

JOB NO.: LS18121355

SHEET: 243 VM

RRC

SURVEYING, L.L.C.
701 S. GARCIA STREET
HOUSTON, TEXAS 77002 (713) 864-8700



GEODETIC DATA
NAD 83 GRID - NM EAST
SURFACE LOCATION (S.L.)
N 815331.8 - E 595825.4
LAT:32.8914553° N
LONG:104.1562173° W
FIRST TAKE POINT (F.T.P.)
N 815588.8 - E 595907.7
LAT:32.8921714° N
LONG:104.1556467° W
LAST TAKE POINT (L.T.P.)
N 815524.2 - E 595930.8
LAT:32.8920155° N
LONG:104.1721289° W
BOTTOM HOLE (B.H.)
N 815523.5 - E 595880.8
LAT:32.8920139° N
LONG:104.1722894° W

CORNER DATA
NAD 83 GRID - NM EAST
A: FOUND BRASS CAP "1941"
N 812028.5 - E 590800.8
B: FOUND BRASS CAP "1941"
N 814855.5 - E 590822.7
C: FOUND BRASS CAP "1941"
N 817318.8 - E 590847.2
D: FOUND BRASS CAP "1941"
N 817350.7 - E 593438.5
E: FOUND BRASS CAP "1941"
N 817384.0 - E 598024.3
F: FOUND BRASS CAP "1941"
N 814733.6 - E 595999.8
G: FOUND BRASS CAP "1911"
N 812093.1 - E 595974.2
H: FOUND BRASS CAP "1941"
N 812080.8 - E 593387.2
CALCULATED POINTS
1: N 815883.6 - E 590834.9
2: N 816051.9 - E 595012.0

Copyright 2018 All Rights Reserved

APACHE CORPORATION

LEASE AREA FOR THE
PALMILLO 3 STATE COM #243H
SECTION 3, T19S, R28E
EDDY COUNTY, NEW MEXICO

SCALE: 1"=800' SURVEYED BY: AS/RU JOB No.: LS18121355
DATE: 01-08-2018 DRAWN BY: CAR DWG: 243 LEASE
REV: APPROVED BY: JLF SHEET: 1 OF 1

SCALE: 1" = 800'

0 300' 600'

BEARINGS ARE GRID MAG NAD 83
DISTANCES ARE HORIZ. GROUND.

LEGEND:

----- LEASE AREA

////// ALLOCATED AREA