

DISTRICT I
1625 N. French Dr., Hobbs, NM 88240
Phone: (575) 393-6161 Fax: (575) 393-0720

DISTRICT II
811 S. First St., Artesia, NM 88210
Phone: (575) 748-1283 Fax: (575) 748-9720

DISTRICT III
1000 Rio Brazos Road, Aztec, NM 87410
Phone: (505) 334-6178 Fax: (505) 334-6170

DISTRICT IV
1220 S. St. Francis Dr., Santa Fe, NM 87505
Phone: (505) 476-3460 Fax: (505) 476-3462

State of New Mexico
Energy, Minerals & Natural Resources Department
OIL CONSERVATION DIVISION
1220 South St. Francis Dr.
Santa Fe, New Mexico 87505

Form C-102
Revised August 1, 2011
Submit one copy to appropriate
District Office

AMENDED REPORT

WELL LOCATION AND ACREAGE DEDICATION PLAT

API Number 30-015- 45930	Pool Code 97565	Pool Name N. SEVEN RIVERS; GLORIETA-YESO
Property Code 317237	Property Name DORAMI 33 FED COM	Well Number 10H
OGRID No. 371755	Operator Name PERCUSSION PETROLEUM OPERATING, LLC	Elevation 3528'

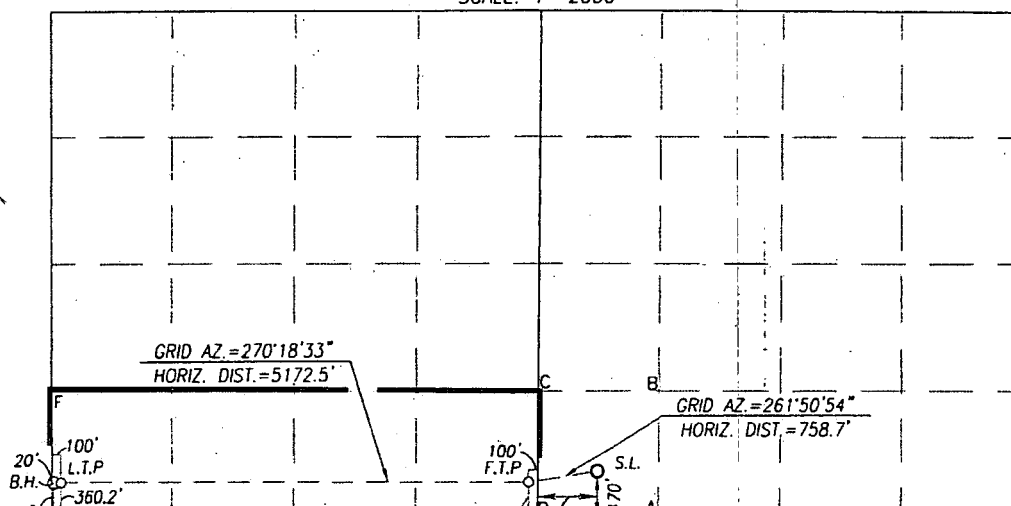
Surface Location									
UL or lot No.	Section	Township	Range	Lot Idn	Feet from the	North/South line	Feet from the	East/West line	County
M	34	19-S	25-E		470	SOUTH	650	WEST	EDDY

Bottom Hole Location if Different From Surface									
UL or lot No.	Section	Township	Range	Lot Idn	Feet from the	North/South line	Feet from the	East/West line	County
M	33	19-S	25-E		360	SOUTH	20	WEST	EDDY

Dedicated Acres	Joint or Infill	Consolidation Code	Order No.
160		C	

NO ALLOWABLE WILL BE ASSIGNED TO THIS COMPLETION UNTIL ALL INTERESTS HAVE BEEN CONSOLIDATED OR A NON-STANDARD UNIT HAS BEEN APPROVED BY THE DIVISION

SCALE: 1"=2000'



OPERATOR CERTIFICATION

I hereby certify that the information herein is true and complete to the best of my knowledge and belief, and that this organization either owns a working interest or unleased mineral interest in the land including the proposed bottom hole location or has a right to drill this well at this location pursuant to a contract with an owner of such mineral or working interest, or to a voluntary pooling agreement or a compulsory pooling order heretofore entered by the division.

Signature: *Brian Wood* Date: 12-30-18
Printed Name: BRIAN WOOD
E-mail Address: brian@permitswest.com
E-mail Address: 505 466-8120

SURVEYOR CERTIFICATION

I hereby certify that the well location shown on this plat was plotted from field notes of actual surveys made by me or under my supervision, and that the same is true and correct to the best of my belief.

AUGUST 21, 2018

Date of Survey: 10/25/2018
Signature & Seal of Professional Surveyor:



Certificate Number: 12641
Ronald J. Eidson 3239

LSL Rev. 10/25/18 JWSC W.O.: 18.11.0962

BOTTOM HOLE LOCATION
NAD 27 NME
Y= 585906.6 N
X= 449343.8 E
LAT.=32.610654' N
LONG.=104.497843' W

LAST TAKE POINT
NAD 27 NME
Y= 585906.2 N
X= 449423.8 E
LAT.=32.610653' N
LONG.=104.497583' W

FIRST TAKE POINT
NAD 27 NME
Y= 585878.6 N
X= 454514.8 E
LAT.=32.610598' N
LONG.=104.481050' W

GEODETIC COORDINATES
NAD 27 NME
SURFACE LOCATION
Y= 585986.2 N
X= 455265.6 E
LAT.=32.610896' N
LONG.=104.478612' W

BOTTOM HOLE LOCATION
NAD 83 NME
Y= 585967.1 N
X= 490522.1 E
LAT.=32.610767' N
LONG.=104.498363' W

LAST TAKE POINT
NAD 83 NME
Y= 585966.7 N
X= 490602.1 E
LAT.=32.610766' N
LONG.=104.498104' W

FIRST TAKE POINT
NAD 83 NME
Y= 585939.2 N
X= 495693.2 E
LAT.=32.610711' N
LONG.=104.481569' W

GEODETIC COORDINATES
NAD 83 NME
SURFACE LOCATION
Y= 586046.8 N
X= 496444.1 E
LAT.=32.611009' N
LONG.=104.479131' W

CORNER COORDINATES TABLE
NAD 27 NME

A - Y= 585514.1 N, X= 455932.2 E
B - Y= 586855.2 N, X= 455945.6 E
C - Y= 586859.8 N, X= 454623.7 E
D - Y= 585518.4 N, X= 454611.4 E
E - Y= 585546.8 N, X= 449323.1 E
F - Y= 586882.5 N, X= 449325.7 E

CORNER COORDINATES TABLE
NAD 83 NME

A - Y= 585574.7 N, X= 497110.7 E
B - Y= 586915.8 N, X= 497124.1 E
C - Y= 586920.4 N, X= 495802.2 E
D - Y= 585579.0 N, X= 495789.9 E
E - Y= 585607.4 N, X= 490501.4 E
F - Y= 586943.0 N, X= 490504.0 E

Ref 4-26-19