

District I  
1625 N. French Dr., Hobbs, NM 88240  
Phone: (575) 393-6161 Fax: (575) 393-0720  
District II  
811 S. First St., Artesia, NM 88210  
Phone: (575) 748-1283 Fax: (575) 748-9720  
District III  
1000 Rio Brazos Road, Aztec, NM 87410  
Phone: (505) 334-6178 Fax: (505) 334-6170  
District IV  
1220 S. St. Francis Dr., Santa Fe, NM 87505  
Phone: (505) 476-3460 Fax: (505) 476-3462

State of New Mexico  
Energy, Minerals & Natural Resources Department  
OIL CONSERVATION DIVISION  
1220 South St. Francis Dr.  
Santa Fe, NM 87505

Form C-102  
Revised August 1, 2011  
Submit one copy to appropriate  
District Office

☐ AMENDED REPORT

WELL LOCATION AND ACREAGE DEDICATION PLAT

1 API Number 30-015-44075	2 Pool Code 98220	3 Pool Name Purple Sage Wolfcamp (Gas)
4 Property Code 317465	5 Property Name VIPER 32/29 W2PI FED COM	
7 OGRID NO. 14744	8 Operator Name MEWBOURNE OIL COMPANY	6 Well Number 1H
		9 Elevation 3229'

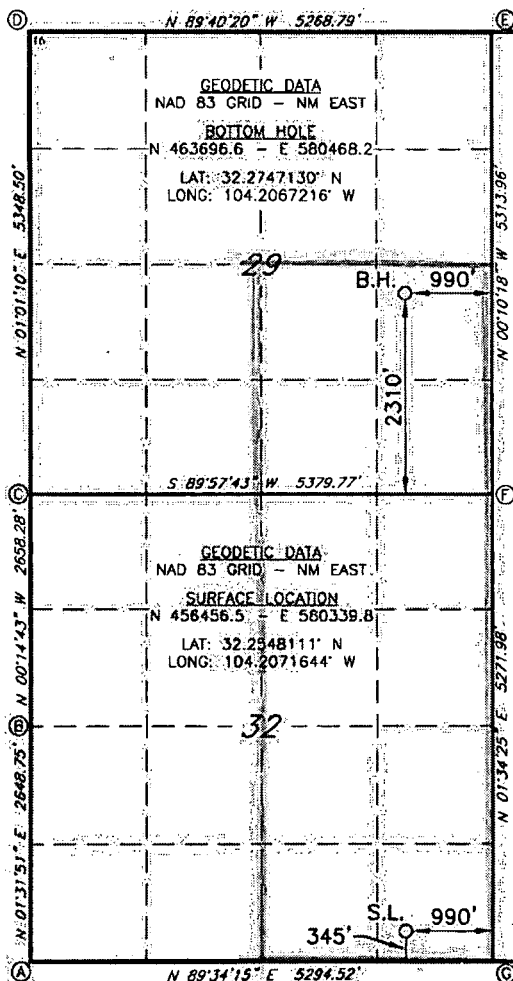
10 Surface Location

UL or lot no. P	Section 32	Township 23S	Range 27E	Lot Idn	Feet from the 345	North/South line SOUTH	Feet from the 990	East/West line EAST	County EDDY
--------------------	---------------	-----------------	--------------	---------	----------------------	---------------------------	----------------------	------------------------	----------------

11 Bottom Hole Location If Different From Surface

UL or lot no. I	Section 29	Township 23S	Range 27E	Lot Idn	Feet from the 2310	North/South line SOUTH	Feet from the 990	East/West line EAST	County EDDY
12 Dedicated Acres 480	13 Joint or Infill	14 Consolidation Code	15 Order No.						

No allowable will be assigned to this completion until all interest have been consolidated or a non-standard unit has been approved by the division.



17 OPERATOR CERTIFICATION

I hereby certify that the information contained herein is true and complete to the best of my knowledge and belief, and that this organization either owns a working interest or unleased mineral interest in the land including the proposed bottom hole location or has a right to drill this well at this location pursuant to a contract with an owner of such a mineral or working interest, or to a voluntary pooling agreement or a compulsory pooling order heretofore entered by the division.

Signature: Jackie Lathan  
Date: 2-26-19  
Printed Name: Jackie Lathan

E-mail Address

18 SURVEYOR CERTIFICATION

I hereby certify that the well location shown on this plat was plotted from field notes of actual surveys made by me or under my supervision, and that the same is true and correct to the best of my belief.

2-26-19

Date of Survey

Signature and Seal of Professional Surveyor  
19880  
Certificate Number

RRC - Job No.: LS1507347R