

APR 12 2019

Form C-102

State of New Mexico
Energy, Minerals & Natural Resources Department
OIL CONSERVATION DIVISION
1220 South St. Francis Dr.
Santa Fe, NM 87505

RECEIVED Revised August 1, 2011
Submit one copy to appropriate
District Office

☒ AMENDED REPORT
As-Drilled

District I
1625 N. French Dr., Hobbs, NM 88240
Phone: (575) 393-6161 Fax: (575) 393-0720
District II
811 S. First St., Artesia, NM 88210
Phone: (575) 745-1283 Fax: (575) 745-9720
District III
1000 Rio Bravo Road, Aztec, NM 87410
Phone: (505) 334-6178 Fax: (505) 334-6170
District IV
1220 S. St. Francis Dr., Santa Fe, NM 87505
Phone: (505) 476-3460 Fax: (505) 476-3462

WELL LOCATION AND ACREAGE DEDICATION PLAT

API Number 30-015-45522	Pool Code 90236	Pool Name WILDCAT WOLF CAMP
Property Code 314055	Property Name CAL-MON "35" FEDERAL	Well Number 173H
OGRID No. 16696	Operator Name OXY USA INC.	Elevation 3462.5'

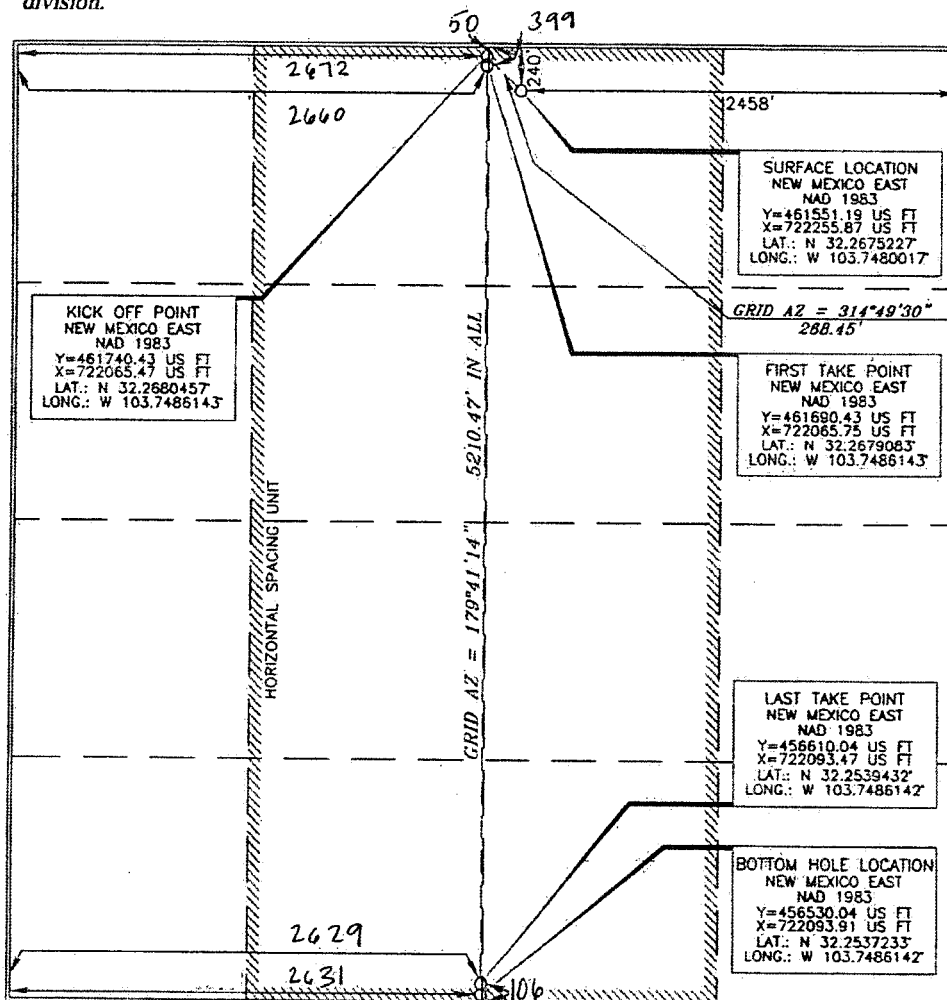
Surface Location

UL or lot no.	Section	Township	Range	Lot Idn	Feet from the	North/South line	Feet from the	East/West line	County
B	35	23 SOUTH	31 EAST, N.M.P.M.		240'	NORTH	2458'	EAST	EDDY

Bottom Hole Location If Different From Surface

UL or lot no.	Section	Township	Range	Lot Idn	Feet from the	North/South line	Feet from the	East/West line	County
N	35	23 SOUTH	31 EAST, N.M.P.M.		20	SOUTH	2631	WEST	EDDY
Dedicated Acres 32.0		Joint or Infill	Consolidation Code	Order No.					

No allowable will be assigned to this completion until all interests have been consolidated or a non-standard unit has been approved by the division.



OPERATOR CERTIFICATION

I hereby certify that the information contained herein is true and complete to the best of my knowledge and belief, and that this organization either owns a working interest or undivided mineral interest in the land including the proposed bottom hole location or has a right to drill this well at this location pursuant to a contract with an owner of such a mineral or working interest, or to a voluntary pooling agreement or a compulsory pooling order heretofore entered by the division.

Joseph Chapman 4/5/19
Signature Date
Joseph Chapman
Printed Name
jchapman@oxy.com
E-mail Address

SURVEYOR CERTIFICATION

I hereby certify that the well location shown on this plat was plotted from field notes of actual surveys made by me or under my supervision, and that the same is true and correct to the best of my belief.

DATE
FEBRUARY 13, 2016
Date of Survey
Signature and Seal of Professional Surveyor
15079

Long J. Paul 12/24/2018
Certificate Number 15079