

RECEIVED

APR 26 2019

DISTRICT I  
1625 N. FRANKLIN DR., HOBBBS, NM 88240  
Phone: (505) 393-8181 Fax: (505) 393-0720

DISTRICT II  
811 S. FIRST ST., ARTESIA, NM 88210  
Phone: (505) 748-1283 Fax: (505) 748-0720

DISTRICT III  
1000 RIO BRAZOS RD., AZTEC, NM 87410  
Phone: (505) 334-8178 Fax: (505) 334-8170

DISTRICT IV  
1220 S. ST. FRANCIS DR., SANTA FE, NM 87505  
Phone: (505) 476-3460 Fax: (505) 476-3462

State of New Mexico  
Energy, Minerals & Natural Resources Department  
**OIL CONSERVATION DIVISION**  
1220 SOUTH ST. FRANCIS DR.  
Santa Fe, New Mexico 87505

DISTRICT II-ARTESIA O.C.D. Form C-102  
Revised August 1, 2011  
Submit one copy to appropriate  
District Office

☐ AMENDED REPORT

**WELL LOCATION AND ACREAGE DEDICATION PLAT**

API Number <b>30-015-45941</b>	Pool Code <b>53805</b>	Pool Name <b>SAND Dunes BSP6 South</b>
Property Code <b>3522</b>	Property Name <b>TODD 36 STATE</b>	Well Number <b>335H</b>
OGRID No. <b>6137</b>	Operator Name <b>DEVON ENERGY PRODUCTION COMPANY, L.P.</b>	Elevation <b>3516.9'</b>

**Surface Location**

UL or lot No.	Section	Township	Range	Lot Idn	Feet from the	North/South line	Feet from the	East/West line	County
M	36	23-S	31-E		180	SOUTH	455	WEST	EDDY

**Bottom Hole Location If Different From Surface**

UL or lot No.	Section	Township	Range	Lot Idn	Feet from the	North/South line	Feet from the	East/West line	County
D	36	23-S	31-E		20	NORTH	730	WEST	EDDY

Dedicated Acres	Joint or Infill	Consolidation Code	Order No.
320			

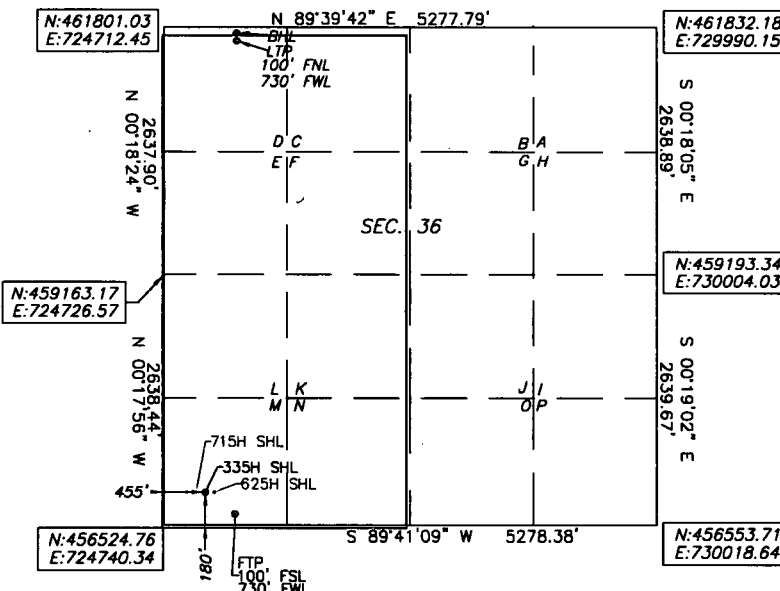
**NO ALLOWABLE WILL BE ASSIGNED TO THIS COMPLETION UNTIL ALL INTERESTS HAVE BEEN CONSOLIDATED OR A NON-STANDARD UNIT HAS BEEN APPROVED BY THE DIVISION**

**TODD 36 STATE 335H**  
ELEV: 3516.9'  
LAT: 32.254164  
LONG: -103.738582  
N: 456707.26  
E: 725194.39

**BOTTOM OF HOLE**  
LAT: 32.268118  
LONG: -103.737688  
N: 461785.34  
E: 725442.54

**FIRST TAKE POINT**  
LAT: 32.253944  
LONG: -103.737692  
N: 456628.76  
E: 725469.81

**LAST TAKE POINT**  
LAT: 32.267898  
LONG: -103.737688  
N: 461705.34  
E: 725442.97



Note: All bearings recited herein are based on the New Mexico State Plane Coordinate System, NAD 83, New Mexico East Zone 3001, US Survey Feet, all distances are grid.

**OPERATOR CERTIFICATION**

I hereby certify that the information herein is true and complete to the best of my knowledge and belief, and that this organization either owns a working interest or unless mineral interest in the land including the proposed bottom hole location or has a right to drill this well at this location pursuant to a contract with an owner of such mineral or working interest, or to a voluntary pooling agreement or a compulsory pooling order heretofore entered by the division.

*Jenny Harms* 4-23-2019

Signature Date

**JENNY HARMS**

Printed Name

**JENNY.HARMS@DVN.COM**

E-mail Address

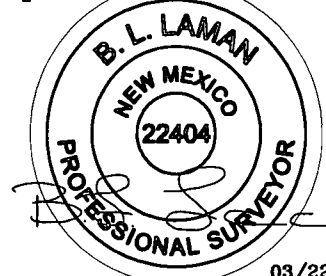
**SURVEYOR CERTIFICATION**

I hereby certify that the well location shown on this plat was plotted from field notes of actual surveys made by me or under my supervision, and that the same is true and correct to the best of my belief.

3/2019

Date of Survey

Signature & Seal of Professional Surveyor



03/22/19

Certificate No. 22404

B.L. LAMAN

DRAWN BY: C.MAS 3/18/19

REV: CM 3/20/19

*Rup 4-30-19*