

RECEIVED

District I
1625 N. French Dr., Hobbs, NM 88240
Phone: (575) 393-6161 Fax: (575) 393-0720
District II
811 S. First St., Artesia, NM 88210
Phone: (575) 748-1283 Fax: (575) 748-9720
District III
1000 Rio Brazos Road, Aztec, NM 87410
Phone: (505) 334-6178 Fax: (505) 334-6170
District IV
1220 S. St. Francis Dr., Santa Fe, NM 87505
Phone: (505) 476-3460 Fax: (505) 476-3462

State of New Mexico
Energy, Minerals & Natural Resources Department
OIL CONSERVATION DIVISION
1220 South St. Francis Dr.
Santa Fe, NM 87505

MAY 07 2019

Form C-102
Revised August 1, 2011
Submit one copy to appropriate
District Office

☐ AMENDED REPORT

WELL LOCATION AND ACREAGE DEDICATION PLAT

¹ API Number 30-015 45976	² Pool Code 98220	³ Pool Name Purple Sage Wolfcamp (Gas)
⁴ Property Code 321482	⁵ Property Name RIVERBEND 12-13 FEDERAL COM	
⁷ OGRID No. 215099	⁸ Operator Name CIMAREX ENERGY CO.	⁶ Well Number 35H ⁹ Elevation 2937.7

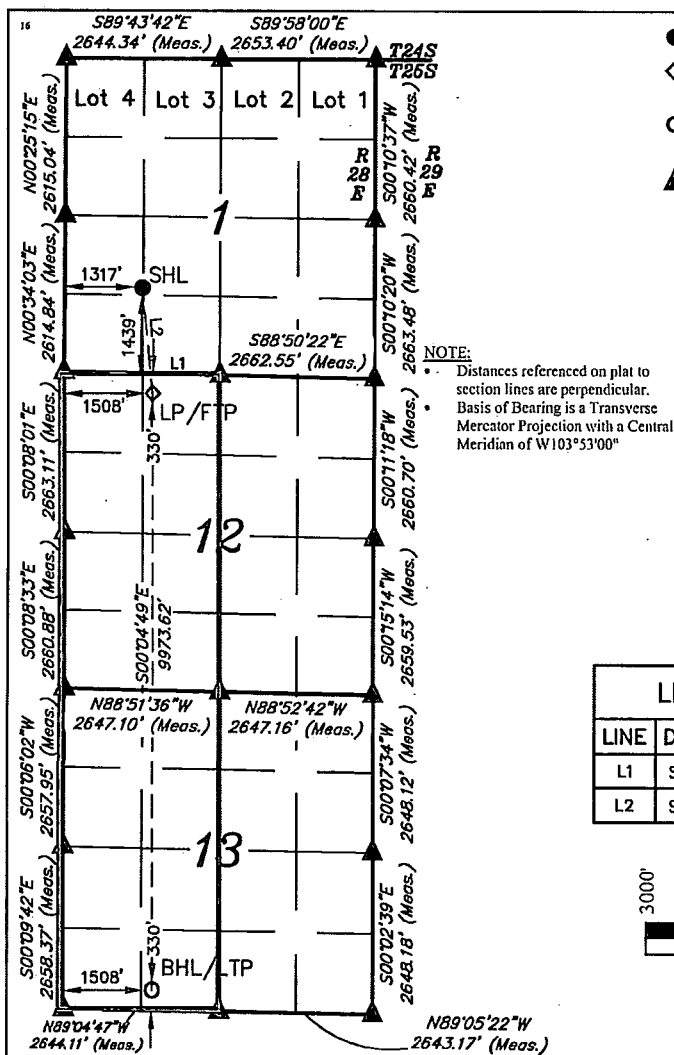
¹⁰ Surface Location

UL or lot no. L	Section 1	Township 25S	Range 28E	Lot Idn	Feet from the 1439	North/South line SOUTH	Feet from the 1317	East/West line WEST	County EDDY
--------------------	--------------	-----------------	--------------	---------	-----------------------	---------------------------	-----------------------	------------------------	----------------

¹¹ Bottom Hole Location If Different From Surface

UL or lot no. N	Section 13	Township 25S	Range 28E	Lot Idn	Feet from the 330	North/South line SOUTH	Feet from the 1508	East/West line WEST	County EDDY
¹² Dedicated Acres 640	¹³ Joint or Infill	¹⁴ Consolidation Code	¹⁵ Order No.						

No allowable will be assigned to this completion until all interests have been consolidated or a non-standard unit has been approved by the division.



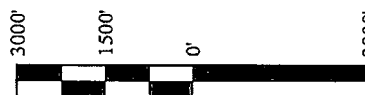
- = SURFACE HOLE LOCATION
- ◇ = LANDING POINT/FIRST TAKE POINT
- = BOTTOM HOLE LOCATION/ LAST TAKE POINT
- ▲ = SECTION CORNER LOCATED

NAD 83 (SURFACE HOLE LOCATION)
LATITUDE = 32°09'21.62" (32.156005°)
LONGITUDE = 104°02'42.69" (104.045193°)
NAD 27 (SURFACE HOLE LOCATION)
LATITUDE = 32°09'21.18" (32.155882°)
LONGITUDE = 104°02'40.93" (104.044704°)
STATE PLANE NAD 83 (N.M. EAST)
N: 420609.13' E: 630506.16'
STATE PLANE NAD 27 (N.M. EAST)
N: 420550.86' E: 589322.00'

NAD 83 (BHL/TP)
LATITUDE = 32°07'25.40" (32.123723°)
LONGITUDE = 104°02'40.26" (104.044518°)
NAD 27 (BHL/TP)
LATITUDE = 32°07'24.96" (32.123599°)
LONGITUDE = 104°02'38.51" (104.044030°)
STATE PLANE NAD 83 (N.M. EAST)
N: 408866.13' E: 630746.69'
STATE PLANE NAD 27 (N.M. EAST)
N: 408808.08' E: 589562.26'

LINE TABLE

LINE	DIRECTION	LENGTH
L1	S88°49'54"E	2665.14'
L2	S05°43'08"E	1781.72'



SCALE

DRAWN BY: D.J.S. 11-07-18

¹⁷ OPERATOR CERTIFICATION

I hereby certify that the information contained herein is true and complete to the best of my knowledge and belief, and that this organization either owns a working interest or unleased mineral interest in the land including the proposed bottom hole location or has a right to drill this well at this location pursuant to a contract with an owner of such a mineral or working interest, or to a voluntary pooling agreement or a compulsory pooling order heretofore entered by the division.

Signature: *Aricka Easterling* Date: 11/13/18

Aricka Easterling

Printed Name

aeasterling@cimarex.com

E-mail Address

¹⁸ SURVEYOR CERTIFICATION

I hereby certify that the well location shown on this plat was plotted from field notes of actual surveys made by me or under my supervision, and that the same is true and correct to the best of my belief.

December 12, 2017

Date of Survey

Signature and Seal of Professional Surveyor:



Certificate Number:

RUP 5-9-19