

Submit 1 Copy To Appropriate District Office  
District I - (575) 393-6161  
1625 N. French Dr., Hobbs, NM 88240  
District II - (575) 748-1283  
811 S. First St., Artesia, NM 88210  
District III - (505) 334-6178  
1000 Rio Brazos Rd., Aztec, NM 87410  
District IV - (505) 476-3460  
1220 S. St. Francis Dr., Santa Fe, NM 87505

State of New Mexico  
Energy, Minerals and Natural Resources

Form C-103  
Revised July 18, 2013

OIL CONSERVATION DIVISION  
1220 South St. Francis Dr.  
Santa Fe, NM 87505

WELL API NO. 30-015-32821
5. Indicate Type of Lease STATE <input checked="" type="checkbox"/> FEE <input type="checkbox"/>
6. State Oil & Gas Lease No.
7. Lease Name or Unit Agreement Name H B 2 State
8. Well Number 4
9. OGRID Number 6137
10. Pool name or Wildcat Cedar Canyon; Bone Spring
11. Elevation (Show whether DR, RKB, RT, GR, etc.) 3062' GL

SUNDRY NOTICES AND REPORTS ON WELLS  
(DO NOT USE THIS FORM FOR PROPOSALS TO DRILL OR TO DEEPEN OR PLUG BACK TO A DIFFERENT RESERVOIR. USE "APPLICATION FOR PERMIT" (FORM C-101) FOR SUCH PROPOSALS.)

1. Type of Well: Oil Well ☒ Gas Well ☐ Other ☐

2. Name of Operator  
Devon Energy Production Company, LP

3. Address of Operator  
333 W. Sheridan Avenue, Oklahoma City, OK 73102

4. Well Location  
Unit Letter N: 860 feet from the South line and 1780 feet from the West line  
Section 2 Township 24S Range 29E NMPM Eddy County, NM

12. Check Appropriate Box to Indicate Nature of Notice, Report or Other Data

NOTICE OF INTENTION TO:

PERFORM REMEDIAL WORK ☐ PLUG AND ABANDON ☒  
TEMPORARILY ABANDON ☐ CHANGE PLANS ☐  
PULL OR ALTER CASING ☐ MULTIPLE COMPL ☐  
DOWNHOLE COMMINGLE ☐  
CLOSED-LOOP SYSTEM ☐  
OTHER: ☐

SUBSEQUENT REPORT OF:

REMEDIAL WORK ☐ ALTERING CASING ☐  
COMMENCE DRILLING OPNS. ☐ P AND A ☐  
CASING/CEMENT JOB ☐  
OTHER: ☐ R-111-P

13. Describe proposed or completed operations. (Clearly state all pertinent details, and give pertinent dates, including estimated date of starting any proposed work). SEE RULE 19.15.7.14 NMAC. For Multiple Completions: Attach wellbore diagram of proposed completion or recompletion.

**Notify OGD 24 hrs. prior to any work done.**

**RECEIVED**

- MIRU P&A Unit. TOH 2-7/8" tbg.
- Spot 25 sx CI C from 6900'-6650'. (Top Bone Spring @ 6878')
- Spot 25 sx CI C from 6100'-5850'. (DV tool @ 6018') - WOC & Tag P, f @ 3150'
- Perf at 3230'. Squeeze 50' sx CI C from 3230'-3030'. WOC & tag. (Top Delaware @ 3222'; Shoe @ 3100')
- Perf at 2994'. Squeeze 25' sx CI C from 2994'-2894'. WOC & tag. (B. Salt @ 2994') - Solid Cement Plug 3050'-850'
- Perf at 592'. Squeeze 25' sx CI C from 592'-492'. WOC & tag. (Shoe @ 542')
- Perf @ 140'. Squeeze CI C from 140' to surface.
- Cut wellhead off 3' BGL, set dry hole marker.

Spud Date:

Rig Release Date:

\*See Attached CDA's

Must be Plugged by 5/13/20

I hereby certify that the information above is true and complete to the best of my knowledge and belief.

SIGNATURE Armon Radfar TITLE Production Engineer DATE 5-1-19

Type or print name Armon Radfar E-mail address: armon.radfar@dvn.com PHONE: 405-552-5014 or 405-306-8536

**For State Use Only**

APPROVED BY: [Signature] TITLE Staff Mgr DATE 5/13/19  
Conditions of Approval (if any):

**DEVON ENERGY PRODUCTION COMPANY LP**

Well Name: <b>H-B 2 ST 4</b>	Field: <b>Potato Basin</b>
Location: <b>860 FSL 1780 FWL SEC 2 T24 S R29 E</b>	County: <b>Eddy</b> State: <b>New Mexico</b>
Elevation: <b>3062' GL</b>	Spud Date: <b>7/27/2003</b> Compl Date: <b>8/27/2003</b>
API#: <b>30-015-32821</b> Prepared by: <b>Armon Radfar</b>	Date: <b>4/30/19</b> Rev:

**CURRENT WELLBORE**

17-1/2" Hole  
13-3/8", 48#, H-40, ST&C @ 542'  
 Cmt'd w/511 sx CI C to surface

11" Hole  
8-5/8", 32#, J-55, ST&C, @ 3100'  
 Cmt'd w/1025 sx CI C to surface

TOC @ 3404' (CBL)

DV Tool @ 6018'

247 Jts, 2-7/8", 6.5#, J-55 prod tubing (9/22/15)

SN and EOT @ 7832' (9/22/15)

PBTD @ 7895' (9/21/15)  
 CIBP @ 7957' (9/19/15)

**Perforations**  
**8005'-8132' (Bone Spring, TA'd)**

7-7/8" Hole  
5-1/2", 17# & 15.5#, J-55, LT&C @ 8410'  
 Cmt'd w/1410 sx CI C cmt to 3404' (CBL)

**8410' MD**

**DEVON ENERGY PRODUCTION COMPANY LP**

Well Name: <b>H B 2 ST 4</b>	Field: <b>Potato Basin</b>
Location: <b>860 FSL 1780 FWL SEC 2 T24 S R29 E</b>	County: <b>Eddy</b> State: <b>New Mexico</b>
Elevation: <b>3062' GL</b>	Spud Date: <b>7/27/2003</b> Compl Date: <b>8/27/2003</b>
API#: <b>30-015-32821</b>	Prepared by: <b>Armon Radfar</b> Date: <b>4/30/19</b> Rev:

**PROPOSED WELLBORE**

17-1/2" Hole  
13-3/8", 48#, H-40, ST&C @ 542'  
 Cmt'd w/511 sx CI C to surface

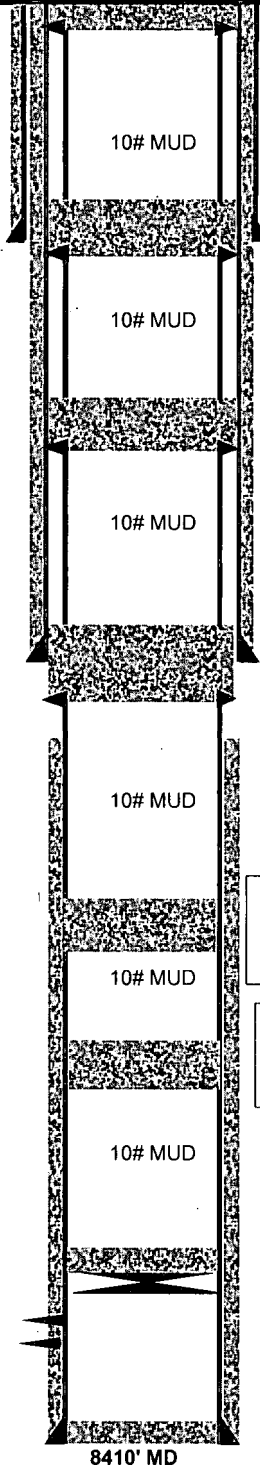
11" Hole  
8-5/8", 32#, J-55, ST&C, @ 3100'  
 Cmt'd w/1025 sx CI C to surface

TOC @ 3404' (CBL)

DV Tool @ 6018'

Perforations  
8005'-8132' (Bone Spring, TA'd)

7-7/8" Hole  
5-1/2", 17# & 15.5#, J-55, LT&C @ 8410'  
 Cmt'd w/1410 sx CI C cmt to 3404' (CBL)



Proposed:  
 1. Perf @ 140'.  
 2. Squeeze CI C from 140' to surface.  
 3. Cut WH off 3' BGL, set dry hole marker.

Proposed:  
 1. Perf at 592'.  
 2. Squeeze 25 sx CI C from 592'-492'. WOC & tag.  
 (Shoe @ 542')

Proposed:  
 1. Perf at 2994'.  
 2. Squeeze 25 sx CI C from 2994'-2894'. WOC & tag.  
 (B. Salt @ 2994')

Proposed:  
 1. Perf at 3230'.  
 2. Squeeze 50 sx CI C from 3230'-3030'. WOC & tag.  
 (Top Delaware @ 3222'; Shoe @ 3100')

#

Proposed:  
 Spot 25 sx CI C from 6100'-5850'.  
 (DV tool @ 6018')

Proposed:  
 Spot 25 sx CI C from 6900'-6650'.  
 (Top Bone Spring @ 6878')

**PBTD @ 7895' (9/21/15)**  
**CIBP @ 7957' (9/19/15)**

**8410' MD**

## **CONDITIONS FOR PLUGGING AND ABANDONMENT**

### **District II / Artesia N.M.**

The following is a guide or checklist in preparation of a plugging program, this is not all inclusive and care must be exercised in establishing special plugging programs in unique and unusual cases, **Notify NMOCD District Office II at (575)-748-1283 at least 24 hours before beginning work.**

1. A notice of intent to plug and abandon a wellbore is required to be approved before plugging operations are conducted. A cement evaluation tool is required in order to ensure isolation of producing formations, protection of water and correlative rights. A cement bond log or other accepted cement evaluation tool is to be provided to the division for evaluation if one has not been previously run or if the well did not have cement circulated to surface during the original casing cementing job or subsequent cementing jobs.
2. Closed loop system is to be used for entire plugging operation. Upon completion, contents of steel pits are to be hauled to a permitted disposal location.
3. Trucking companies being used to haul oilfield waste fluids to a disposal – commercial or private – shall have an approved NMOCD C-133 permit. A copy of this permit shall be available in each truck used to haul waste products. It is the responsibility of the operator as well as the contractor, to verify that this permit is in place prior to performing work. Drivers shall be able to produce a copy upon request of an NMOCD Field inspector.
4. Filing a subsequent C-103 will serve as notification that the well has been plugged.
5. A final C-103 shall be filed (and a site inspection by NMOCD Inspector to determine if the location is satisfactorily cleaned, all equipment, electric poles and trash has been removed to Meet NMOCD standards) before bonding can be released.
6. If the well is not plugged within 1
7. If work has not begun within 1 Year of the approval of this procedure, an extension request must be file stating the reason the well has not been plugged.
8. **Squeeze pressures are not to exceed 500 psi, unless approval is given by NMOCD.**
9. Produced water **will not** be used during any part of the plugging operation.
10. Mud laden fluids must be placed between all cement plugs mixed at 25 sacks per 100 bbls of water.
11. All cement plugs will be a minimum of 100' in length or a minimum of 25 sacks of cement, whichever is greater. 50' of calculated cement excess required for inside casing plugs and 100% calculated cement excess required on outside casing plugs.
12. **Class 'C' cement will be used above 7500 feet.**
13. **Class 'H' cement will be used below 7500 feet.**
14. **A cement plug is required to be set 50' above and 50' below, casing stubs, DV tools, attempted casing cut offs, cement tops outside casing, salt sections and anywhere the casing is perforated, these plugs require a 4 hour WOC and then will be tagged**
15. **All Casing Shoes Will Be Perforated 50' below shoe depth and Attempted to be Squeezed, cement needs to be 50' above and 50' Below Casing Shoe inside the Production Casing**

16. When setting the top out cement plug in production, intermediate and surface casing, wellbores should remain full at least 30 minutes after plugs are set
17. **A CIBP is to be set within 100' of production perforations, capped with 100' of cement, WOC 4 hours and tag.**
18. A CIBP with 35' of cement may be used in lieu of the 100' plug if set with a bailer. This plug will be placed within 100' of the top perforation, **(WOC 4 hrs and tag).**
19. **No more than 3000' is allowed between cement plugs in cased hole and 2000' in open hole.**
20. Some of the Formations to be isolated with cement plugs are: These plugs to be set to isolate formation tops
  - A) Fusselman
  - B) Devonian
  - C) Morrow
  - D) Wolfcamp
  - E) Bone Springs
  - F) Delaware
  - G) Any salt sections
  - H) Abo
  - I) Glorieta
  - J) Yates.
  - K) **Potash---** (In the R-111-P Area (Potash Mine Area), a solid cement plug must be set across the salt section. Fluid used to mix the cement shall be saturated with the salts that are common to the section penetrated and in suitable proportions, not more than 3% calcium chloride (by weight of cement) will be considered the desired mixture whenever possible, **WOC 4 hours and tag, this plug will be 50' below the bottom and 50' above the top of the Formation.**
21. **If cement does not exist behind casing strings at recommended formation depths, the casing can be cut and pulled with plugs set at recommended depths. If casing is not pulled, perforations will be shot and cement squeezed behind casing, WOC and tagged. These plugs will be set 50' below formation bottom to 50' above formation top inside the casing**

#### **DRY HOLE MARKER REQUIREMENTS**

The operator shall mark the exact location of the plugged and abandoned well with a steel marker not less than four inches in diameter, 3' below ground level with a plate of at least ¼" welded to the top of the casing and the dry hole marker welded on the plate with the following information welded on the dry hole marker:

**1. Operator name   2. Lease and Well Number   3.API Number   4. Unit Letter   5. Quarter Section (feet from the North, South, East or West)   6. Section, Township and Range   7. Plugging Date   8. County   (SPECIAL CASES)-----AGRICULTURE OR PRARIE CHICKEN BREEDING AREAS**

In these areas, a below ground marker is required with all pertinent information mentioned above on a plate, set 3' below ground level, a picture of the plate will be supplied to NMOCD for record, the exact location of the marker (longitude and latitude by GPS) will be provided to NMOCD (We typically require a current survey to verify the GPS)