

District I
1625 N. French Dr., Hobbs, NM 88240
Phone: (575) 393-6161 Fax: (575) 393-0720
District II
811 S. First St., Artesia, NM 88210
Phone: (575) 748-1283 Fax: (575) 748-9720
District III
1000 Rio Brazos Road, Aztec, NM 87410
Phone: (505) 334-6178 Fax: (505) 334-6170
District IV
1220 S. St. Francis Dr., Santa Fe, NM 87505
Phone: (505) 476-3460 Fax: (505) 476-3462

State of New Mexico
Energy, Minerals & Natural Resources Department
OIL CONSERVATION DIVISION
1220 South St. Francis Dr.
Santa Fe, NM 87505

Form C-102
Revised August 1, 2011
Submit one copy to appropriate
District Office

☐ AMENDED REPORT

WELL LOCATION AND ACREAGE DEDICATION PLAT

1 API Number 30-015- 45969		2 Pool Code 98220		3 Pool Name Purple Sage; Wolfcamp	
4 Property Code 308251		5 Property Name MYOX 28 STATE COM			
7 GRID NO. 229137		8 Operator Name COG OPERATING, LLC			
		6 Well Number 702H			
		9 Elevation 2958'			

10 Surface Location

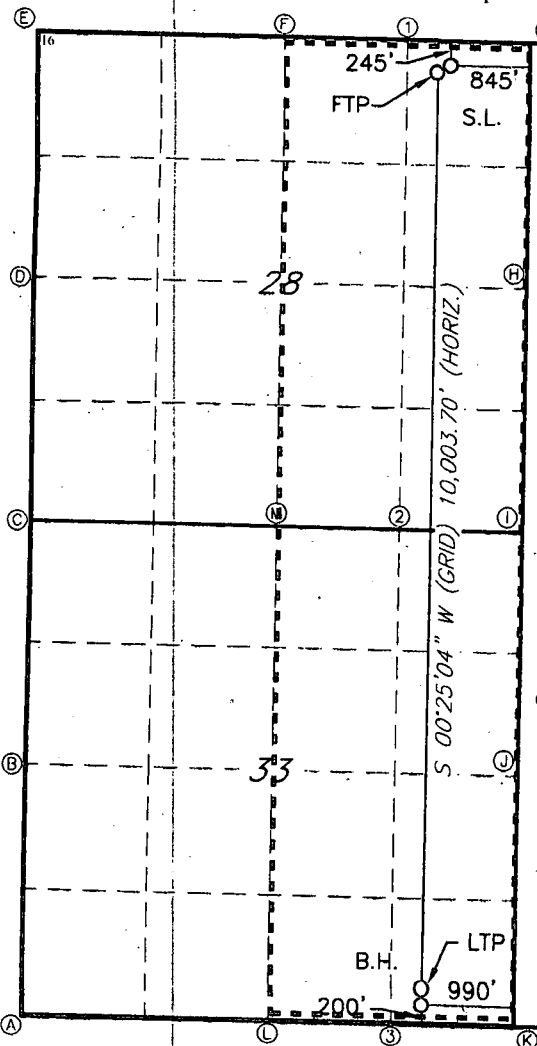
UL or lot no. A	Section 28	Township 25S	Range 28E	Lot Idn	Feet from the 245	North/South line NORTH	Feet From the 845	East/West line EAST	County EDDY
--------------------	---------------	-----------------	--------------	---------	----------------------	---------------------------	----------------------	------------------------	----------------

11 Bottom Hole Location If Different From Surface

UL or lot no. P	Section 33	Township 25S	Range 28E	Lot Idn	Feet from the 200	North/South line SOUTH	Feet from the 990	East/West line EAST	County EDDY
--------------------	---------------	-----------------	--------------	---------	----------------------	---------------------------	----------------------	------------------------	----------------

12 Dedicated Acres 640	13 Joint or Infill	14 Consolidation Code	15 Order No.
---------------------------	--------------------	-----------------------	--------------

No allowable will be assigned to this completion until all interest have been consolidated or a non-standard unit has been approved by the division.



GEODETIC DATA
NAD 83 GRID - NM EAST

SURFACE LOCATION (SL)
N: 402951.4 - E: 617754.6
LAT: 32.1075523° N
LONG: 104.0865288° W

LAST TAKE POINT (LTP)
330' FSL & 990' FEL
N: 392863.1 - E: 617684.3
LAT: 32.0798206° N
LONG: 104.0868303° W

FIRST TAKE POINT (FTP)
330' FSL & 990' FEL
N: 402864.3 - E: 617611.4
LAT: 32.1075138° N
LONG: 104.0869920° W

BOTTOM HOLE (BH)
N: 392733.2 - E: 617683.5
LAT: 32.0794633° N
LONG: 104.0868341° W

GEODETIC DATA
NAD 83 GRID - NM EAST

A: FOUND BRASS CAP "1940"
N 392529.2 - E 613351.3

B: FOUND BRASS CAP "1940"
N 395142.1 - E 613371.6

C: FOUND 1" IRON PIPE
N 397757.7 - E 613392.3

D: FOUND BRASS CAP "1940"
N 400451.8 - E 613369.8

E: FOUND BRASS CAP "1940"
N 403146.8 - E 613348.7

F: FOUND BRASS CAP "1940"
N 403170.2 - E 615983.6

G: FOUND BRASS CAP "1940"
N 403208.9 - E 618594.4

H: FOUND BRASS CAP "1940"
N 400508.7 - E 618649.2

I: FOUND BRASS CAP "1940"
N 397808.2 - E 618708.1

J: FOUND BRASS CAP "1940"
N 395170.1 - E 618689.8

K: FOUND BRASS CAP "1940"
N 392534.0 - E 618671.9

L: FOUND BRASS CAP "1940"
N 392531.9 - E 616012.7

M: FOUND BRASS CAP "1940"
N 397781.6 - E 616048.8

CALCULATED POINTS

1: N 403189.5 - E 617289.0
2: N 397794.9 - E 617378.4
3: N 392532.9 - E 617342.3

17 OPERATOR CERTIFICATION

I hereby certify that the information contained herein is true and complete to the best of my knowledge and belief, and that this organization either owns a working interest or unleased mineral interest in the land including the proposed bottom hole location or has a right to drill this well at this location pursuant to a contract with an owner of such a mineral or working interest, or to a voluntary pooling agreement or a compulsory pooling order heretofore entered by the division.

[Signature] 3/25/19
Signature Date
Robyn M. Russell
Printed Name
Russell@concho.com
E-mail Address

18 SURVEYOR CERTIFICATION

I hereby certify that the well location shown on this plat was plotted from field notes of actual surveys made by me or under my supervision, and that the same is true and correct to the best of my belief.

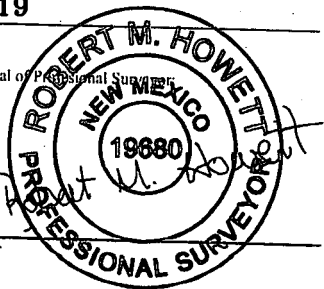
3-06-19

Date of Survey

Signature and Seal of Professional Surveyor

19680

Certificate Number



Job No.: LS19030302

RVP 5-9-19