

UNITED STATES  
DEPARTMENT OF THE INTERIOR  
BUREAU OF LAND MANAGEMENT

RECEIVED

OCD Artesia  
MAY 31 2018FORM APPROVED  
OMB NO. 1004-0137  
Expires: January 31, 2018**SUNDRY NOTICES AND REPORTS ON WELLS**  
*Do not use this form for proposals to drill or to re-enter an abandoned well. Use form 3160-3 (APD) for such proposals.*

DISTRICT II-ARTESIA O.C.D.

**SUBMIT IN TRIPLICATE - Other instructions on page 2**

5. Lease Serial No. NMNM100558
6. If Indian, Allottee or Tribe Name
7. If Unit or CA/Agreement, Name and/or No.
8. Well Name and No. TUCKER DRAW 9-4 FED COM 6H
9. API Well No. 30-015-44479
10. Field and Pool or Exploratory Area PURPLE SAGE; WOLFCAMP (GAS)
11. County or Parish, State EDDY COUNTY, NM

1. Type of Well <input type="checkbox"/> Oil Well <input type="checkbox"/> Gas Well <input checked="" type="checkbox"/> Other: UNKNOWN OTH	
2. Name of Operator RKI EXPLORATION AND PRODUCTION LLC	Contact: JESSICA DEMARCE Email: Jessica.demarce@wpenergy.com
3a. Address 3500 ONE WILLIAMS CENTER MD 35 TULSA, OK 74172	3b. Phone No. (include area code) Ph: 539-573-3521
4. Location of Well (Footage, Sec., T., R., M., or Survey Description) Sec 16 T26S R30E 260FNL 355FEL	

**12. CHECK THE APPROPRIATE BOX(ES) TO INDICATE NATURE OF NOTICE, REPORT, OR OTHER DATA**

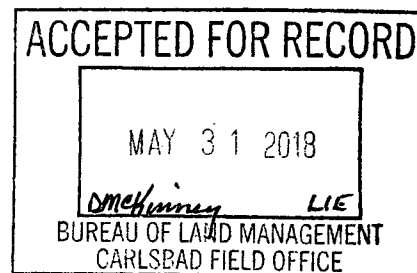
TYPE OF SUBMISSION	TYPE OF ACTION			
<input type="checkbox"/> Notice of Intent	<input type="checkbox"/> Acidize	<input type="checkbox"/> Deepen	<input type="checkbox"/> Production (Start/Resume)	<input type="checkbox"/> Water Shut-Off
<input checked="" type="checkbox"/> Subsequent Report	<input type="checkbox"/> Alter Casing	<input type="checkbox"/> Hydraulic Fracturing	<input type="checkbox"/> Reclamation	<input type="checkbox"/> Well Integrity
<input type="checkbox"/> Final Abandonment Notice	<input type="checkbox"/> Casing Repair	<input type="checkbox"/> New Construction	<input type="checkbox"/> Recomplete	<input type="checkbox"/> Other
	<input type="checkbox"/> Change Plans	<input type="checkbox"/> Plug and Abandon	<input type="checkbox"/> Temporarily Abandon	
	<input type="checkbox"/> Convert to Injection	<input type="checkbox"/> Plug Back	<input checked="" type="checkbox"/> Water Disposal	

13. Describe Proposed or Completed Operation: Clearly state all pertinent details, including estimated starting date of any proposed work and approximate duration thereof. If the proposal is to deepen directionally or recomple horizontally, give subsurface locations and measured and true vertical depths of all pertinent markers and zones. Attach the Bond under which the work will be performed or provide the Bond No. on file with BLM/BIA. Required subsequent reports must be filed within 30 days following completion of the involved operations. If the operation results in a multiple completion or recomple in a new interval, a Form 3160-4 must be filed once testing has been completed. Final Abandonment Notices must be filed only after all requirements, including reclamation, have been completed and the operator has determined that the site is ready for final inspection.

RKI EXPLORATION and PRODUCTION LLC Requests to dispose of produced water for the above mentioned well in the locations below:

Producing Formation: Wolfcamp  
Amount of water production per day: 2700 bbls max/1650 bbls avg  
Onsite storage: (4) 500 bbl water tanks  
Transport method and company: Pipeline ? Stateline Water, LLC  
Water facility operator: RKI EXPLORATION & PRODUCTION LLC  
Name of facility/SWD: STATELINE SWD 2-1  
Location of facility/SWD: Sec 2 Blk 56 T1, 417? North, 467? West  
Permit Number for facility/SWD: W14# 14063  
API: 42-301-31961

GC 5-31-18  
Accepted for record - NMOC



14. I hereby certify that the foregoing is true and correct.	
Electronic Submission #421733 verified by the BLM Well Information System For RKI EXPLORATION AND PRODUCTION, sent to the Carlsbad Committed to AFMSS for processing by DEBORAH MCKINNEY on 05/30/2018 ( )	
Name (Printed/Typed) JESSICA DEMARCE	Title PERMIT TECH II
Signature (Electronic Submission)	Date 05/29/2018

**THIS SPACE FOR FEDERAL OR STATE OFFICE USE**

Approved By _____	Title _____	Date _____
Conditions of approval, if any, are attached. Approval of this notice does not warrant or certify that the applicant holds legal or equitable title to those rights in the subject lease which would entitle the applicant to conduct operations thereon.		Office _____

Title 18 U.S.C. Section 1001 and Title 43 U.S.C. Section 1212, make it a crime for any person knowingly and willfully to make to any department or agency of the United States any false, fictitious or fraudulent statements or representations as to any matter within its jurisdiction.

(Instructions on page 2)

**\*\* OPERATOR-SUBMITTED \*\* OPERATOR-SUBMITTED \*\* OPERATOR-SUBMITTED \*\***

**Additional data for EC transaction #421733 that would not fit on the form**

**32. Additional remarks, continued**

UIC: 000107340

Other locations if primary disposal is down

--SEE NEXT PAGE(S)--

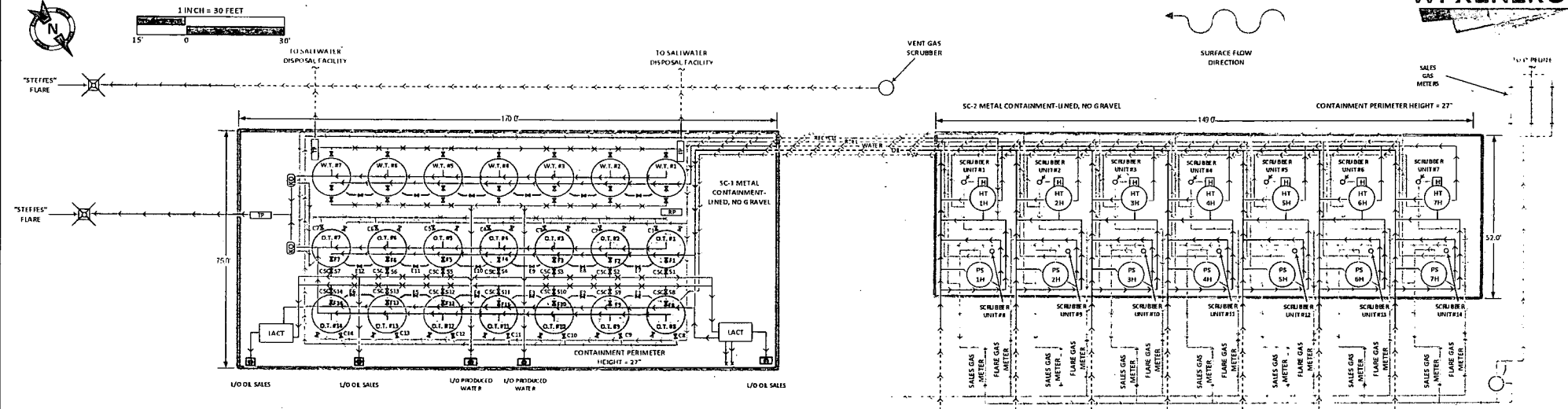
operator: RKI EXPLORATION & PRODUCTION LLC  
Name of facility/SWD: DAMSITE UNIT 1  
Location of facility/SWD: Sec 9 Blk 56 T1, 1320? North, 1320? North  
Permit Number for facility/SWD: W14# 13129  
API: 42-301-30047  
UIC: 000102256

Water facility operator: RKI EXPLORATION & PRODUCTION LLC  
Name of facility/SWD: RED BLUFF DEEP 1D  
Location of facility/SWD: Sec 2 Blk 56 T1, 467? North, 467? East  
Permit Number for facility/SWD: W14# 13995  
API: 42-301-30225  
UIC: 000102257

Water facility operator: RKI EXPLORATION & PRODUCTION LLC  
Name of facility/SWD: RED BLUFF 8-1  
Location of facility/SWD: Sec 2 Blk 56 T1, 467? North, 467? East  
Permit Number for facility/SWD: W14# 13995  
API: 42-301-30294  
UIC: 000100957

Water facility operator: RKI EXPLORATION & PRODUCTION LLC  
Name of facility/SWD: RED BLUFF 8-2D  
Location of facility/SWD: Sec 2 Blk 56 T1, 467? North, 467? East  
Permit Number for facility/SWD: W14# 13995  
API: 42-301-30333  
UIC: 000101482

A Current Site Facility Diagram is Attached



Valve	Production Phase	Valve Seal Chart	Valve Seal Chart	Valve Seal Chart	Valve Seal Chart
		Valve Seal Chart	Valve Seal Chart	Valve Seal Chart	Valve Seal Chart
S1	Closed	Open	Closed	F3	Closed or Open
S2	Closed	Open	Closed	F4	Closed or Open
S3	Closed	Open	Closed	F5	Closed or Open
S4	Closed	Open	Closed	F6	Closed or Open
S5	Closed	Open	Closed	F7	Closed or Open
S6	Closed	Open	Closed	F8	Closed or Open
S7	Closed	Open	Closed	F9	Closed or Open
S8	Closed	Open	Closed	F10	Closed or Open
S9	Closed	Open	Closed	F11	Closed or Open
S10	Closed	Open	Closed	F12	Closed or Open
S11	Closed	Open	Closed	F13	Closed or Open
S12	Closed	Open	Closed	F14	Closed or Open
S13	Closed	Open	Closed	F15	Closed or Open
S14	Closed	Open	Closed	F16	Closed or Open
S15	Closed	Open	Closed	F17	Closed or Open
S16	Closed	Open	Closed	F18	Closed or Open
S17	Closed	Open	Closed	F19	Closed or Open
S18	Closed	Open	Closed	F20	Closed or Open
S19	Closed	Open	Closed	F21	Closed or Open
S20	Closed	Open	Closed	F22	Closed or Open
S21	Closed	Open	Closed	F23	Closed or Open
S22	Closed	Open	Closed	F24	Closed or Open
S23	Closed	Open	Closed	F25	Closed or Open
S24	Closed	Open	Closed	F26	Closed or Open
S25	Closed	Open	Closed	F27	Closed or Open
S26	Closed	Open	Closed	F28	Closed or Open
S27	Closed	Open	Closed	F29	Closed or Open
S28	Closed	Open	Closed	F30	Closed or Open
S29	Closed	Open	Closed	F31	Closed or Open
S30	Closed	Open	Closed	F32	Closed or Open
S31	Closed	Open	Closed	F33	Closed or Open
S32	Closed	Open	Closed	F34	Closed or Open
S33	Closed	Open	Closed	F35	Closed or Open
S34	Closed	Open	Closed	F36	Closed or Open
S35	Closed	Open	Closed	F37	Closed or Open
S36	Closed	Open	Closed	F38	Closed or Open
S37	Closed	Open	Closed	F39	Closed or Open
S38	Closed	Open	Closed	F40	Closed or Open
S39	Closed	Open	Closed	F41	Closed or Open
S40	Closed	Open	Closed	F42	Closed or Open
S41	Closed	Open	Closed	F43	Closed or Open
S42	Closed	Open	Closed	F44	Closed or Open
S43	Closed	Open	Closed	F45	Closed or Open
S44	Closed	Open	Closed	F46	Closed or Open
S45	Closed	Open	Closed	F47	Closed or Open
S46	Closed	Open	Closed	F48	Closed or Open
S47	Closed	Open	Closed	F49	Closed or Open
S48	Closed	Open	Closed	F50	Closed or Open
S49	Closed	Open	Closed	F51	Closed or Open
S50	Closed	Open	Closed	F52	Closed or Open
S51	Closed	Open	Closed	F53	Closed or Open
S52	Closed	Open	Closed	F54	Closed or Open
S53	Closed	Open	Closed	F55	Closed or Open
S54	Closed	Open	Closed	F56	Closed or Open
S55	Closed	Open	Closed	F57	Closed or Open
S56	Closed	Open	Closed	F58	Closed or Open
S57	Closed	Open	Closed	F59	Closed or Open
S58	Closed	Open	Closed	F60	Closed or Open
S59	Closed	Open	Closed	F61	Closed or Open
S60	Closed	Open	Closed	F62	Closed or Open
S61	Closed	Open	Closed	F63	Closed or Open
S62	Closed	Open	Closed	F64	Closed or Open
S63	Closed	Open	Closed	F65	Closed or Open
S64	Closed	Open	Closed	F66	Closed or Open
S65	Closed	Open	Closed	F67	Closed or Open
S66	Closed	Open	Closed	F68	Closed or Open
S67	Closed	Open	Closed	F69	Closed or Open
S68	Closed	Open	Closed	F70	Closed or Open
S69	Closed	Open	Closed	F71	Closed or Open
S70	Closed	Open	Closed	F72	Closed or Open
S71	Closed	Open	Closed	F73	Closed or Open
S72	Closed	Open	Closed	F74	Closed or Open
S73	Closed	Open	Closed	F75	Closed or Open
S74	Closed	Open	Closed	F76	Closed or Open
S75	Closed	Open	Closed	F77	Closed or Open
S76	Closed	Open	Closed	F78	Closed or Open
S77	Closed	Open	Closed	F79	Closed or Open
S78	Closed	Open	Closed	F80	Closed or Open
S79	Closed	Open	Closed	F81	Closed or Open
S80	Closed	Open	Closed	F82	Closed or Open
S81	Closed	Open	Closed	F83	Closed or Open
S82	Closed	Open	Closed	F84	Closed or Open
S83	Closed	Open	Closed	F85	Closed or Open
S84	Closed	Open	Closed	F86	Closed or Open
S85	Closed	Open	Closed	F87	Closed or Open
S86	Closed	Open	Closed	F88	Closed or Open
S87	Closed	Open	Closed	F89	Closed or Open
S88	Closed	Open	Closed	F90	Closed or Open
S89	Closed	Open	Closed	F91	Closed or Open
S90	Closed	Open	Closed	F92	Closed or Open
S91	Closed	Open	Closed	F93	Closed or Open
S92	Closed	Open	Closed	F94	Closed or Open
S93	Closed	Open	Closed	F95	Closed or Open
S94	Closed	Open	Closed	F96	Closed or Open
S95	Closed	Open	Closed	F97	Closed or Open
S96	Closed	Open	Closed	F98	Closed or Open
S97	Closed	Open	Closed	F99	Closed or Open
S98	Closed	Open	Closed	F100	Closed or Open
S99	Closed	Open	Closed	F101	Closed or Open
S100	Closed	Open	Closed	F102	Closed or Open

NOTE: Some measurements on drawing are estimates and not field verified.

**FACILITY SITE DIAGRAM**

RKI Exploration & Production, LLC – Permian Basin  
TUCKER DRAW 9-4 (1H, 2H, 3H, 4H, 5H, 6H, 7H)  
SEC. 16, T26S, R30E  
API #: 30-015-(44477, 44478, 44486, 44487, 44488, 44479, 44480)  
Latitude: 32.048976° Longitude: -103.878641°  
EDDY COUNTY, NM

DRAWN BY: Kevin Fox  
DATE: 4.3.2018

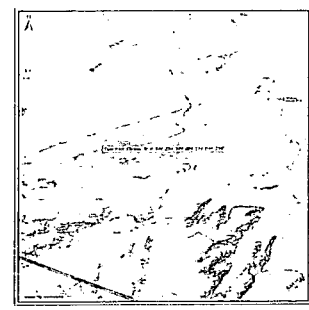
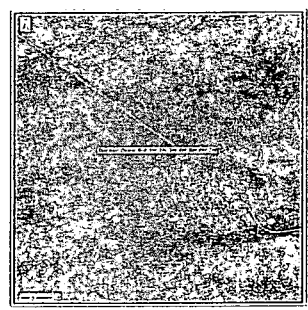
**LEGEND**

ABOVE-GRADE EQUIPMENT  
BELOW-GRADE EQUIPMENT  
SECONDARY CONTAINMENT  
WELL HEAD  
HEATER  
OVERFILL ALARM  
FENCE  
ELECTRIC LINE

OIL DUMP LINE  
WATER DUMP LINE  
FLOW LINE  
VENT LINE  
RECYCLE LINE  
ROLL LINE  
PSV LINE  
GAS LINE  
FUEL GAS LINE  
SKIMMER

THIS SITE IS SUBJECT TO THE SITE SECURITY PLAN FOR THE PERMIAN BASIN.

PLAN LOCATED AT: WPX ENERGY PRODUCTION, INC. 5315 Buena Vista Carlsbad NM, 88220



**Sales Phase:** The tank from which sales are being made will be isolated by sealing closed the fill valve(s) (F), circulating valve (C), and the equalizer valve (E) during sales; and opening the sales valve (S). Upon completion of the sale, the sales valve will be released. Sales by truck will be by tank gauge.

**Production Phase:** Sales valves S1 through S14 sealed closed. Fill valve (F) to tank that is in production will be open. Equalizer valve (E) to tank that is in production will be open. Circulating valves (C) will be open as necessary, then released.

ACCESS ROAD

SURFACE FLOW DIRECTION

BUREAU OF LAND MANAGEMENT  
Carlsbad Field Office  
620 East Greene Street  
Carlsbad, New Mexico 88220  
575-234-5972

Disposal of Produced Water From Federal Wells  
Conditions of Approval

Approval of the produced water disposal methodology is subject to the following conditions of approval:

1. This agency shall be notified of any change in your method or location of disposal.
2. Compliance with all provisions of Onshore Order No. 7.
3. This agency shall be notified of any spill or discharge as required by NTL-3A.
4. This agency reserves the right to modify or rescind approval whenever it determines continued use of the approved method may adversely affect the surface or subsurface environments.
5. Any on-lease open top storage tanks shall be covered with a protective cover to prevent entry by birds and other wildlife.
6. This approval should not constitute the granting of any right-of-way or construction rights not granted by the lease instrument.
7. If water is transported via a pipeline that extends beyond the lease boundary, then you need to submit within 30 days an application for right-of-way approval to the Realty Section in this office if you have not already done so.
8. Disposal at any other site will require prior approval.
9. Subject to like approval by NMOCD

4/4/2017