

RECEIVED

MAY 15 2019

District I  
1625 N. French Dr., Hobbs, NM 88240  
Phone: (575) 393-6167 Fax: (575) 393-0720  
District II  
811 S. First St., Artesia, NM 88210  
Phone: (575) 748-1283 Fax: (575) 748-9720  
District III  
1000 Rio Brazos Road, Aztec, NM 87410  
Phone: (505) 334-6178 Fax: (505) 334-6170  
District IV  
1220 S. St. Francis Dr., Santa Fe, NM 87505  
Phone: (505) 476-3460 Fax: (505) 476-3462

State of New Mexico  
Energy, Minerals & Natural Resources Department  
OIL CONSERVATION DIVISION  
1220 South St. Francis Dr.  
Santa Fe, NM 87505

DISTRICT II-ARTESIA O.C.D.

Form C-102

Revised August 1, 2011

Submit one copy to appropriate  
District Office

AMENDED REPORT

## WELL LOCATION AND ACREAGE DEDICATION PLAT

API Number 30-015-45172	Pool Code 33740	Pool Name Ingle Wells; Bone Spring
Property Code 322245	Property Name PLATINUM MDP1 "34-3" FEDERAL COM	Well Number 6H
OGRID No. 14696	Operator Name OXY USA INC.	Elevation 3444.9'

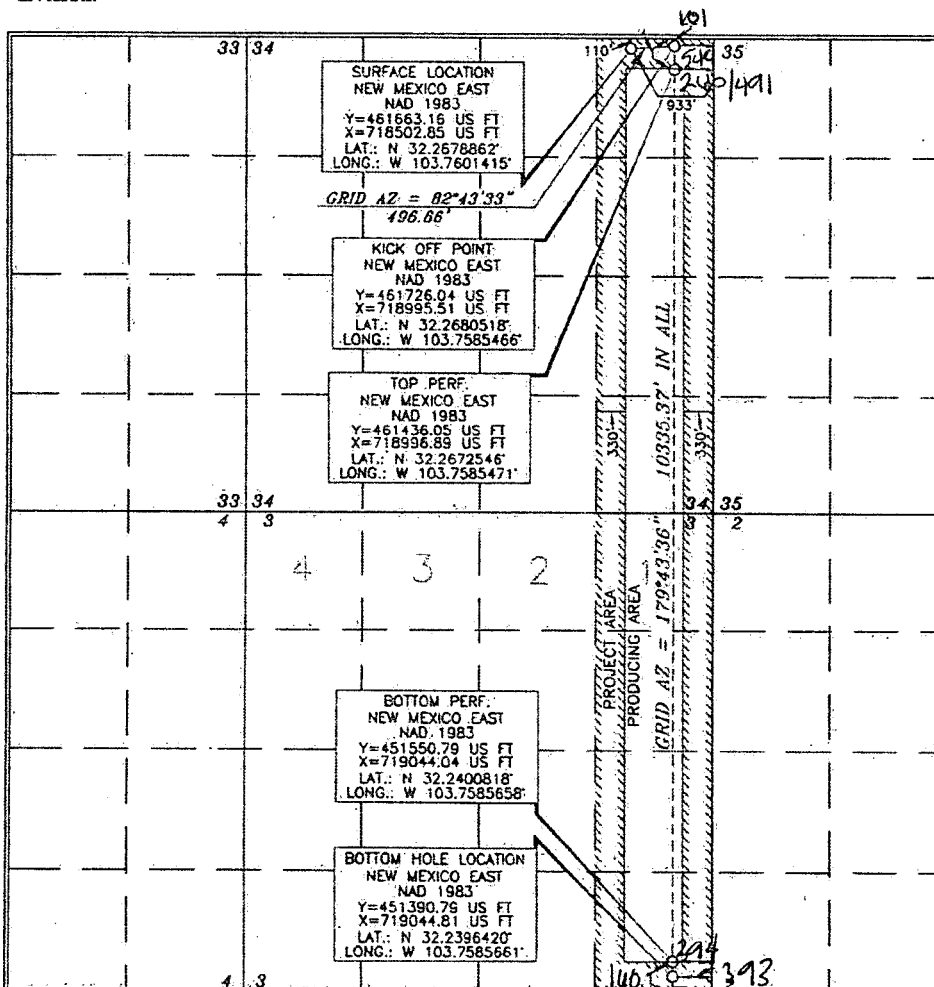
## Surface Location

UL or lot no.	Section	Township	Range	Lot Ida	Feet from the	North/South line	Feet from the	East/West line	County
A	34	23 SOUTH	31 EAST, N.M.P.M.		110'	NORTH	933'	EAST	EDDY

## Bottom Hole Location If Different From Surface

UL or lot no.	Section	Township	Range	Lot Ida	Feet from the	North/South line	Feet from the	East/West line	County
P	3	24 SOUTH	31 EAST, N.M.P.M.		20	SOUTH	393	EAST	EDDY
Dedicated Acres 320	Joint or Infill	Consolidation Code	Order No.						

No allowable will be assigned to this completion until all interests have been consolidated or a non-standard unit has been approved by the division.



## OPERATOR CERTIFICATION

I hereby certify that the information contained herein is true and complete to the best of my knowledge and belief, and that this organization either owns a working interest or unleased mineral interest in the land including the proposed bottom hole location or has a right to drill this well at this location pursuant to a contract with an owner of such a mineral or working interest, or to a voluntary pooling agreement or a compulsory pooling order

Therefore entered by the division

Signature: Sarah Chapman Date: 1/29/19

Printed Name: Sarah Chapman

E-mail Address: sarah-chapman@oxy.com

## SURVEYOR CERTIFICATION

I hereby certify that the well location shown on this plat was plotted from field notes of actual surveys made by me or under my supervision and that the same is true and correct to the best of my belief.

Date of Survey: JANUARY 25, 2019

Signature and Seal: [Signature] PROFESSIONAL LAND SURVEYOR

Certificate Number: 15079

Signature: [Signature] 3/2/2018

Certificate Number: 15079

WO# 180125WL-b (KA)