

**DISTRICT I**  
1625 N. French Dr., Hobbs, NM 88240  
Phone: (575) 393-6161 Fax: (575) 393-0720

**DISTRICT II**  
811 S. First St., Artesia, NM 88210  
Phone: (575) 748-1283 Fax: (575) 748-9720

**DISTRICT III**  
1000 Rio Brazos Road, Aztec, NM 87410  
Phone: (505) 334-6178 Fax: (505) 334-6170

**DISTRICT IV**  
1220 S. St. Francis Dr., Santa Fe, NM 87505  
Phone: (505) 476-3460 Fax: (505) 476-3462

State of New Mexico  
Energy, Minerals & Natural Resources Department  
**OIL CONSERVATION DIVISION**  
1220 South St. Francis Dr.  
Santa Fe, New Mexico 87505

Form C-102  
Revised August 1, 2011  
Submit one copy to appropriate  
District Office

**RECEIVED** AMENDED REPORT

**WELL LOCATION AND ACREAGE DEDICATION PLAT**

**MAY 30 2019**

API Number		Pool Code		Pool Name	
Property Code		Property Name <b>HELLCAT</b>			Well Number <b>2H</b>
OGRID No.		Operator Name <b>TAMAROA OPERATING, LLC</b>			Elevation <b>3938'</b>

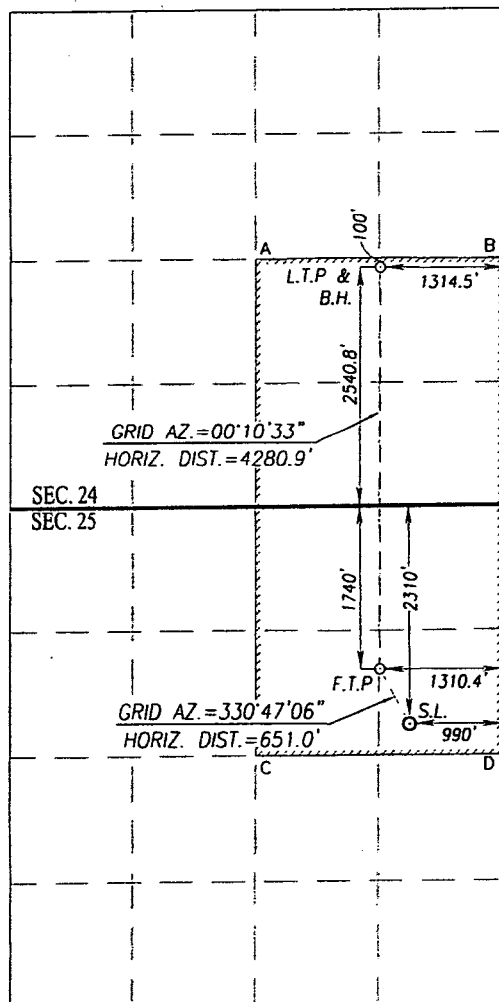
UL or lot No.	Section	Township	Range	Lot Idn	Feet from the	North/South line	Feet from the	East/West line	County
<b>H</b>	<b>25</b>	<b>8-S</b>	<b>28-E</b>		<b>2310</b>	<b>NORTH</b>	<b>990</b>	<b>EAST</b>	<b>CHAVES</b>

**Bottom Hole Location If Different From Surface**

UL or lot No.	Section	Township	Range	Lot Idn	Feet from the	North/South line	Feet from the	East/West line	County
<b>I</b>	<b>24</b>	<b>8-S</b>	<b>28-E</b>		<b>2540.8</b>	<b>SOUTH</b>	<b>1314.5</b>	<b>EAST</b>	<b>CHAVES</b>

Dedicated Acres	Joint or Infill	Consolidation Code	Order No.
-----------------	-----------------	--------------------	-----------

NO ALLOWABLE WILL BE ASSIGNED TO THIS COMPLETION UNTIL ALL INTERESTS HAVE BEEN CONSOLIDATED OR A NON-STANDARD UNIT HAS BEEN APPROVED BY THE DIVISION



SCALE: 1"=2000'

<b>LAST TAKE POINT &amp; BOTTOM HOLE LOCATION</b> NAD 83 NME Y= 947878.1 N X= 631482.4 E LAT.=33.605240° N LONG.=104.037259° W	<b>LAST TAKE POINT &amp; BOTTOM HOLE LOCATION</b> NAD 27 NME Y= 947813.5 N X= 590304.8 E LAT.=33.605145° N LONG.=104.036740° W
---	---

**CORNER COORDINATES TABLE**  
NAD 27 NME

A - Y= 947907.3 N, X= 588970.8 E
B - Y= 947919.6 N, X= 591619.4 E
C - Y= 942625.7 N, X= 588957.8 E
D - Y= 942636.8 N, X= 591597.5 E

**CORNER COORDINATES TABLE**  
NAD 83 NME

A - Y= 947971.9 N, X= 630148.4 E
B - Y= 947984.2 N, X= 632797.0 E
C - Y= 942690.4 N, X= 630135.4 E
D - Y= 942701.5 N, X= 632775.1 E

**FIRST TAKE POINT**  
NAD 83 NME  
Y= 943598.4 N  
X= 631469.6 E  
LAT.=33.593478° N  
LONG.=104.037342° W

**FIRST TAKE POINT**  
NAD 27 NME  
Y= 943533.8 N  
X= 590291.7 E  
LAT.=33.593382° N  
LONG.=104.036824° W

**GEODETIC COORDINATES**  
NAD 83 NME  
SURFACE LOCATION  
Y= 943030.4 N  
X= 631786.9 E  
LAT.=33.591915° N  
LONG.=104.036304° W

**GEODETIC COORDINATES**  
NAD 27 NME  
SURFACE LOCATION  
Y= 942965.8 N  
X= 590609.3 E  
LAT.=33.591819° N  
LONG.=104.035786° W

**OPERATOR CERTIFICATION**

I hereby certify that the information herein is true and complete to the best of my knowledge and belief, and that this organization either owns a working interest or unleased mineral interest in the land including the proposed bottom hole location or has a right to drill this well at this location pursuant to a contract with an owner of such mineral or working interest, or to a voluntary pooling agreement or a compulsory pooling order heretofore entered by the division.

*[Signature]* **5-30-19**  
Signature Date  
**Phelps White**  
Printed Name  
**Pwhite@cia.net.com**  
E-mail Address

**SURVEYOR CERTIFICATION**

I hereby certify that the well location shown on this plat was plotted from field notes of actual surveys made by me or under my supervision, and that the same is true and correct to the best of my belief.

**MARCH 25 2019**  
Date of Survey  
Signature of Professional Surveyor  
**RONALD J. EIDSON**  
**3239**  
REGISTERED PROFESSIONAL SURVEYOR  
Certificate Number  
Gary G. Eidson 12641  
Ronald J. Eidson 3239  
ACK REL. W.O.:19110484 JWSC W.O.: 19.13.0621