

RECEIVED

Form C-102

DISTRICT I
1625 N. French Dr., Hobbs, NM 88240
Phone: (575) 393-6161 Fax: (575) 393-0720

DISTRICT II
811 S. First St., Artesia, NM 88210
Phone: (575) 748-1283 Fax: (575) 748-9720

DISTRICT III
1000 Rio Brazos Road, Aztec, NM 87410
Phone: (505) 334-6178 Fax: (505) 334-6170

DISTRICT IV
1220 S. St. Francis Dr., Santa Fe, NM 87505
Phone: (505) 476-3460 Fax: (505) 476-3462

State of New Mexico
Energy, Minerals & Natural Resources Department
OIL CONSERVATION DIVISION
1220 South St. Francis Dr.
Santa Fe, New Mexico 87505

MAY 28 2018

Revised August 1, 2011

Submit one copy to appropriate
District Office

DISTRICT II-ARTESIA O.C.D.

AMENDED REPORT

WELL LOCATION AND ACREAGE DEDICATION PLAT

API Number 30-015-46021	Pool Code 98220	Pool Name Purple Sage; Wolfcamp
Property Code 39924	Property Name MAD RIVER 13 STATE	Well Number 8H
OGRID No. 249099	Operator Name CAZA OPERATING, LLC	Elevation 3102'

Surface Location

UL or lot No.	Section	Township	Range	Lot Idn	Feet from the	North/South line	Feet from the	East/West line	County
P	13	24-S	27-E		630	SOUTH	175	EAST	EDDY

Bottom Hole Location If Different From Surface

UL or lot No.	Section	Township	Range	Lot Idn	Feet from the	North/South line	Feet from the	East/West line	County
M	13	24-S	27-E		1000	SOUTH	270	WEST	EDDY
Dedicated Acres 320	Joint or Infill	Consolidation Code	Order No.						

NO ALLOWABLE WILL BE ASSIGNED TO THIS COMPLETION UNTIL ALL INTERESTS HAVE BEEN CONSOLIDATED OR A NON-STANDARD UNIT HAS BEEN APPROVED BY THE DIVISION

BOTTOM HOLE LOCATION NAD 27 NME Y= 440143.8 N X= 556241.7 E LAT.=32.212691° N LONG.=104.151484° W	LAST TAKE POINT NAD 27 NME Y= 441145.3 N X= 556301.6 E LAT.=32.212694° N LONG.=104.151291° W	FIRST TAKE POINT NAD 27 NME Y= 441251.4 N X= 561007.7 E LAT.=32.212991° N LONG.=104.136074° W	GEODETIC COORDINATES NAD 27 NME SURFACE LOCATION Y= 440895.6 N X= 561163.1 E LAT.=32.211984° N LONG.=104.135573° W
BOTTOM HOLE LOCATION NAD 83 NME Y= 441202.0 N X= 597424.8 E LAT.=32.212811° N LONG.=104.151980° W	LAST TAKE POINT NAD 83 NME Y= 441203.5 N X= 597484.7 E LAT.=32.212815° N LONG.=104.151786° W	FIRST TAKE POINT NAD 83 NME Y= 441319.7 N X= 602190.8 E LAT.=32.213112° N LONG.=104.136568° W	GEODETIC COORDINATES NAD 83 NME SURFACE LOCATION Y= 440953.9 N X= 602346.3 E LAT.=32.212105° N LONG.=104.136068° W
CORNER COORDINATES TABLE NAD 27 NME A - Y= 441598.5 N, X= 561336.9 E B - Y= 440269.8 N, X= 561339.3 E C - Y= 440137.4 N, X= 555975.6 E D - Y= 441491.2 N, X= 555970.5 E		CORNER COORDINATES TABLE NAD 83 NME A - Y= 441656.8 N, X= 602520.0 E B - Y= 440328.1 N, X= 602522.5 E C - Y= 440195.6 N, X= 597158.6 E D - Y= 441549.5 N, X= 597153.6 E	

OPERATOR CERTIFICATION

I hereby certify that the information herein is true and complete to the best of my knowledge and belief, and that this organization either owns a working interest or unleased mineral interest in the land including the proposed bottom hole location or has a right to drill this well at this location pursuant to a contract with an owner of such mineral or working interest, or to a voluntary pooling agreement or a compulsory pooling order heretofore entered by the division.

Signature _____ Date **02/14/2019**

Printed Name
Steve Morris

steve.morris@morcoreengineering.com
E-mail Address

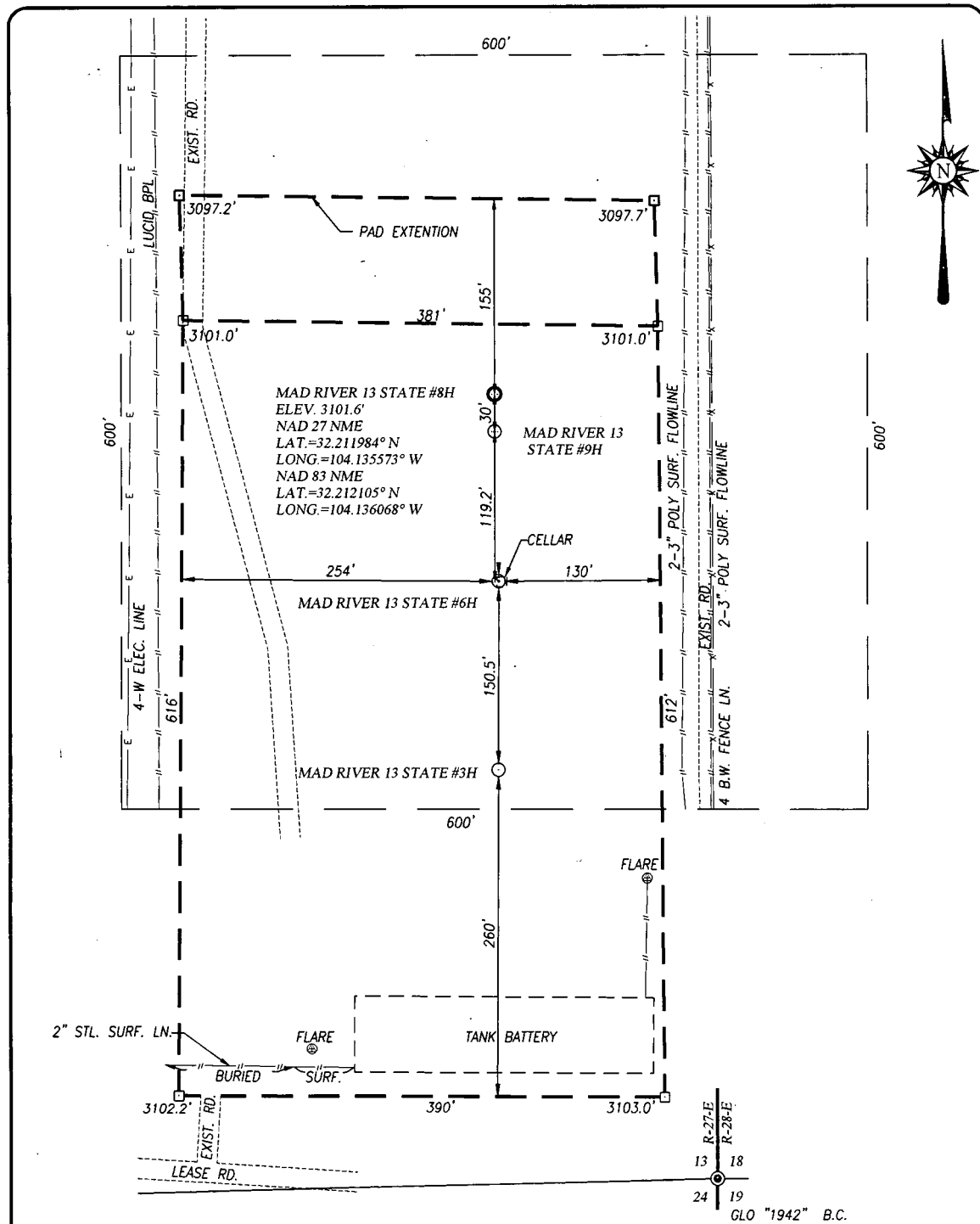
SURVEYOR CERTIFICATION

I hereby certify that the well location shown on this plat was plotted from field notes of actual surveys made by me or under my supervision, and that the same is true and correct to the best of my belief.

NOVEMBER 13, 2018

Date of Survey
Signature & Seal of Professional Surveyor:

RONALD J. EIDSON
NEW MEXICO
REGISTERED
3239
Certificate Number... Gary C. Eidson 12641
Ronald J. Eidson 3239
L.S.L. NWSO W.O.: 18.11.1238



NOTE:

- 1) SEE "TOPOGRAPHICAL AND ACCESS ROAD MAP" FOR PROPOSED ROAD LOCATION.

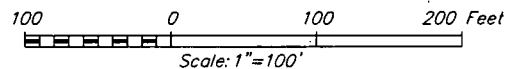
DIRECTIONS TO LOCATION:

FROM THE INTERSECTION OF U.S. HWY. 285 AND CO. RD. 720, GO WEST ON CO. RD. 720 FOR APPROX. 2.7 MILES. THEN AT INTERSECTION OF CO. RD. 720 & CO. RD. 774, TURN LEFT AND GO SOUTHWEST ON CO. RD. 774 FOR APPROX. 1.5 MILES. TURN RIGHT AND GO WEST ON LEASE ROAD FOR APPROX. 0.15 MILES. TURN RIGHT AND GO NORTH APPROX. 0.16 MILES TO TEE. TURN RIGHT AND GO EAST APPROX. 85 FEET. TURN LEFT AND GO NORTH APPROX. 67 FEET TO WELL PAD.

PROVIDING SURVEYING SERVICES
SINCE 1946

JOHN WEST SURVEYING COMPANY

412 N. DAL PASO HOBBS, N.M. 88240
(575) 393-3117 www.jwsc.biz
TBPLS# 10021000



CAZA OPERATING, LLC

MAD RIVER 13 STATE #8H WELL LOCATED 630 FEET FROM THE SOUTH LINE AND 175 FEET FROM THE EAST LINE OF SECTION 13, TOWNSHIP 24 SOUTH, RANGE 27 EAST, N.M.P.M., EDDY COUNTY, NEW MEXICO

Survey Date: 11/13/18	CAD Date: 12/14/18	Drawn By: LSL
W.O. No.: 18111238	Rev.:	Rel. W.O.:

Sheet 1 of 1

RECEIVED

MAY 28 2019

Form C-102

Revised August 1, 2011

Submit one copy to appropriate District Office

DISTRICT I
1625 N. French Dr., Hobbs, NM 88240
Phone: (575) 393-6161 Fax: (575) 393-0720

DISTRICT II
811 S. First St., Artesia, NM 88210
Phone: (575) 748-1283 Fax: (575) 748-9720

DISTRICT III
1000 Rio Brazos Road, Aztec, NM 87410
Phone: (505) 334-6178 Fax: (505) 334-6170

DISTRICT IV
1220 S. St. Francis Dr., Santa Fe, NM 87505
Phone: (505) 476-3460 Fax: (505) 476-3462

State of New Mexico
Energy, Minerals & Natural Resources Department

OIL CONSERVATION DIVISION

DISTRICT II-ARTESIA O.C.D.

1220 South St. Francis Dr.
Santa Fe, New Mexico 87505

AMENDED REPORT

WELL LOCATION AND ACREAGE DEDICATION PLAT

API Number	Pool Code	Pool Name
Property Code	Property Name MAD RIVER 13 STATE	Well Number 8H
OGRID No.	Operator Name CAZA OPERATING, LLC	Elevation 3102'

Surface Location

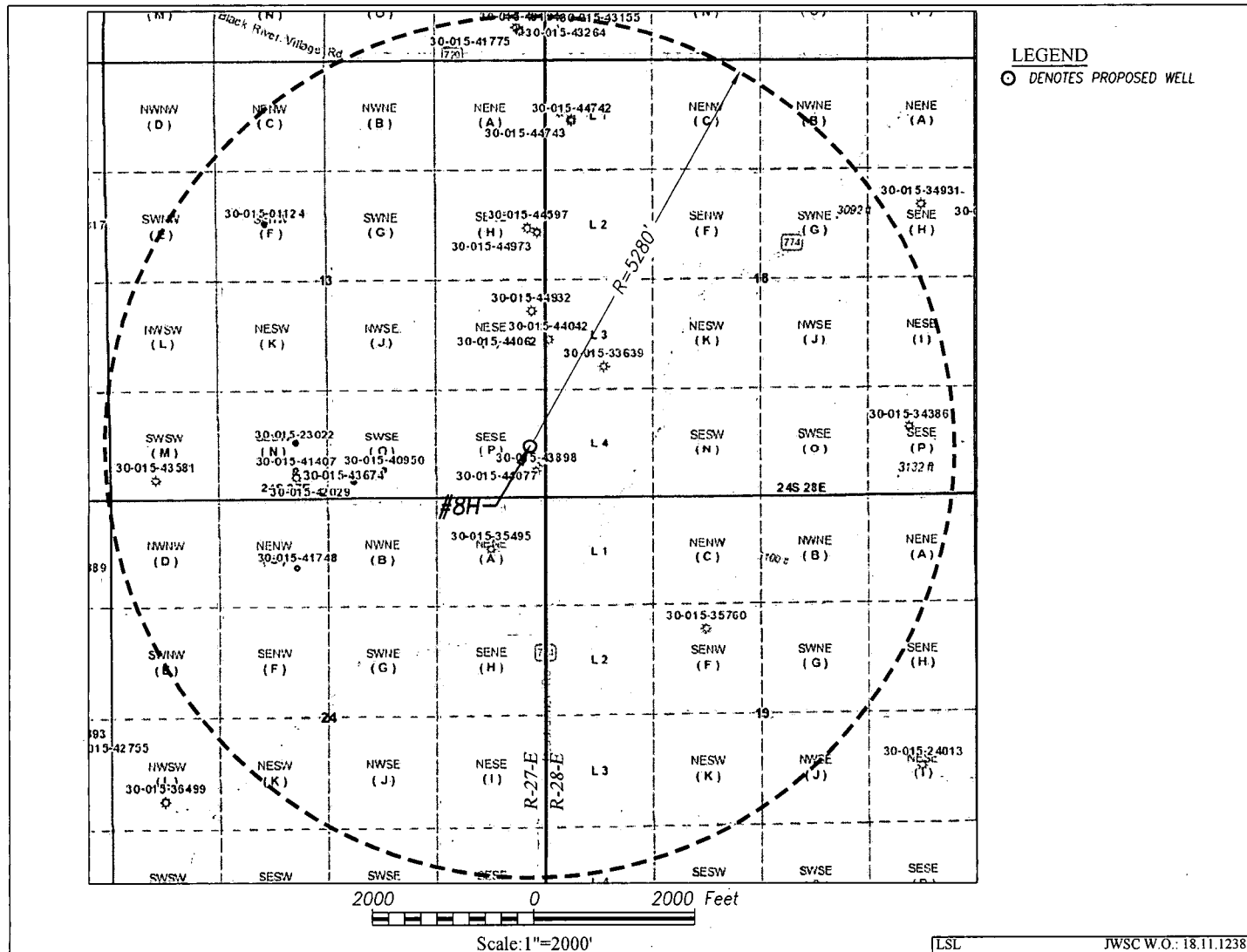
UL or lot No.	Section	Township	Range	Lot Idn	Feet from the	North/South line	Feet from the	East/West line	County
P	13	24-S	27-E		630	SOUTH	175	EAST	EDDY

Bottom Hole Location If Different From Surface

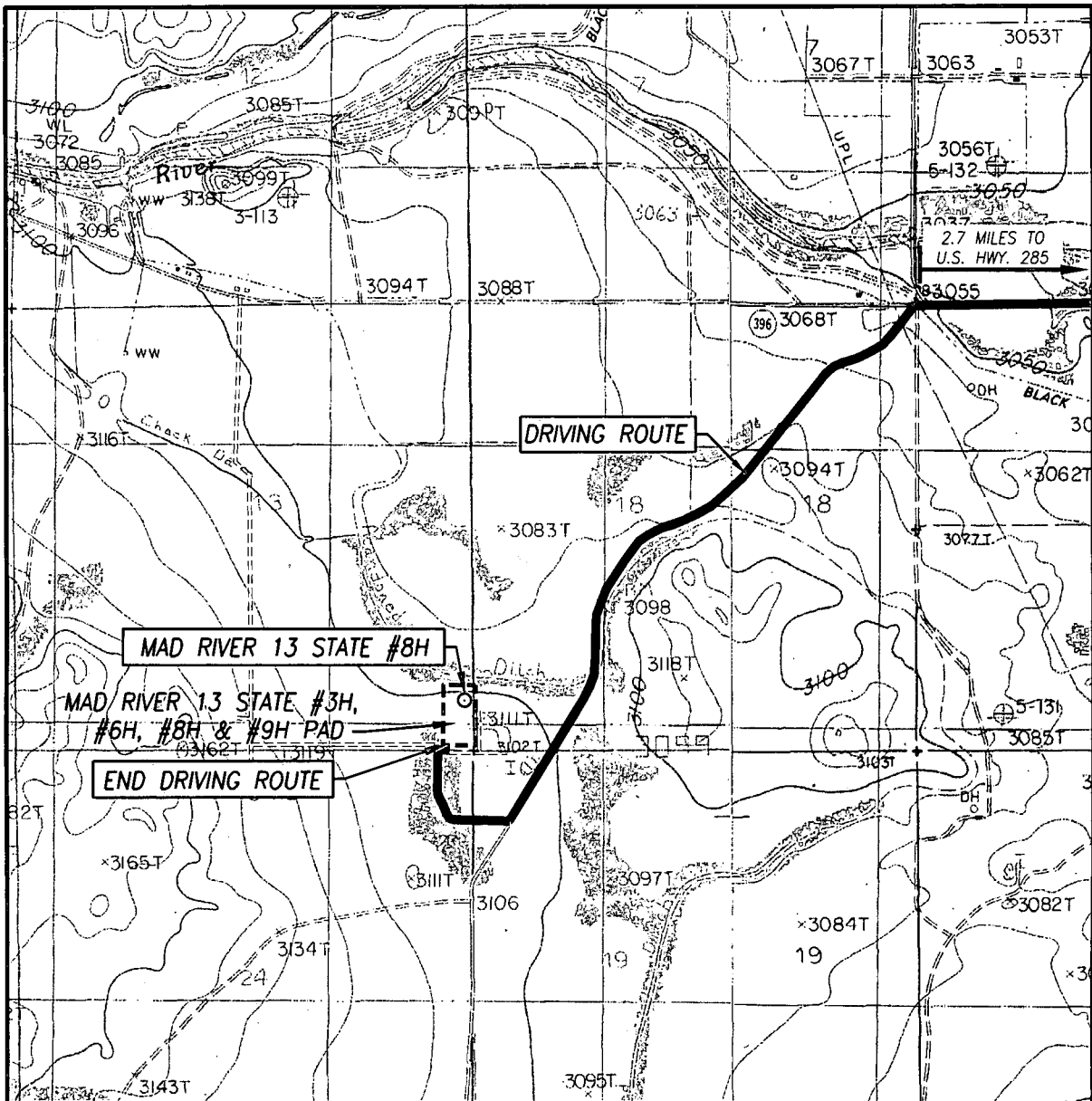
UL or lot No.	Section	Township	Range	Lot Idn	Feet from the	North/South line	Feet from the	East/West line	County
M	13	24-S	27-E		1000	SOUTH	270	WEST	EDDY

Dedicated Acres	Joint or Infill	Consolidation Code	Order No.

NO ALLOWABLE WILL BE ASSIGNED TO THIS COMPLETION UNTIL ALL INTERESTS HAVE BEEN CONSOLIDATED OR A NON-STANDARD UNIT HAS BEEN APPROVED BY THE DIVISION



TOPOGRAPHIC AND ACCESS ROAD MAP



SCALE: 1" = 2000'

CONTOUR INTERVAL:
BOND DRAW, N.M. - 10'
MALAGA, N.M. - 10'

SEC. 13 TWP. 24-S RGE. 27-E

SURVEY N.M.P.M.

COUNTY EDDY STATE NEW MEXICO

DESCRIPTION 630' FSL & 175' FEL

ELEVATION 3102'

OPERATOR CAZA OPERATING, LLC

LEASE MAD RIVER 13 STATE

U.S.G.S. TOPOGRAPHIC MAP

BOND DRAW, N.M.

DIRECTIONS TO LOCATION:

FROM THE INTERSECTION OF U.S. HWY. 285 AND CO. RD. 720, GO WEST ON CO. RD. 720 FOR APPROX. 2.7 MILES. THEN AT INTERSECTION OF CO. RD. 720 & CO. RD. 774, TURN LEFT AND GO SOUTHWEST ON CO. RD. 774 FOR APPROX. 1.5 MILES. TURN RIGHT AND GO WEST ON LEASE ROAD FOR APPROX. 0.15 MILES. TURN RIGHT AND GO NORTH APPROX. 0.16 MILES TO TEE, TURN RIGHT AND GO EAST APPROX. 85 FEET. TURN LEFT AND GO NORTH APPROX. 67 FEET TO WELL PAD.



PROVIDING SURVEYING SERVICES
SINCE 1946

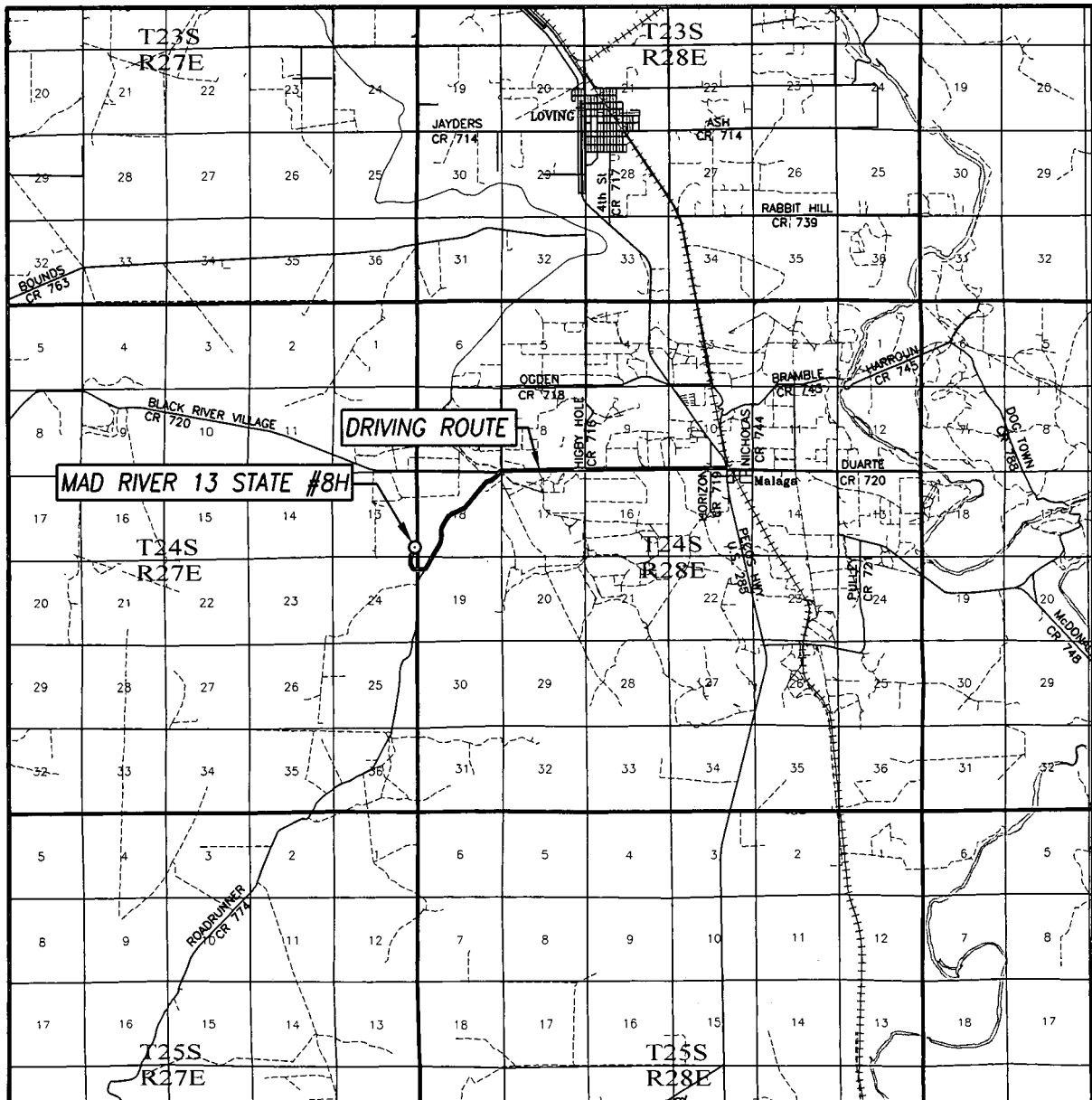
JOHN WEST SURVEYING COMPANY

412 N. DAL PASO HOBBS, N.M. 88240

(575) 393-3117 www.jwsc.biz

TBPLS# 10021000

VICINITY MAP



SCALE: 1" = 2 MILES

DRIVING ROUTE: SEE TOPOGRAPHICAL AND ACCESS ROAD MAP

SEC. 13 TWP. 24-S RGE. 27-E

SURVEY N.M.P.M.

COUNTY EDDY STATE NEW MEXICO

DESCRIPTION 630' FSL & 175' FEL

ELEVATION 3102'

OPERATOR CAZA OPERATING, LLC

LEASE MAD RIVER 13 STATE

PROVIDING SURVEYING SERVICES
SINCE 1946

JOHN WEST SURVEYING COMPANY

412 N. DAL PASO HOBBS, N.M. 88240
(575) 393-3117 www.jwsc.biz
TBPLS# 10021000

Project: Mad River 13 State 8H
 Site: Mad River 13 State 8H
 Well: Mad River 13 State 8H
 Wellbore: Mad River 13 State 8H
 Design: 190214 Mad River 13 State 8H



Caza
Petroleum



Azimuths to Grid North
 True North: -0.10°
 Magnetic North: 6.80°

Magnetic Field
 Strength: 47787.8snT
 Dip Angle: 59.89°
 Date: 2/14/2019
 Model: IGRF2010

CASING DETAILS

TVD	MD	Name	Size
120.0	120.0	20" Conductor	20
728.0	728.0	13 3/8"	13-3/8
7970.0	7987.6	9 5/8"	9-5/8
10192.1	15270.0	5 1/2"	5-1/2

FORMATION TOP DETAILS

TVDPath	MDPath	Formation	DipAngle	DipDir
753.0	753.0	Salado	0.00	
2208.0	2208.0	Base of Salt	0.00	
2413.0	2413.0	Delaware	0.00	
3048.0	3048.0	Cherry Canyon	0.00	
4349.0	4349.0	Brushy Canyon	0.00	
5939.0	5945.4	Bone Spring	0.00	
6896.0	6907.6	1st Bone Spring Sand	0.00	
7641.0	7656.7	2nd Bone Spring Sand	0.00	
7831.0	7847.8	2nd Bone Spring Sand Base	0.00	
8272.0	8291.2	Harkey	0.00	
8800.0	8822.1	3rd Bone Spring Sand	0.00	
9148.0	9172.0	Wolfcamp	0.00	
9672.0	9697.7	Wolfcamp B	0.00	
10053.0	10091.4	Wolfcamp C	0.00	

