

JUN 10 2019

Revised August 1, 2011

District Office

☐ AMENDED REPORT

State of New Mexico
Energy, Minerals & Natural Resources Department
OIL CONSERVATION DIVISION
1220 South St. Francis Dr.
Santa Fe, NM 87505

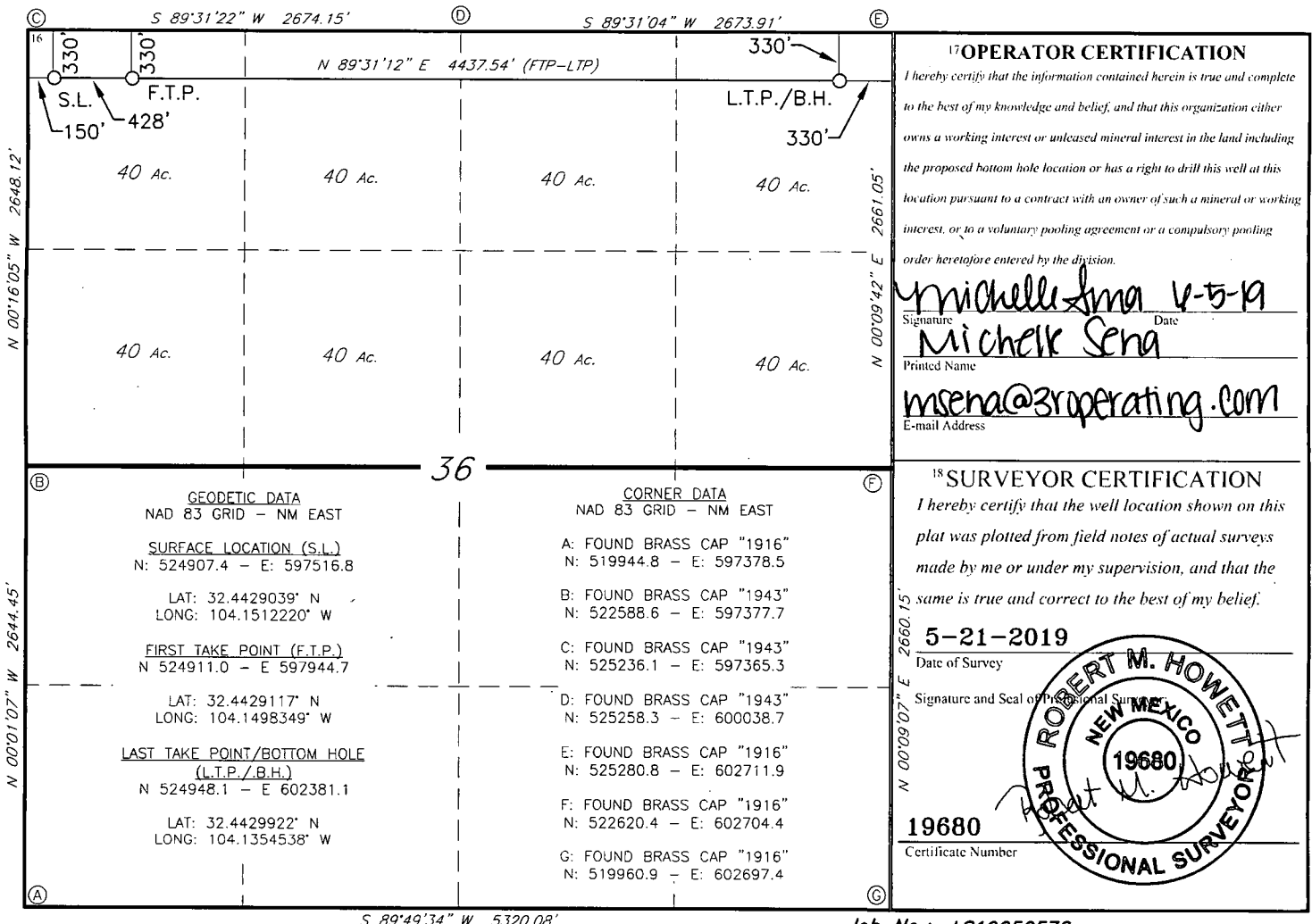
¹ API Number 30-015-46023	² Pool Code 74160	³ Pool Name Carlsbad Wd/Fcomp East
⁴ Property Code 325725	⁵ Property Name WINNIPEG 36 STATE W	⁶ Well Number 1H
⁷ OGRID NO. 373013	⁸ Operator Name RIDGE RUNNER RESOURCES OPERATING, LLC.	⁹ Elevation 3113'

UL or lot no.	Section	Township	Range	Lot Idn	Feet from the	North/South line	Feet From the	East/West line	County
D	36	21S	27E		330	NORTH	150	WEST	EDDY

UL or lot no.	Section	Township	Range	Lot Idn	Feet from the	North/South line	Feet from the	East/West line	County
A	36	21S	27E		330	NORTH	330	EAST	EDDY

12 Dedicated Acres 320	13 Joint or Infill	14 Consolidation Code	15 Order No.
----------------------------------	--------------------	-----------------------	--------------

No allowable will be assigned to this completion until all interest have been consolidated or a non-standard unit has been approved by the division.



Job No.: LS19050578

RECEIVED

District I
1625 N. French Dr., Hobbs, NM 88240
Phone: (575) 393-6161 Fax: (575) 393-0720
District II
811 S. First St., Artesia, NM 88210
Phone: (575) 748-1283 Fax: (575) 748-9720
District III
1000 Rio Brazos Road, Aztec, NM 87410
Phone: (505) 334-6178 Fax: (505) 334-6170
District IV
1220 S. St. Francis Dr., Santa Fe, NM 87505
Phone: (505) 476-3460 Fax: (505) 476-3462

State of New Mexico
Energy, Minerals & Natural Resources Department
OIL CONSERVATION DIVISION
1220 South St. Francis Dr.
Santa Fe, NM 87505

JUN 10 2019

Form C-102

Revised August 1, 2011

DISTRICT II-ARTESIA O.C.D.

Submit one copy to appropriate
District Office

☐ AMENDED REPORT

WELL LOCATION AND ACREAGE DEDICATION PLAT

¹ API Number 30-015-46044	² Pool Code 74160	³ Pool Name Carlsbad Wolfcamp East
⁴ Property Code	⁵ Property Name WINNIPEG 36 STATE W	⁶ Well Number 2H
⁷ OGRID NO.	⁸ Operator Name RIDGE RUNNER RESOURCES OPERATING, LLC.	⁹ Elevation 3099'

¹⁰ Surface Location

UL or lot no.	Section	Township	Range	Lot Idn	Feet from the	North/South line	Feet From the	East/West line	County
M	36	21S	27E		455	SOUTH	100	WEST	EDDY

¹¹ Bottom Hole Location If Different From Surface

UL or lot no.	Section	Township	Range	Lot Idn	Feet from the	North/South line	Feet from the	East/West line	County
P	36	21S	27E		330	SOUTH	330	EAST	EDDY

¹² Dedicated Acres 320	¹³ Joint or Infill	¹⁴ Consolidation Code	¹⁵ Order No.
---	-------------------------------	----------------------------------	-------------------------

No allowable will be assigned to this completion until all interest have been consolidated or a non-standard unit has been approved by the division.

<p>① GEODETIC DATA NAD 83 GRID - NM EAST</p> <p>SURFACE LOCATION (S.L.) N: 520400.0 - E: 597478.4</p> <p>LAT: 32.4305141° N LONG: 104.1513715° W</p> <p>FIRST TAKE POINT (F.T.P.) N: 520276.4 - E: 597956.3</p> <p>LAT: 32.4301723° N LONG: 104.1498232° W</p> <p>LAST TAKE POINT/BOTTOM HOLE (L.T.P./B.H.) N: 520289.8 - E: 602368.3</p> <p>LAT: 32.4301874° N LONG: 104.1355232° W</p>	<p>② CORNER DATA NAD 83 GRID - NM EAST</p> <p>A: FOUND BRASS CAP "1916" N: 519944.8 - E: 597378.5</p> <p>B: FOUND BRASS CAP "1943" N: 522588.6 - E: 597377.7</p> <p>C: FOUND BRASS CAP "1943" N: 525236.1 - E: 597365.3</p> <p>D: FOUND BRASS CAP "1943" N: 525258.3 - E: 600038.7</p> <p>E: FOUND BRASS CAP "1916" N: 525280.8 - E: 602711.9</p> <p>F: FOUND BRASS CAP "1916" N: 522620.4 - E: 602704.4</p> <p>G: FOUND BRASS CAP "1916" N: 519960.9 - E: 602697.4</p>	<p>③ OPERATOR CERTIFICATION I hereby certify that the information contained herein is true and complete to the best of my knowledge and belief, and that this organization either owns a working interest or unleased mineral interest in the land including the proposed bottom hole location or has a right to drill this well at this location pursuant to a contract with an owner of such a mineral or working interest, or to a voluntary pooling agreement or a compulsory pooling order heretofore entered by the division.</p> <p><i>Michelle Sena</i> 6-5-19 Signature Date Michelle Sena Printed Name mseha@3roperating.com E-mail Address</p>
<p>④ 36</p> <p>40 Ac. 40 Ac. 40 Ac. 40 Ac.</p> <p>100' S.L. 494'</p> <p>455' 330' F.T.P.</p> <p>578'</p> <p>N 89°49'34" E 4413.06' (FTP-LTP)</p> <p>N 89°49'34" W 5320.08'</p>	<p>⑤ 36</p> <p>40 Ac. 40 Ac. 40 Ac. 40 Ac.</p> <p>330' L.T.P./B.H.</p> <p>330'</p>	<p>⑥ SURVEYOR CERTIFICATION I hereby certify that the well location shown on this plat was plotted from field notes of actual surveys made by me or under my supervision, and that the same is true and correct to the best of my belief.</p> <p>5-21-2019 Date of Survey</p> <p>Signature and Seal of Professional Surveyor</p> <p>19680 Certificate Number</p> <p>Job No.: LS19050579</p>