

DISTRICT I  
1625 N. French Dr., Hobbs, NM 88240  
Phone: (575) 393-6161 Fax: (575) 393-0720

DISTRICT II  
811 S. First St., Artesia, NM 88210  
Phone: (575) 748-1283 Fax: (575) 748-9720

DISTRICT III  
1000 Rio Pecos Road, Aztec, NM 87410  
Phone: (505) 334-6178 Fax: (505) 334-6170

DISTRICT IV  
1220 S. St. Francis Dr., Santa Fe, NM 87505  
Phone: (505) 476-3460 Fax: (505) 476-3462

State of New Mexico  
Energy, Minerals & Natural Resources Department  
**OIL CONSERVATION DIVISION**  
1220 South St. Francis Dr.  
Santa Fe, New Mexico 87505

Form C-102  
Revised August 1, 2011  
Submit one copy to appropriate  
District Office

JUN 25 2019

AMENDED REPORT

**WELL LOCATION AND ACREAGE DISTRICT II-ARTESIA O.C.D.**

API Number <b>30-015-45395</b>	Pool Code <b>98220</b>	Pool Name <b>PURPLE SAGE/WOLF CAMP</b>
Property Code	Property Name <b>OGDEN 29-32 FEDERAL COM</b>	Well Number <b>4H</b>
OGRID No. <b>260297</b>	Operator Name <b>BTA OIL PRODUCERS, LLC</b>	Elevation <b>3074'</b>

Surface Location

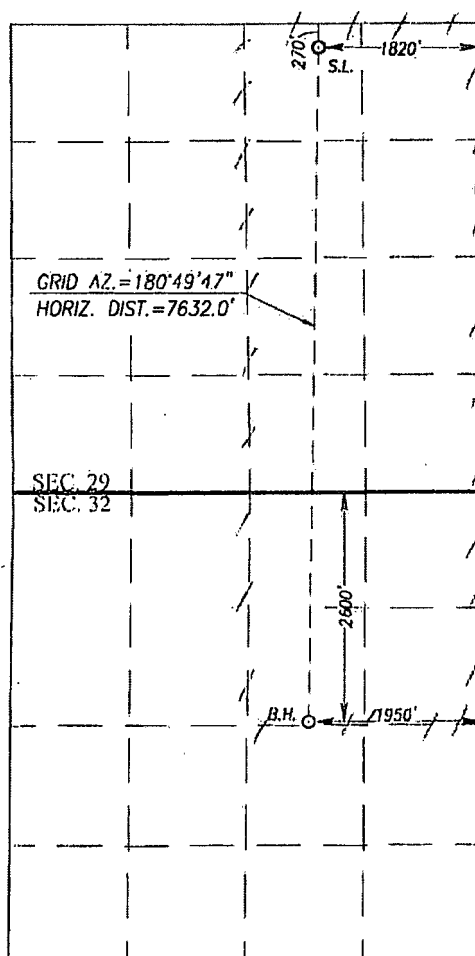
UL or lot No.	Section	Township	Range	Lot Idn	Feet from the	North/South line	Feet from the	East/West line	County
B	29	23-S	28-E		270	NORTH	1820	EAST	EDDY

Bottom Hole Location If Different From Surface

UL or lot No.	Section	Township	Range	Lot Idn	Feet from the	North/South line	Feet from the	East/West line	County
G	32	23-S	28-E		2600	NORTH	1950	EAST	EDDY

Dedicated Acres	Joint or Infill	Consolidation Code	Order No.
<b>4.80</b>			

NO ALLOWABLE WILL BE ASSIGNED TO THIS COMPLETION UNTIL ALL INTERESTS HAVE BEEN CONSOLIDATED OR A NON-STANDARD UNIT HAS BEEN APPROVED BY THE DIVISION



SCALE: 1"=2000'

GEODETIC COORDINATES  
NAD 83 NME  
SURFACE LOCATION  
Y = 466606.9 N  
X = 611324.6 E  
LAT. = 32.282574° N  
LONG. = 104.106863° W

GEODETIC COORDINATES  
NAD 27 NME  
SURFACE LOCATION  
Y = 466548.0 N  
X = 570141.8 E  
LAT. = 32.282453° N  
LONG. = 104.106367° W

CORNER COORDINATES TABLE  
NAD 27 NME

A - Y = 466815.6 N, X = 569296.7 E  
B - Y = 466819.1 N, X = 570628.4 E  
C - Y = 461515.2 N, X = 569367.1 E  
D - Y = 461520.8 N, X = 570677.4 E  
E - Y = 458880.6 N, X = 569337.6 E  
F - Y = 458882.4 N, X = 570659.0 E

CORNER COORDINATES TABLE  
NAD 83 NME

A - Y = 466874.6 N, X = 610479.4 E  
B - Y = 466878.1 N, X = 611811.1 E  
C - Y = 461574.1 N, X = 610549.9 E  
D - Y = 461579.7 N, X = 611860.3 E  
E - Y = 458939.3 N, X = 610520.5 E  
F - Y = 458941.2 N, X = 611841.9 E

BOTTOM HOLE LOCATION  
NAD 83 NME  
Y = 458977.5 N  
X = 611214.1 E  
LAT. = 32.261602° N  
LONG. = 104.107272° W

BOTTOM HOLE LOCATION  
NAD 27 NME  
Y = 458918.7 N  
X = 570031.1 E  
LAT. = 32.261481° N  
LONG. = 104.106778° W

OPERATOR CERTIFICATION

I hereby certify that the information herein is true and complete to the best of my knowledge and belief, and that this organization either owns a working interest or unleased mineral interest in the land including the proposed bottom hole location or has a right to drill this well at this location pursuant to a contract with an owner of such mineral or working interest, or to a voluntary pooling agreement or a compulsory pooling order heretofore entered by the division

Signature: *Katy Reddell* Date: *4/11/19*  
Printed Name: **KATY REDDELL**  
E-mail Address: *Kreddell@btaoil.com*

SURVEYOR CERTIFICATION

I hereby certify that the well location shown on this plat was plotted from the data of a survey made by me or under my supervision, and that the same is true and correct to the best of my knowledge

Date of Survey: *4/10/2019*  
Signature: *Ronald J. Eidson*  
Professional Surveyor: **3239**  
Certificate Number: **3239**  
Gary G. Eidson 12641  
Ronald J. Eidson 3239  
LSL JWSC W.O.: 19.11.0218