

District I  
1625 N. French Dr., Hobbs, NM 88240  
Phone: (575) 393-6161 Fax: (575) 393-0720  
District II  
811 S. First St., Artesia, NM 88210  
Phone: (575) 748-1283 Fax: (575) 748-9720  
District III  
1000 Rio Brazos Road, Aztec, NM 87410  
Phone: (505) 334-6178 Fax: (505) 334-6170  
District IV  
1220 S. St. Francis Dr., Santa Fe, NM 87505  
Phone: (505) 476-3460 Fax: (505) 476-3462

State of New Mexico  
Energy, Minerals & Natural Resources Department  
OIL CONSERVATION DIVISION  
1220 South St. Francis Dr.  
Santa Fe, NM 87505

Form C-102  
Revised August 1, 2011  
Submit one copy to appropriate  
District Office

☐ AMENDED REPORT

WELL LOCATION AND ACREAGE DEDICATION PLAT

|  |  |  |
|--|--|--|
| <sup>1</sup> API Number<br><b>30-015-46182</b> | <sup>2</sup> Pool Code<br><b>98220</b>                               | <sup>3</sup> Pool Name<br><b>PURPLE SAGE; WOLFCAMP GAS</b> |
| <sup>4</sup> Property Code<br><b>325742</b>    | <sup>5</sup> Property Name<br><b>WILLOW LAKE 35 WODM FEDERAL COM</b> |  |
| <sup>7</sup> GRID NO.<br><b>14744</b>          | <sup>8</sup> Operator Name<br><b>MEWBOURNE OIL COMPANY</b>           | <sup>6</sup> Well Number<br><b>1H</b>                      |
|  |  | <sup>9</sup> Elevation<br><b>2970'</b>                     |

<sup>10</sup> Surface Location

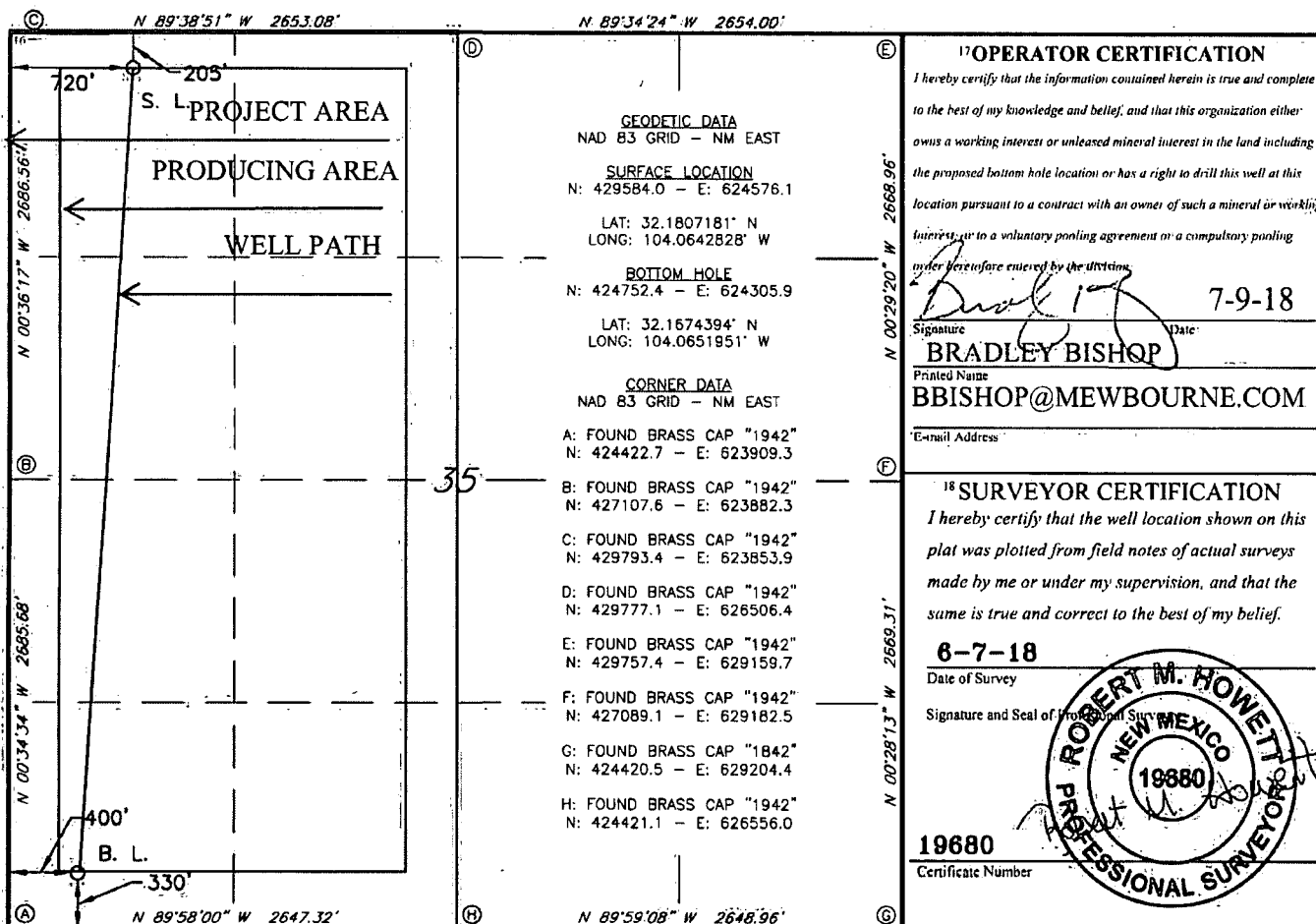
| UL or lot no. | Section   | Township   | Range      | Lot Idn | Feet from the | North/South line | Feet from the | East/West line | County      |
|---------------|-----------|------------|------------|---------|---------------|------------------|---------------|----------------|-------------|
| <b>D</b>      | <b>35</b> | <b>24S</b> | <b>28E</b> |         | <b>205</b>    | <b>NORTH</b>     | <b>720</b>    | <b>WEST</b>    | <b>EDDY</b> |

<sup>11</sup> Bottom Hole Location If Different From Surface

| UL or lot no. | Section   | Township   | Range      | Lot Idn | Feet from the | North/South line | Feet from the | East/West line | County      |
|---------------|-----------|------------|------------|---------|---------------|------------------|---------------|----------------|-------------|
| <b>M</b>      | <b>35</b> | <b>24S</b> | <b>28E</b> |         | <b>330</b>    | <b>SOUTH</b>     | <b>400</b>    | <b>WEST</b>    | <b>EDDY</b> |

|   |                               |                                  |                         |
|---|-------------------------------|----------------------------------|-------------------------|
| <sup>12</sup> Dedicated Acres<br><b>320</b> | <sup>13</sup> Joint or Infill | <sup>14</sup> Consolidation Code | <sup>15</sup> Order No. |
|---|-------------------------------|----------------------------------|-------------------------|

No allowable will be assigned to this completion until all interest have been consolidated or a non-standard unit has been approved by the division.



RRC-Job No.: LS1806753

RWP 7-7-19



U.S. Department of the Interior  
BUREAU OF LAND MANAGEMENT

## Drilling Plan Data Report

07/09/2019

APD ID: 10400031962

Submission Date: 11/19/2018

Highlighted data  
reflects the most  
recent changes

Operator Name: MEWBOURNE OIL COMPANY

Well Name: WILLOW LAKE 35 W0DM

Well Number: 1H

[Show Final Text](#)

Well Type: CONVENTIONAL GAS WELL

Well Work Type: Drill

### Section 1 - Geologic Formations

| Formation ID | Formation Name   | Elevation | True Vertical Depth | Measured Depth | Lithologies                 | Mineral Resources | Producing Formation |
|--------------|------------------|-----------|---------------------|----------------|-----------------------------|-------------------|---------------------|
| 1            | UNKNOWN          | 2969      | 27                  | 27             |                             | NONE              | No                  |
| 2            | TOP SALT         | 2371      | 598                 | 598            | SALT                        | NONE              | No                  |
| 3            | CASTILE          | 1844      | 1125                | 1125           | SALT                        | NONE              | No                  |
| 4            | BOTTOM SALT      | 559       | 2410                | 2410           | SALT                        | NONE              | No                  |
| 5            | LAMAR            | 364       | 2605                | 2605           | LIMESTONE                   | NATURAL GAS,OIL   | No                  |
| 6            | BELL CANYON      | 334       | 2635                | 2635           | SANDSTONE                   | NATURAL GAS,OIL   | No                  |
| 7            | CHERRY CANYON    | -539      | 3508                | 3508           | SANDSTONE                   | NATURAL GAS,OIL   | No                  |
| 8            | MANZANITA        | -656      | 3625                | 3625           | LIMESTONE                   | NATURAL GAS,OIL   | No                  |
| 9            | BRUSHY CANYON    | -1761     | 4730                | 4730           | SANDSTONE                   | NATURAL GAS,OIL   | No                  |
| 10           | BONE SPRING LIME | -3331     | 6300                | 6300           | LIMESTONE, SHALE            | NATURAL GAS,OIL   | No                  |
| 11           | BONE SPRING 1ST  | -4241     | 7210                | 7210           | SANDSTONE                   | NATURAL GAS,OIL   | No                  |
| 12           | BONE SPRING 2ND  | -5079     | 8048                | 8048           | SANDSTONE                   | NATURAL GAS,OIL   | No                  |
| 13           | BONE SPRING 3RD  | -6191     | 9160                | 9160           | SANDSTONE                   | NATURAL GAS,OIL   | No                  |
| 14           | WOLFCAMP         | -6551     | 9520                | 9520           | LIMESTONE, SHALE, SANDSTONE | NATURAL GAS,OIL   | Yes                 |

### Section 2 - Blowout Prevention