

District I
1625 N. French Dr., Hobbs, NM 88240
Phone: (575) 393-6161 Fax: (575) 393-0720
District II
811 S. First St., Artesia, NM 88210
Phone: (575) 748-1283 Fax: (575) 748-9720
District III
1000 Rio Brazos Road, Aztec, NM 87410
Phone: (505) 334-6178 Fax: (505) 334-6170
District IV
1220 S. St. Francis Dr., Santa Fe, NM 87505
Phone: (505) 476-3460 Fax: (505) 476-3462

State of New Mexico
Energy, Minerals & Natural Resources Department
OIL CONSERVATION DIVISION
1220 South St. Francis Dr.
Santa Fe, NM 87505

Form C-102
Revised August 1, 2011
Submit one copy to appropriate
District Office

☐ AMENDED REPORT

WELL LOCATION AND ACREAGE DEDICATION PLAT

¹ API Number 30-015-45022	² Pool Code 98220	³ Pool Name Purple Sage Wolfcamp
⁴ Property Code 321482	⁵ Property Name RIVERBEND 12-13 FEDERAL COM	⁶ Well Number 30H
⁷ OGRID No. 215099	⁸ Operator Name CIMAREX ENERGY CO.	⁹ Elevation 2937.6

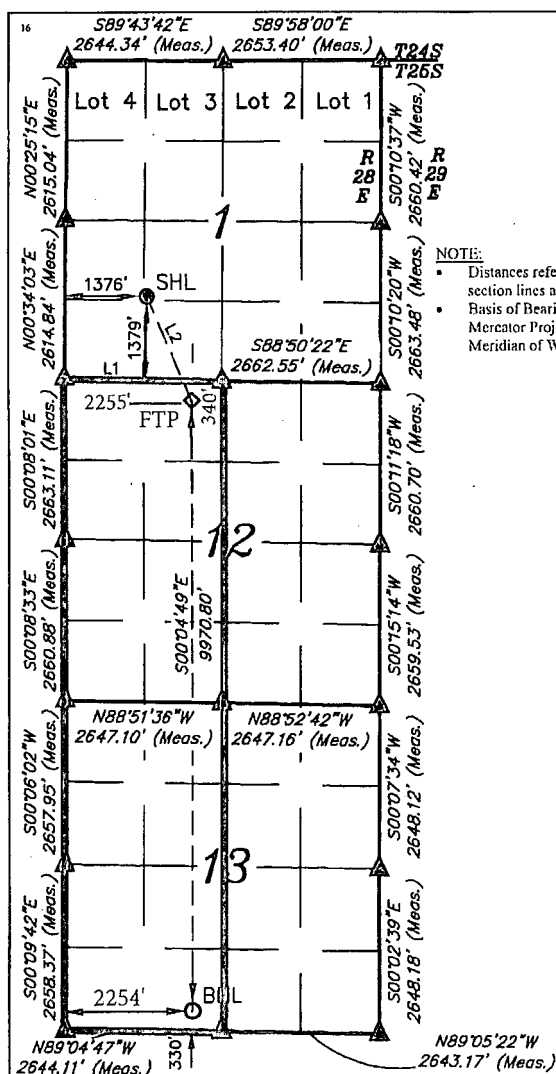
¹⁰ Surface Location

UL or lot no.	Section	Township	Range	Lot Idn	Feet from the	North/South line	Feet from the	East/West line	County
K	I	25S	28E		1379	SOUTH	1376	WEST	EDDY

¹¹ Bottom Hole Location If Different From Surface

UL or lot no.	Section	Township	Range	Lot Idn	Feet from the	North/South line	Feet from the	East/West line	County
N	13	25S	28E		330	SOUTH	2254'	WEST	EDDY
¹² Dedicated Acres 640	¹³ Joint or Infill	¹⁴ Consolidation Code	¹⁵ Order No.						

No allowable will be assigned to this completion until all interests have been consolidated or a non-standard unit has been approved by the division.



NOTE:
Distances referenced on plat to section lines are perpendicular.
Basis of Bearing is a Transverse Mercator Projection with a Central Meridian of W103°53'00"

- = SURFACE HOLE LOCATION
- ◇ = LANDING POINT
- = BOTTOM HOLE LOCATION
- ▲ = SECTION CORNER LOCATED

NAD 83 (SURFACE HOLE LOCATION)
LATITUDE = 32°09'21.01" (32.155836)
LONGITUDE = 104°02'42.01" (104.045003)
NAD 27 (SURFACE HOLE LOCATION)
LATITUDE = 32°09'20.57" (32.155713)
LONGITUDE = 104°02'40.25" (104.044514)
STATE PLANE NAD 83 (N.M. EAST)
N: 420548.00 E: 630564.98
STATE PLANE NAD 27 (N.M. EAST)
N: 420489.72 E: 589380.82

NAD 83 (BOTTOM HOLE LOCATION)
LATITUDE = 32°07'25.31" (32.123697)
LONGITUDE = 104°02'32.71" (104.042419)
NAD 27 (BOTTOM HOLE LOCATION)
LATITUDE = 32°07'24.86" (32.123572)
LONGITUDE = 104°02'30.95" (104.041931)
STATE PLANE NAD 83 (N.M. EAST)
N: 408858.40 E: 631396.62
STATE PLANE NAD 27 (N.M. EAST)
N: 408800.34 E: 590212.18

LINE TABLE		
LINE	DIRECTION	LENGTH
L1	S88°49'54"E	2665.14'
L2	S24°01'51"E	1888.38'



SCALE
DRAWN BY: S.F. 08-09-17

REV: 1 12-18-17 C.D. (SHL CHANGE)

¹⁷ OPERATOR
CERTIFICATION

I hereby certify that the information contained herein is true and complete to the best of my knowledge and belief, and that this organization either owns a working interest or unleased mineral interest in the land including the proposed bottom hole location or has a right to drill this well at this location pursuant to a contract with an owner of such a mineral or working interest, or to a voluntary pooling agreement or a compulsory pooling order heretofore entered by the division.

Amithy Crawford 2/14/19
Signature Date

Amithy Crawford

Printed Name

acrawford@cmarex.com

E-mail Address