

DISTRICT I
1625 N. FRENCH DR., HOBBS, NM 88240
Phone: (575) 393-6161 Fax: (575) 393-0720

DISTRICT II
811 S. FIRST ST., ARTESIA, NM 88210
Phone: (575) 748-1283 Fax: (575) 748-9720

DISTRICT III
1000 RIO BRAZOS RD., AZTEC, NM 87410
Phone: (505) 334-6178 Fax: (505) 334-6170

DISTRICT IV
1220 S. ST. FRANCIS DR., SANTA FE, NM 87505
Phone: (505) 476-3460 Fax: (505) 476-3462

State of New Mexico
Energy, Minerals & Natural Resources Department
OIL CONSERVATION DIVISION
1220 SOUTH ST. FRANCIS DR.
Santa Fe, New Mexico 87505

RECEIVED

JUL 08 2019

Form C-102
Revised August 1, 2011
Submit one copy to appropriate
District Office

DISTRICT II-ARTESIA O.C.D.

☐ AMENDED REPORT

WELL LOCATION AND ACREAGE DEDICATION PLAT

API Number 30-015-45168	Pool Code 98220	Pool Name Purple Sage; Wolfcamp (Gas)
Property Code 322243	Property Name LITTLEFIELD 33 FEDERAL COM	Well Number 807H
OGRID No. 229137	Operator Name COG OPERATING, LLC	Elevation 2863.4'

Surface Location

UL or lot No.	Section	Township	Range	Lot Idn	Feet from the	North/South line	Feet from the	East/West line	County
9	33	26-S	29-E		250	SOUTH	841	WEST	EDDY

Bottom Hole Location If Different From Surface

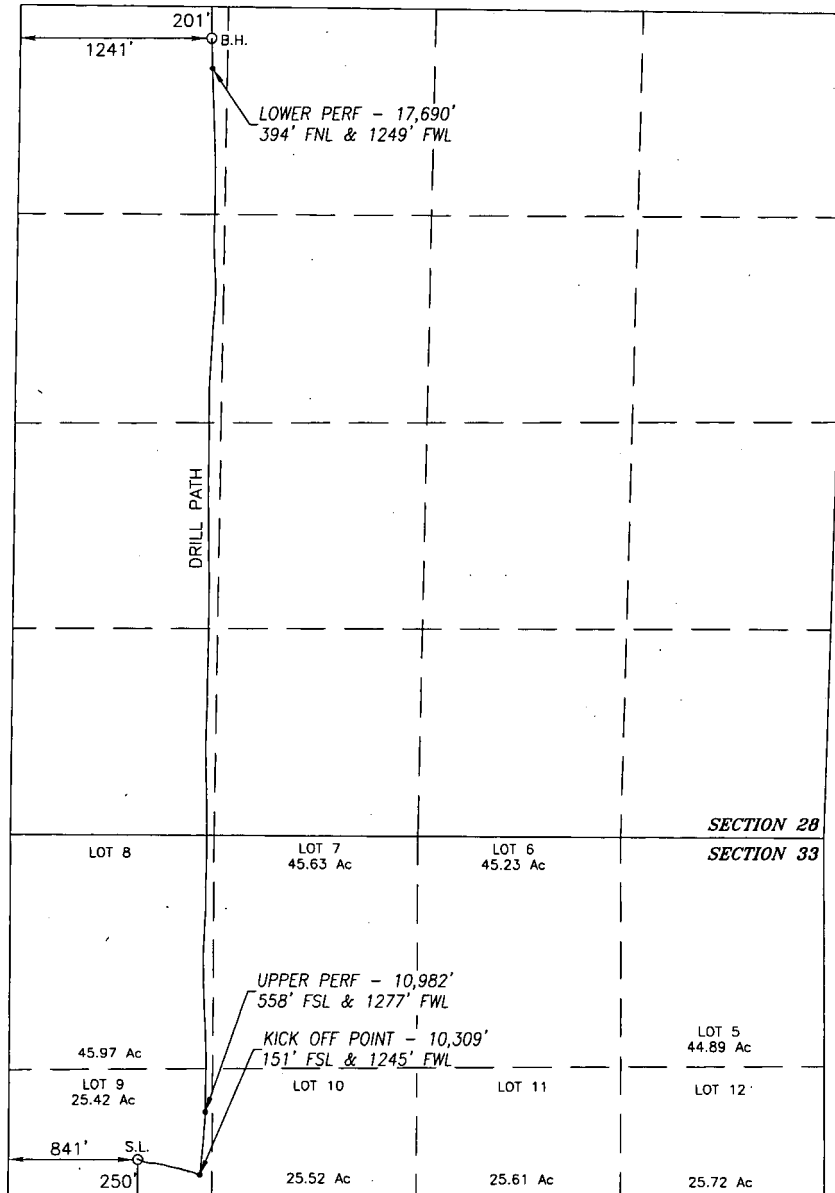
UL or lot No.	Section	Township	Range	Lot Idn	Feet from the	North/South line	Feet from the	East/West line	County
D	28	26-S	29-E		201	NORTH	1241	WEST	EDDY
Dedicated Acres 463.13	Joint or Infill	Consolidation Code	Order No.						

NO ALLOWABLE WILL BE ASSIGNED TO THIS COMPLETION UNTIL ALL INTERESTS HAVE BEEN CONSOLIDATED
OR A NON-STANDARD UNIT HAS BEEN APPROVED BY THE DIVISION

SEE PAGE 2

Property Code 322243	Property Name LITTLEFIELD 33 FEDERAL COM	Well Number 807H
OGRID No. 229137	Operator Name COG OPERATING, LLC	Elevation 2863.4'

NAD 83 NME
BOTTOM
HOLE LOCATION
Y=371395.9 N
X=646532.1 E
LAT.=32.020593° N
LONG.=103.993908° W



NAD 83 NME
SURFACE LOCATION
Y=364195.3 N
X=646066.3 E
LAT.=32.000803° N
LONG.=103.995484° W

RECEIVED

JUL 08 2019

DISTRICT/ARTESIA O.C.D.

BOREPATH SHOWN HEREON IS BASED ON
DIRECTIONAL SURVEY REPORT PROVIDED BY
COG OPERATING, LLC FOR THE LITTLEFIELD 33
FEDERAL COM #807H SUPPLIED TO HARCROW
SURVEYING, LLC ON MAY 31, 2019

1200 0 1200
SCALE: 1"=1200'

OPERATOR CERTIFICATION

I hereby certify that the information herein is true and complete to the best of my knowledge and belief, and that this organization either owns a working interest or unleased mineral interest in the land including the proposed bottom hole location or has a right to drill this well at this location pursuant to a contract with an owner of such mineral or working interest, or to a voluntary pooling agreement or a compulsory pooling order heretofore entered by the division.

Amanda Avery 6/27/19
Signature Date

Amanda Avery

Printed Name

aaavery@concho.com

E-mail Address

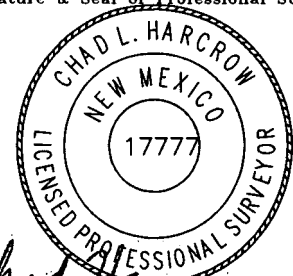
SURVEYOR CERTIFICATION

I hereby certify that the well location shown on this plat was plotted from field notes of actual surveys made by me or under my supervision, and that the same is true and correct to the best of my belief.

SEPT. 12, 2018/DEC. 6, 2018

Date of Survey/Date of Geographic Survey

Signature & Seal of Professional Surveyor



Chad Harcrow 6/5/19
Certificate No. CHAD HARCROW 17777

RECEIVED

Intent ☐ As Drilled ☒

JUL 08 2019

API #
30-015-45168

DISTRICT//ARTESIAO.C.D.

Operator Name:
COG OPERATING, LLCProperty Name:
LITTLEFIELD 33 FEDERAL COMWell Number
807H

Kick Off Point (KOP)

UL	Section	Township	Range	Lot	Feet	From N/S	Feet	From E/W	County
9	33	26S	29E		151	SOUTH	1245	WEST	EDDY
Latitude 32.000531					Longitude -103.994184				NAD 83

First Take Point (FTP)

UL	Section	Township	Range	Lot	Feet	From N/S	Feet	From E/W	County
9	33	26S	29E		558	SOUTH	1277	WEST	EDDY
Latitude 32.001648					Longitude -103.994069				NAD 83

Last Take Point (LTP)

UL	Section	Township	Range	Lot	Feet	From N/S	Feet	From E/W	County
D	28	26S	29E		394	NORTH	1249	WEST	EDDY
Latitude 32.020063					Longitude -103.993891				NAD 83

Is this well the defining well for the Horizontal Spacing Unit?

☐ No

Is this well an infill well?

☒ Yes

If infill is yes please provide API if available, Operator Name and well number for Defining well for Horizontal Spacing Unit.

API #
30-015-45163Operator Name:
COG Operating LLCProperty Name:
Littlefield 33 Federal ComWell Number
706H

KZ 06/29/2018