

District I
1625 N. French Dr., Hobbs, NM 88240
Phone: (575) 393-6161 Fax: (575) 393-0720
District II
811 S. First St., Artesia, NM 88210
Phone: (575) 748-1283 Fax: (575) 748-9720
District III
1000 Rio Brazos Road, Aztec, NM 87410
Phone: (505) 334-6178 Fax: (505) 334-6170
District IV
1220 S. St. Francis Dr., Santa Fe, NM 87505
Phone: (505) 476-3460 Fax: (505) 476-3462

State of New Mexico
Energy, Minerals & Natural Resources
Department
OIL CONSERVATION DIVISION
1220 South St. Francis Dr.
Santa Fe, NM 87505

FORM C-102
Revised August 1, 2011
Submit one copy to appropriate
District Office

☐ AMENDED REPORT

WELL LOCATION AND ACREAGE DEDICATION PLAT

¹ API Number 30-015-46219	² Pool Code 98220	³ Pool Name PURPLE SAGE; WOLFCAMP
⁴ Property Code 326031	⁵ Property Name MONEY GRAHAM FED COM	⁶ Well Number 214H
⁷ OGRID No. 372043	⁸ Operator Name TAP ROCK OPERATING, LLC.	⁹ Elevation 2866'

¹⁰Surface Location

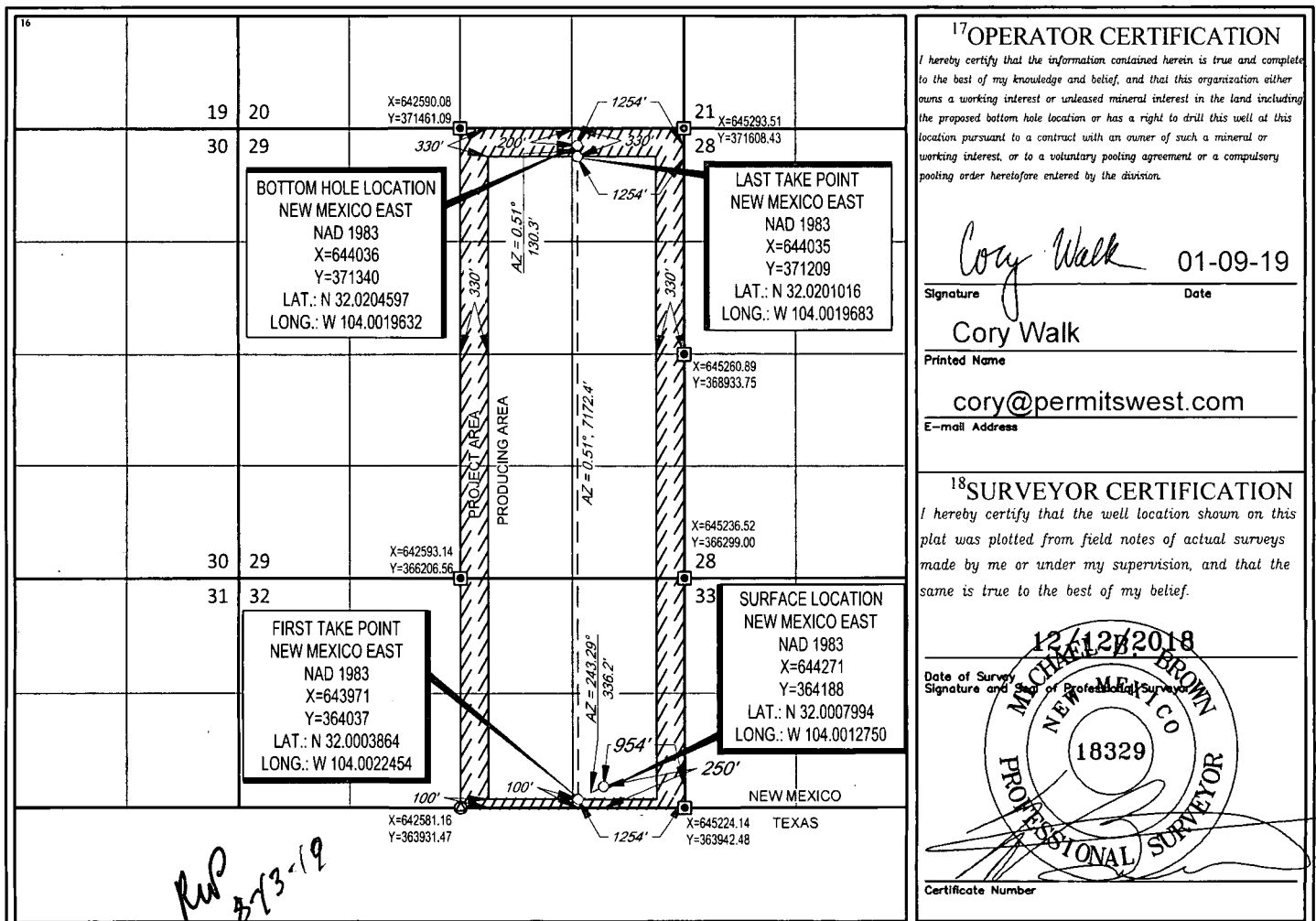
UL or lot no.	Section	Township	Range	Lot Idn	Feet from the	North/South line	Feet from the	East/West line	County
4	32	26-S	29-E	-	250'	SOUTH	954'	EAST	EDDY

¹¹Bottom Hole Location If Different From Surface

UL or lot no.	Section	Township	Range	Lot Idn	Feet from the	North/South line	Feet from the	East/West line	County
A	29	26-S	29-E	-	200'	NORTH	1254'	EAST	EDDY

¹² Dedicated Acres 445.60	¹³ Joint or Infill	¹⁴ Consolidation Code	¹⁵ Order No.
---	-------------------------------	----------------------------------	-------------------------

No allowable will be assigned to this completion until all interests have been consolidated or a non-standard unit has been approved by the division.



¹⁷OPERATOR CERTIFICATION

I hereby certify that the information contained herein is true and complete to the best of my knowledge and belief, and that this organization either owns a working interest or unleased mineral interest in the land including the proposed bottom hole location or has a right to drill this well at this location pursuant to a contract with an owner of such a mineral or working interest, or to a voluntary pooling agreement or a compulsory pooling order heretofore entered by the division.

Cory Walk 01-09-19
Signature Date

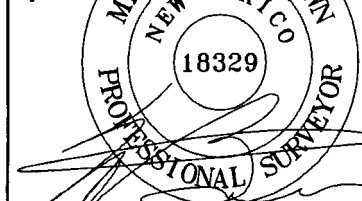
Cory Walk
Printed Name

cory@permitswest.com
E-mail Address

¹⁸SURVEYOR CERTIFICATION

I hereby certify that the well location shown on this plat was plotted from field notes of actual surveys made by me or under my supervision, and that the same is true to the best of my belief.

12/12/2018
Date of Survey
Signature and Seal of Professional Surveyor



Certificate Number

Operator Name: TAP ROCK OPERATING LLC

Well Name: MONEY GRAHAM FED COM

Well Number: 214H

	NS-Foot	NS Indicator	EW-Foot	EW Indicator	Twsp	Range	Section	Aliquot/Lot/Tract	Latitude	Longitude	County	State	Meridian	Lease Type	Lease Number	Elevation	MD	TVD
EXIT Leg #1	200	FNL	125 4	FEL	26S	29E	29	Aliquot NENE	32.02045 97	- 104.0019 632	EDD Y	NEW MEXI CO	NEW MEXI CO	F	NMNM 138607	- 707 4	170 40	994 0
BHL Leg #1	200	FNL	125 4	FEL	26S	29E	29	Aliquot NENE	32.02045 97	- 104.0019 632	EDD Y	NEW MEXI CO	NEW MEXI CO	F	NMNM 138607	- 707 4	170 40	994 0