

UNITED STATES  
DEPARTMENT OF THE INTERIOR  
BUREAU OF LAND MANAGEMENT

OCD Artesia

FORM APPROVED  
OMB No. 1004-0137  
Expires: July 31, 2010

## WELL COMPLETION OR RECOMPLETION REPORT AND LOG

5. Lease Serial No.  
NMNM0438001

1a. Type of Well ☒ Oil Well ☐ Gas Well ☐ Dry ☐ Other  
b. Type of Completion ☒ New Well ☐ Work Over ☐ Deepen ☐ Plug Back ☐ Diff. Resvr.  
Other \_\_\_\_\_

6. If Indian, Allottee or Tribe Name

7. Unit or CA Agreement Name and No.  
NMNM1390082. Name of Operator  
EOG RESOURCES INCORPORATED  
Contact: KAY MADDOX  
E-Mail: kay\_maddox@eogresources.com8. Lease Name and Well No.  
STELLA BLUE 30 FED COM 701H3. Address  
MIDLAND, TX 797023a. Phone No. (include area code)  
Ph: 432-686-36589. API Well No.  
30-015-44920-00-S14. Location of Well (Report location clearly and in accordance with Federal requirements)\*  
At surface SWSW 765FSL 559FWL 32.008148 N Lat, 103.824322 W Lon  
Sec 30 T26S R31E Mer NMP  
At top prod interval reported below SWSW 437FSL 317FWL 32.007240 N Lat, 103.825103 W Lon  
Sec 30 T26S R31E Mer NMP  
At total depth NWNW 667FNL 324FWL 32.033480 N Lat, 103.825105 W Lon  
Sec 19 T26S R31E Mer NMP10. Field and Pool, or Exploratory  
PURPLE SAGE-WOLFCAMP (GAS)11. Sec., T., R., M., or Block and Survey  
or Area Sec 30 T26S R31E Mer NMP12. County or Parish  
EDDY13. State  
NM14. Date Spudded  
07/03/201815. Date T.D. Reached  
08/18/201816. Date Completed  
☐ D & A ☒ Ready to Prod.  
04/20/201917. Elevations (DF, KB, RT, GL)\*  
3069 GL18. Total Depth: MD 21078  
TVD 1129419. Plug Back T.D.: MD 21067  
TVD 1129420. Depth Bridge Plug Set: MD  
TVD

21. Type Electric &amp; Other Mechanical Logs Run (Submit copy of each)

22. Was well cored? ☒ No ☐ Yes (Submit analysis)  
Was DST run? ☒ No ☐ Yes (Submit analysis)  
Directional Survey? ☐ No ☒ Yes (Submit analysis)

## 23. Casing and Liner Record (Report all strings set in well)

Hole Size	Size/Grade	Wt. (#/ft.)	Top (MD)	Bottom (MD)	Stage Cementer Depth	No. of Sk. & Type of Cement	Slurry Vol. (BBL)	Cement Top*	Amount Pulled
17.500	13.375 J55	54.5		1081		960		0	
12.250	9.625 J55	40.0		3648		1010		0	
8.750	7.625 HCP110	29.7		10400		1025		9483	
6.750	5.500 HCP110	20.0		11295		1075		7250	

## 24. Tubing Record

Size	Depth Set (MD)	Packer Depth (MD)	Size	Depth Set (MD)	Packer Depth (MD)	Size	Depth Set (MD)	Packer Depth (MD)

## 25. Producing Intervals

## 26. Perforation Record

Formation	Top	Bottom	Perforated Interval	Size	No. Holes	Perf. Status
A) WOLFCAMP	11500	21067	11500 TO 21067	3.250	2053	OPEN
B)						
C)						
D)						

## 27. Acid, Fracture, Treatment, Cement Squeeze, Etc.

Depth Interval	Amount and Type of Material
11500 TO 21067	24,510,090 LBS PROPPANT, 459,884 BBLS LOAD FLUID

RECEIVED

AUG 21 2019

## 28. Production - Interval A

Date First Produced	Test Date	Hours Tested	Test Production	Oil BBL	Gas MCF	Water BBL	Oil Gravity Corr. API	Gas Gravity	Production Method
04/20/2019	04/24/2019	24	→	2478.0	14430.0	7757.0	44.0		
Choke Size	Tbg. Press. Flwg.	Csg. Press.	24 Hr. Rate	Oil BBL	Gas MCF	Water BBL	Gas:Oil Ratio	Well Status	
64	SI	2513.0	→	2478	14430	7757	5822	POW	

DISTRICT/ARTESIA/O.C.D.

FLOWS FROM WELL

ACCEPTED FOR RECORD

## 28a. Production - Interval B

Date First Produced	Test Date	Hours Tested	Test Production	Oil BBL	Gas MCF	Water BBL	Oil Gravity Corr. API	Gas Gravity	Production Method
			→						
Choke Size	Tbg. Press. Flwg.	Csg. Press.	24 Hr. Rate	Oil BBL	Gas MCF	Water BBL	Gas:Oil Ratio	Well Status	
	SI		→						

(See Instructions and spaces for additional data on reverse side)

ELECTRONIC SUBMISSION #463167 VERIFIED BY THE BLM WELL INFORMATION SYSTEM

\*\* BLM REVISED \*\* BLM REVISED \*\* BLM REVISED \*\* BLM REVISED \*\* BLM REVISED \*\*

Reclamation Due: 10/20/2019

## 28b. Production - Interval C

Date First Produced	Test Date	Hours Tested	Test Production	Oil BBL	Gas MCF	Water BBL	Oil Gravity Corr. API	Gas Gravity	Production Method
			→						
Choke Size	Tbg. Press. Flwg. SI	Csg. Press.	24 Hr. Rate	Oil BBL	Gas MCF	Water BBL	Gas:Oil Ratio	Well Status	
			→						

## 28c. Production - Interval D

Date First Produced	Test Date	Hours Tested	Test Production	Oil BBL	Gas MCF	Water BBL	Oil Gravity Corr. API	Gas Gravity	Production Method
			→						
Choke Size	Tbg. Press. Flwg. SI	Csg. Press.	24 Hr. Rate	Oil BBL	Gas MCF	Water BBL	Gas:Oil Ratio	Well Status	
			→						

29. Disposition of Gas(Sold, used for fuel, vented, etc.)  
SOLD

## 30. Summary of Porous Zones (Include Aquifers):

Show all important zones of porosity and contents thereof: Cored intervals and all drill-stem tests, including depth interval tested, cushion used, time tool open, flowing and shut-in pressures and recoveries.

## 31. Formation (Log) Markers

Formation	Top	Bottom	Descriptions, Contents, etc.	Name	Top Meas. Depth
RUSTLER	1025		BARREN	RUSTLER	1025
TOP SALT	1733		BARREN	TOP SALT	1733
BASE OF SALT	3615		BARREN	RAMSEY	3615
BRUSHY CANYON	5885		OIL & GAS	BRUSHY CANYON	5885
BONE SPRING 1ST	8452		OIL & GAS	BONE SPRING 1ST	8452
BONE SPRING 2ND	9196		OIL & GAS	BONE SPRING 2ND	9196
BONE SPRING 3RD	10463		OIL & GAS	BONE SPRING 3RD	10463
WOLFCAMP	10867		OIL & GAS	WOLFCAMP	10867

32. Additional remarks (include plugging procedure):  
PLEASE REFERENCE ATTACHMENTS

## 33. Circle enclosed attachments:

- |   |                    |               |                       |
|---|--------------------|---------------|-----------------------|
| 1. Electrical/Mechanical Logs (1 full set req'd.)     | 2. Geologic Report | 3. DST Report | 4. Directional Survey |
| 5. Sundry Notice for plugging and cement verification | 6. Core Analysis   | 7 Other:      |                       |

## 34. I hereby certify that the foregoing and attached information is complete and correct as determined from all available records (see attached instructions):

**Electronic Submission #463167 Verified by the BLM Well Information System.**  
**For EOG RESOURCES INCORPORATED, sent to the Carlsbad**  
**Committed to AFMSS for processing by DEBORAH HAM on 04/26/2019 (19DMH0059SE)**

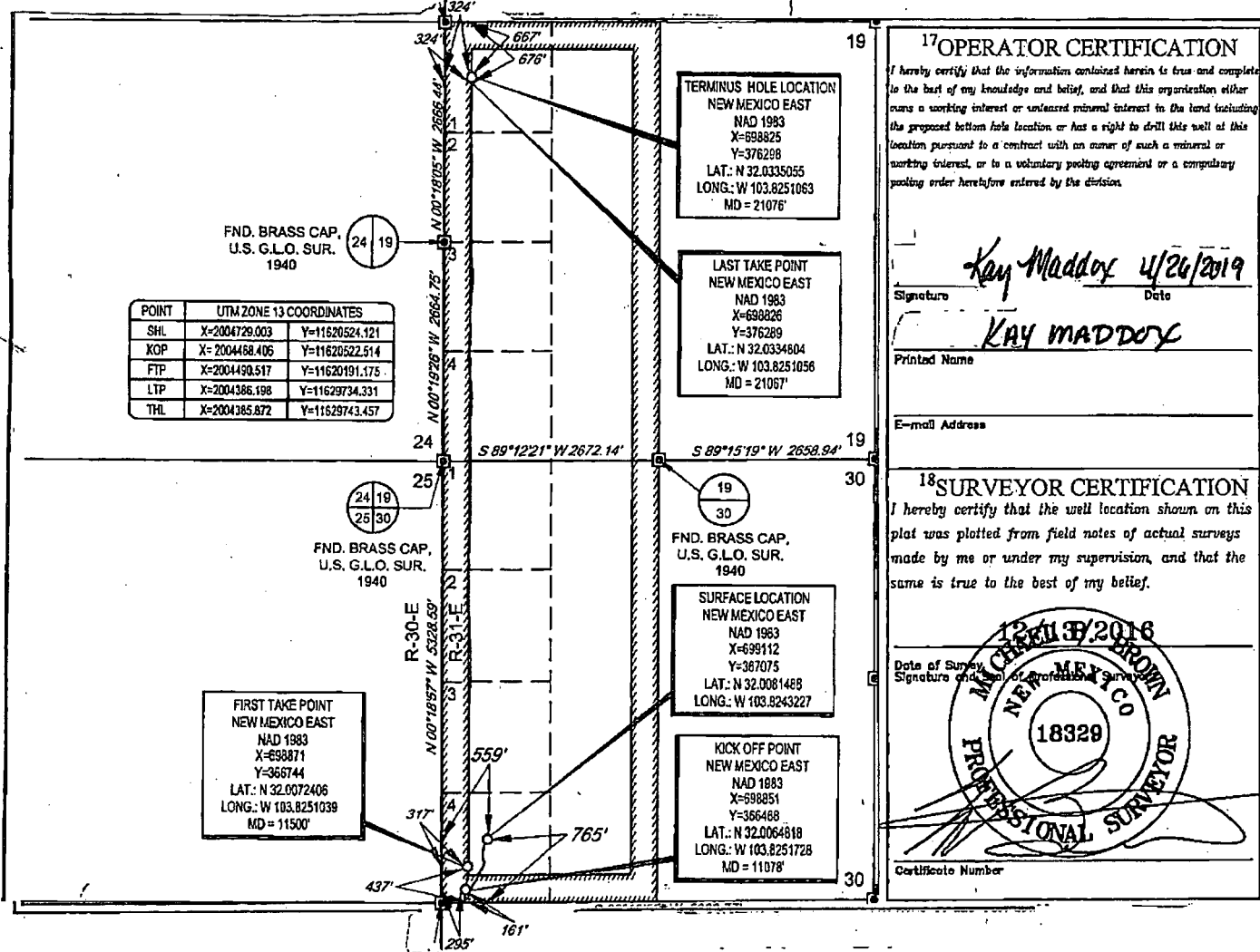
Name (please print) KAY MADDOXTitle REGULATORY SPECIALIST

Signature \_\_\_\_\_ (Electronic Submission)

Date 04/26/2019

Title 18 U.S.C. Section 1001 and Title 43 U.S.C. Section 1212, make it a crime for any person knowingly and willfully to make to any department or agency of the United States any false, fictitious or fraudulent statements or representations as to any matter within its jurisdiction.

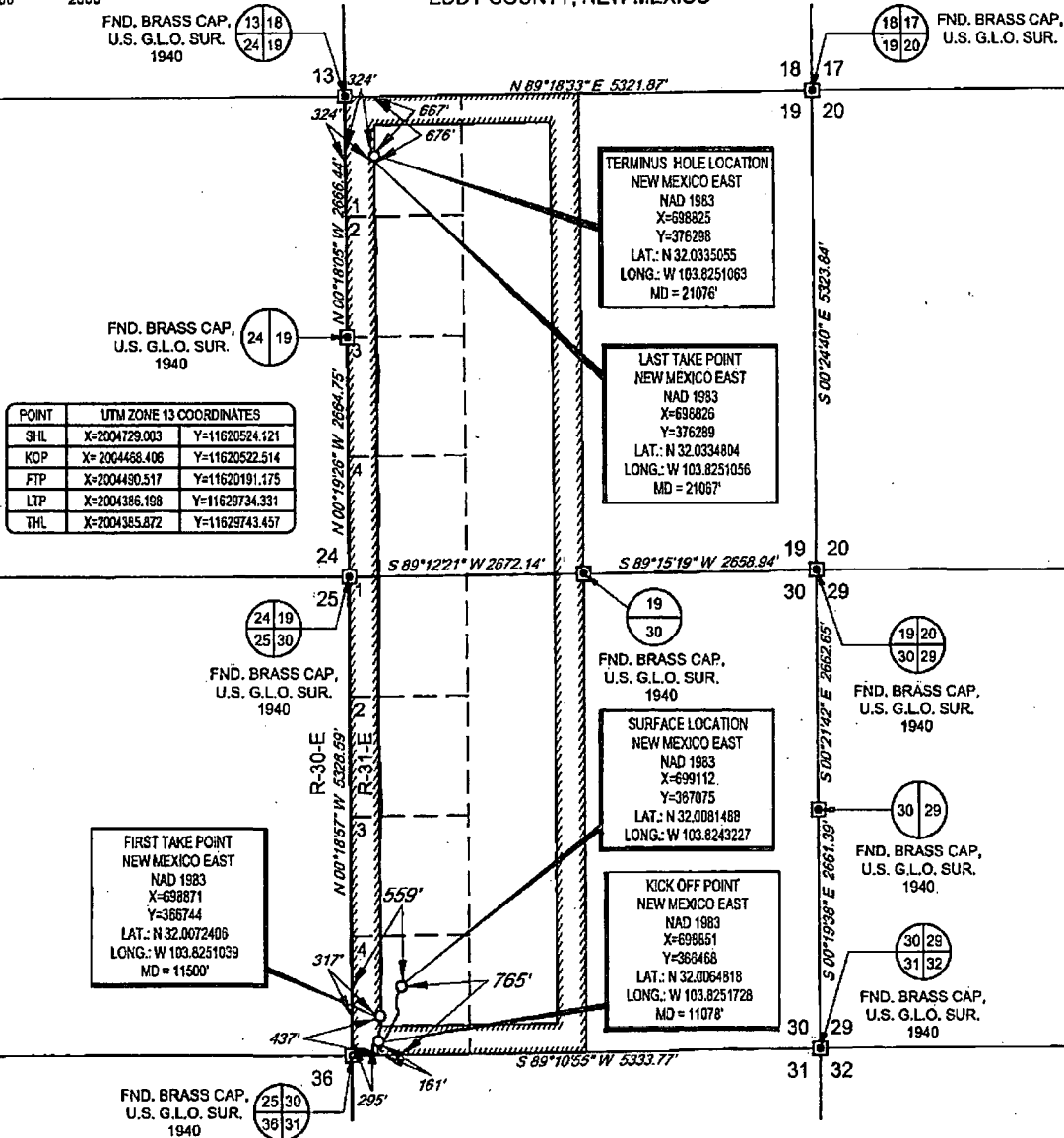
**\*\* REVISED \*\* REVISED \*\* REVISED \*\* REVISED \*\* REVISED \*\* REVISED \*\* REVISED \*\* REVISED \*\***



SCALE: 1" = 2000'

0' 1000' 2000'

SECTION 30, TOWNSHIP 26-S, RANGE 31-E, N.M.P.M.  
EDDY COUNTY, NEW MEXICO

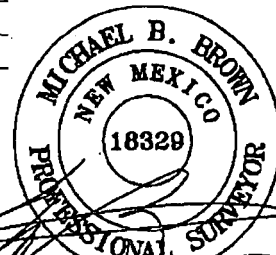


LEASE NAME & WELL NO.: STELLA BLUE 30 FED COM #701H  
SECTION 30 TWP 26-S RGE 31-E SURVEY N.M.P.M.  
COUNTY EDDY STATE NM ELEVATION 3069'  
DESCRIPTION 765' FSL & 559' FWL



**TOPOGRAPHIC**  
LOYALTY INNOVATION LEGACY

1400 EVERMAN PARKWAY, Ste. 146 • FT. WORTH, TEXAS 76140  
TELEPHONE: (817) 744-7512 • FAX (817) 744-7554  
2903 NORTH BIG SPRING • MIDLAND, TEXAS 79705  
TELEPHONE: (432) 682-1853 OR (800) 767-1853 • FAX (432) 682-1743  
WWW.TOPOGRAPHIC.COM



Michael Blake Brown, P.S. No. 18329  
MARCH 27, 2019

**Geog resources, Inc.**

STELLA BLUE 30 FED COM  
#701H  
AS-COMPLETED

REVISION:

DATE: 03/27/2019

FILE:AD\_STELLA\_BLUE\_30\_FED\_COM\_701H

DRAWN BY: JLS

SHEET: 1 OF 1

NOTES:

1. ORIGINAL DOCUMENT SIZE: 8.5" X 11"
2. ALL BEARINGS, DISTANCES, AND COORDINATE VALUES CONTAINED HEREIN ARE GRID BASED UPON THE NEW MEXICO COORDINATE SYSTEM OF 1983, EAST ZONE, U.S. SURVEY FEET.
3. THIS WELL LOCATION SHOWN HEREON HAS BEEN SURVEYED ON THE GROUND UNDER MY SUPERVISION AND PREPARED ACCORDING TO THE EVIDENCE FOUND AT THE TIME OF SURVEY, AND DATA PROVIDED BY EOG RESOURCES, INC. THIS CERTIFICATION IS MADE AND LIMITED TO THOSE PERSONS OR ENTITIES SHOWN ON THE FACE OF THIS PLAT AND IS NON-TRANSFERABLE. THIS SURVEY IS CERTIFIED FOR THIS TRANSACTION ONLY.