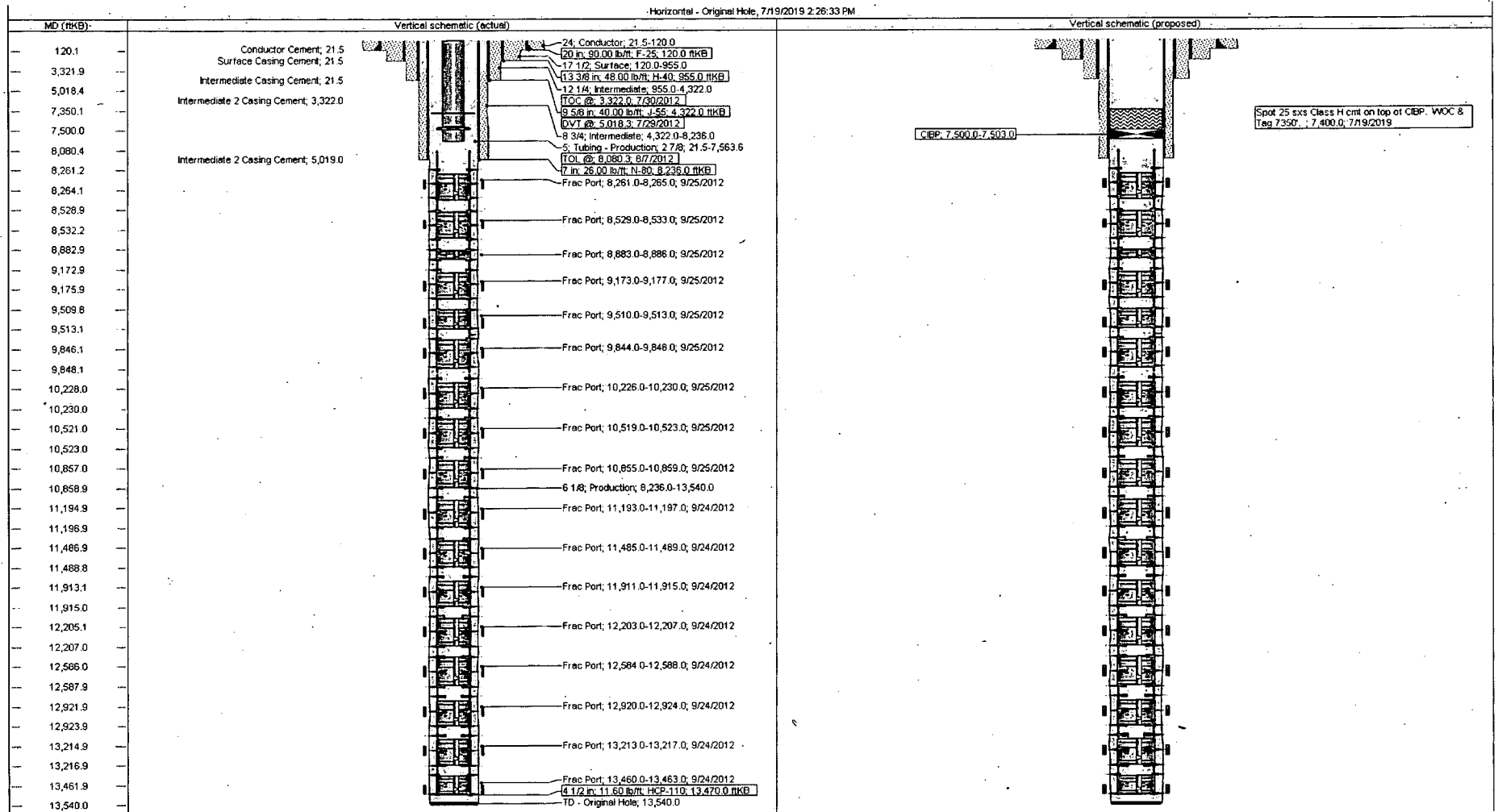


XTO Permian Operating, LLC  
Poker Lake Unit 356H  
30-015-39675  
Temporarily Abandon

Before

After



## **BUREAU OF LAND MANAGEMENT**

Carlsbad Field Office  
620 East Greene Street  
Carlsbad, New Mexico 88220  
575-234-5972

### **Conditions of Approval for Temporary Abandonment of Wells**

**Definition:** A temporarily abandoned well is a completion that is not capable of production in paying quantities but which may have future value. Pursuant to 43 CFR 3162.3-4 (c), no well may be temporarily abandoned for more than 30 days without the prior approval of the authorized officer.

**Note:** TA status "will be effective for a period up to 1 year from the date of NOI approval and can be renewed annually thereafter" per IM NM-2016-017.

1. A bridge plug (CIBP) must be installed 50 to 100 feet above any open perforations or open hole. The CIBP must be capped with either a minimum of 25 sacks of cement if placed with tubing or 35 feet of cement if placed with a bailer. The top of the cement must be verified by tagging.
2. The wellbore must be filled with corrosion inhibited fluid and pressure tested to 500 psi. The casing shall be capable of holding this pressure for at least 30 minutes. If the well does not pass the casing integrity test, then the operator shall, within 30 days, submit a procedure to either repair the casing or to plug and abandon the well.
3. Contact the appropriate BLM office at least 24 hours prior to the scheduled Casing Integrity Test. For wells in Eddy County, 575-361-2822; Lea County 575-393-3612.
4. All downhole production/injection equipment (tubing, rods, etc.) shall be removed from the casing if it is not isolated by a packer.
5. A bradenhead test must be conducted. If the test indicates a problem, a remedial plan and time frame for remediation shall be submitted within ninety (90) days of the test.
6. Submit a subsequent Sundry Notice (Form 3160-5) with the following information:
  - a. A well bore diagram with all perforations, CIBP's, and tops of cement on CIBP's.
  - b. A description of the temporary abandonment procedure.
  - c. A clear copy or the original of the pressure test chart.