

NM OIL CONSERVATION
ARTESIA DISTRICT

AUG 26 2019

Form C-102

State of New Mexico
Energy, Minerals & Natural Resources Department
OIL CONSERVATION DIVISION
1220 South St. Francis Dr.
Santa Fe, NM 87505

Revised August 1, 2011
Submit one copy to appropriate
District Office

RECEIVED

☒ AMENDED REPORT
AS-DRILLED

District I
1625 N. French Dr., Hobbs, NM 88240
Phone: (575) 393-6161 Fax: (575) 393-0720
District II
811 S. First St., Artesia, NM 88210
Phone: (575) 748-1283 Fax: (575) 748-9720
District III
1000 Rio Brazos Road, Aztec, NM 87410
Phone: (505) 334-6178 Fax: (505) 334-6170
District IV
1220 S. St. Francis Dr., Santa Fe, NM 87505
Phone: (505) 476-3460 Fax: (505) 476-3462

WELL LOCATION AND ACREAGE DEDICATION PLAT

API Number 30-015-44267	Pool Code 60660	Pool Name TURKEY TRACK; BONE SPRING
Property Code 317700	Property Name TURKEY TRACK "8_7" STATE	Well Number 32H
OGRID No. 192463	Operator Name OXY USA WTP LP	Elevation 3396.3'

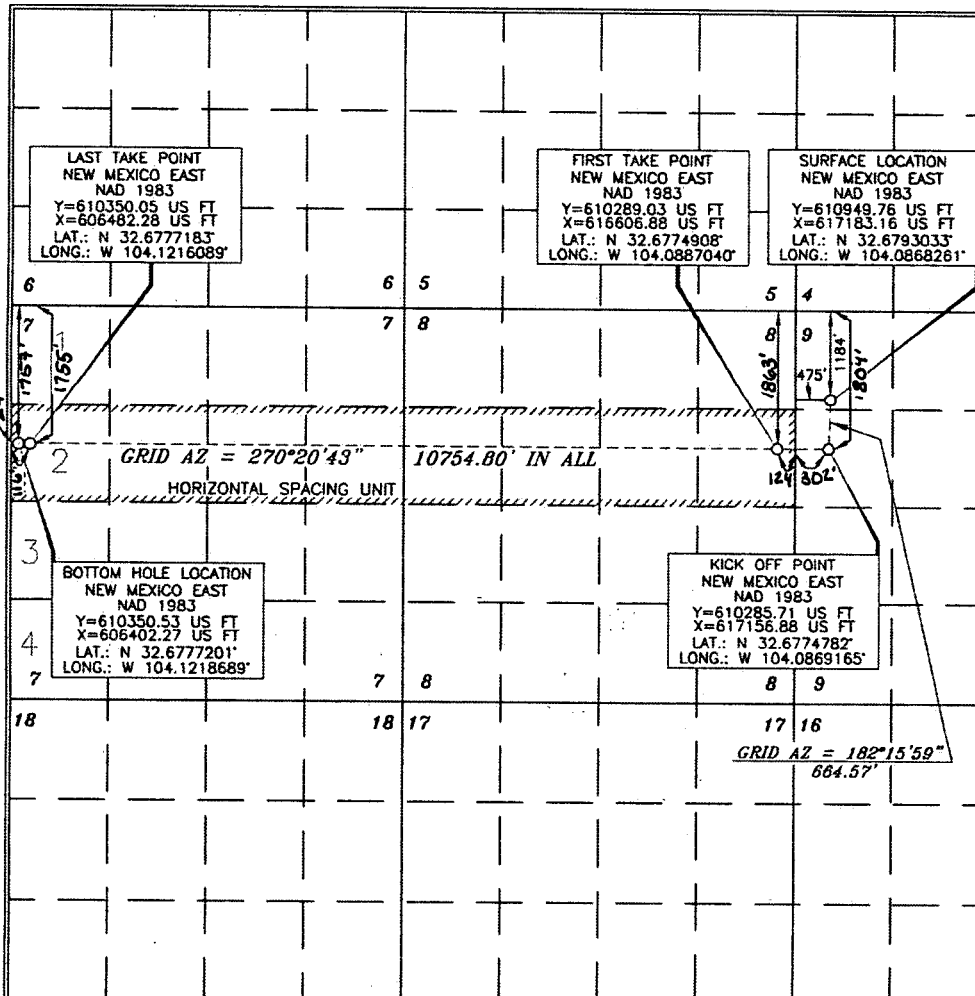
Surface Location

UL or lot no.	Section	Township	Range	Lot Idn	Feet from the	North/South line	Feet from the	East/West line	County
D	9	19 SOUTH	29 EAST, N.M.P.M.		1184'	NORTH	475'	WEST	EDDY

Bottom Hole Location If Different From Surface

UL or lot no.	Section	Township	Range	Lot Idn	Feet from the	North/South line	Feet from the	East/West line	County
2	7	19 SOUTH	29 EAST, N.M.P.M.		1757'	NORTH	24'	WEST	EDDY
Dedicated Acres 312.82	Joint or Infill YES	Consolidation Code	Order No.	FTP: 1863' FNL 124' FEL LTP: 1755' FNL 116' FWL					

No allowable will be assigned to this completion until all interests have been consolidated or a non-standard unit has been approved by the division.



OPERATOR CERTIFICATION

I hereby certify that the information contained herein is true and complete to the best of my knowledge and belief, and that this organization either owns a working interest or unleased mineral interest in the land including the proposed bottom hole location or has a right to drill this well at this location pursuant to a contract with an owner of such a mineral or working interest, or to a voluntary pooling agreement or a compulsory pooling order heretofore entered by the division.

Signature: *Leslie Reeves* Date: 08/21/19
Printed Name: LESLIE REEVES
Email Address: LESLIE_REEVES@OXY.COM

SURVEYOR CERTIFICATION

I hereby certify that the well location shown on this plat was plotted from field notes of actual surveys made by me or under my supervision, and that the same is true and correct to the best of my belief.

Signature: *Terry J. Paul* Date of Survey: NOVEMBER 27, 2018
Professional Surveyor: 15079

Certificate Number: 15079