

District I
1625 N. French Dr., Hobbs, NM 88240
Phone: (575) 393-6161 Fax: (575) 393-0720
District II
811 S. First St., Artesia, NM 88210
Phone: (575) 748-1283 Fax: (575) 748-9720
District III
1000 Rio Brazos Road, Aztec, NM 87410
Phone: (505) 334-6178 Fax: (505) 334-6170
District IV
1220 S. St. Francis Dr., Santa Fe, NM 87505
Phone: (505) 476-3460 Fax: (505) 476-3462

State of New Mexico
Energy, Minerals & Natural Resources Department
OIL CONSERVATION DIVISION
1220 South St. Francis Dr.
Santa Fe, NM 87505

Form C-102
Revised August 1, 2011
Submit one copy to appropriate
District Office

☐ AMENDED REPORT

WELL LOCATION AND ACREAGE DEDICATION PLAT

| | | |
|--|--|--|
| ¹ API Number 30-015 46.302 | ² Pool Code 98220 | ³ Pool Name Purple Sage Wolfcamp (gas) |
| ⁴ Property Code 317791 | ⁵ Property Name DAVINCI 7-18 FEDERAL COM | ⁶ Well Number 34H |
| ⁷ OGRID No. 215099 | ⁸ Operator Name CIMAREX ENERGY CO. | ⁹ Elevation 3306.7' |

¹⁰ Surface Location

| UL or lot no. | Section | Township | Range | Lot Idn | Feet from the | North/South line | Feet from the | East/West line | County |
|---------------|---------|----------|-------|---------|---------------|------------------|---------------|----------------|--------|
| B | 7 | 25S | 27E | | 330 | NORTH | 1531 | EAST | EDDY |

¹¹ Bottom Hole Location If Different From Surface

| UL or lot no. | Section | Township | Range | Lot Idn | Feet from the | North/South line | Feet from the | East/West line | County |
|--------------------------------------|-------------------------------|----------------------------------|-------------------------|---------|---------------|------------------|---------------|----------------|--------|
| O | 18 | 25S | 27E | | 330 | SOUTH | 2158 | EAST | EDDY |
| ¹² Dedicated Acres 640 | ¹³ Joint or Infill | ¹⁴ Consolidation Code | ¹⁵ Order No. | | | | | | |

No allowable will be assigned to this completion until all interests have been consolidated or a non-standard unit has been approved by the division.

¹⁶ NOTE:

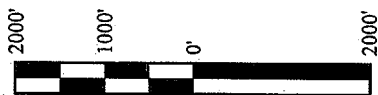
- Distances referenced on plat to section lines are perpendicular.
- Basis of Bearing is a Transverse Mercator Projection with a Central Meridian of W103°53'00"

| |
|--|
| NAD 83 (SURFACE HOLE LOCATION) |
| LATITUDE = 32°09'03.39" (32.150942) |
| LONGITUDE = 104°13'33.24" (104.225900) |
| NAD 27 (SURFACE HOLE LOCATION) |
| LATITUDE = 32°09'02.95" (32.150819) |
| LONGITUDE = 104°13'31.45" (104.225403) |
| STATE PLANE NAD 83 (N.M. EAST) |
| N: 418664.29 E: 574585.68 |
| STATE PLANE NAD 27 (N.M. EAST) |
| N: 418606.77 E: 533402.70 |

| |
|--|
| NAD 83 (BOTTOM HOLE LOCATION) |
| LATITUDE = 32°07'24.96" (32.123600) |
| LONGITUDE = 104°13'40.35" (104.227875) |
| NAD 27 (BOTTOM HOLE LOCATION) |
| LATITUDE = 32°07'24.53" (32.123481) |
| LONGITUDE = 104°13'38.56" (104.227378) |
| STATE PLANE NAD 83 (N.M. EAST) |
| N: 408717.61 E: 573984.53 |
| STATE PLANE NAD 27 (N.M. EAST) |
| N: 408660.28 E: 532801.40 |

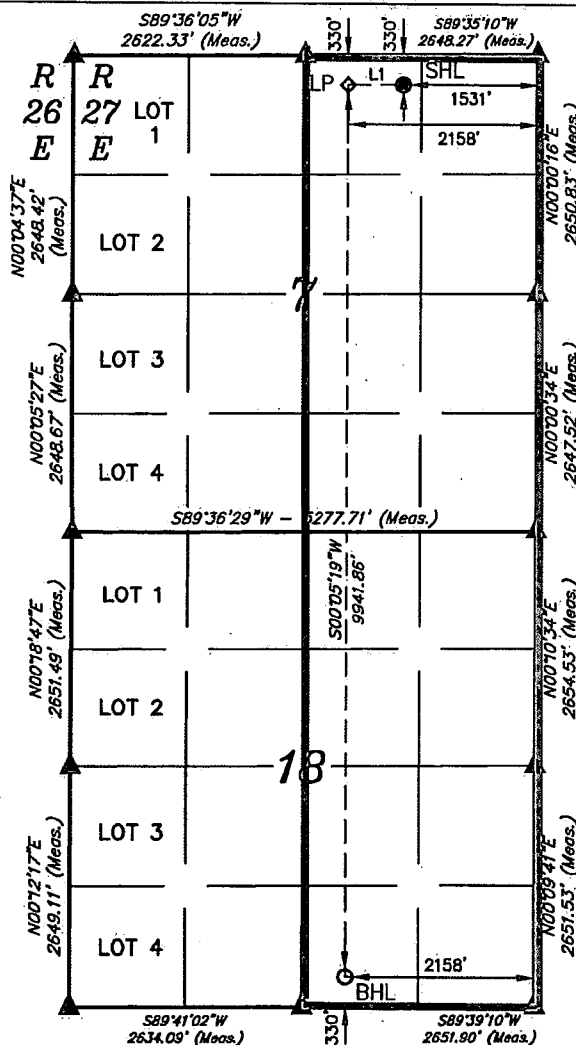
LINE TABLE

| LINE | DIRECTION | LENGTH |
|------|-------------|---------|
| L1 | S89°35'00"W | 627.51' |



SCALE
DRAWN BY: S.F. 05-29-17

- = SURFACE HOLE LOCATION
- = BOTTOM HOLE LOCATION
- ▲ = SECTION CORNER LOCATED
- ◇ = LANDING POINT



¹⁷ OPERATOR CERTIFICATION

I hereby certify that the information contained herein is true and complete to the best of my knowledge and belief, and that this organization either owns a working interest or unleased mineral interest in the land including the proposed bottom hole location or has a right to drill this well at this location pursuant to a contract with an owner of such a mineral or working interest, or to a voluntary pooling agreement or a compulsory pooling order approved by the division.

Aricka Easterling 3/16/18
Signature Date

Aricka Easterling

Printed Name

aeasterling@cimarex.com

E-mail Address

¹⁸ SURVEYOR CERTIFICATION

I hereby certify that the well location shown on this plat was plotted from field notes of actual surveys made by me or under my supervision, and that the same is true and correct to the best of my belief.

May 11, 2017

Date of Survey

Signature and Seal of Professional Surveyor:



Certificate Number:

RWP 9-30-19