

Intent ☒ As Drilled ☐

OCT 02 2019

API #

Operator Name:	Property Name:	Well Number
DEVON ENERGY PRODUCTION CO., L.P.	LUSITANO 34-15 FED COM	523H

Kick Off Point (KOP)

UL C	Section 34	Township 25S	Range 31E	Lot	Feet 1170	From N/S FNL	Feet 2310	From E/W FWL	County EDDY
Latitude 32.090775					Longitude 103.7671442			NAD 83	

First Take Point (FTP)

UL C	Section 34	Township 25S	Range 31E	Lot	Feet 1224	From N/S NORTH	Feet 2310	From E/W WEST	County EDDY
Latitude 32.0906377					Longitude 103.7671442			NAD 83	

Last Take Point (LTP)

UL C	Section 15	Township 25S	Range 31E	Lot	Feet 100	From N/S NORTH	Feet 2310	From E/W WEST	County EDDY
Latitude 32.1374092					Longitude 103.7669162			NAD 83	

Is this well the defining well for the Horizontal Spacing Unit? ☐ NO

Is this well an infill well? ☐ YES

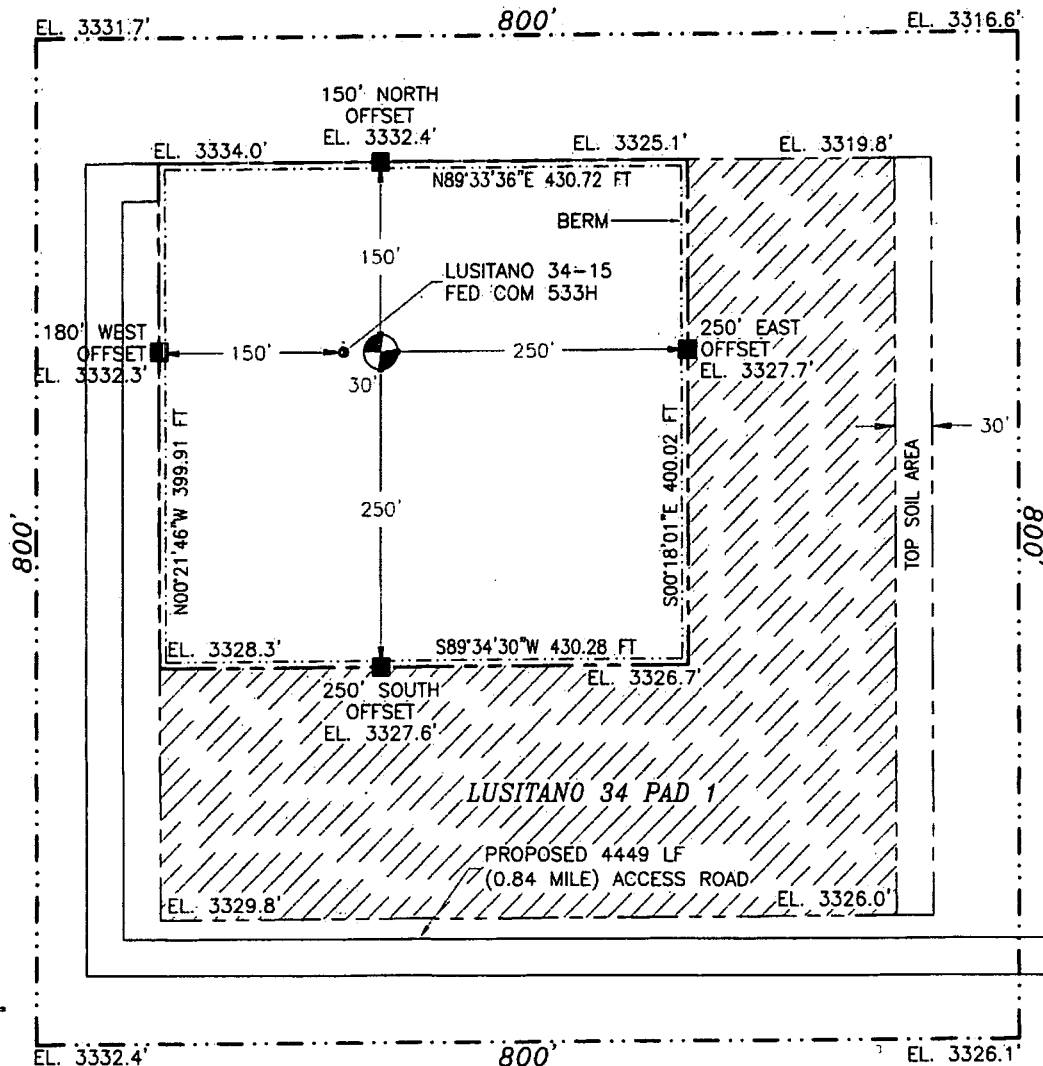
If infill is yes please provide API if available, Operator Name and well number for Defining well for Horizontal Spacing Unit.

API #

Operator Name:	Property Name:	Well Number

SECTION 34, TOWNSHIP 25 SOUTH, RANGE 31 EAST, N.M.P.M.
EDDY COUNTY, STATE OF NEW MEXICO
SITE MAP

NOTE: LATITUDE AND LONGITUDE COORDINATES ARE SHOWN USING THE NORTH AMERICAN DATUM OF 1983 (NAD83) LISTED NEW MEXICO STATE PLANE EAST COORDINATES ARE GRID (NAD83). BASIS OF BEARING AND DISTANCES USED ARE NEW MEXICO STATE PLANE EAST COORDINATES MODIFIED TO THE SURFACE. VERTICAL DATUM NAVD88.



LUSITANO 34-15 FED COM 523H

ELEV. = 3332.7'

3.953± ACRES

LAT. = 32.0923222°N (NAD83)

LONG. = 103.7689512°W

NMSP EAST (FT)

N = 397780.99

E = 716114.94

015 75 150 300

SCALE 1" = 150'

DIRECTIONS TO LOCATION

FROM STATE HIGHWAY 128 AND CR 1 (ORLA HIGHWAY) GO SOUTH ON CR 1 6.5 MILES TO MONSANTO ROAD, TURN RIGHT GO WEST 2.1 MILES, TURN RIGHT GO NORTH 0.8 OF A MILE, TURN LEFT GO WEST 2.1 MILES, BEND LEFT GO SOUTHWEST 1.3 MILES, TURN LEFT GO SOUTH 1.0 MILE, CONTINUE SOUTH ON 25' CALICHE LEASE ROAD FOR APPROX. 1.2 MILE TO BEGIN ROAD SURVEY, FOLLOW ROAD SURVEY WEST 3789', TURN RIGHT GO NORTH 660' (TOTAL OF 4449') TO THE NORTHWEST PAD CORNER FOR THIS LOCATION.

DEVON ENERGY PRODUCTION COMPANY, L.P.
LUSITANO 34-15 FED COM 523H
LOCATED 610 FT. FROM THE NORTH LINE
AND 1750 FT. FROM THE WEST LINE OF
SECTION 34, TOWNSHIP 25 SOUTH,
RANGE 31 EAST, N.M.P.M.
EDDY COUNTY, STATE OF NEW MEXICO
LAND STATUS: BLM

JUNE 10, 2019

SURVEY NO. 7299A

MADRON SURVEYING, INC. 301 SOUTH CANAL (575) 234-3341 CARLSBAD, NEW MEXICO