

NM OIL CONSERVATION

ARTESIA DISTRICT

OCT 15 2019

Intent ☒ As Drilled ☐

API #

RECEIVED

Operator Name: DEVON ENERGY PRODUCTION COMPANY, L.P.	Property Name: BELLOQ 11-2 FED STATE COM	Well Number 525H
--	---	---------------------

Kick Off Point (KOP)

UL N	Section 11	Township 23S	Range 31E	Lot	Feet 200	From N/S FSL	Feet 2240	From E/W FWL	County EDDY
Latitude 32.312268					Longitude -103.749876				NAD 83

First Take Point (FTP)

UL N	Section 11	Township 23S	Range 31E	Lot	Feet 100	From N/S SOUTH	Feet 2240	From E/W WEST	County EDDY
Latitude 32.3120033					Longitude 103.7498748				NAD 83

Last Take Point (LTP)

UL C	Section 2	Township 23S	Range 31E	Lot 3	Feet 100	From N/S NORTH	Feet 2240	From E/W WEST	County EDDY
Latitude 32.3404563					Longitude 103.7499085				NAD 83

Is this well the defining well for the Horizontal Spacing Unit?

☐ NO

Is this well an infill well?

☒ YES

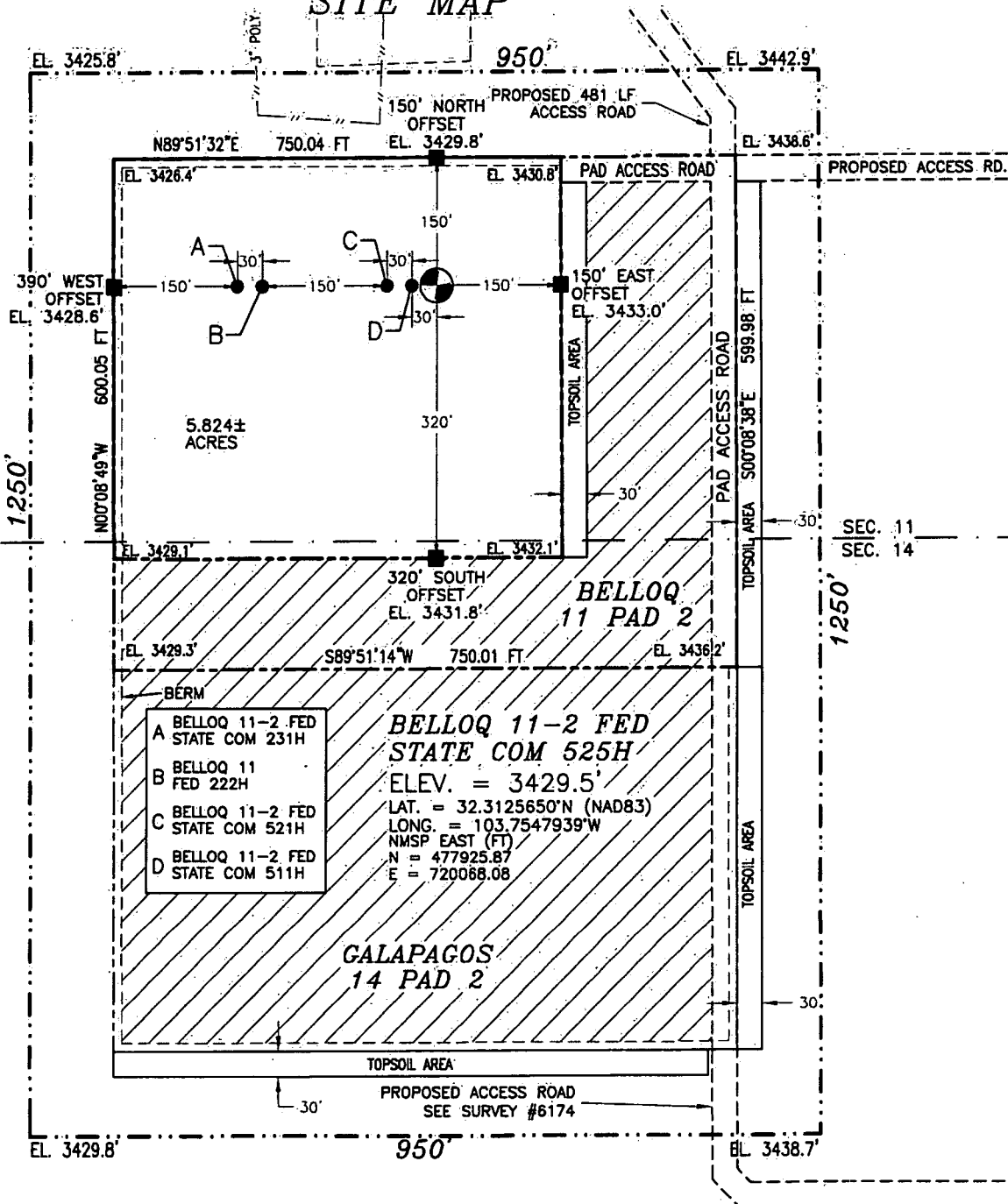
If infill is yes please provide API if available, Operator Name and well number for Defining well for Horizontal Spacing Unit.

API #	Operator Name:	Property Name:	Well Number

KZ 06/29/2018

SECTION 11, TOWNSHIP 23 SOUTH, RANGE 31 EAST, N.M.P.M.
EDDY COUNTY, STATE OF NEW MEXICO

SITE MAP



020 100 200 400

SCALE 1" = 200'

DIRECTIONS TO LOCATION

FROM STATE HIGHWAY 128 AND CR 798 (RED ROAD) GO NORTH ON CR 798 4.7 MILES, TURN LEFT ON CALICHE ROAD AND GO WEST 0.15 OF A MILE, BEND RIGHT AND GO NORTHWEST 0.2 OF A MILE, TURN LEFT AND GO SOUTHWEST 0.6 OF A MILE, TURN LEFT AND GO SOUTH 660' TO PROPOSED ROAD SURVEY AND FOLLOW FLAGS SOUTHEAST 431', THEN SOUTH 50' TO THE NORTHEAST PAD CORNER.

DEVON ENERGY PRODUCTION COMPANY, L.P.
BELLOQ 11-2 FED STATE COM 525H
LOCATED 300 FT. FROM THE SOUTH LINE
AND 720 FT. FROM THE WEST LINE OF
SECTION 11, TOWNSHIP 23 SOUTH,
RANGE 31 EAST, N.M.P.M.
EDDY COUNTY, STATE OF NEW MEXICO

FEBRUARY 25, 2019

SURVEY NO. 6181B

MADRON SURVEYING, INC.

301 SOUTH CANAL
(575) 234-3341

CARLSBAD, NEW MEXICO