

District I
1625 N. French Dr., Hobbs, NM 88240
Phone: (575) 393-6161 Fax: (575) 393-0720
District II
811 S. First St., Artesia, NM 88210
Phone: (575) 748-1283 Fax: (575) 748-9720
District III
1000 Rio Brazos Road, Aztec, NM 87410
Phone: (505) 334-6178 Fax: (505) 334-6170
District IV
1220 S. St. Francis Dr., Sante Fe, NM 87505
Phone: (505) 476-3460 Fax: (505) 476-3462

State of New Mexico
Energy, Minerals & Natural Resources
Department
OIL CONSERVATION DIVISION
1220 South St. Francis Dr.
Santa Fe, NM 87505

NM OIL CONSERVATION
ARTESIA DISTRICT

FORM C-102
Revised August 1, 2011
Submit one copy to appropriate
District Office

SEP 27 2019

RECEIVED

AMENDED REPORT

WELL LOCATION AND ACREAGE DEDICATION PLAT

¹ API Number 30-015-44986		² Pool Code 98220		³ Pool Name PURPLE SAGE;WOLFCAMP(GAS)	
⁴ Property Code 321453		⁵ Property Name GENERAL KEHOE 02-24S-28E RB			⁶ Well Number #228H
⁷ OGRID No. 228937		⁸ Operator Name MATADOR PRODUCTION COMPANY			⁹ Elevation 2981'

¹⁰Surface Location

UL or lot no.	Section	Township	Range	Lot Idn	Feet from the	North/South line	Feet from the	East/West line	County
1	2	24-S	28-E	-	217'	NORTH	368'	EAST	EDDY

UL or lot no.	Section	Township	Range	Lot Idn	Feet from the	North/South line	Feet from the	East/West line	County
P	2	24-S	28-E	-	235'	SOUTH	383'	EAST	EDDY

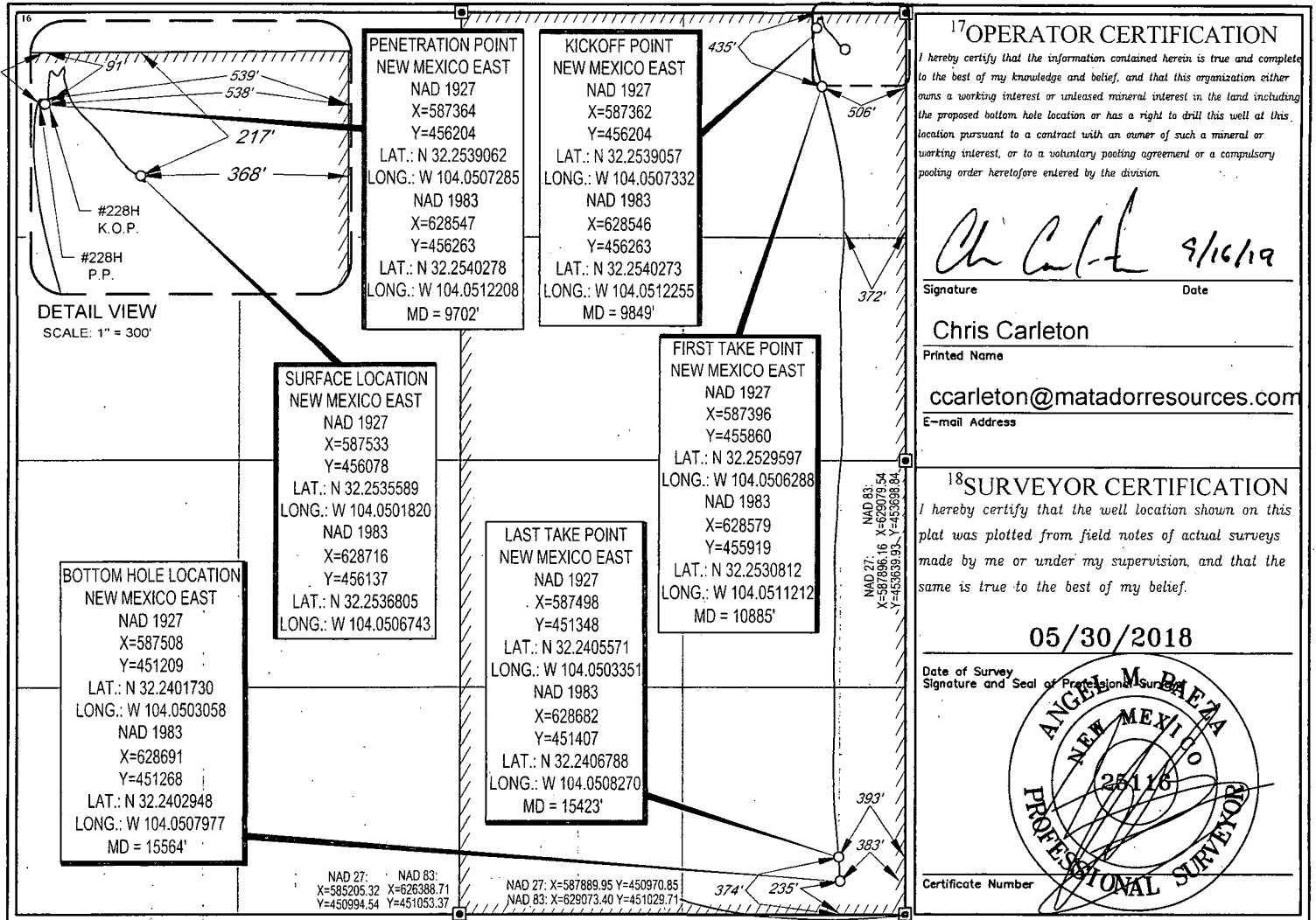
¹² Dedicated Acres 319.64	¹³ Joint or Infill	¹⁴ Consolidation Code	¹⁵ Order No.
---	-------------------------------	----------------------------------	-------------------------

No allowable will be assigned to this completion until all interests have been consolidated or a non-standard unit has been approved by the division.

NAD 27: X=585253.22 Y=456284.90
NAD 83: X=626436.49 Y=456343.84

SEE
DETAIL

NAD 27: X=587902.14 Y=456297.46
NAD 83: X=629085.45 Y=456356.44



¹⁷OPERATOR CERTIFICATION
I hereby certify that the information contained herein is true and complete to the best of my knowledge and belief, and that this organization either owns a working interest or unleased mineral interest in the land including the proposed bottom hole location or has a right to drill this well at this location pursuant to a contract with an owner of such a mineral or working interest, or to a voluntary pooling agreement or a compulsory pooling order heretofore entered by the division.

Chris Carleton 9/16/19
Signature Date

Chris Carleton
Printed Name
ccarleton@matadorresources.com
E-mail Address

¹⁸SURVEYOR CERTIFICATION
I hereby certify that the well location shown on this plat was plotted from field notes of actual surveys made by me or under my supervision, and that the same is true to the best of my belief.

05/30/2018
Date of Survey
Signature and Seal of Professional Surveyor
ANGEL M. DIAZ
NEW MEXICO
25116
PROFESSIONAL SURVEYOR
Certificate Number

NAD 27: X=585205.32 Y=456388.71
NAD 83: X=626388.71 Y=456388.71
NAD 27: X=587889.95 Y=450970.85
NAD 83: X=628073.40 Y=451028.71

RW 10-21-19

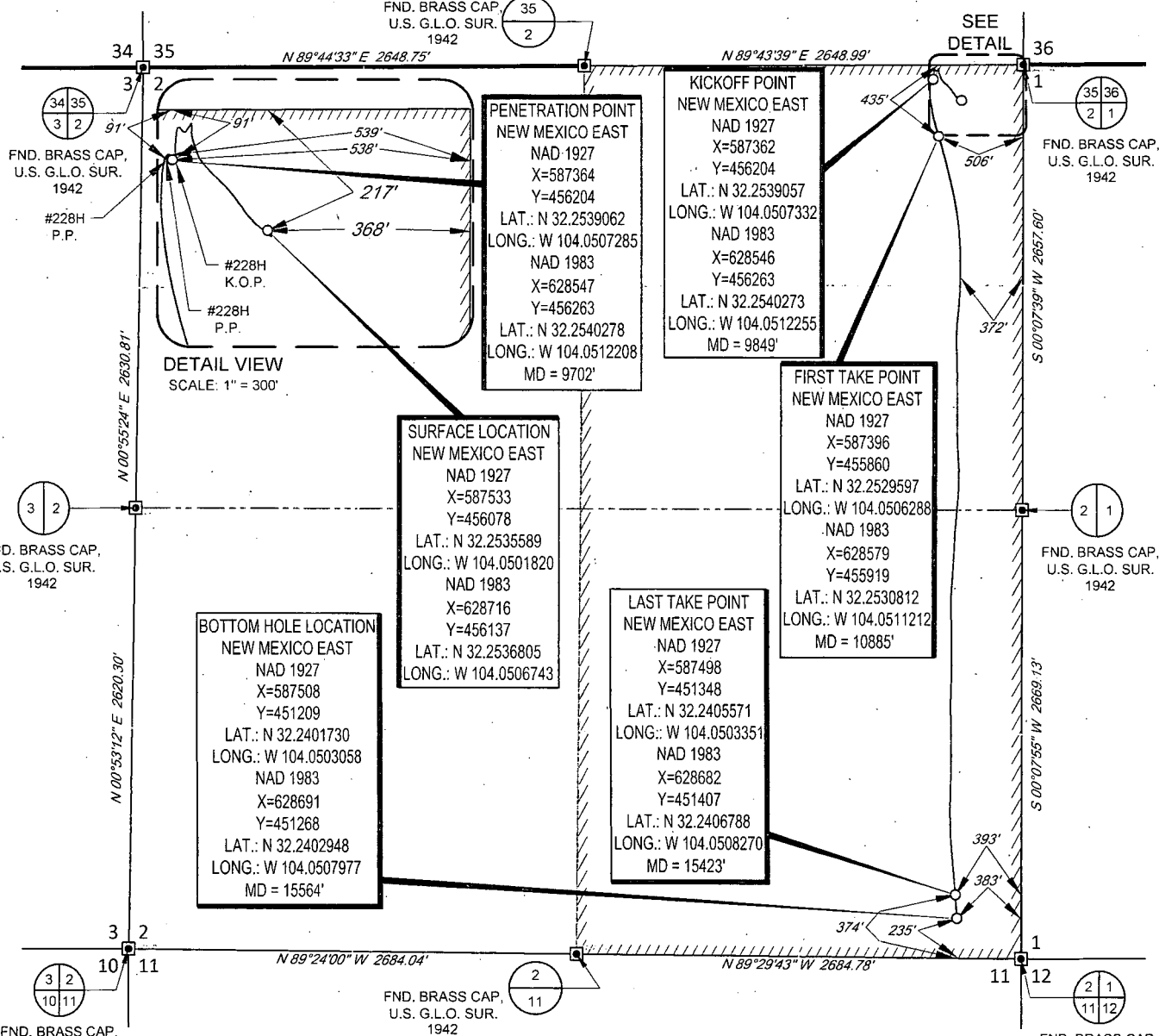
SCALE: 1" = 1000'

0' 500' 1000'

SECTION 2, TOWNSHIP 24-S, RANGE 28-E, N.M.P.M.
EDDY COUNTY, NEW MEXICO

FND. BRASS CAP.
U.S. G.L.O. SUR.
1942

SEE
DETAIL



LEASE NAME & WELL NO.: GENERAL KEHOE 02-24S-28E RB #228H
 SECTION 2 TWP. 24-S RGE 28-E SURVEY N.M.P.M.
 COUNTY EDDY STATE NM ELEVATION 2981'
 DESCRIPTION 217' FNL & 368' FEL



TOPOGRAPHIC
LOYALTY INNOVATION LEGACY
1400 EVERMAN PARKWAY, Ste. 146 • FT. WORTH, TEXAS 76140
TELEPHONE: (817) 744-7512 • FAX (817) 744-7554
2903 NORTH BIG SPRING • MIDLAND, TEXAS 79705
TELEPHONE: (432) 682-1653 OR (800) 767-1653 • FAX (432) 682-1743
WWW.TOPOGRAPHIC.COM



Angel M. Baeza, P.S. No. 25116
SEPTEMBER 12, 2019

GENERAL KEHOE 02-24S-28E RB #228H AS-COMPLETED	REVISION:	
	INT	DATE
DATE: 09/12/2019		
FILE: AD_GENERAL_KEHOE_02-24S-28E_RB_228H		
DRAWN BY: AMD		
SHEET: 1 OF 1		

NOTES:
 1. ORIGINAL DOCUMENT SIZE: 8.5" X 11"
 2. ALL BEARINGS, DISTANCES, AND COORDINATE VALUES CONTAINED HEREIN ARE GRID BASED UPON THE NEW MEXICO COORDINATE SYSTEM OF 1983, EAST ZONE, U.S. SURVEY FEET.
 3. THIS WELL LOCATION SHOWN HEREON HAS BEEN SURVEYED ON THE GROUND UNDER MY SUPERVISION AND PREPARED ACCORDING TO THE EVIDENCE FOUND AT THE TIME OF SURVEY, AND DATA PROVIDED BY MATADOR PRODUCTION COMPANY. THIS CERTIFICATION IS MADE AND LIMITED TO THOSE PERSONS OR ENTITIES SHOWN ON THE FACE OF THIS PLAT AND IS NON-TRANSFERABLE. THIS SURVEY IS CERTIFIED FOR THIS TRANSACTION ONLY.

Submit To Appropriate District Office
Two Copies:
District I
1625 N. French Dr., Hobbs, NM 88240
District II
811 S. First St., Artesia, NM 88210
District III
1000 Rio Brazos Rd., Aztec, NM 87410
District IV
1220 S. St. Francis Dr., Santa Fe, NM 87505

NM OIL CONSERVATION
ARTESIA DISTRICT
SEP 27 2019
RECEIVED

State of New Mexico
Energy, Minerals and Natural Resources
Oil Conservation Division
1220 South St. Francis Dr.
Santa Fe, NM 87505

Form C-105
Revised April 3, 2017

1. WELL API NO.
30-015-44986
2. Type of Lease
 STATE FEE FED/INDIAN
3. State Oil & Gas Lease No.

WELL COMPLETION OR RECOMPLETION REPORT AND LOG

4. Reason for filing:
 COMPLETION REPORT (Fill in boxes #1 through #31 for State and Fee wells only)
 C-144 CLOSURE ATTACHMENT (Fill in boxes #1 through #9, #15 Date Rig Released and #32 and/or #33; attach this and the plat to the C-144 closure report in accordance with 19.15.17.13 K NMAC)

5. Lease Name or Unit Agreement Name
GENERAL KEHÖE 02 24S 28E RB
6. Well Number:
228H

7. Type of Completion:
 NEW WELL WORKOVER DEEPENING PLUGBACK DIFFERENT RESERVOIR OTHER

8. Name of Operator
MATADOR PRODUCTION COMPANY

9. OGRID
228937

10. Address of Operator
5400 LBJ Freeway, Ste. 1500, Dallas, TX 75240

11. Pool name or Wildcat
PURPLE SAGE;WOLFCAMP(GAS)

12. Location	Unit Ltr	Section	Township	Range	Lot	Feet from the	N/S Line	Feet from the	E/W Line	County
Surface:	A	2	24S	28E	1	217	N	368	E	EDDY
BH:	P	2	24S	28E	16	235	S	383	E	EDDY

13. Date Spudded 04/03/19 14. Date T.D. Reached 05/09/19 15. Date Rig Released 05/13/19 16. Date Completed (Ready to Produce) 08/20/19 17. Elevations (DF and RKB, RT, GR, etc.) 2981' GR

18. Total Measured Depth of Well 10769/15564' 19. Plug Back Measured Depth 15554' 20. Was Directional Survey Made? Y 21. Type Electric and Other Logs Run Gamma

22. Producing Interval(s), of this completion - Top, Bottom, Name
10885' - 15423'; Wolfcamp
Cement in hole 15564' - 15554'

CASING RECORD (Report all strings set in well)

CASING SIZE	WEIGHT LB./FT.	DEPTH SET	HOLE SIZE	CEMENTING RECORD	AMOUNT PULLED
13.375	54.5# J55	415	17.5	558 1.34 C	0
9.625	40.0# J55	2764	12.25	983 1.33 C	0
7.625	29.7# P110	10855	8.75	680 1.46 C	0
5.5	20.0# P110	15554	6.75	945 1.24 H	0

24. LINER RECORD				25. TUBING RECORD			
SIZE	TOP	BOTTOM	SACKS CEMENT	SCREEN	SIZE	DEPTH SET	PACKER SET

26. Perforation record (interval, size, and number)
10885' - 15423'; 293 clusters ttl, 35 holes per @ 0.38"

27. ACID, SHOT, FRACTURE, CEMENT, SQUEEZE, ETC.
DEPTH INTERVAL AMOUNT AND KIND MATERIAL USED
10885 - 15423' 11,950.930 lbs sand; fracture treat

PRODUCTION

Date First Production 08/20/19 Production Method (Flowing, gas lift, pumping - Size and type pump) Flowing Well Status (Prod. or Shut-in) Prod.

Date of Test 08/30/19 Hours Tested 24 Choke Size 34/64 Prod'n For Test Period Oil - Bbl 967 Gas - MCF 8866 Water - Bbl. 3135 Gas - Oil Ratio 9169

Flow Tubing Press. --- Casing Pressure 3200 Calculated 24-Hour Rate Oil - Bbl. 967 Gas - MCF 8866 Water - Bbl. 3135 Oil Gravity - API - (Corr.) 53.0

29. Disposition of Gas (Sold, used for fuel, vented, etc.) Sold 30. Test Witnessed By Jaime Flores

31. List Attachments DS, log, C-102

32. If a temporary pit was used at the well, attach a plat with the location of the temporary pit. 33. Rig Release Date:

34. If an on-site burial was used at the well, report the exact location of the on-site burial:

Latitude Longitude NAD83
I hereby certify that the information shown on both sides of this form is true and complete to the best of my knowledge and belief
Signature Ava Monroe Printed Name Title Sr. Regulatory Analyst Date 09/25/19
E-mail Address amonroe@matadorresources.com

AB

