

UNITED STATES
DEPARTMENT OF THE INTERIOR
BUREAU OF LAND MANAGEMENTNM OIL CONSERVATION
ARTESIA DISTRICT
OCD Artesia
OCT 17 2019FORM APPROVED
OMB No. 1004-0137
Expires: July 31, 2010

WELL COMPLETION OR RECOMPLETION REPORT AND LOG

5. Lease Serial No.
NMNM593861a. Type of Well ☒ Oil Well ☐ Gas Well ☐ Dry ☐ Other
b. Type of Completion ☒ New Well ☐ Work Over ☐ Deepen ☐ Plug Back ☐ Diff. Resvr.
Other _____

6. If Indian, Allottee or Tribe Name

7. Unit or CA Agreement Name and No.

2. Name of Operator
OXY USA INCORPORATED
Contact: JANA MENDIOLA
E-Mail: janalyn_mendiola@oxy.com8. Lease Name and Well No.
CORRAL CANYON 36-25 FED COM 31H3. Address 5 GREENWAY PLAZA SUITE 110
HOUSTON, TX 77046-05213a. Phone No. (include area code)
Ph: 432-685-59369. API Well No.
30-015-44640-00-S1

4. Location of Well (Report location clearly and in accordance with Federal requirements)*

Sec 1 T25S R29E Mer NMP

At surface Lot 3 561FNL 1493FWL 32.165005 N Lat, 103.941775 W Lon

Sec 36 T24S R29E Mer NMP

At top prod interval reported below SWSW 352FSL 480FWL 32.167530 N Lat, 103.945040 W Lon

Sec 25 T24S R29E Mer NMP

At total depth NWNW 196FNL 480FWL 32.195120 N Lat, 103.944920 W Lon

10. Field and Pool, or Exploratory
PURPLE SAGE-WOLFCAMP (GAS)11. Sec., T., R., M., or Block and Survey
or Area Sec 1 T25S R29E Mer NMP12. County or Parish
EDDY13. State
NM14. Date Spudded
06/29/201815. Date T.D. Reached
01/10/201916. Date Completed
☐ D & A ☒ Ready to Prod.
02/27/201917. Elevations (DF, KB, RT, GL)*
3112 GL18. Total Depth: MD 20630
TVD 1044419. Plug Back T.D.: MD 20568
TVD 1044320. Depth Bridge Plug Set: MD
TVD21. Type Electric & Other Mechanical Logs Run (Submit copy of each)
CBL GAMMARAY22. Was well cored? ☒ No ☐ Yes (Submit analysis)
Was DST run? ☒ No ☐ Yes (Submit analysis)
Directional Survey? ☐ No ☒ Yes (Submit analysis)

23. Casing and Liner Record (Report all strings set in well)

Hole Size	Size/Grade	Wt. (#/ft.)	Top (MD)	Bottom (MD)	Stage Cementer Depth	No. of Sk. & Type of Cement	Slurry Vol. (BBL)	Cement Top*	Amount Pulled
8 1/2	14.750	10.750 J55	45.5	0	558	579	140	0	
6 3/4	6.125	5.500 P110	20.0	0	9698	934	240	5480	
5 1/2	9.875	7.625 L80	26.4	0	9807	3352	590	0	
4 1/2	6.125	4.500 P110	13.5	9698	20616	934	240	5480	

24. Tubing Record

Size	Depth Set (MD)	Packer Depth (MD)	Size	Depth Set (MD)	Packer Depth (MD)	Size	Depth Set (MD)	Packer Depth (MD)

25. Producing Intervals

26. Perforation Record

Formation	Top	Bottom	Perforated Interval	Size	No. Holes	Perf. Status
A) WOLFCAMP	10556	20308	✓ 10556 TO 20308	0.370	1200	ACTIVE
B)						
C)						
D)						

27. Acid, Fracture, Treatment, Cement Squeeze, Etc.

Depth Interval	Amount and Type of Material
10556 TO 20308	12060720G SLICKWATER + 24024G 7.5% HCL ACID + 2358594G LINEAR GEL W/ 15004658# SAND

28. Production - Interval A

Date First Produced	Test Date	Hours Tested	Test Production	Oil BBL	Gas MCF	Water BBL	Oil Gravity Corr. API	Gas Gravity	Production Method
03/01/2019	03/09/2019	24	→	5278.0	11777.0	10059.0			FLows FROM WELL
Choke Size	Tbg. Press. Flwg.	Csg. Press.	24 Hr. Rate	Oil BBL	Gas MCF	Water BBL	Gas:Oil Ratio	Well Status	
84/128	SI	1790.0	→	5278	11777	10059	2231	POW	

28a. Production - Interval B

Date First Produced	Test Date	Hours Tested	Test Production	Oil BBL	Gas MCF	Water BBL	Oil Gravity Corr. API	Gas Gravity	Production Method
			→						
Choke Size	Tbg. Press. Flwg.	Csg. Press.	24 Hr. Rate	Oil BBL	Gas MCF	Water BBL	Gas:Oil Ratio	Well Status	
	SI		→						

(See Instructions and spaces for additional data on reverse side)

ELECTRONIC SUBMISSION #465847 VERIFIED BY THE BLM WELL INFORMATION SYSTEM

** BLM REVISED ** BLM REVISED ** BLM REVISED ** BLM REVISED ** BLM REVISED **

Reclamation Due: 8/22/19

28b. Production - Interval C

Date First Produced	Test Date	Hours Tested	Test Production	Oil BBL	Gas MCF	Water BBL	Oil Gravity Corr. API	Gas Gravity	Production Method
			→						
Choke Size	Tbg. Press. Flwg. SI	Csg. Press.	24 Hr. Rate	Oil BBL	Gas MCF	Water BBL	Gas:Oil Ratio	Well Status	
			→						

28c. Production - Interval D

Date First Produced	Test Date	Hours Tested	Test Production	Oil BBL	Gas MCF	Water BBL	Oil Gravity Corr. API	Gas Gravity	Production Method
			→						
Choke Size	Tbg. Press. Flwg. SI	Csg. Press.	24 Hr. Rate	Oil BBL	Gas MCF	Water BBL	Gas:Oil Ratio	Well Status	
			→						

29. Disposition of Gas(Sold, used for fuel, vented, etc.)
SOLD

30. Summary of Porous Zones (Include Aquifers):

Show all important zones of porosity and contents thereof: Cored intervals and all drill-stem tests, including depth interval tested, cushion used, time tool open, flowing and shut-in pressures and recoveries.

31. Formation (Log) Markers

Formation	Top	Bottom	Descriptions, Contents, etc.	Name	Top Meas. Depth
BELL CANYON	3304	4225	OIL, GAS, WATER	RUSTLER	261
CHERRY CANYON	4226	5586	OIL, GAS, WATER	SALADO	608
BRUSHY CANYON	5587	7101	OIL, GAS, WATER	CASTILE	1816
BONE SPRING	7102	8055	OIL, GAS, WATER	DELAWARE	3279
BONE SPRING 1ST	8056	8664	OIL, GAS, WATER	BELL CANYON	3304
BONE SPRING 2ND	8665	9954	OIL, GAS, WATER	CHERRY CANYON	4226
BONE SPRING 3RD	9955	10537	OIL, GAS, WATER	BRUSHY CANYON	5587
WOLFCAMP	10538		OIL, GAS, WATER	BONE SPRING	7102

32. Additional remarks (include plugging procedure):

52. FORMATION (LOG) MARKERS CONTD.

1ST BONE SPRINGS 8056'M
2ND BONE SPRINGS 8665'M
3RD BONE SPRINGS 9955'M
WOLFCAMP 10538'M

33. Circle enclosed attachments:

- | | | | |
|---|--------------------|---------------|-----------------------|
| 1. Electrical/Mechanical Logs (1 full set req'd.) | 2. Geologic Report | 3. DST Report | 4. Directional Survey |
| 5. Sundry Notice for plugging and cement verification | 6. Core Analysis | 7 Other: | |

34. I hereby certify that the foregoing and attached information is complete and correct as determined from all available records (see attached instructions):

Electronic Submission #465847 Verified by the BLM Well Information System.
For OXY USA INCORPORATED, sent to the Carlsbad
Committed to AFMSS for processing by DINAH NEGRETE on 09/25/2019 (19DCN0252SE)

Name (please print) JANA MENDIOLA

Title REGULATORY SPECIALIST

Signature (Electronic Submission)

Date 05/20/2019

Title 18 U.S.C. Section 1001 and Title 43 U.S.C. Section 1212, make it a crime for any person knowingly and willfully to make to any department or agency of the United States any false, fictitious or fraudulent statements or representations as to any matter within its jurisdiction.

** REVISED ** REVISED ** REVISED ** REVISED ** REVISED ** REVISED ** REVISED ** REVISED **

Additional data for transaction #465847 that would not fit on the form

32. Additional remarks, continued

Logs were mailed 5/17/19.

Log Header, Directional Survey, As-Drilled Amended C-102 plat & WBD are attached.

District I
1625 N. French Dr., Hobbs, NM 88240
Phone: (575) 393-6161 Fax: (575) 393-0720
District II
811 S. First St., Artesia, NM 88210
Phone: (575) 746-1283 Fax: (575) 746-9720
District III
1000 Rio Bravos Road, Aztec, NM 87410
Phone: (505) 334-6178 Fax: (505) 334-6170
District IV
1220 S. St. Francis Dr., Santa Fe, NM 87505
Phone: (505) 476-3460 Fax: (505) 476-3462

State of New Mexico
Energy, Minerals & Natural Resources Department
OIL CONSERVATION DIVISION
1220 South St. Francis Dr.
Santa Fe, NM 87505

Form C-102
Revised August 1, 2011
Submit one copy to appropriate
District Office

☒ AMENDED REPORT
(As-Drilled)

WELL LOCATION AND ACREAGE DEDICATION PLAT

API Number 30-015-44640	Pool Code 98220	Pool Name Purple Sage Wolfcamp
Property Code 320631	Property Name CORRAL CANYON "36-25" FEDERAL COM	Well Number 31H
OGRID No. 16696	Operator Name OXY USA INC.	Elevation 3111.5'

Surface Location

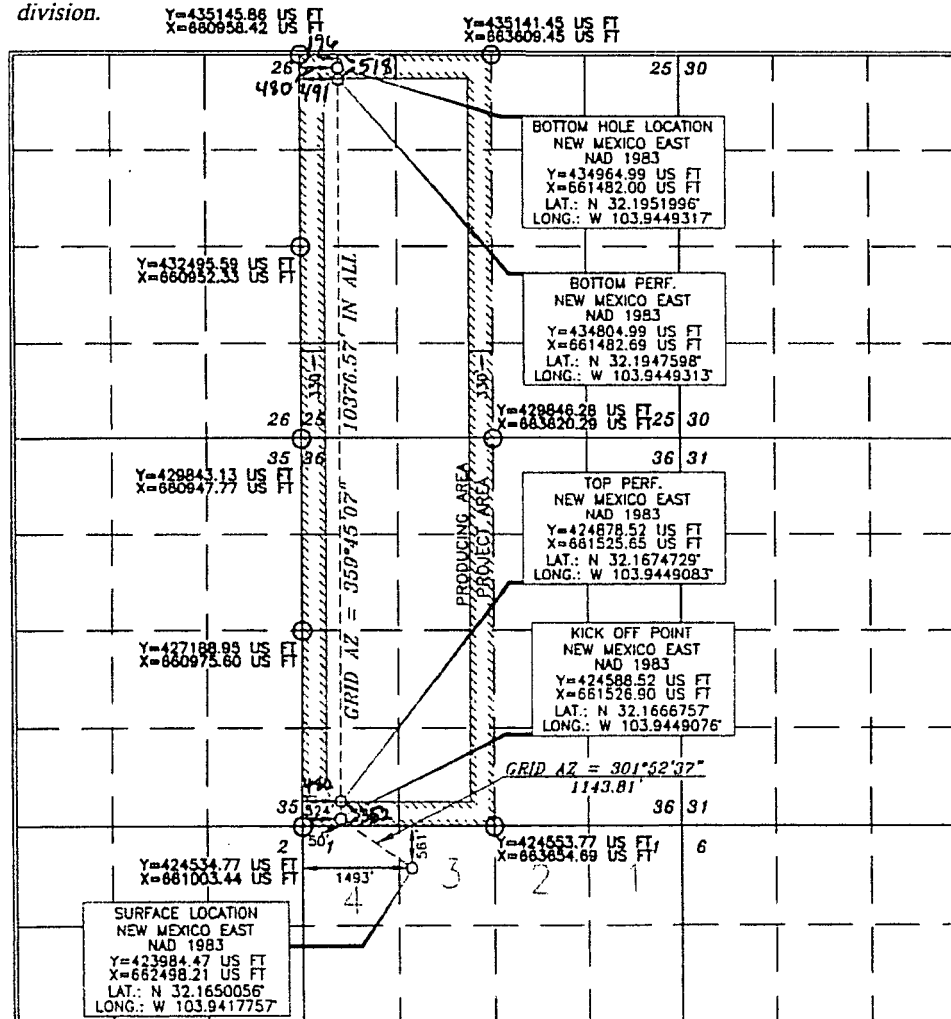
UL or lot no.	Section	Township	Range	Lot Idn	Feet from the	North/South line	Feet from the	East/West line	County
3	1	25 SOUTH	29 EAST, N.M.P.M.		561'	NORTH	1493'	WEST	EDDY

Bottom Hole Location If Different From Surface

UL or lot no.	Section	Township	Range	Lot Idn	Feet from the	North/South line	Feet from the	East/West line	County
D	25	24 SOUTH	29 EAST, N.M.P.M.		190' 196'	NORTH	504' 480'	WEST	EDDY

Dedicated Acres 640	Joint or Infill Y	Consolidation Code	Order No. LTP - 518 FNL 491 FWL FTP - 352 FSL 480 FWL
-------------------------------	-----------------------------	--------------------	---

No allowable will be assigned to this completion until all interests have been consolidated or a non-standard unit has been approved by the division.



OPERATOR CERTIFICATION

I hereby certify that the information contained herein is true and complete to the best of my knowledge and belief, and that this organization either owns a working interest or undivided mineral interest in the land including the proposed bottom hole location or has a right to drill this well at this location pursuant to a contract with an owner of such a mineral or working interest, or to a voluntary pooling agreement or a compulsory pooling order.

Authorized by the Division

Signature: *[Signature]* Date: **2/19/19**
Printed Name: **Jana Mendiola**
E-mail Address: **jana_mendiola@oxy.com**

SURVEYOR CERTIFICATION

I hereby certify that the well location shown on this plat was plotted from reliable and accurate surveys made by me or under my supervision, and that the same is true and correct to the best of my belief.

Signature and Seal: *[Signature]*
Professional Surveyor
Date of Survey: **JULY 24, 2017**
Certificate Number: **15079**