

30-005-63887



New Mexico Oil Conservation Division
District 2 – Artesia Office
Raymond Podany, District Geologist
811 S. First Street
Artesia, NM 88210

NM OIL CONSERVATION
ARTESIA DISTRICT

OCT 30 2019

RECEIVED

October 28, 2019

Attached is the Current and Proposed Wellbore Diagram requested on the following well to be filed in your office:

Volleyball
API # 30-005-63887

Please let me know if you need anything further.

If you have questions, please feel free to contact me or Kyle Alpers at kalpers@aecn.com.

Thank you,

Shelby Dutton
Revenue Accountant
Engineering Analyst

Armstrong Energy Corporation
PO Box 1973
Roswell, NM 88202-1973
Direct Line 575-623-2999 Ext. 309
Fax 575-622-2512
sdutton@aecn.com

Need: C103 w/Perfs+362
Test of Abo FM.
C102. PLAT. Abo FM.

RUB



RECEIVED

3,675' GR

LAST UPDATED
10/28/2019

Queen - 394'

San Andres - 912'

Glorieta - 2,194'

Tubb - 3,546'

Abo - 4,291'

Wolfcamp - 4,928'

17 1/2" hole

13 3/8" 53.5#/ft @ 40', 25sx of "C"

TOC @ 330'

12 1/4" hole

8 5/8" 24#/ft @ 1,075', 590 sx of "C"
390 sx of "C" 1st stage/200 sx 2nd stage

Perfs 4,818'-4,915'

CIBP @ 5,146' 35' Cement on top

Perfs 5,190'-5,189', 5,183'-5,181', 5,181'-5,180',
5,177'-5,175', 5,173', 5,169', 5,166', 5,163' - Date 7/6/2007

CIBP @ 5,220' 20' Cement on top

Perfs 5,228'-5,227", 5,239'-5,237', 5,251'-5,250',
5,257'-5,255', 5,262'-5,261' - Date 6/28/2007

CIBP @ 5,300' 20' Cement on top

Perfs 5,311'-5,318' - Date 6/25/2007

CIBP @ 5,348' 20' Cement on top

Perfs 5,356'-5,378' - Date 6/19/2007

7 7/8" hole

5 1/2" 17# @ 5,450',
500 sx of "C" 1st stage/300 sx 2nd stage

Armstrong Energy Corporation

Volleyball State #1

660' FSL & 660' FWL
Section 02, T12S, R26E
Lea County, New Mexico

API Number 30-005-63887
Spud Date: 02/15/2007

Downhole Equipment

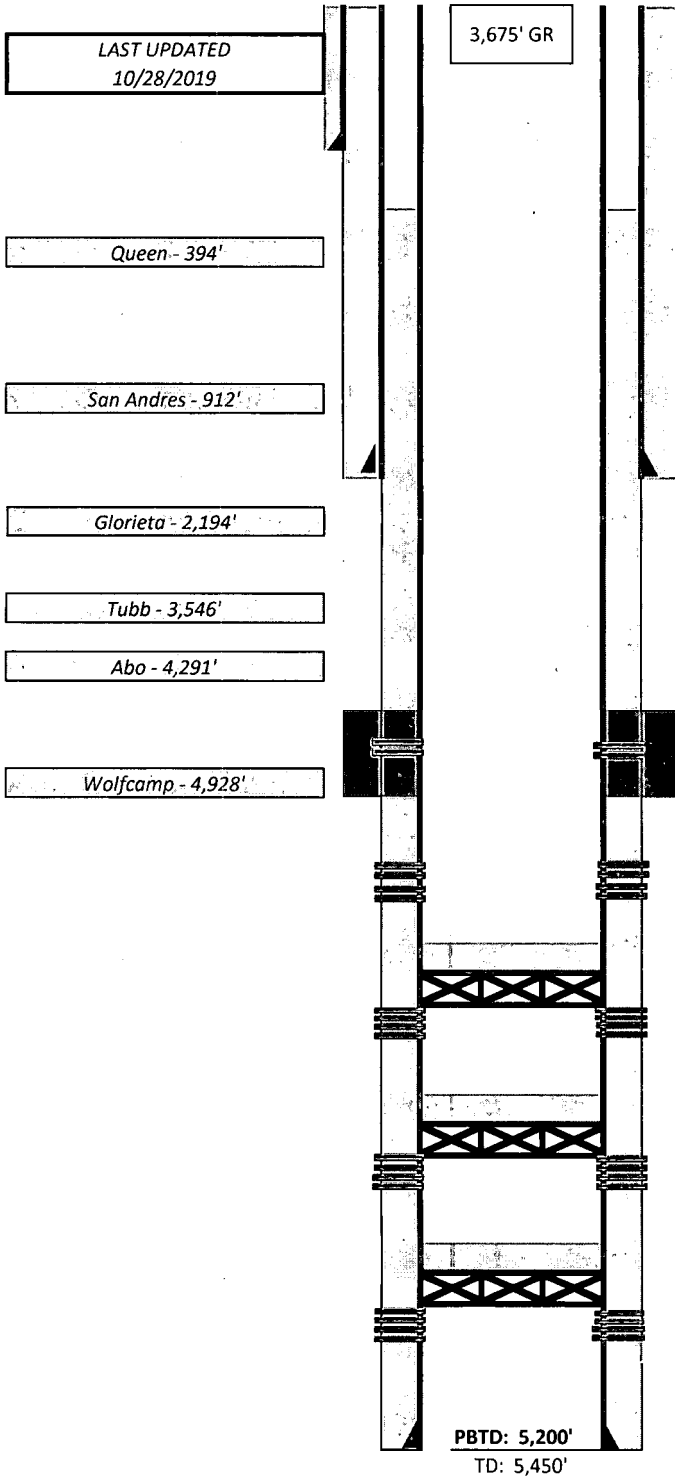
Surface Equipment

Notes

Abo ✓

PBTD: 5,111'

TD: 5,450'



Proposed Procedure

17 1/2" hole

13 3/8" 53.5#/ft @ 40', 25sx of "C"

TOC @ 330'

12 1/4" hole

8 5/8" 24#/ft @ 1,075', 590 sx of "C"
390 sx of "C" 1st stage/200 sx 2nd stage

Perfs 4,818'-4,915' - Sqz w/ 50 sx of "C"

Perfs 5,190'-5,189', 5,183'-5,181, 5,181'-5,180',
5,177'-5,175', 5,173', 5,169', 5,166', 5,163' - Date 7/6/2007

CIBP @ 5,220' 20' Cement on top

Perfs 5,228'-5,227", 5,239'-5,237', 5,251'-5,250'
5,257'-5,255', 5,262-5,261' - Date 6/28/2007

CIBP @ 5,300' 20'Cement on top

Perfs 5,311'-5,318' - Date 6/25/2007

CIBP @ 5,348' 20' Cement on top

Perfs 5,356'-5,378' - Date 6/19/2007

7 7/8" hole

5 1/2" 17# @ 5,450',
500 sx of "C" 1st stage/300 sx 2nd stage

Armstrong Energy Corporation

Volleyball State #1

660' FSL & 660' FWL
Section 02, T12S, R26E
Lea County, New Mexico

API Number 30-005-63887
Spud Date: 02/15/2007

Downhole Equipment

Surface Equipment

Notes

Abo ✓

Rev 102