

RECEIVED

DISTRICT I  
1625 N. FRENCH DR., BOBBS, NM 88240  
Phone: (505) 393-6181 Fax: (505) 393-0720

DISTRICT II  
811 S. FIRST ST., ARTESIA, NM 88210  
Phone: (505) 748-1265 Fax: (505) 748-9720

DISTRICT III  
1000 RIO BRAZOS RD., AZUSA, NM 88001  
Phone: (505) 334-8178 Fax: (505) 334-8170

DISTRICT IV  
1220 S. ST. FRANCIS DR., SANTA FE, NM 87505  
Phone: (505) 476-3480 Fax: (505) 476-3482

State of New Mexico  
Energy, Minerals & Natural Resources Department  
OIL CONSERVATION DIVISION  
1220 SOUTH ST. FRANCIS DR.  
Santa Fe, New Mexico 87505

Form C-102  
Revised August 1, 2011  
Submit one copy to appropriate  
District Office

AMENDED REPORT

WELL LOCATION AND ACREAGE DEDICATION PLAT

API Number 30-015-46545	Pool Code 33740	Pool Name Engle Wells W. Cat Bone Spring
Property Code 326187	Property Name PRECIOUS 30_18 FEDERAL COM	Well Number 25H
OGRID No. 16696	Operator Name OXY USA INC.	Elevation 3344.8'

Surface Location

UL or lot No.	Section	Township	Range	Lot Idn	Feet from the	North/South line	Feet from the	East/West line	County
A	31	23-S	31-E		100	NORTH	1130	EAST	EDDY

Bottom Hole Location If Different From Surface

UL or lot No.	Section	Township	Range	Lot Idn	Feet from the	North/South line	Feet from the	East/West line	County
1	18	23-S	31-E		2623	SOUTH	1270	EAST	EDDY

Dedicated Acres 320	Joint or Infill Infill	Consolidation Code	Order No.
------------------------	---------------------------	--------------------	-----------

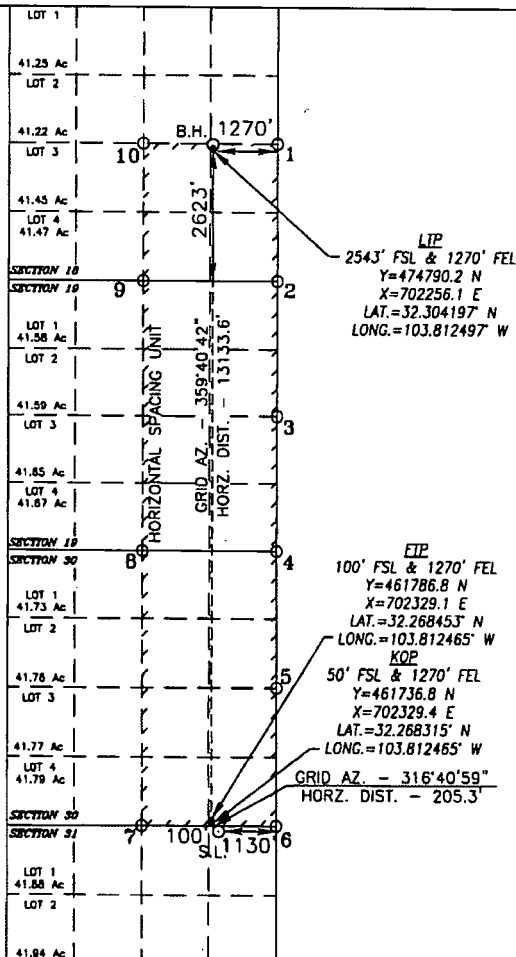
NO ALLOWABLE WILL BE ASSIGNED TO THIS COMPLETION UNTIL ALL INTERESTS HAVE BEEN CONSOLIDATED  
OR A NON-STANDARD UNIT HAS BEEN APPROVED BY THE DIVISION

PROPOSED BOTTOM  
HOLE LOCATION  
Y=474870.2 N  
X=702255.6 E  
LAT.=32.304417° N  
LONG.=103.812498° W

POINT LEGEND	
1	Y=474895.9 N X=703525.5 E
2	Y=472249.5 N X=703536.9 E
3	Y=468616.6 N X=703555.6 E
4	Y=468675.1 N X=703571.0 E
5	Y=464333.7 N X=703585.0 E
6	Y=461692.5 N X=703589.6 E
7	Y=461680.7 N X=700956.7 E
8	Y=468962.4 N X=700928.3 E
9	Y=472244.2 N X=700898.0 E
10	Y=474884.1 N X=700884.2 E

\* ALL COORDINATES ARE  
NAD 83 VALUES

SURFACE LOCATION  
Y=461587.4 N  
X=702470.2 E  
LAT.=32.267903° N  
LONG.=103.812012° W



OPERATOR CERTIFICATION

I hereby certify that the information herein is true and complete to the best of my knowledge and belief, and that this organization either owns a working interest or unleased mineral interest in the land including the proposed bottom hole location or has a right to drill this well at this location pursuant to a contract with an owner of such mineral or working interest, or to a voluntary pooling agreement or a compulsory pooling order heretofore entered by the division.

Signature  
Date  
Printed Name  
E-mail Address

SURVEYOR CERTIFICATION

I hereby certify that the well location shown on this plat was plotted from field notes of actual surveys made by me or under my supervision, and that the same is true and correct to the best of my belief.

JULY 10, 2019

Date of Survey

Signature & Seal of Professional Surveyor



Chad Hargrow 8/23/19  
Certificate No. CHAD HARGROW 17777  
W.O. # 19-1290 DRAWN BY: CD