

Submit 1 Copy To Appropriate District Office

District I - (575) 393-6161
1625 N. French Dr., Hobbs, NM 88240
District II - (575) 748-1283
811 S. First St., Artesia, NM 88210
District III - (505) 334-6178
1000 Rio Brazos Rd., Aztec, NM 87410
District IV - (505) 476-3460
1220 S. St. Francis Dr., Santa Fe, NM 87505

RECEIVED

State of New Mexico
Energy, Minerals and Natural Resources

NOV 25 2019

OIL CONSERVATION DIVISION

DISTRICT IV - ARTESIA
1000 Rio Brazos Rd., Aztec, NM 87410
South St. Francis Dr.
Santa Fe, NM 87505

Form C-103
Revised July 18, 2013

WELL API NO.
30-015-46375

5. Indicate Type of Lease
STATE ☒ FEE ☐

6. State Oil & Gas Lease No.
VO-4949

7. Lease Name or Unit Agreement Name
War Hawk 2 State

8. Well Number
401H

9. OGRID Number
7377

10. Pool name or Wildcat
County Line Tank; Abo

SUNDRY NOTICES AND REPORTS ON WELLS

(DO NOT USE THIS FORM FOR PROPOSALS TO DRILL OR TO DEEPEN OR PLUG BACK TO A DIFFERENT RESERVOIR. USE "APPLICATION FOR PERMIT" (FORM C-101) FOR SUCH PROPOSALS.)

1. Type of Well: Oil Well ☒ Gas Well ☐ Other ☐

2. Name of Operator
EOG Resources, Inc.

3. Address of Operator
104 South Fourth Street, Artesia, NM 88210

4. Well Location

Unit Letter _____ Lot 16 : 2962 feet from the South line and 470 feet from the East line
Section 3 Township 16S Range 29E NMPM Eddy County

11. Elevation (Show whether DR, RKB, RT, GR, etc.)
3744' GR

12. Check Appropriate Box to Indicate Nature of Notice, Report or Other Data

NOTICE OF INTENTION TO:

PERFORM REMEDIAL WORK ☐ PLUG AND ABANDON ☐
TEMPORARILY ABANDON ☐ CHANGE PLANS ☒
PULL OR ALTER CASING ☐ MULTIPLE COMPL ☐
DOWNHOLE COMMINGLE ☐
CLOSED-LOOP SYSTEM ☐
OTHER: ☐

SUBSEQUENT REPORT OF:

REMEDIAL WORK ☐ ALTERING CASING ☐
COMMENCE DRILLING OPNS. ☐ P AND A ☐
CASING/CEMENT JOB ☐
OTHER: ☐

13. Describe proposed or completed operations. (Clearly state all pertinent details, and give pertinent dates, including estimated date of starting any proposed work). SEE RULE 19.15.7.14 NMAC. For Multiple Completions: Attach wellbore diagram of proposed completion or recompletion.

EOG Resources, Inc. respectfully requests to move Surface and Bottom Hole locations as follows:

Surface from: 2962' FSL & 470' FEL of Section 3-16S-29E to 2970' FSL & 276' FEL of Section 2-16S-29E

BHL from 2970' FSL & 100' FEL of Section 2-16S-29E to 2971' FSL & 100' FWL of Section 2-16S-29E

The casing and cement will remain the same as the approved APD.

Attached is the new C-102 with the new location, additional points sheet and Gas Capture Plan.

Spud Date:

Rig Release Date:

I hereby certify that the information above is true and complete to the best of my knowledge and belief.

SIGNATURE Tina Huerta TITLE Regulatory Specialist DATE November 25, 2019

Type or print name Tina Huerta E-mail address: tina_huerta@eogresources.com PHONE: 575-748-4168
For State Use Only

APPROVED BY: Raymond R. Ruda TITLE Geology/St DATE 12-9-19
Conditions of Approval (if any):

District I
1625 N. French Dr., Hobbs, NM 88240
Phone: (575) 393-6161 Fax: (575) 393-0720
District II
811 S. First St., Artesia, NM 88210
Phone: (575) 748-1283 Fax: (575) 748-9720
District III
1000 Rio Brazos Road, Aztec, NM 87410
Phone: (505) 334-6178 Fax: (505) 334-6170
District IV
1220 S. St. Francis Dr., Santa Fe, NM 87505
Phone: (505) 476-3460 Fax: (505) 476-3462

State of New Mexico
Energy, Minerals & Natural Resources
Department
OIL CONSERVATION DIVISION
1220 South St. Francis Dr.
Santa Fe, NM 87505

FORM C-102
Revised August 1, 2011
Submit one copy to appropriate
District Office

☐ AMENDED REPORT

WELL LOCATION AND ACREAGE DEDICATION PLAT

¹ API Number 30-015-46375		² Pool Code 97197		³ Pool Name County Line Tank; Abo	
⁴ Property Code 326204		⁵ Property Name WAR HAWK 2 STATE		⁶ Well Number 401H	
⁷ OGRID No. 7377		⁸ Operator Name EOG RESOURCES, INC.		⁹ Elevation 3744'	

¹⁰Surface Location

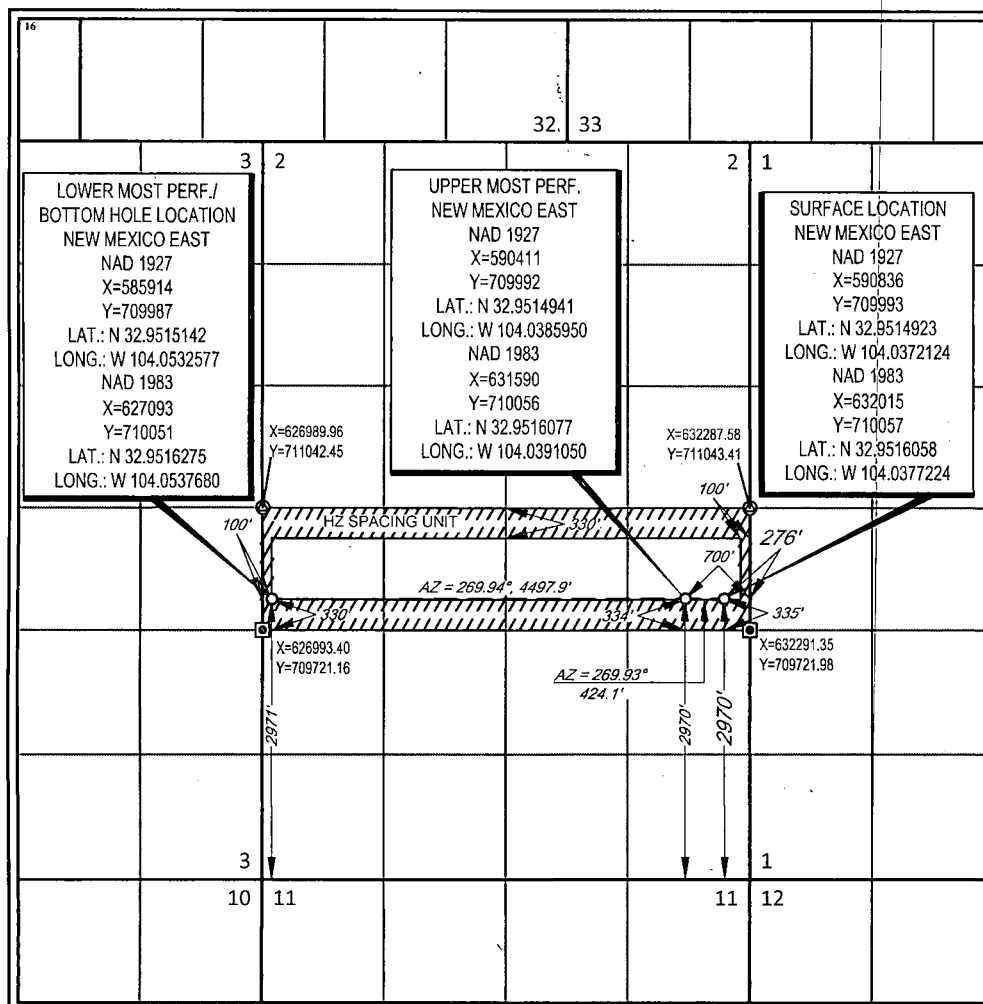
UL or lot no.	Section	Township	Range	Lot Idn	Feet from the	North/South line	Feet from the	East/West line	County
16	2	16-S	29-E	-	2970	SOUTH	276	EAST	EDDY

¹¹Bottom Hole Location If Different From Surface

UL or lot no.	Section	Township	Range	Lot Idn	Feet from the	North/South line	Feet from the	East/West line	County
13	2	16-S	29-E	-	2971	SOUTH	100	WEST	EDDY

¹² Dedicated Acres 160.00	¹³ Joint or Infill	¹⁴ Consolidation Code	¹⁵ Order No.
---	-------------------------------	----------------------------------	-------------------------

No allowable will be assigned to this completion until all interests have been consolidated or a non-standard unit has been approved by the division.



¹⁷OPERATOR CERTIFICATION

I hereby certify that the information contained herein is true and complete to the best of my knowledge and belief, and that this organization either owns a working interest or unleased mineral interest in the land including the proposed bottom hole location or has a right to drill this well at this location pursuant to a contract with an owner of such a mineral or working interest, or to a voluntary pooling agreement or a compulsory pooling order heretofore entered by the division.

Tina Huerta 11/25/19
Signature Date

Tina Huerta
Printed Name
tina_huerta@eogresources.com
E-mail Address

¹⁸SURVEYOR CERTIFICATION

I hereby certify that the well location shown on this plat was plotted from field notes of actual surveys made by me or under my supervision, and that the same is true to the best of my belief.

09/05/2019

Date of Survey
Signature and Seal of Professional Surveyor

Certificate Number

RP 12-9-19

Intent ☒ As Drilled ☐ Revised 11/25/19

API #
30-015-46375

Operator Name: EOG Resources, Inc.	Property Name: War Hawk 2 State	Well Number 401H
---------------------------------------	------------------------------------	---------------------

Kick Off Point (KOP)

UL Lot 16	Section 2	Township 16S	Range 29E	Lot	Feet 2970	From N/S South	Feet 276	From E/W East	County Eddy
Latitude 32.9516058					Longitude -104.0377224			NAD 83	

First Take Point (FTP)

UL Lot 16	Section 2	Township 16S	Range 29E	Lot	Feet 2970	From N/S South	Feet 700	From E/W East	County Eddy
Latitude 32.9516077					Longitude -104.0391050			NAD 83	

Last Take Point (LTP)

UL Lot 13	Section 2	Township 16S	Range 29E	Lot	Feet 2971	From N/S South	Feet 100	From E/W West	County Eddy
Latitude 32.9516275					Longitude -104.0537680			NAD 83	

Is this well the defining well for the Horizontal Spacing Unit?

☒

Is this well an infill well?

☐

If infill is yes please provide API if available, Operator Name and well number for Defining well for Horizontal Spacing Unit.

API #

Operator Name:	Property Name:	Well Number
----------------	----------------	-------------

KZ 06/29/2018

District I
1625 N. French Dr., Hobbs, NM 88240
District II
811 S. First St., Artesia, NM 88210
District III
1000 Rio Brazos Road, Aztec, NM 87410
District IV
1220 S. St. Francis Dr., Santa Fe, NM 87505

State of New Mexico
Energy, Minerals and Natural Resources Department
Oil Conservation Division
1220 South St. Francis Dr.
Santa Fe, NM 87505

Submit Original
to Appropriate
District Office

GAS CAPTURE PLAN

Date: 11/25/19

☐ Original Operator & OGRID No.: EOG Resources, Inc. 7377
☒ Amended - Reason for Amendment: New Surface location

This Gas Capture Plan outlines actions to be taken by the Operator to reduce well/production facility flaring/venting for new completion (new drill, recomple to new zone, re-frac) activity.

Note: Form C-129 must be submitted and approved prior to exceeding 60 days allowed by Rule (Subsection A of 19.15.18.12 NMAC).

Well(s)/Production Facility – Name of facility

The well(s) that will be located at the production facility are shown in the table below.

Well Name	API	Well Location (ULSTR)	Footages	Expected MCF/D	Flared or Vented	Comments
War Hawk 2 State 401H	30-015-46375	Lot 16-2-16S-29E	2970'FSL & 276'FEL	500	None	

Gathering System and Pipeline Notification

Well(s) will be connected to a production facility after flowback operations are complete, if gas transporter system is in place. The gas produced from production facility is dedicated to DCP Operating Company and will be connected to DCP Operating Company low pressure gathering system located in Eddy County, New Mexico. It will require 1500' of pipeline to connect the facility to low pressure gathering system. EOG Resources, Inc provides (periodically) to DCP Operating Company a drilling, completion and estimated first production date for wells that are scheduled to be drilled in the foreseeable future. In addition, EOG Resources, Inc and DCP Operating Company have periodic conference calls to discuss changes to drilling and completion schedules. Gas from these wells will be processed at DCP Operating Company Processing Plant located in Sec.7, Twn.18S, Rng.28E, Eddy County, New Mexico. The actual flow of the gas will be based on compression operating parameters and gathering system pressures.

Flowback Strategy

After the fracture treatment/completion operations, well(s) will be produced to temporary production tanks and gas will be flared or vented. During flowback, the fluids and sand content will be monitored. When the produced fluids contain minimal sand, the wells will be turned to production facilities. Gas sales should start as soon as the wells start flowing through the production facilities, unless there are operational issues on DCP Operating Company system at that time. Based on current information, it is EOG Resources, Inc's belief the system can take this gas upon completion of the well(s).

Safety requirements during cleanout operations from the use of underbalanced air cleanout systems may necessitate that sand and non-pipeline quality gas be vented and/or flared rather than sold on a temporary basis.

Alternatives to Reduce Flaring

Below are alternatives considered from a conceptual standpoint to reduce the amount of gas flared.

- Power Generation – On lease
 - Only a portion of gas is consumed operating the generator, remainder of gas will be flared
- Compressed Natural Gas – On lease
 - Gas flared would be minimal, but might be uneconomical to operate when gas volume declines
- NGL Removal – On lease
 - Plants are expensive, residue gas is still flared, and uneconomical to operate when gas volume declines