

District I
1625 N. French Dr., Hobbs, NM 88240
Phone: (575) 393-6161 Fax: (575) 393-0720
District II
811 S. First St., Artesia, NM 88210
Phone: (575) 748-1283 Fax: (575) 748-9720
District III
1000 Rio Brazos Road, Aztec, NM 87410
Phone: (505) 334-6178 Fax: (505) 334-6170
District IV
1220 S. St. Francis Dr., Santa Fe, NM 87505
Phone: (505) 476-3460 Fax: (505) 476-3462

State of New Mexico
Energy, Minerals & Natural Resources Department
OIL CONSERVATION DIVISION
1220 South St. Francis Dr.
Santa Fe, NM 87505
DISTRICT I-ARTESIA A.O.C.D.

Form C-102
Revised August 1, 2011

Submit one copy to appropriate District Office

☐ AMENDED REPORT

WELL LOCATION AND ACREAGE DEDICATION PLAT

¹ API Number 30-015.46577	² Pool Code 98220	³ Pool Name PURPLE SAGE; WOLFCAMP
⁴ Property Code 326778	⁵ Property Name PAPAS FRITAS 27-22 FED COM	⁶ Well Number 622H
⁷ OGRID No. 6137	⁸ Operator Name DEVON ENERGY PRODUCTION COMPANY, L.P.	⁹ Elevation 3043.7'

Surface Location

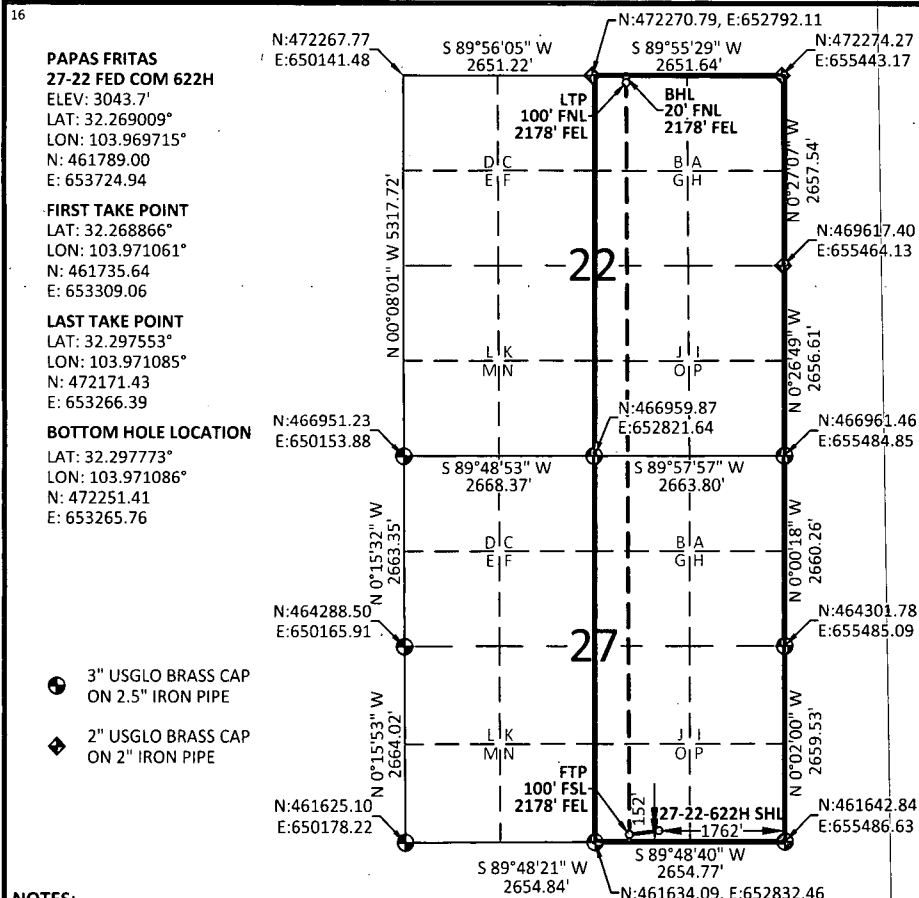
UL or lot no.	Section	Township	Range	Lot Idn	Feet from the	North/South line	Feet from the	East/West line	County
O	27	23-S	29-E		152	SOUTH	1762	EAST	EDDY

Bottom Hole Location If Different From Surface

UL or lot no.	Section	Township	Range	Lot Idn	Feet from the	North/South line	Feet from the	East/West line	County
B	22	23-S	29-E		20	NORTH	2178	EAST	EDDY

¹² Dedicated Acres 640	¹³ Joint or Infill	¹⁴ Consolidation Code	¹⁵ Order No.
---	-------------------------------	----------------------------------	-------------------------

No allowable will be assigned to this completion until all interests have been consolidated or a non-standard unit has been approved by the division.



NOTES:

- BEARINGS SHOWN ARE GRID BASED ON THE NEW MEXICO STATE PLANE EAST ZONE COORDINATE SYSTEM (3001), NAD 83 (2011), BASED FROM GPS OBSERVATIONS, OCCUPYING A WHS CONTROL POINT (5/8" REBAR), LOCATED AT NORTH: 456034.443, EAST: 653560.641, ELEVATION: 3101.373, DETERMINED BY AN OPUS SOLUTION ON DECEMBER 3RD, 2018.
- DISTANCES DEPICTED HEREON ARE REPORTED AS GROUND DISTANCE IN US SURVEY FEET USING A COMBINED SCALE FACTOR OF 1.000220979
- ELEVATIONS ARE OF NAVD 88 COMPUTED USING GEOID 12B.

17 OPERATOR CERTIFICATION

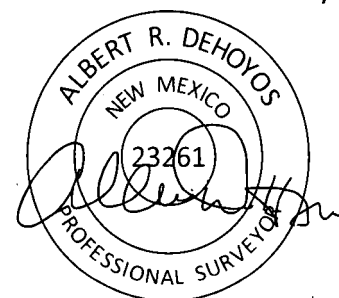
I hereby certify that the information contained herein is true and complete to the best of my knowledge and belief, and that this organization either owns a working interest or unleased mineral interest in the land including the proposed bottom hole location or has a right to drill this well at this location pursuant to a contract with an owner of such a mineral or working interest, or to a voluntary pooling agreement or a compulsory pooling order heretofore entered by the division.

Erin Workman 10/01/2019
Signature Date
Erin Workman
Printed Name
Erin.workman@dmv.com
E-mail Address

18 SURVEYOR CERTIFICATION

I hereby certify that the well location shown on this plat was plotted from field notes of actual surveys made by me or under my supervision, and that the same is true and correct to the best of my belief.

03/06/2019
Date of Survey
Signature and Seal of Professional Surveyor:



Certificate No. 23261 Albert Dehoyos
Drawn by: TMW Checked by: ARD Date: 04/29/2019

NSL

Ruf 1-9-2020

RECEIVED

DEC 26 2019

DISTRICT 7 - ARTESIA O.C.D.

Intent ☒ As Drilled ☐

API #

Operator Name:
DEVON ENERGY PRODUCTION COMPANY, L.P.Property Name:
PAPAS FRITAS 27-22 FED COMWell Number
622H

Kick Off Point (KOP)

UL	Section	Township	Range	Lot	Feet	From N/S	Feet	From E/W	County
	27	23S	29E		50	SOUTH	2178	EAST	EDDY
Latitude					Longitude				NAD
32.268733					-103.971062				83

First Take Point (FTP)

UL	Section	Township	Range	Lot	Feet	From N/S	Feet	From E/W	County
O	27	23-S	29-E		100	SOUTH	2178	EAST	EDDY
Latitude					Longitude				NAD
32.268866°					-103.971061°				83

Last Take Point (LTP)

UL	Section	Township	Range	Lot	Feet	From N/S	Feet	From E/W	County
B	22	23-S	29-E		100	NORTH	2178	EAST	EDDY
Latitude					Longitude				NAD
32.297553°					-103.971085°				83

Is this well the defining well for the Horizontal Spacing Unit? ☒ YESIs this well an infill well? ☐ NO

If infill is yes provide API if available, Operator name and well number for Defining well for Horizontal Spacing Unit.

API #

Operator Name:

Property Name:

Well Number

KZ 06/29/2018