

UNITED STATES
DEPARTMENT OF THE INTERIOR
BUREAU OF LAND MANAGEMENT

OCD Artesia

FORM APPROVED
OMB No. 1004-0137
Expires: July 31, 2010

WELL COMPLETION OR RECOMPLETION REPORT AND LOG

5. Lease Serial No. NMNM88139	
6. If Indian, Allottee or Tribe Name	
7. Unit or CA Agreement Name and No. NMNM139613	
8. Lease Name and Well No. CORRAL FLY 35-26 FEDERAL COM 36H	
9. API Well No. 30-015-44731-00-S1	
10. Field and Pool, or Exploratory PURPLE SAGE-WOLFCAMP (GAS)	
11. Sec., T., R., M., or Block and Survey or Area Sec 2 T25S R29E Mer NMP	
12. County or Parish EDDY	13. State NM
17. Elevations (DF, KB, RT, GL)* 3072 GL	

1a. Type of Well ☒ Oil Well ☐ Gas Well ☐ Dry ☐ Other
b. Type of Completion ☒ New Well ☐ Work Over ☐ Deepen ☐ Plug Back ☐ Diff. Resvr.
Other _____

2. Name of Operator
OXY USA INCORPORATED
Contact: JANA MENDIOLA
E-Mail: janalyn_mendiola@oxy.com

3. Address 5 GREENWAY PLAZA SUITE 110
HOUSTON, TX 77046-0521
3a. Phone No. (include area code)
Ph: 432-685-5936

4. Location of Well (Report location clearly and in accordance with Federal requirements)*
At surface Lot 1 434FNL 1248FEL 32.165341 N Lat, 103.950633 W Lon
Sec 2 T25S R29E Mer NMP
At top prod interval reported below SESE 384FSL 394FEL 32.167580 N Lat, 103.947860 W Lon
Sec 35 T24S R29E Mer NMP
At total depth NENE 287FNL 442FEL 32.194880 N Lat, 103.947910 W Lon
Sec 26 T24S R29E Mer NMP

14. Date Spudded
10/03/2018
15. Date T.D. Reached
12/28/2018
16. Date Completed
☐ D & A ☒ Ready to Prod.
03/14/2019

18. Total Depth: MD 20483
TVD 10364
19. Plug Back T.D.: MD 20465
TVD 10364
20. Depth Bridge Plug Set: MD
TVD

21. Type Electric & Other Mechanical Logs Run (Submit copy of each)
GAMMARAY CBL

22. Was well cored? ☒ No ☐ Yes (Submit analysis)
Was DST run? ☒ No ☐ Yes (Submit analysis)
Directional Survey? ☐ No ☒ Yes (Submit analysis)

23. Casing and Liner Record (Report all strings set in well)

Hole Size	Size/Grade	Wt. (#/ft.)	Top (MD)	Bottom (MD)	Stage Cementer Depth	No. of Sks. & Type of Cement	Slurry Vol. (BBL)	Cement Top*	Amount Pulled
14.750	10.750 J55	45.5	0	453		412	99	0	
9.875	7.625 L80	26.4	0	9530	3305	1698	614	0	
6.750	5.500 P110	20.0	0	20483		884	214	6200	

24. Tubing Record

Size	Depth Set (MD)	Packer Depth (MD)	Size	Depth Set (MD)	Packer Depth (MD)	Size	Depth Set (MD)	Packer Depth (MD)

25. Producing Intervals

Formation	Top	Bottom	Perforated Interval	Size	No. Holes	Perf. Status
A) WOLFCAMP	10537	20387	10537 TO 20387	0.370	1200	ACTIVE
B)						
C)						
D)						

26. Perforation Record

27. Acid, Fracture, Treatment, Cement Squeeze, Etc.

Depth Interval	Amount and Type of Material
10537 TO 20387	9497754G SLICKWATER + 24990G 7.5% HCL ACID W/ 14996479# SAND

28. Production - Interval A

Date First Produced	Test Date	Hours Tested	Test Production	Oil BBL	Gas MCF	Water BBL	Oil Gravity Corr. API	Gas Gravity	Production Method
03/17/2019	04/01/2019	24	→	4544.0	10925.0	9581.0			FLOW FROM WELL
Choke Size	Tbg. Press. Flwg.	Csg. Press.	24 Hr. Rate	Oil BBL	Gas MCF	Water BBL	Gas:Oil Ratio	Well Status	
74/128	SI	1600.0	→	4544	10925	9581	2404	POW	

28a. Production - Interval B

Date First Produced	Test Date	Hours Tested	Test Production	Oil BBL	Gas MCF	Water BBL	Oil Gravity Corr. API	Gas Gravity	Production Method
			→						Method 3 2019
Choke Size	Tbg. Press. Flwg.	Csg. Press.	24 Hr. Rate	Oil BBL	Gas MCF	Water BBL	Gas:Oil Ratio	Well Status	
	SI		→						

BUREAU OF LAND MANAGEMENT
CARLSBAD FIELD OFFICE

(See Instructions and spaces for additional data on reverse side)

ELECTRONIC SUBMISSION #468618 VERIFIED BY THE BLM WELL INFORMATION SYSTEM

** BLM REVISED ** BLM REVISED ** BLM REVISED ** BLM REVISED ** BLM REVISED **

Reclamation Due: 9/14/19

28b. Production - Interval C

Date First Produced	Test Date	Hours Tested	Test Production	Oil BBL	Gas MCF	Water BBL	Oil Gravity Corr. API	Gas Gravity	Production Method
			→						
Choke Size	Tbg. Press. Flwg. SI	Csg. Press.	24 Hr. Rate	Oil BBL	Gas MCF	Water BBL	Gas:Oil Ratio	Well Status	
			→						

28c. Production - Interval D

Date First Produced	Test Date	Hours Tested	Test Production	Oil BBL	Gas MCF	Water BBL	Oil Gravity Corr. API	Gas Gravity	Production Method
			→						
Choke Size	Tbg. Press. Flwg. SI	Csg. Press.	24 Hr. Rate	Oil BBL	Gas MCF	Water BBL	Gas:Oil Ratio	Well Status	
			→						

29. Disposition of Gas(Sold, used for fuel, vented, etc.)

SOLD

30. Summary of Porous Zones (Include Aquifers):

Show all important zones of porosity and contents thereof: Cored intervals and all drill-stem tests, including depth interval tested, cushion used, time tool open, flowing and shut-in pressures and recoveries.

31. Formation (Log) Markers

Formation	Top	Bottom	Descriptions, Contents, etc.	Name	Top
					Meas. Depth
BELL CANYON	3276	4114	OIL, GAS, WATER	RUSTLER	238
CHERRY CANYON	4115	5370	OIL, GAS, WATER	SALADO	585
BRUSHY CANYON	5371	7018	OIL, GAS, WATER	CASTILE	1850
BONE SPRING	7019	7967	OIL, GAS, WATER	LAMAR	3252
BONE SPRING 1ST	7968	8681	OIL, GAS, WATER	BELL CANYON	3276
BONE SPRING 2ND	8682	9888	OIL, GAS, WATER	CHERRY CANYON	4115
BONE SPRING 3RD	9889	10445	OIL, GAS, WATER	BRUSHY CANYON	5371
WOLFCAMP	10446		OIL, GAS, WATER	BONE SPRING	7019

32. Additional remarks (include plugging procedure):

52. FORMATION (LOG) MARKERS CONTD.

1ST BONE SPRING 7968' MD
 2ND BONE SPRING 8682' MD
 3RD BONE SPRING 9889' MD
 WOLFCAMP 10446' MD

Logs were mailed 6/12/19.

33. Circle enclosed attachments:

- | | | | |
|---|--------------------|---------------|-----------------------|
| 1. Electrical/Mechanical Logs (1 full set req'd.) | 2. Geologic Report | 3. DST Report | 4. Directional Survey |
| 5. Sundry Notice for plugging and cement verification | 6. Core Analysis | 7. Other: | |

34. I hereby certify that the foregoing and attached information is complete and correct as determined from all available records (see attached instructions):

Electronic Submission #468618 Verified by the BLM Well Information System.

For OXY USA INCORPORATED, sent to the Carlsbad

Committed to AFMSS for processing by DINAH NEGRETE on 09/27/2019 (19DCN0266SE)

Name (please print) JANA MENDIOLA

Title REGULATORY SPECIALIST

Signature (Electronic Submission)

Date 06/11/2019

Title 18 U.S.C. Section 1001 and Title 43 U.S.C. Section 1212, make it a crime for any person knowingly and willfully to make to any department or agency of the United States any false, fictitious or fraudulent statements or representations as to any matter within its jurisdiction.

**** REVISED ** REVISED ** REVISED ** REVISED ** REVISED ** REVISED ** REVISED ****

Additional data for transaction #468618 that would not fit on the form

32. Additional remarks, continued

Log Header, Directional Survey, As-Drilled Amended C-102 plat & WBD are attached.

District I
1625 N. French Dr., Hobbs, NM 88240
Phone: (575) 393-6161 Fax: (575) 393-0720
District II
811 S. First St., Artesia, NM 88210
Phone: (575) 748-1283 Fax: (575) 748-9720
District III
1000 Rio Hondo Road, Aztec, NM 87410
Phone: (505) 334-6178 Fax: (505) 334-6170
District IV
1220 S. St. Francis Dr., Santa Fe, NM 87505
Phone: (505) 476-3460 Fax: (505) 476-3462

State of New Mexico
Energy, Minerals & Natural Resources Department
OIL CONSERVATION DIVISION
1220 South St. Francis Dr.
Santa Fe, NM 87505

Form C-102
Revised August 1, 2011
Submit one copy to appropriate
District Office

☒ AMENDED REPORT
(As-Drilled)

WELL LOCATION AND ACREAGE DEDICATION PLAT

API Number 30-015-44731	Pool Code 98220	Pool Name Purple Sage Wolfcamp
Property Code 320767	Property Name CORRAL FLY "35-26" FEDERAL COM	Well Number 36H
OGRID No. 16696	Operator Name OXY USA INC.	Elevation 3072.2'

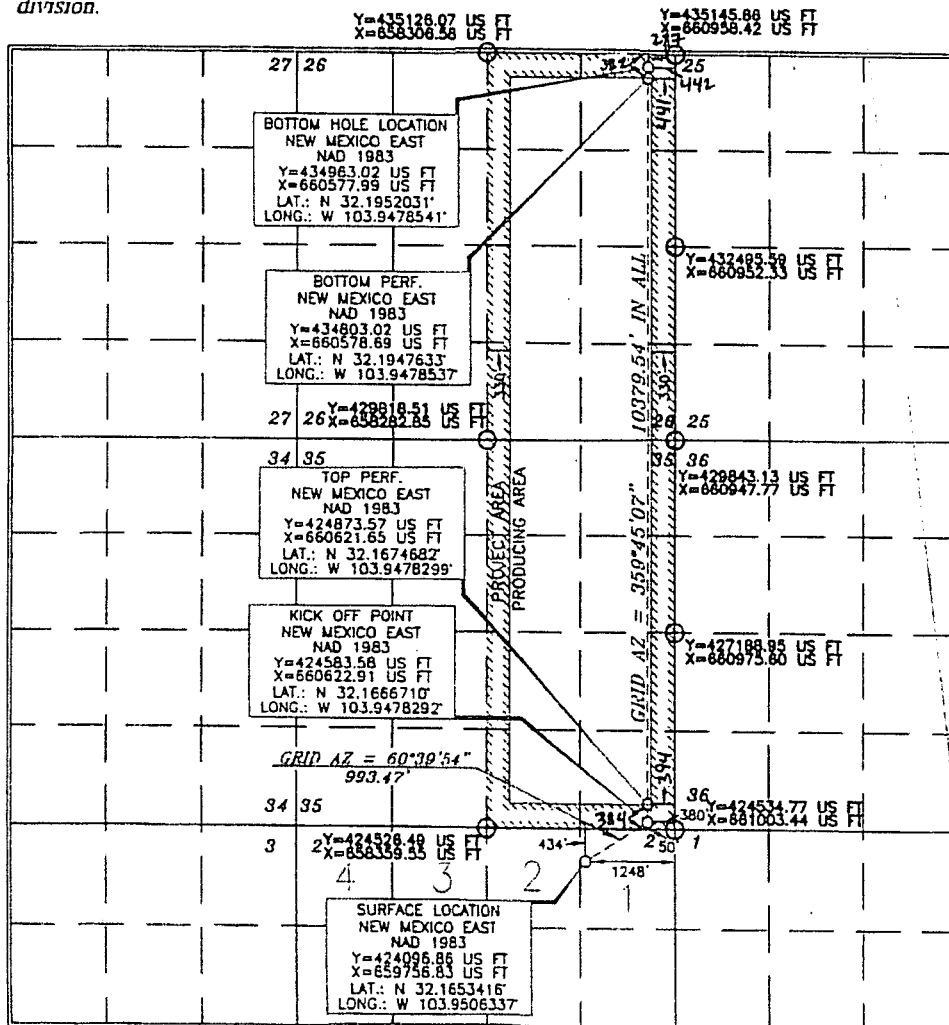
Surface Location

UL or lot no.	Section	Township	Range	Lot Idn	Feet from the	North/South line	Feet from the	East/West line	County
1	2	25 SOUTH	29 EAST, N.M.P.M.		434'	NORTH	1248'	EAST	EDDY

Bottom Hole Location If Different From Surface

UL or lot no.	Section	Township	Range	Lot Idn	Feet from the	North/South line	Feet from the	East/West line	County
A	26	24 SOUTH	29 EAST, N.M.P.M.		100' 287'	NORTH	380' 442'	EAST	EDDY
Dedicated Acres 640	Joint or Infill Y	Consolidation Code	Order No.	LTP- 382 FNL 441 FEL FTP- 384 FSL 394 FEL					

No allowable will be assigned to this completion until all interests have been consolidated or a non-standard unit has been approved by the division.



OPERATOR CERTIFICATION

I hereby certify that the information contained herein is true and complete to the best of my knowledge and belief, and that this organization either owns a working interest or undivided mineral interest in the land including the proposed bottom hole location or has a right to drill this well at this location pursuant to a contract with an owner of such a mineral or working interest, or as a voluntary pooling agreement or a compulsory pooling order heretofore entered by the division.

[Signature] 3/6/19
Date
Jana Mendiola
Printed Name
jana.mendiola@oxy.com
E-mail Address

SURVEYOR CERTIFICATION

I hereby certify that the well location shown on this plat was plotted from field notes of actual surveys made by me or under my supervision, and that the same is true and correct to the best of my belief.

15079
JUNE 28, 2017
Date of Survey
Signature and Seal of Professional Surveyor

[Signature] 7/26/2017
Certificate Number 15079