

DEC 20 2019

Form C-102

District I  
1625 N. French Dr., Hobbs, NM 88240  
Phone: (575) 393-6161 Fax: (575) 393-0720  
District II  
811 S. First St., Artesia, NM 88210  
Phone: (575) 748-1283 Fax: (575) 748-9720  
District III  
1000 Rio Brazos Road, Aztec, NM 87410  
Phone: (505) 334-6178 Fax: (505) 334-6170  
District IV  
1220 S. St. Francis Dr., Santa Fe, NM 87505  
Phone: (505) 476-3460 Fax: (505) 476-3462

State of New Mexico  
Energy, Minerals & Natural Resources Department  
OIL CONSERVATION DIVISION  
1220 South St. Francis Dr.  
Santa Fe, NM 87505

RECEIVED

Revised August 1, 2011

Submit one copy to appropriate  
District Office

☐ AMENDED REPORT

WELL LOCATION AND ACREAGE DEDICATION PLAT

1 API Number <b>30-015-45530</b>	2 Pool Code <b>57570</b>	3 Pool Name <b>Square Lake / Graysburg-S.A.</b>
4 Property Code	5 Property Name <b>WEST SQUARE LAKE 35 FEDERAL G</b>	6 Well Number <b>1</b>
7 GRID NO. <b>372001A</b>	8 Operator Name <b>SEGURO OIL &amp; GAS, LLC</b>	9 Elevation <b>3791'</b>

10 Surface Location

UL or lot no.	Section	Township	Range	Lot Idn	Feet from the	North/South line	Feet From the	East/West line	County
<b>G</b>	<b>35</b>	<b>16S</b>	<b>30E</b>		<b>2250</b>	<b>NORTH</b>	<b>1650</b>	<b>EAST</b>	<b>EDDY</b>

11 Bottom Hole Location If Different From Surface

UL or lot no.	Section	Township	Range	Lot Idn	Feet from the	North/South line	Feet from the	East/West line	County
12 Dedicated Acres	13 Joint or Infill	14 Consolidation Code	15 Order No.						

No allowable will be assigned to this completion until all interest have been consolidated or a non-standard unit has been approved by the division.

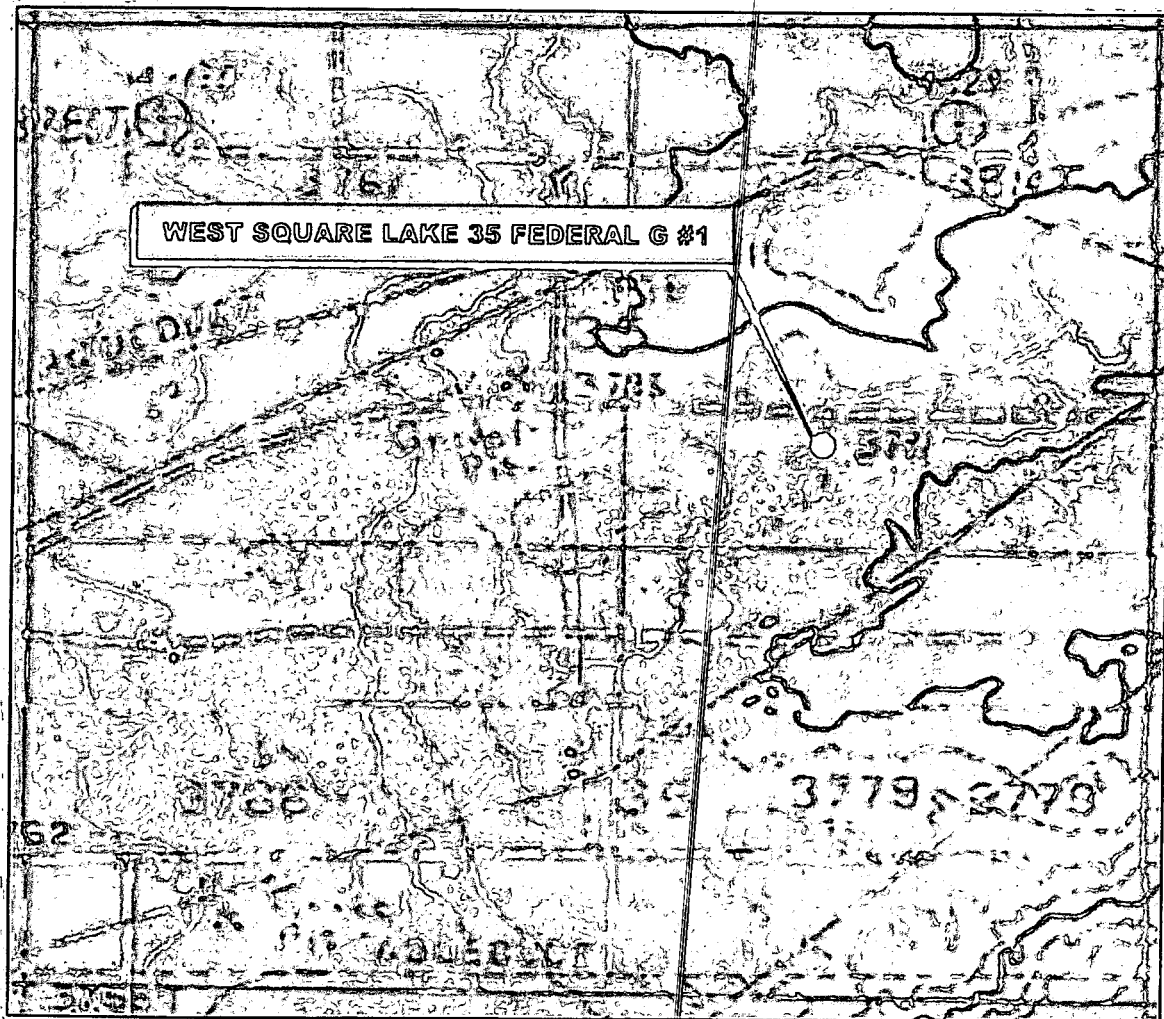
<p><b>GEODETIC DATA</b> NAD 83 GRID - NM EAST</p> <p><b>SURFACE LOCATION</b> N: 683775.0 - E: 662293.0</p> <p>LAT: 32.8790971° N LONG: 103.9393351° W</p> <p><b>CORNER DATA</b> NAD 83 GRID - NM EAST</p> <p>A: FOUND BRASS CAP "1916" N: 680729.8 - E: 658673.7</p> <p>B: FOUND BRASS CAP "1916" N: 683371.3 - E: 658663.2</p> <p>C: FOUND BRASS CAP "1916" N: 686012.3 - E: 658653.9</p> <p>D: FOUND BRASS CAP "1916" N: 686021.2 - E: 661294.5</p> <p>E: CALCULATED CORNER N: 686030.0 - E: 663935.3</p> <p>F: FOUND BRASS CAP "1916" N: 680747.5 - E: 663952.3</p> <p>G: FOUND BRASS CAP "1916" N: 680738.2 - E: 661314.5</p> <p>SEE DETAIL "A"</p> <p>DETAIL "A"</p> <p>3787.8' 600' 3791.8'</p> <p>3784.9' 600' 3791.9'</p> <p>2250'</p> <p>1650'</p> <p>35</p>	<p><b>17 OPERATOR CERTIFICATION</b> I hereby certify that the information contained herein is true and complete to the best of my knowledge and belief, and that this organization either owns a working interest or unleased mineral interest in the land including the proposed bottom hole location or has a right to drill this well at this location pursuant to a contract with an owner of such a mineral or working interest, or to a voluntary pooling agreement or a compulsory pooling order heretofore entered by the division.</p> <p><b>S. Paul Anderson</b> 7/13/2018 Signature Date <b>S. Paul Anderson</b> Printed Name <b>paule.seguero-llc.com</b> E-mail Address</p> <p><b>18 SURVEYOR CERTIFICATION</b> I hereby certify that the well location shown on this plat was plotted from field notes of actual surveys made by me or under my supervision, and that the same is true and correct to the best of my belief.</p> <p><b>5-31-2018</b> Date of Survey Signature and Seal of Professional Surveyor <b>19680</b> Certificate Number</p> <p><b>ROBERT M. HOWETT</b> NEW MEXICO 19680 PROFESSIONAL SURVEYOR</p>
---	---

RRC - Job No.:

LS1804426

# Chaves NM County State

# LOCATION VERIFICATION MAP



**SECTION 35, TWP. 16 SOUTH, RGE. 30 EAST,  
N. M. P. M., EDDY CO., NEW MEXICO**

OPERATOR: Seguro Oil & Gas, LLC  
LEASE: West Square Lake 35 Federal G  
WELL NO.: 1  
ELEVATION: 3791'

LOCATION: 2250' FNSL & 1650' FEL  
CONTOUR INTERVAL: 10'  
USGS TOPO. SOURCE MAP:  
Henshaw Hills, NM (P.E. 1985)

Copyright 2016 - All Rights Reserved

NO.	REVISION	DATE
JOB NO.: LS1804426		
DWG. NO.: 1804426LVM		

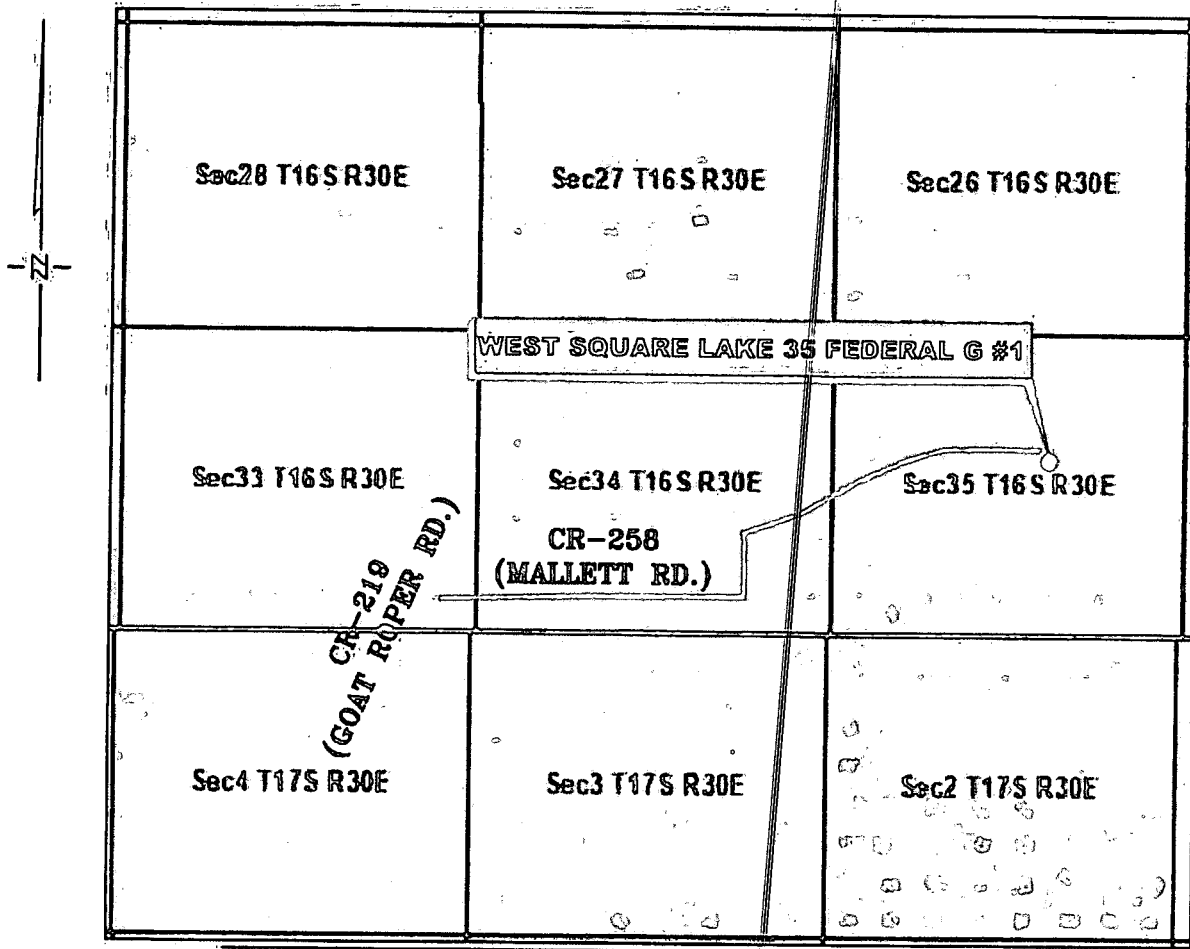
# RRC

308 W. BROADWAY ST., HOBBS, NM 88240 (575) 964-8200

SCALE: 1" = 1000'
DATE: 5-31-2018
SURVEYED BY: BC/AJ
DRAWN BY: LPS
APPROVED BY: RMH
SHEET: 1 OF 1

# VICINITY MAP

NOT TO SCALE



**SECTION 35, TWP. 16 SOUTH, RGE. 30 EAST,  
N. M. P. M., EDDY CO., NEW MEXICO**

OPERATOR: Sequero Oil & Gas, LLC  
LEASE: West Square Lake 35 Federal G  
WELL NO.: 1

LOCATION: 2250' FNL & 1650' FEL  
ELEVATION: 3791'

Copyright 2016 - All Rights Reserved

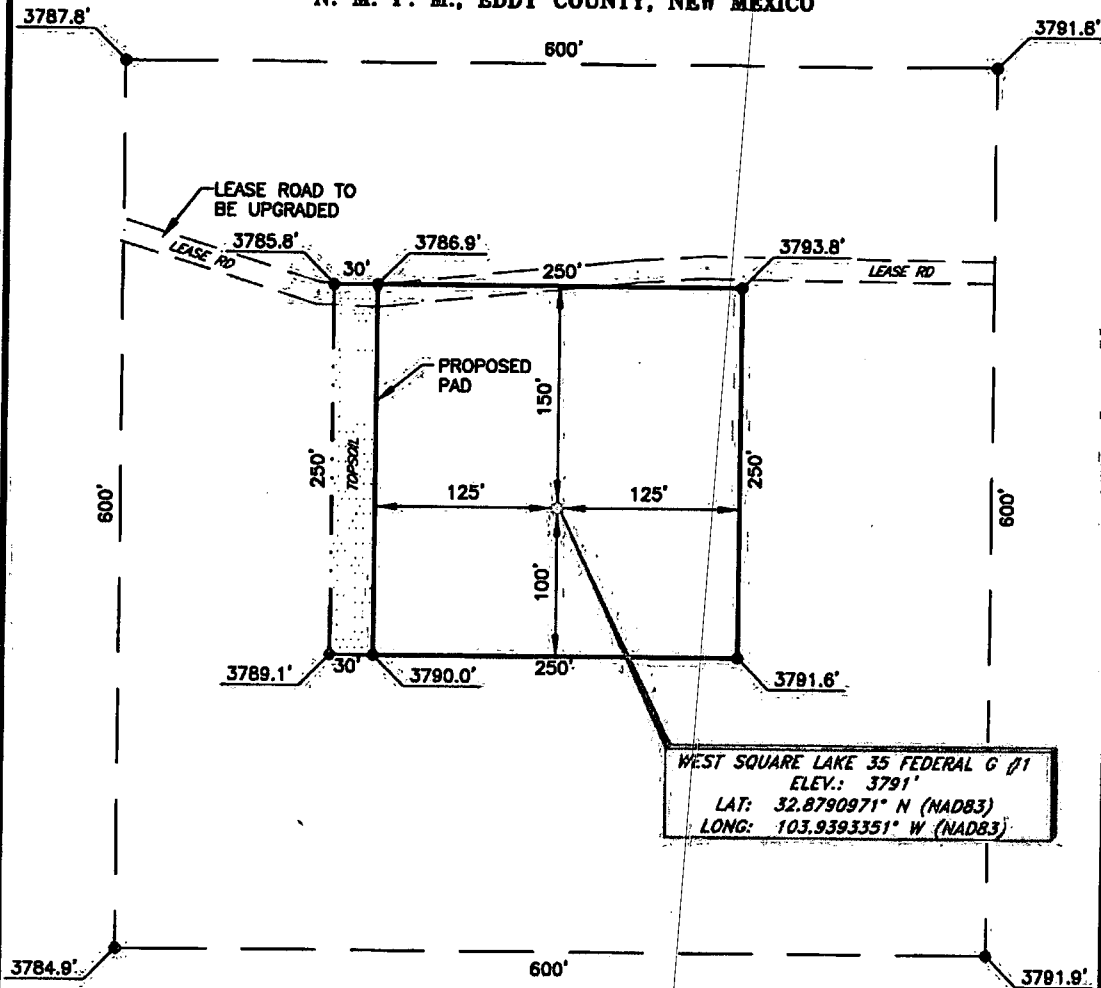
NO.	REVISION	DATE
JOB NO.:	LS1804426	
DWG. NO.:	1804426VM	

# RRC

308 W. BROADWAY ST., HOBBS, NM 88240 (575) 964-8200

SCALE:	N. T. S.
DATE:	5-31-2018
SURVEYED BY:	BC/AJ
DRAWN BY:	LPS
APPROVED BY:	RMH
SHEET:	1 OF 1

**SEGURO OIL & GAS, LLC**  
**WEST SQUARE LAKE 35 FEDERAL G #1**  
**(2250' FNL & 1650' FEL)**  
**SECTION 35, T16S, R30E**  
**N. M. P. M., EDDY COUNTY, NEW MEXICO**



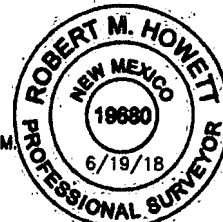
**DIRECTIONS TO LOCATION**

*From the intersection of CR- 219 (Goat Roper Rd.) and CR-258 (Mallett Rd);*  
*Go East on CR-258 approx. 0.9 miles to a lease road on the left;*  
*Turn left and go North approx. 0.2 miles to a lease road on the right;*  
*Turn right and go Northeast approx. 0.8 miles to a lease road on the right;*  
*Go East on lease road approx. 0.2 miles to location on the right.*

SCALE: 1" = 100'  
 0 50 100  
 BEARINGS ARE  
 NAD 83 GRID - NM EAST  
 DISTANCES ARE GROUND

I, R. M. Howett, a N. M. Professional Surveyor, hereby certify that I prepared this unclassified survey of a well location from an actual survey made on the ground under my direct supervision, said survey and plat meet the Min. Stds. for Land Surveying in the State of N. M. and are true and correct to the best of my knowledge and belief.

*Robert M. Howett*  
 Robert M. Howett NM PS 19680



Copyright 2016 - All Rights Reserved

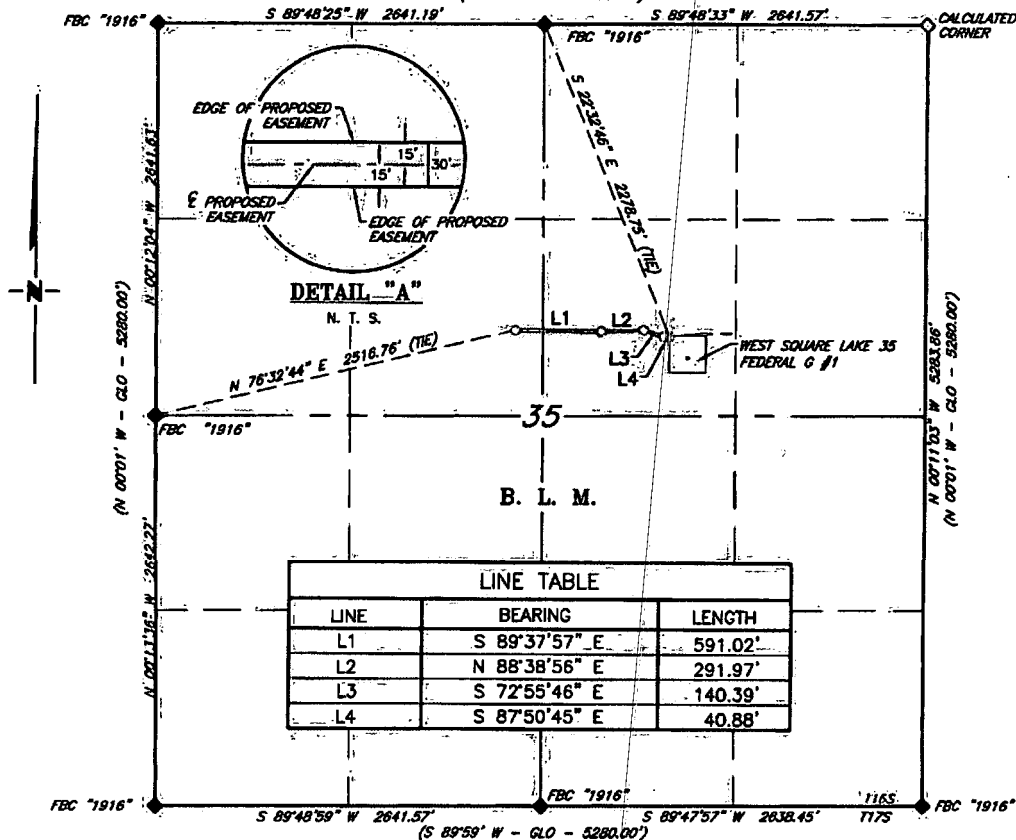
NO.	REVISION	DATE
JOB NO.:	LS1804426	
DWG. NO.:	1804426PAD	

**RRC**

308 W. BROADWAY ST., HOBBS, NM 88240 (575) 864-8200

SCALE: 1" = 100'  
 DATE: 5/31/18  
 SURVEYED BY: BC/AJ  
 DRAWN BY: LPS  
 APPROVED BY: RMH  
 SHEET: 1 OF 1

**SEGURO OIL & GAS, LLC**  
**PROPOSED UPGRADE OF AN EXISTING ROAD FOR THE**  
**WEST SQUARE LAKE 35 FEDERAL G #1**  
**SECTION 35, T16S, R30E,**  
**N. M. P. M., EDDY CO., NEW MEXICO**  
 (WEST - GLO - 5283.30')



**DESCRIPTION**

A strip of land 30 feet wide, being 1,064.26 feet or 64.501 rods in length, lying in Section 35, Township 16 South, Range 30 East, N. M. P. M., Eddy County, New Mexico, being 15 feet left and 15 feet right of the following described survey of a centerline across B. L. M. land:

**BEGINNING** at a point in the Northwest quarter of Section 35, which bears, N 76°32'44" E, 2,516.76 feet from a brass cap, stamped "1916", found for the West quarter corner of Section 35;

Thence S 89°37'57" E, 591.02 feet, to point;

Thence N 88°38'56" E, 291.97 feet, to point;

Thence S 72°55'46" E, 140.39 feet, to point;

Thence S 87°50'45" E, 40.88 feet to the End of Survey, a point in the Northeast quarter of Section 35, which bears, S 22°32'46" E, 2,278.75 feet from a brass cap, stamped "1916", found for the North quarter corner of Section 35.

Said strip of land contains 0.733 acres, more or less, and is allocated by forties as follows:

SCALE: 1" = 1000'	SE 1/4 NW 1/4	11.641 Rods	0.132 Acres
0 500' 1000'	SW 1/4 NE 1/4	52.860 Rods	0.601 Acres

BEARINGS ARE GRID AND 83 NM EAST  
 DISTANCES ARE HORIZ. GROUND.

**LEGEND**

- ( ) RECORD DATA - GLO
- ◆ FOUND MONUMENT AS NOTED
- EXISTING ROAD UPGRADE

I, R. M. Howett, a N. M. Professional Surveyor, hereby certify that I prepared this plat from an actual survey made on the ground under my direct supervision, said survey and plat meet the Min. Stds. for Land Surveying in the State of N. M. and are true and correct to the best of my knowledge and belief.

*Robert M. Howett*  
 Robert M. Howett NM PS 19880



Copyright 2016 - All Rights Reserved

NO.	REVISION	DATE
JOB NO.:	LS1804426	
DWG. NO.:	1804426RD	

**RRC**

308 W. BROADWAY ST., HOBBS, NM 88240 (575) 964-8200

SCALE: 1" = 1000'
DATE: 5-31-2018
SURVEYED BY: BC/AJ
DRAWN BY: LPS
APPROVED BY: RMH
SHEET: 1 OF 1